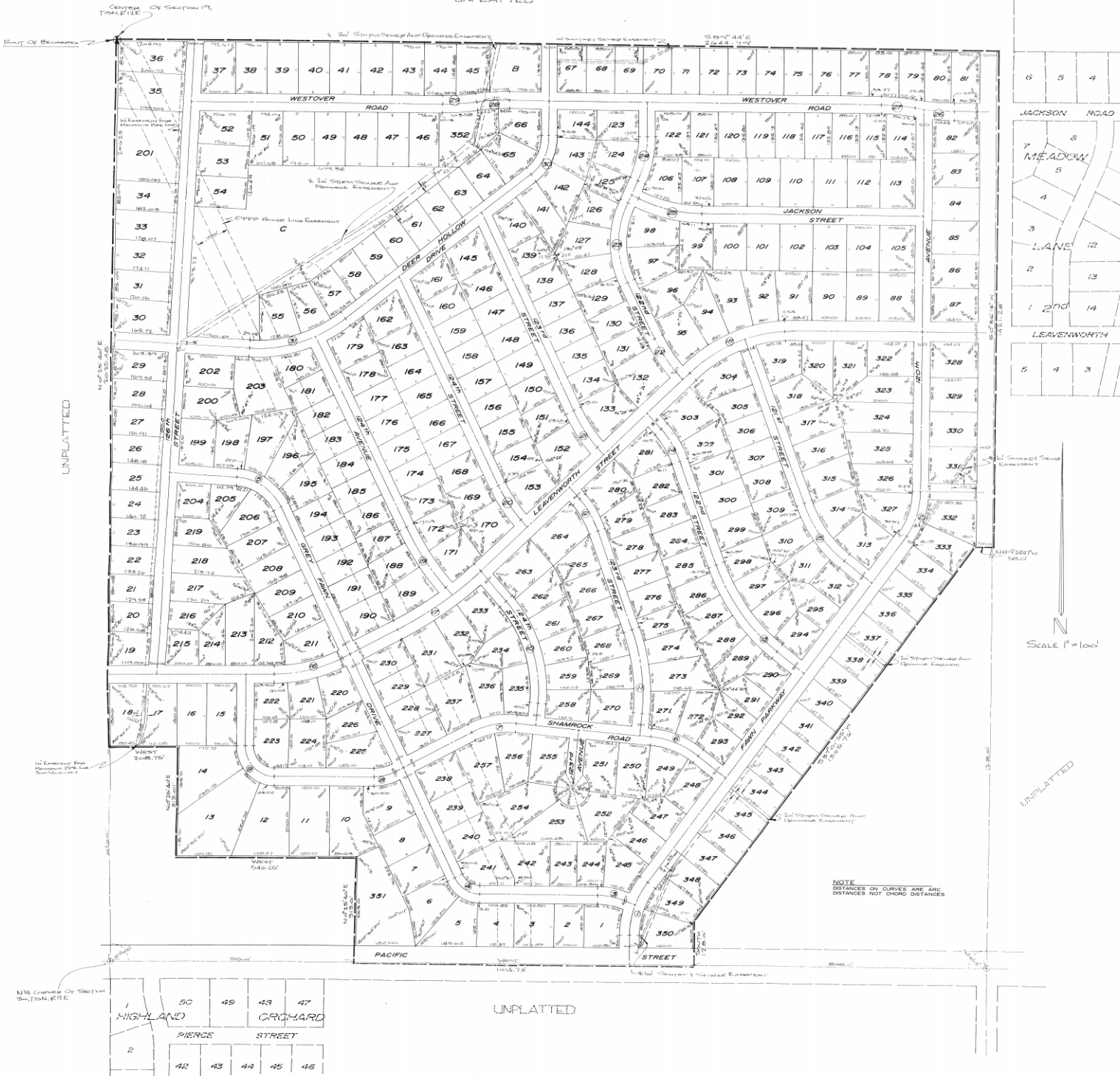


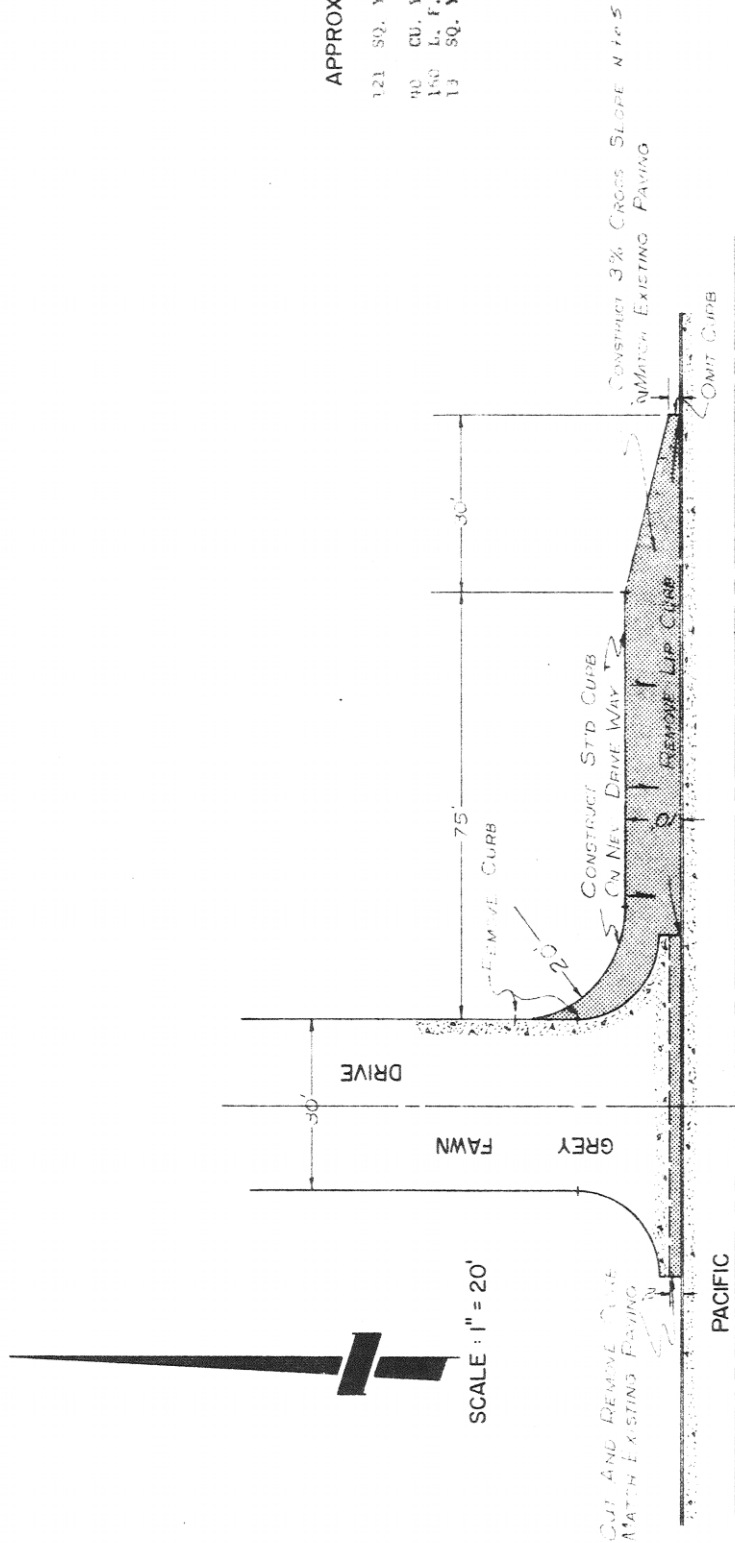
DEER RIDGE

LOTS 1 THRU 352, INCLUSIVE AND LOT B AND LOT C.
 A SUBDIVISION IN THE S.E. 1/4 OF SECTION 19, T15N, R12E OF 6th
 P.M., DOUGLAS COUNTY, NEBRASKA.

UNPLATTED



TURNING LANE for DEER RIDGE



APPROXIMATE QUANTITIES

- 121 SQ. YDS. 8" UNIFORM THICKNESS CONCRETE PAVING
- 94 CU. YDS. 8" TH INFRASTRUCTURE
- 150 L. F. REMOVE EXISTING CURB
- 13 SQ. YDS. REMOVE EXISTING PAVING

DATE: 11/15/11
DRAWN BY: [Signature]
CHECKED BY: [Signature]