

①

FILED
BOOK **ASB** PAGE **234**
97 NOV 19 AM 10:16

Plat # 472
FINAL PLAT

0324

Carol A. Hansen
REGISTERED LAND SURVEYOR
DODGE COUNTY, NEBRASKA

DAY ACRES 2ND ADD

COMPUTER
INDEX
PBB \$55.00

PART OF THE NW 1/4 OF THE NW 1/4,
SECTION 19, T 17 N, R 9 E, FREMONT,
DODGE COUNTY, NEBRASKA

PERIMETER DESCRIPTION:

Part of the NW 1/4 NW 1/4 of Section 19, Township 17 North, Range 9 East of the 6th Principal Meridian, Dodge County, Nebraska, and more particularly described as follows:

From the northwest corner of Section 19, Township 17 North, Range 9 East; thence N 89°53'48" E (assumed bearing) along the north line of NW 1/4 of said Section 19 a distance of 1375.22 feet to the northeast corner of the NW 1/4 NW 1/4 of said Section 19; thence S 00°03'10" E along the east line of said NW 1/4 NW 1/4 a distance of 385.00 feet to the Point of Beginning; thence continuing S 00°03'10" E along said east line a distance of 775.77 feet to a point on the northerly right-of-way line of Military Avenue; thence N 86°03'37" W along said northerly right-of-way line a distance of 361.55 feet to the southeast corner of Lot 1, Block 2 in Day Acres, a subdivision in the City of Fremont, Nebraska; thence northerly along the east line of said Block 2 as follows: N 05°23'06" W a distance of 232.41 feet; thence N 09°07'38" E a distance of 42.50 feet to the northeast corner of Lot 3 in said Block 2; thence N 36°34'30" W along the northerly line of said Block 3 and its westerly projection a distance of 229.23 feet to the northeast corner of Lot 9 in Block 3 in said Day Acres; thence N 33°23'10" E a distance of 159.67 feet to a point of curvature; thence along a 261.95 foot radius curve to the right an arc distance of 30.43 feet; thence N 40°04'19" E a distance of 33.96 feet; thence S 49°55'41" E a distance of 47.13 feet; thence N 18°04'01" E a distance of 103.20 feet; thence N 34°23'59" E a distance of 101.83 feet; thence N 89°53'40" E a distance of 299.85 feet to the Point of Beginning; and containing 7.28 Acres, more or less.

SURVEYOR'S CERTIFICATE:

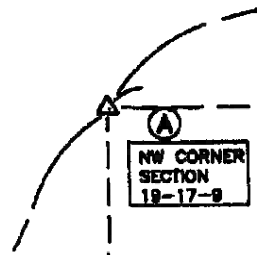
I do here certify that this plat of Day Acres 2nd Addition as shown and described on this instrument was prepared by me or under my direct supervision and that I am a duly registered land surveyor under the laws of the state of Nebraska and that all pins shown on this plat shall be set on or before December 1, 1997.



Richard L. Hansen
Richard L. Hansen
Registered Land Surveyor
Registration No.: LS-382
Dated: September 4, 1997
Client: Don Peterson & Assoc.
Job No. 97-106

0325

TION



CURVE DATA

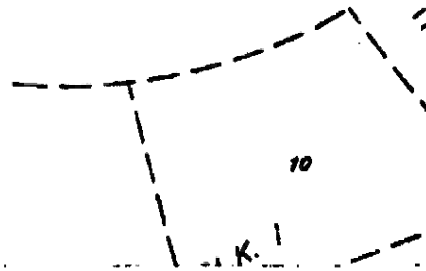
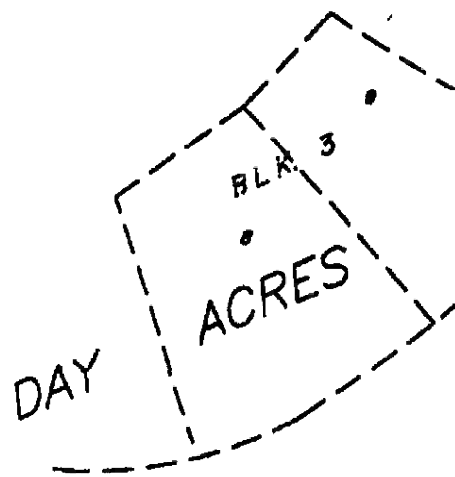
NUMBER	DELTA	RADIUS	CHORD	CHORD BEARING
C1	09°38'08"	281.88	13.22	S 34°44'
C2	09°38'48"	208.88	11.11	N 32°22'
C3	89°48'07"	20.00	13.37	N 77°42'
C4	38°13'41"	147.50	48.81	S 79°58'
C5	89°00'00"	20.00	20.00	S 48°03'
C6	89°43'13"	20.00	8.48	S 27°12'
C7	89°43'13"	20.00	8.48	N 28°22'
C8	89°43'13"	20.00	8.48	N 28°17'
C9	107°50'11"	20.00	26.37	S 38°11'
C10	40°08'44"	82.50	33.77	N 88°22'

ROAD

N 00°00'00" W
 2852.75'(M)
 2852.75'(R)

983.59'(R) 983.45'(C)

LUTHER

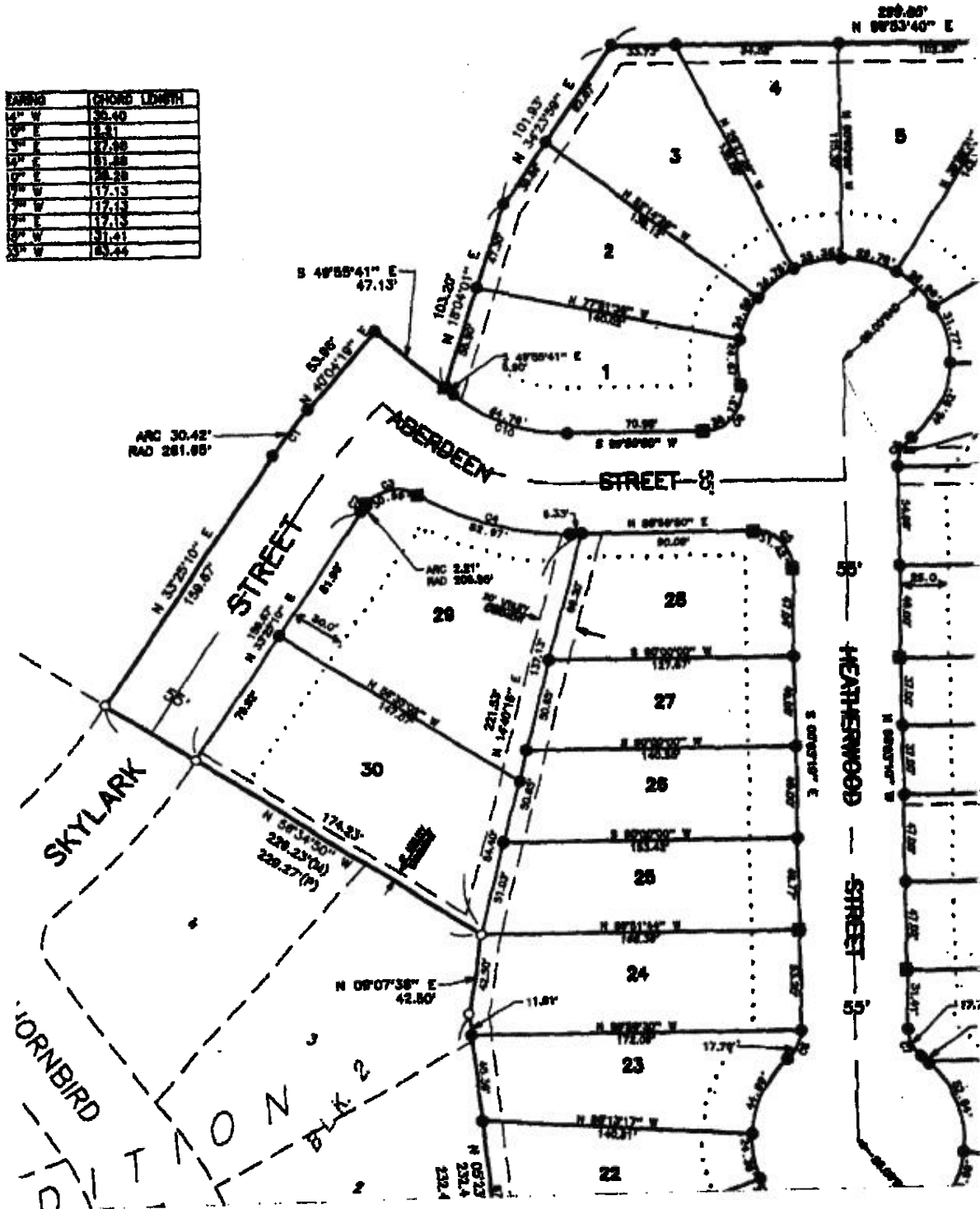


0326

N 89°53'40" E (Assumed Bearing)
2690.16'(GLO) 2700.10'(M)

1370.16'(GLO) 1375.22'(M)

PARCEL	CHORD LENGTH
1	35.40
2	47.13
3	47.13
4	47.13
5	47.13
6	47.13
7	47.13
8	47.13
9	47.13
10	47.13
11	47.13
12	47.13
13	47.13
14	47.13
15	47.13
16	47.13
17	47.13
18	47.13
19	47.13
20	47.13
21	47.13
22	47.13
23	47.13
24	47.13
25	47.13
26	47.13
27	47.13
28	47.13
29	47.13
30	47.13



0328

DEDICATION:

KNOW ALL MEN BY THESE PRESENTS:

That Don Peterson & Associates, a Nebraska Corporation, being the owner of the land contained within this plat and described in the particular description, have caused the same to be subdivided into lots, blocks and streets, said subdivision to be known as Day Avenue 2nd Addition, the lots to be numbered as shown, and I approve the disposition of the property as shown on this plat and I hereby dedicate to the public for perpetual public use those (2) streets to be known as Day Avenue Street, Aberdeen Street, and Featherwood Street at the locations and to the widths shown hereon, and I do also grant easements at the locations and to the widths shown on the plat to the City of Fremont and any public or private utility for roadwork use by electric property owners for the purpose of construction and maintenance of utility lines, pipes and drainage facilities. No permanent buildings or retaining walls shall be placed in the above described easement ways, but the same may be used for gardens, shrubs, landscaping and other purposes that do not then or later interfere with the intended use or rights herein granted.

WITNESS MY HAND THIS 22 DAY OF September 1997 A.D.

Steve Gordon
Steve Gordon
President
Don Peterson & Associates

ACKNOWLEDGEMENT:

STATE OF NEBRASKA)
COUNTY OF DODGE)

On this 22 day of September 1997, A.D., before me a notary public to and for said county personally came the above named Steve Gordon, President of Don Peterson and Associates, a Nebraska Corporation, who is personally known to me to be the identical person whose name is written in the above dedication and he acknowledges the execution thereof to be his voluntary act and deed as such officer and voluntary act of said corporation.

Cheryl Casper
Henry Public

My commission expires on the 8th day of March, 1998, A.D.



TIES TO SUBDIVISIONS:

- (A) NW corner Section 19-17-9
FOUND CONCRETE NAIL IN JOINT OF LUTHER ROAD
26.49' NE to nail in power
5.47' S to center of water
42.60' SW to nail in power
32.63' NW to nail in power
- (B) NE corner NW1/4 NW1/4 of Sec-88T 1/2 x 24" REBAR FLUSH SURFACE
1' E to projection of
16' N to projection of
19.90' NNE to northwest manhole structure
11.20' NE to northwest of manhole structure
8.71' ENE to southwest manhole structure
- (C) NW4 corner Section 19-17-9
FOUND ALUMINUM CAP B CENTERLINE CURVE OF C
3' W to projection of
100.1' N to 5/8" Open-T
31.43' E to Dodge Coun
93.97' W to Dodge Coun
- (D) Center of Section 19-17-9
FOUND 5/8" SMOOTH BAR
9' E to Centerline
19' S to projection
33.38' E to nail in cable
37.42' SW to "x" nail in
5.90' W to center of
- (E) W1/4 corner of Section 19-17-9
FOUND STAR DRILL HOLE
21.35' E to nail in power
95.11' SE to shiner in po
39.00' SW to Dodge Cou
48.01' NW to Dodge Cou

CORNERS:

INTERLINE

1 box
2
3

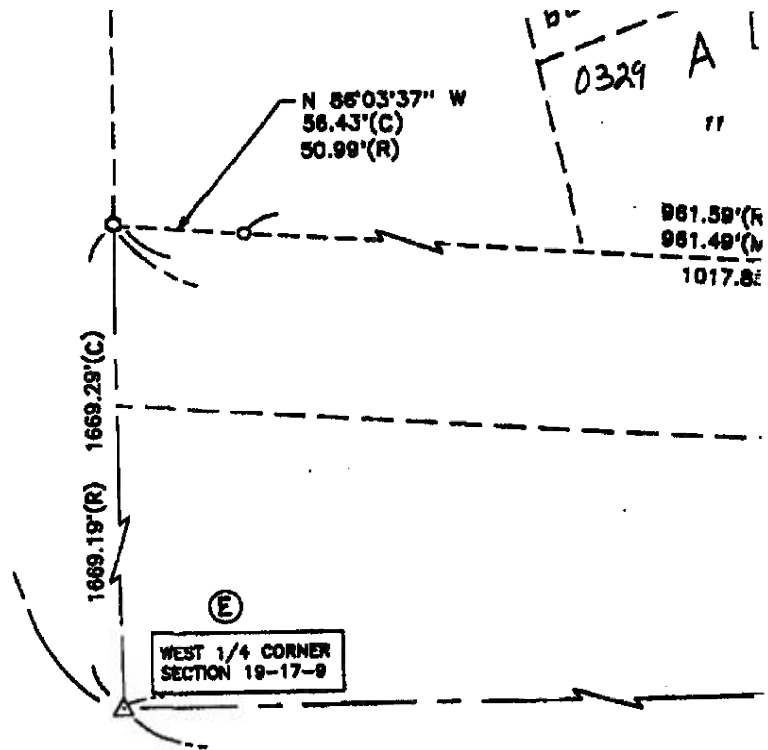
19-17-9
WITH GROUND

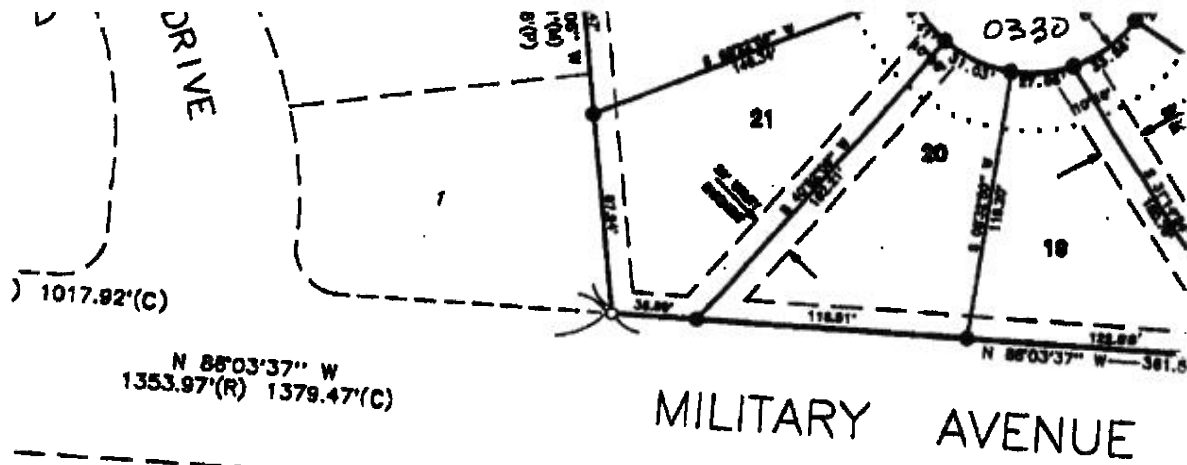
line from north
centerline of ditch from
center of north concrete
center of south concrete
center of south concrete

BURIED 0.5 FOOT DEEP IN
COUNTY ROAD
centerline County Road from north
Pipe buried 0.5 foot deep
shiner in power pole
shiner in power pole

BURIED 0.5 FOOT
North-South County Road
centerline from west
spring post
power pole
hole

CONCRETE
in
power pole
shiner in power pole
shiner in power pole





1017.92'(C)

N 88°03'37" W
1353.97'(R) 1379.47'(C)

MILITARY AVENUE

1377.66'(C)

S 89°49'48" W — 2703.61'(M) 2691.48'(GLO)

APPROVAL OF CITY PLANNING COMMISSION:

This plot of Day Avenue 2nd Addition was approved by the City Planning Commission of the City of Fremont, Nebraska this 12th day of SEPTEMBER, 1997, A.D.

Paul Giff
Chairperson

FREMONT CITY, NE

This plot of Day Avenue 2nd A.C. of the City of Fremont, Nebraska



