

21

COMPARED

NE 1/4 NE 1/4 SEC. 3-74-43 (FOUND CONC. MON.)
 NW 1/4 SEC. 3-74-43
 NE 1/4 NE 1/4 SEC. 3-74-43
 SW 1/4 SEC. 3-74-43
 SE 1/4 SEC. 3-74-43

LEGAL DESCRIPTION:
 A tract of land located in part of the SE 1/4 NE 1/4 and part of the NE 1/4 NE 1/4 all in Section 3, Township 74 North, Range 43 West of the 5th Principal Meridian, Pottawattamie County, Iowa, more fully described as follows:
 Commencing at the Southwest corner of said SE 1/4 NE 1/4 and point of beginning; thence N0°20'51"E along the West line of said SE 1/4 NE 1/4 a distance of 1191.67 feet; thence N47°43'13"E a distance of 415.00 feet; thence S42°16'47"E a distance of 150.00 feet; thence S29°31'22"E a distance of 67.67 feet; thence S42°16'47"E a distance of 102.56 feet to the beginning of a curve concave Southwesterly and having a radius of 117.00 feet and a central angle of 42°37'38"; thence Southeasterly along said curve an arc length of 87.05 feet and having a chord bearing and distance of S20°57'58"E, 85.05 feet to the end of said curve; thence S0°20'51"W and parallel to the West line of said SE 1/4 NE 1/4 a distance of 12.88 feet; thence N89°39'09"W a distance of 150.00 feet; thence S0°20'51"W and parallel to the West line of said SE 1/4 NE 1/4 a distance of 532.83 feet; thence S18°39'09"E a distance of 142.78 feet; thence S89°39'09"E a distance of 18.52 feet; thence S18°39'09"E a distance of 449.83 feet to a point on the centerline of a county road formerly known as Highway 100; thence S83°30'41"W along said centerline a distance of 339.74 feet to a point on the South line of said SE 1/4 NE 1/4; thence S89°48'28"W along the South line of said SE 1/4 NE 1/4 a distance of 265.14 feet to the point of beginning. Said tract contains 14.072 acres, more or less, including presently established county road right of way.

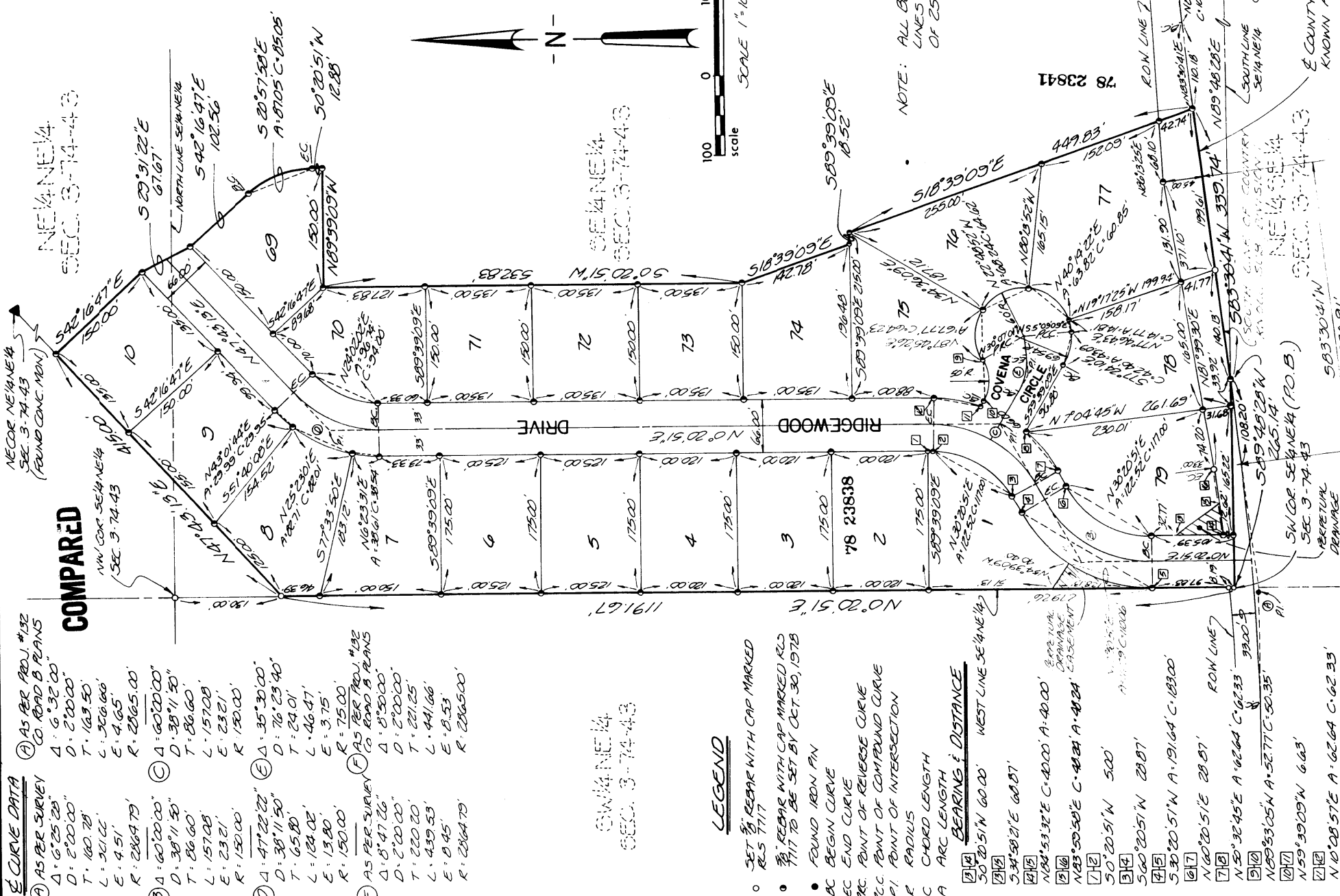
NOTE: The West line of said SE 1/4 NE 1/4 is assumed to bear N0°20'51"E for this description.

I hereby certify that this plat, map, survey or report was made by me or under my direct personal supervision and that I am a duly Registered Land Surveyor under the laws of the State of Iowa.

Signed: *J. F. Duggan* Date: 6/1/78
 J. F. DUGGAN, P.E., I.L.S. Iowa Reg. No. 3684

POTTAWATTAMIE COUNTY BOARD OF SUPERVISORS 78 23840
 Approved by Chairman *Edward L. Smith* Date 6/1/78
 POTTAWATTAMIE COUNTY ENGINEER
 Approved by C. E. Hayes *Charles E. Hayes* Date 6-1-78
 POTTAWATTAMIE COUNTY ZONING COMMISSION
 Approved by Chairman *James L. Broude* Date 5-31-78
 POTTAWATTAMIE COUNTY AUDITOR
 Approved by Douglas U. Primmer *Douglas U. Primmer* Date 6-1-78
 Entered for taxation JUN 2 1978
 County Auditor *Douglas U. Primmer*

NOTE: A PERPETUAL EASEMENT OF 5 FEET ON FRONT & SIDE LOT LINES, & 10 FEET ON REAR LOT LINES SHALL BE RESERVED FOR THE INSTALLATION AND MAINTENANCE OF UTILITIES.



CURVE DATA

(A) AS PER PROJ. #132
 CO. ROAD B PLANS
 Δ: 6°25'20"
 D: 2'00.00'
 T: 1.63.50'
 L: 306.146'
 E: 4.65'
 R: 2864.79'

(B) Δ: 60°20'00"
 D: 38'11.50"
 T: 86.60'
 L: 157.08'
 E: 23.21'
 R: 180.00'

(C) Δ: 47°22'22"
 D: 76'23.40"
 T: 24.01'
 L: 124.02'
 E: 3.75'
 R: 150.00'

(D) Δ: 35°30'00"
 D: 76'23.40"
 T: 24.01'
 L: 124.02'
 E: 3.75'
 R: 150.00'

(E) AS PER PROJ. #132
 CO. ROAD A PLANS
 Δ: 8°50'00"
 D: 2'00.00'
 T: 221.25'
 L: 439.53'
 E: 8.45'
 R: 2864.79'

LEGEND

- SET BY REBAR WITH CAP MARKED RLS 7117
- REBAR WITH CAP MARKED RLS 7117 TO BE SET BY OCT. 30, 1978
- FOUND IRON PIN
- AC BEGIN CURVE
- EC END CURVE
- PC POINT OF COMPOUND CURVE
- PI POINT OF INTERSECTION
- R RADIUS
- C CHORD LENGTH
- A ARC LENGTH

BEARINGS & DISTANCE

- 50°20'51"N 60.00' WEST LINE SE 1/4 NE 1/4
- 53°45'21"E 60.87'
- N84°53'32"E C-40.00' A-40.00'
- N83°50'50"E C-44.21' A-44.21'
- 50°20'51"N 50.00'
- 50°20'51"N 28.87'
- 53°20'51"N A-191.64' C-183.00'
- N 60°20'51"E 28.87' ROW LINE 7
- N 50°32'45"E A-62.64' C-62.33' 3920.9
- N89°53'05"N A-52.77' C-50.35'
- N59°39'09"N 6.63'
- N 10°20'51"E A-62.64' C-62.33'

NOTE: ALL BUILDING SETBACK LINES ARE A MINIMUM OF 25 FEET.

78 23841
 78 23839
 78 23840

NE 1/4 NE 1/4 SEC. 3-74-43
 NW 1/4 SEC. 3-74-43
 SE 1/4 SEC. 3-74-43
 SW 1/4 SEC. 3-74-43
 ROW LINE 7
 COUNTY ROAD FORMERLY KNOWN AS HIGHWAY 100

NE 1/4 NE 1/4 SEC. 3-74-43
 NW 1/4 SEC. 3-74-43
 SE 1/4 SEC. 3-74-43
 SW 1/4 SEC. 3-74-43

NE 1/4 NE 1/4 SEC. 3-74-43
 NW 1/4 SEC. 3-74-43
 SE 1/4 SEC. 3-74-43
 SW 1/4 SEC. 3-74-43

NE 1/4 NE 1/4 SEC. 3-74-43
 NW 1/4 SEC. 3-74-43
 SE 1/4 SEC. 3-74-43
 SW 1/4 SEC. 3-74-43

NE 1/4 NE 1/4 SEC. 3-74-43
 NW 1/4 SEC. 3-74-43
 SE 1/4 SEC. 3-74-43
 SW 1/4 SEC. 3-74-43

NE 1/4 NE 1/4 SEC. 3-74-43
 NW 1/4 SEC. 3-74-43
 SE 1/4 SEC. 3-74-43
 SW 1/4 SEC. 3-74-43