

Lots
1-76

- Plat and Dedication recorded September 13, 1985 in Book 8 at Page 84 of the Records of Sarpy County, Nebraska, which grants easement(s) to Omaha Public Power District and Northwestern Bell Telephone Company for installation and maintenance of utility facilities on, over, through, under and across a 5 foot strip of land adjoining all front and side boundary lines; an 8 foot strip of land adjoining all rear boundary lines of interior lots; and a 16 foot strip of land adjoining the rear boundary lines of all exterior lots.

Lots 1-53,
65-70, and
85-130

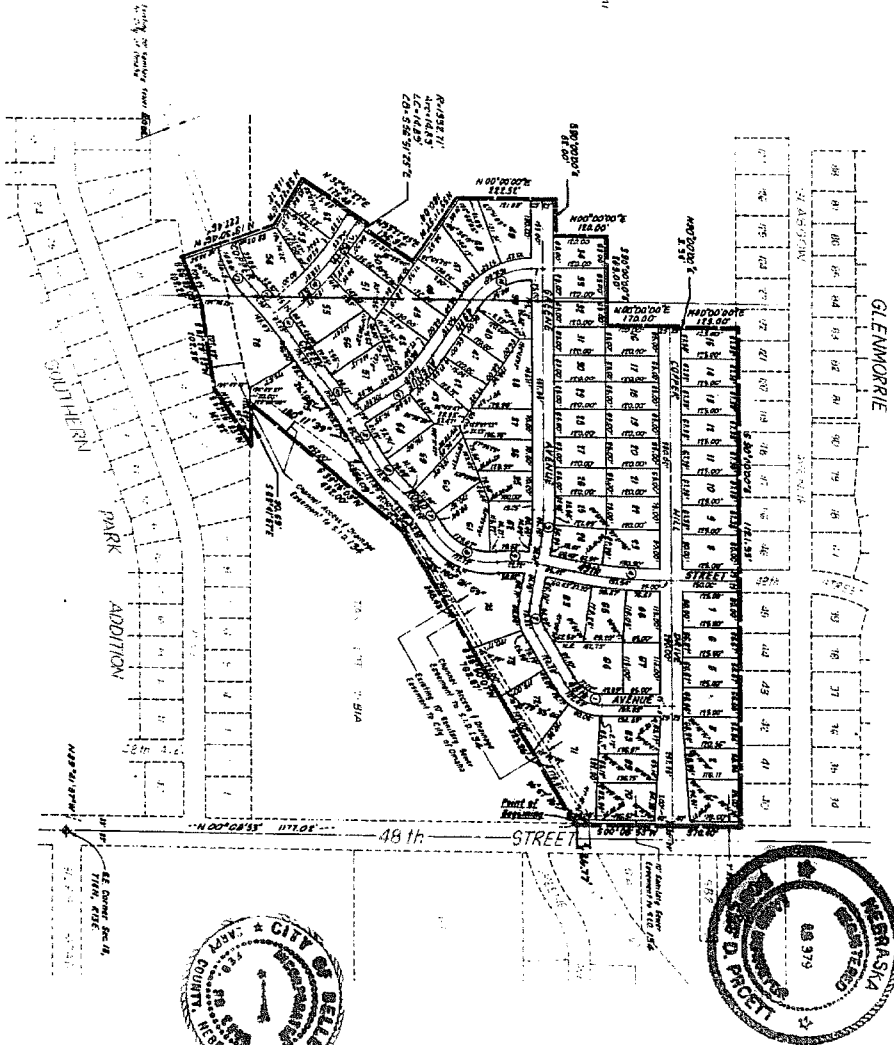
- Covenants recorded April 4, 1986, in Book 59 at Page 684 of the Records of Sarpy County, Nebraska, which grants easement to utility companies for installation and maintenance of utility facilities on, over, through, under and across a 5 foot wide strip of land adjoining all front and side boundary lines; an 8 foot wide strip of land adjoining all rear boundary lines of interior lots; and a 16 foot wide strip of land adjoining all rear boundary lines of exterior lots. Covenants grant an additional easement to Metropolitan Utilities District for installation and maintenance of utility facility on, under, through, and across a 5 foot strip of land abutting all Streets.

Lots
77-137

- Plat and Dedication Recorded February 20, 1986, in Book 8 at Page 96 of the Records of Sarpy County, Nebraska, which grants easement(s) to Omaha Public Power District and Northwestern Bell Telephone Company for installation and maintenance of utility facilities on, over, through, under and across a 5 foot strip of land adjoining all front and side boundary lines; an 8 foot strip of land adjoining all rear boundary lines of interior lots; and a 16 foot strip of land adjoining the rear boundary lines of all exterior lots.

COPPER CREEK

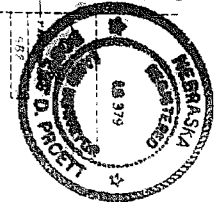
LOTS 1-79 INCLUSIVE BEING A PLATTING OF PART OF
TAX LOT 2A1, TAX LOT 3C, AND TAX LOT 3B1A LYING
IN THE SOUTH 1/2 OF SECTION 19, TOWNSHIP 19 NORTH,
RANGE 15 EAST OF THE 6TH P.M., SARREY COUNTY NEBR.



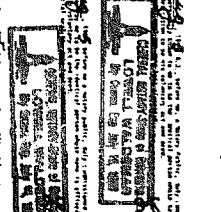
- NOTES:
1. THE LOT LINES SHOWN ON THIS PLAN ARE BASED ON THE RECORD STATEMENTS.
 2. ALL LOTS ARE TO BE PLATTED ACCORDING TO THIS PLAN.
 3. THE LOTS ARE TO BE PLATTED ACCORDING TO THE RECORD STATEMENTS.
 4. ALL LOTS ARE TO BE PLATTED ACCORDING TO THE RECORD STATEMENTS.

LOT NO.	ACRES	TAXES	REMARKS
1	0.00	0.00	
2	0.00	0.00	
3	0.00	0.00	
4	0.00	0.00	
5	0.00	0.00	
6	0.00	0.00	
7	0.00	0.00	
8	0.00	0.00	
9	0.00	0.00	
10	0.00	0.00	
11	0.00	0.00	
12	0.00	0.00	
13	0.00	0.00	
14	0.00	0.00	
15	0.00	0.00	
16	0.00	0.00	
17	0.00	0.00	
18	0.00	0.00	
19	0.00	0.00	
20	0.00	0.00	
21	0.00	0.00	
22	0.00	0.00	
23	0.00	0.00	
24	0.00	0.00	
25	0.00	0.00	
26	0.00	0.00	
27	0.00	0.00	
28	0.00	0.00	
29	0.00	0.00	
30	0.00	0.00	
31	0.00	0.00	
32	0.00	0.00	
33	0.00	0.00	
34	0.00	0.00	
35	0.00	0.00	
36	0.00	0.00	
37	0.00	0.00	
38	0.00	0.00	
39	0.00	0.00	
40	0.00	0.00	
41	0.00	0.00	
42	0.00	0.00	
43	0.00	0.00	
44	0.00	0.00	
45	0.00	0.00	
46	0.00	0.00	
47	0.00	0.00	
48	0.00	0.00	
49	0.00	0.00	
50	0.00	0.00	
51	0.00	0.00	
52	0.00	0.00	
53	0.00	0.00	
54	0.00	0.00	
55	0.00	0.00	
56	0.00	0.00	
57	0.00	0.00	
58	0.00	0.00	
59	0.00	0.00	
60	0.00	0.00	
61	0.00	0.00	
62	0.00	0.00	
63	0.00	0.00	
64	0.00	0.00	
65	0.00	0.00	
66	0.00	0.00	
67	0.00	0.00	
68	0.00	0.00	
69	0.00	0.00	
70	0.00	0.00	
71	0.00	0.00	
72	0.00	0.00	
73	0.00	0.00	
74	0.00	0.00	
75	0.00	0.00	
76	0.00	0.00	
77	0.00	0.00	
78	0.00	0.00	
79	0.00	0.00	

11273

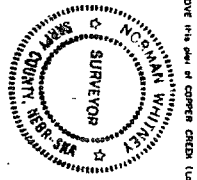


ASSISTANT
[Signature]
 1925 SEP 13 PM 3:58
 REC'D BY CLERK



RECORDED
 1925 SEP 13 PM 3:58

NOTARY PUBLIC
[Signature]
 1925 SEP 13 PM 3:58



SPECIAL OF PLANNING COMMISSION
 1925 SEP 13 PM 3:58