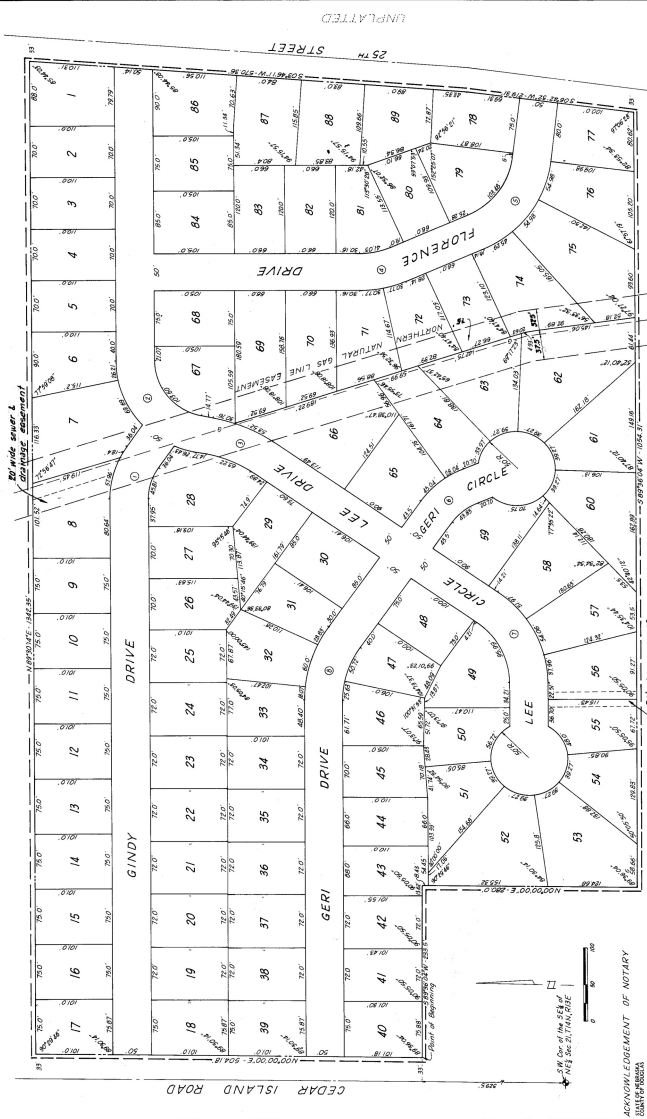


# CITTA'S 1ST ADDITION

A SUBDIVISION OF TAX LOT 441, IN SEC. 22, T14N, R18E, AND PART OF TAX LOT 193A3A IN SEC. 21, T14N, R18E OF THE 6TH P.M., SAPPY COUNTY, NEBRASKA.



ACKNOWLEDGEMENT OF NOTARY  
 JUAN PARRERA

ACKNOWLEDGEMENT OF NOTARY  
 COURTNEY

ACKNOWLEDGEMENT OF NOTARY  
 COURTNEY

ACKNOWLEDGEMENT OF NOTARY  
 COURTNEY

ACKNOWLEDGEMENT OF NOTARY  
 COURTNEY

ACKNOWLEDGEMENT OF NOTARY  
 COURTNEY

ACKNOWLEDGEMENT OF NOTARY  
 COURTNEY

ACKNOWLEDGEMENT OF NOTARY  
 COURTNEY

ACKNOWLEDGEMENT OF NOTARY  
 COURTNEY

COUNTY TREASURER'S CERTIFICATE  
 APPROVED AND PAID FOR THE CITY OF BELLEVUE CITY ENGINEER  
 DATE: 4-6-72

APPROVAL OF BELLEVUE CITY ENGINEER  
 APPROVED BY: [Signature]

APPROVAL OF BELLEVUE CITY ENGINEER  
 APPROVED BY: [Signature]

APPROVAL OF BELLEVUE CITY ENGINEER  
 APPROVED BY: [Signature]

APPROVAL OF BELLEVUE CITY ENGINEER  
 APPROVED BY: [Signature]

APPROVAL OF BELLEVUE CITY ENGINEER  
 APPROVED BY: [Signature]

APPROVAL OF BELLEVUE CITY ENGINEER  
 APPROVED BY: [Signature]

APPROVAL OF BELLEVUE CITY ENGINEER  
 APPROVED BY: [Signature]

DEDICATION  
 APPROVED BY: [Signature]

APPROVAL OF BELLEVUE CITY ENGINEER  
 APPROVED BY: [Signature]

APPROVAL OF BELLEVUE CITY ENGINEER  
 APPROVED BY: [Signature]

APPROVAL OF BELLEVUE CITY ENGINEER  
 APPROVED BY: [Signature]

APPROVAL OF BELLEVUE CITY ENGINEER  
 APPROVED BY: [Signature]

APPROVAL OF BELLEVUE CITY ENGINEER  
 APPROVED BY: [Signature]

APPROVAL OF BELLEVUE CITY ENGINEER  
 APPROVED BY: [Signature]

APPROVAL OF BELLEVUE CITY ENGINEER  
 APPROVED BY: [Signature]

APPROVAL OF BELLEVUE CITY ENGINEER  
 APPROVED BY: [Signature]

APPROVAL OF BELLEVUE CITY ENGINEER  
 APPROVED BY: [Signature]

APPROVAL OF BELLEVUE CITY ENGINEER  
 APPROVED BY: [Signature]

APPROVAL OF BELLEVUE CITY ENGINEER  
 APPROVED BY: [Signature]

APPROVAL OF BELLEVUE CITY ENGINEER  
 APPROVED BY: [Signature]

APPROVAL OF BELLEVUE CITY ENGINEER  
 APPROVED BY: [Signature]

APPROVAL OF BELLEVUE CITY ENGINEER  
 APPROVED BY: [Signature]

APPROVAL OF BELLEVUE CITY ENGINEER  
 APPROVED BY: [Signature]

APPROVAL OF BELLEVUE CITY ENGINEER  
 APPROVED BY: [Signature]

APPROVAL OF BELLEVUE CITY ENGINEER  
 APPROVED BY: [Signature]

APPROVAL OF BELLEVUE CITY ENGINEER  
 APPROVED BY: [Signature]

APPROVAL OF BELLEVUE CITY ENGINEER  
 APPROVED BY: [Signature]

APPROVAL OF BELLEVUE CITY ENGINEER  
 APPROVED BY: [Signature]

APPROVAL OF BELLEVUE CITY ENGINEER  
 APPROVED BY: [Signature]

APPROVAL OF BELLEVUE CITY ENGINEER  
 APPROVED BY: [Signature]

APPROVAL OF BELLEVUE CITY ENGINEER  
 APPROVED BY: [Signature]

APPROVAL OF BELLEVUE CITY ENGINEER  
 APPROVED BY: [Signature]

APPROVAL OF BELLEVUE CITY ENGINEER  
 APPROVED BY: [Signature]

APPROVAL OF BELLEVUE CITY ENGINEER  
 APPROVED BY: [Signature]

APPROVAL OF BELLEVUE CITY ENGINEER  
 APPROVED BY: [Signature]

APPROVAL OF BELLEVUE CITY ENGINEER  
 APPROVED BY: [Signature]

APPROVAL OF BELLEVUE CITY ENGINEER  
 APPROVED BY: [Signature]

FILED FOR RECORD: 4-22-72, AT 10:30 A.M. IN BOOK 5 OF PLATS REGISTERED IN SAPPY COUNTY NEB.  
 FILE: 62-Carl & Helene  
 Approved by: [Signature]  
 CIVIL ENGINEER  
 27-11-72

FILED FOR RECORD: 4-22-72, AT 10:30 A.M. IN BOOK 5 OF PLATS REGISTERED IN SAPPY COUNTY NEB.  
 FILE: 62-Carl & Helene  
 Approved by: [Signature]  
 CIVIL ENGINEER  
 27-11-72

FILED FOR RECORD: 4-22-72, AT 10:30 A.M. IN BOOK 5 OF PLATS REGISTERED IN SAPPY COUNTY NEB.  
 FILE: 62-Carl & Helene  
 Approved by: [Signature]  
 CIVIL ENGINEER  
 27-11-72

FILED FOR RECORD: 4-22-72, AT 10:30 A.M. IN BOOK 5 OF PLATS REGISTERED IN SAPPY COUNTY NEB.  
 FILE: 62-Carl & Helene  
 Approved by: [Signature]  
 CIVIL ENGINEER  
 27-11-72

FILED FOR RECORD: 4-22-72, AT 10:30 A.M. IN BOOK 5 OF PLATS REGISTERED IN SAPPY COUNTY NEB.  
 FILE: 62-Carl & Helene  
 Approved by: [Signature]  
 CIVIL ENGINEER  
 27-11-72

62

June 21, 1973, Page 653

File # 0162269