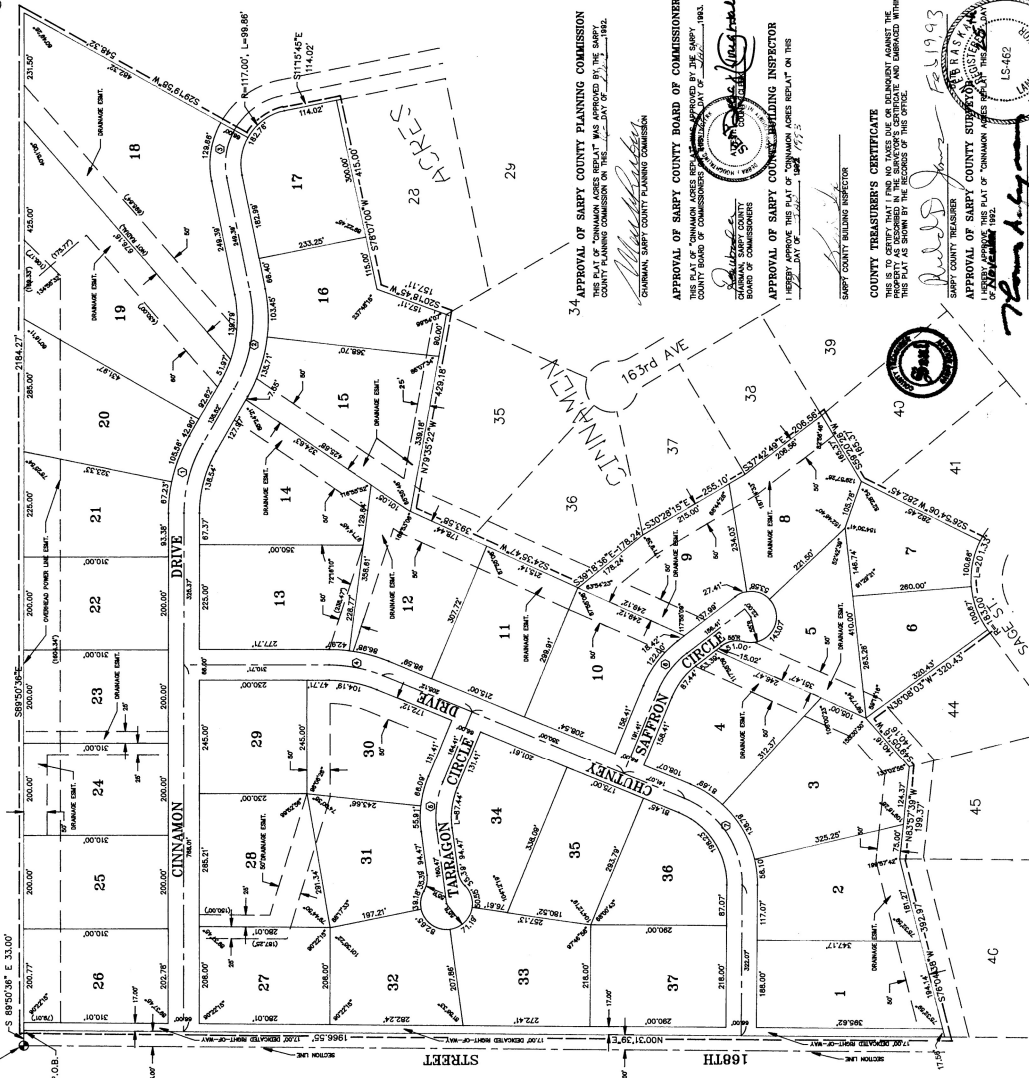


93-08283

# CINNAMON ACRES REPLAT

THE EAST PART OF T14N AND R11E AND ALL OF LOTS 22, 27, 28, 29, 30, 31, 32, 33, 34, 35, 36, 37, 38, 39, 40, 41, 42, 43 AND 47 THRU 61, CINNAMON ACRES, LOCATED IN THE SOUTHWEST QUARTER OF SECTION 22, T14N, R11E, S47E, SARPY COUNTY, NEBRASKA, LOTS 1 THRU 37.



Proof	_____
D.E.	_____
Verify	_____
Filed	_____
Checked	_____
Fees	45.00

93-003283

66 FEB 19 11 43 AM

RECORDED

FINAL PLAT OF CINNAMON ACRES REPLAT  
 LOCATED IN THE SOUTHWEST 1/4 OF SECTION  
 22, T 14 N, R 11 E, SARPY COUNTY, NEBRASKA.

Hill-Parrell Associates, Inc.  
 Land Surveyors, Construction Surveyors  
 1104 S. 25th St., Bellevue, NE 68123 402-291-6100



NOV. 23. 1992  
 SHEET 1  
 OF 1



CHORD	BEARING	CHORD	BEARING
1	117.00°	117.00°	117.00°
2	117.00°	117.00°	117.00°
3	117.00°	117.00°	117.00°
4	117.00°	117.00°	117.00°
5	117.00°	117.00°	117.00°
6	117.00°	117.00°	117.00°
7	117.00°	117.00°	117.00°
8	117.00°	117.00°	117.00°
9	117.00°	117.00°	117.00°
10	117.00°	117.00°	117.00°
11	117.00°	117.00°	117.00°
12	117.00°	117.00°	117.00°
13	117.00°	117.00°	117.00°
14	117.00°	117.00°	117.00°
15	117.00°	117.00°	117.00°
16	117.00°	117.00°	117.00°
17	117.00°	117.00°	117.00°
18	117.00°	117.00°	117.00°
19	117.00°	117.00°	117.00°
20	117.00°	117.00°	117.00°
21	117.00°	117.00°	117.00°
22	117.00°	117.00°	117.00°
23	117.00°	117.00°	117.00°
24	117.00°	117.00°	117.00°
25	117.00°	117.00°	117.00°
26	117.00°	117.00°	117.00°
27	117.00°	117.00°	117.00°
28	117.00°	117.00°	117.00°
29	117.00°	117.00°	117.00°
30	117.00°	117.00°	117.00°
31	117.00°	117.00°	117.00°
32	117.00°	117.00°	117.00°
33	117.00°	117.00°	117.00°
34	117.00°	117.00°	117.00°
35	117.00°	117.00°	117.00°
36	117.00°	117.00°	117.00°
37	117.00°	117.00°	117.00°
38	117.00°	117.00°	117.00°
39	117.00°	117.00°	117.00°
40	117.00°	117.00°	117.00°
41	117.00°	117.00°	117.00°
42	117.00°	117.00°	117.00°
43	117.00°	117.00°	117.00°
44	117.00°	117.00°	117.00°
45	117.00°	117.00°	117.00°

NOTES:  
 1. ALL LOT LINES ARE 50' UNLESS OTHERWISE SHOWN.  
 2. ALL DIMENSIONS SHOWN IN PARAGRAPHS REFER TO EASEMENTS.

### SURVEYOR'S CERTIFICATE

I, WILLIAM A. FRANKLIN, THE UNDERSIGNED REGISTERED LAND SURVEYOR, DO HEREBY CERTIFY THAT THE FOREGOING IS A TRUE AND CORRECT COPY OF THE ORIGINAL PLAT AS FILED IN THE OFFICE OF THE STATE SURVEYOR, NEBRASKA, AND THAT THE SAME IS A TRUE AND CORRECT COPY OF THE ORIGINAL PLAT AS FILED IN THE OFFICE OF THE COUNTY SURVEYOR, SARPY COUNTY, NEBRASKA. I, WILLIAM A. FRANKLIN, THE UNDERSIGNED REGISTERED LAND SURVEYOR, DO HEREBY CERTIFY THAT THE FOREGOING IS A TRUE AND CORRECT COPY OF THE ORIGINAL PLAT AS FILED IN THE OFFICE OF THE STATE SURVEYOR, NEBRASKA, AND THAT THE SAME IS A TRUE AND CORRECT COPY OF THE ORIGINAL PLAT AS FILED IN THE OFFICE OF THE COUNTY SURVEYOR, SARPY COUNTY, NEBRASKA.

DATE: 11-22-92  
 WILLIAM A. FRANKLIN, No. 330  
 STATE SURVEYOR

### DEDICATION

THE SURVEYOR HEREBY DEDICATES TO THE PUBLIC THE STREETS AND EASEMENTS SHOWN ON THIS PLAT, AND THE SAME SHALL BE OPEN TO THE PUBLIC FOR THE USE OF THE STREETS AND EASEMENTS SHOWN ON THIS PLAT, AND THE SAME SHALL BE OPEN TO THE PUBLIC FOR THE USE OF THE STREETS AND EASEMENTS SHOWN ON THIS PLAT.

IN WITNESS WHEREOF I DO HEREBY SET OUR HANDS THIS 23rd DAY OF JANUARY 1992.

STATE OF NEBRASKA  
 COUNTY OF SARPY  
 WILLIAM A. FRANKLIN, SURVEYOR

ACKNOWLEDGMENT OF NOTARY  
 I, WILLIAM A. FRANKLIN, DO HEREBY CERTIFY THAT THE FOREGOING IS A TRUE AND CORRECT COPY OF THE ORIGINAL PLAT AS FILED IN THE OFFICE OF THE STATE SURVEYOR, NEBRASKA, AND THAT THE SAME IS A TRUE AND CORRECT COPY OF THE ORIGINAL PLAT AS FILED IN THE OFFICE OF THE COUNTY SURVEYOR, SARPY COUNTY, NEBRASKA.

STATE OF NEBRASKA  
 COUNTY OF SARPY  
 WILLIAM A. FRANKLIN, SURVEYOR

APPROVAL OF SARPY COUNTY BOARD OF COMMISSIONERS  
 THIS PLAT OF CINNAMON ACRES REPLAT WAS APPROVED BY THE SARPY COUNTY BOARD OF COMMISSIONERS ON THIS 11th DAY OF JANUARY 1992.

APPROVAL OF SARPY COUNTY BUILDING INSPECTOR  
 I HEREBY APPROVE THIS PLAT OF CINNAMON ACRES REPLAT ON THIS 11th DAY OF JANUARY 1992.

SARPY COUNTY TREASURER  
 I HEREBY APPROVE THIS PLAT OF CINNAMON ACRES REPLAT ON THIS 11th DAY OF JANUARY 1992.

SARPY COUNTY CLERK  
 I HEREBY APPROVE THIS PLAT OF CINNAMON ACRES REPLAT ON THIS 11th DAY OF JANUARY 1992.

SARPY COUNTY SURVEYOR  
 I HEREBY APPROVE THIS PLAT OF CINNAMON ACRES REPLAT ON THIS 11th DAY OF JANUARY 1992.

SARPY COUNTY SURVEYOR  
 I HEREBY APPROVE THIS PLAT OF CINNAMON ACRES REPLAT ON THIS 11th DAY OF JANUARY 1992.

SARPY COUNTY SURVEYOR  
 I HEREBY APPROVE THIS PLAT OF CINNAMON ACRES REPLAT ON THIS 11th DAY OF JANUARY 1992.

SARPY COUNTY SURVEYOR  
 I HEREBY APPROVE THIS PLAT OF CINNAMON ACRES REPLAT ON THIS 11th DAY OF JANUARY 1992.

SARPY COUNTY SURVEYOR  
 I HEREBY APPROVE THIS PLAT OF CINNAMON ACRES REPLAT ON THIS 11th DAY OF JANUARY 1992.

SARPY COUNTY SURVEYOR  
 I HEREBY APPROVE THIS PLAT OF CINNAMON ACRES REPLAT ON THIS 11th DAY OF JANUARY 1992.