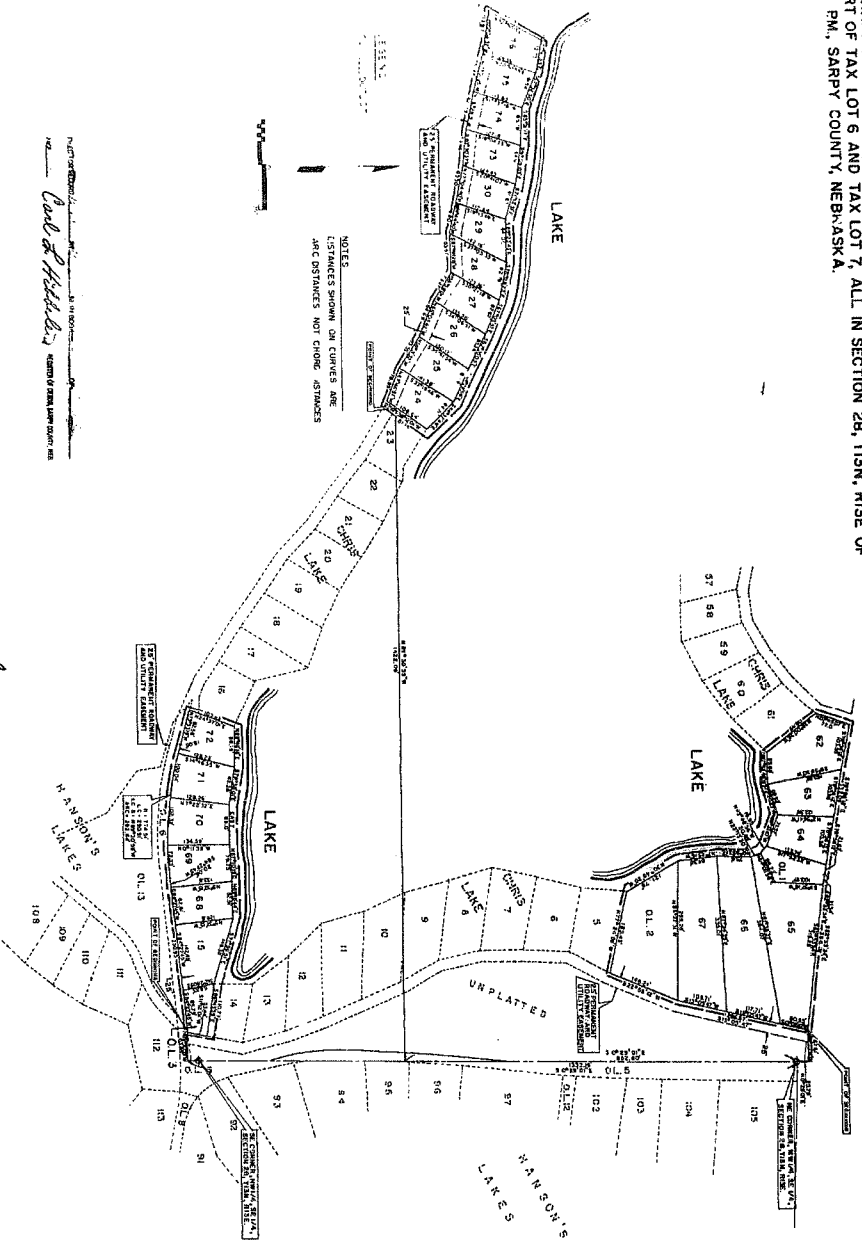


# CHRIS LAKE

(SEASONAL DWELLING DEVELOPMENT)

LOTS 15, 24 THRU 30, INCLUSIVE, 62 THRU 76, AND OUT LOTS THRU 3, INCLUSIVE, BEING A PLATTING OF PART OF THE NE 1/4 OF THE SW 1/4 PART OF THE NW 1/4 OF THE SE 1/4, AND PART OF THE SW 1/4 OF THE SE 1/4, TOGETHER WITH PART OF TAX LOT 6 AND TAX LOT 7, ALL IN SECTION 28, T19N, R15E OF THE 6TH PM, SARY COUNTY, NEBRASKA.



Sub 49376

11-21-75

Book 6  
Page 42



**STATEMENT OF PREPARATION**  
I, STATE ENGINEER JOHN L. HARRIS, do hereby certify that the above described plat was prepared and approved by me on this 21st day of November, 1975, in accordance with the provisions of the Nebraska Subdivision Act, Chapter 78, R.S., and the rules and regulations thereunder. The plat was prepared and approved by me on this 21st day of November, 1975, in accordance with the provisions of the Nebraska Subdivision Act, Chapter 78, R.S., and the rules and regulations thereunder. The plat was prepared and approved by me on this 21st day of November, 1975, in accordance with the provisions of the Nebraska Subdivision Act, Chapter 78, R.S., and the rules and regulations thereunder.

*John L. Harris*  
State Engineer

*William H. Curren*  
Commissioner of Agriculture

*William H. Curren*  
Commissioner of Agriculture

*William H. Curren*  
Commissioner of Agriculture

*William H. Curren*  
Commissioner of Agriculture

*William H. Curren*  
Commissioner of Agriculture