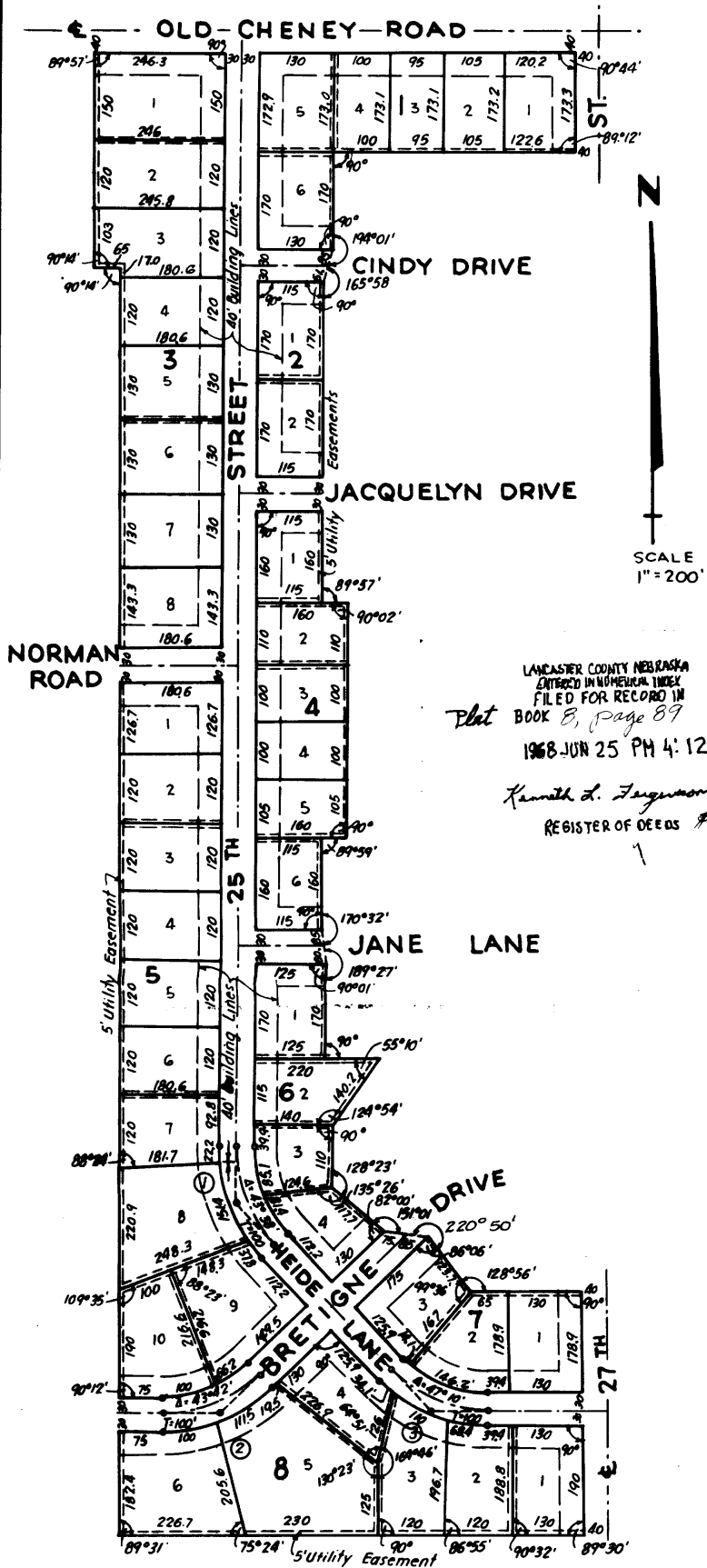


# CHEZ AMI KNOLLS, THIRD ADDITION



DEFLECTIONS		DEFLECTIONS	
OUTSIDE	INSIDE	OUTSIDE	INSIDE
37.8° - 3°52'	85.1° - 10°57'	34.1° - 3°46'	14.1° - 2°02'
151.4° - 19°33'	81.4° - 21°49'	110° - 15°45'	146.2° - 23°35'
22.2° - 21°49'		68.4° - 23°35'	
DEFLECTIONS		DEFLECTIONS	
OUTSIDE	INSIDE	OUTSIDE	INSIDE
100° - 10°11'	100° - 12°55'		
111.5° - 21°51'	66.2° - 21°51'		

## DEDICATION

The foregoing plat, known as, "Chez Ami Knolls, Third Addition," a replat located in the NE<sup>4</sup> Sec. 13, T.9N., R.6E. of the 6<sup>th</sup> P.M., Lancaster County, Nebraska, and more particularly described as: Beginning at a point 40 feet south of and 40 feet west of the NE corner of said NE<sup>4</sup> Sec. 13; thence south and parallel to the east line of said NE<sup>4</sup> a distance of 173.3 feet; thence 90°48' right a distance of 422.6 feet; thence 90°00' left a distance of 170 feet; thence 14°01' right a distance of 61.85 feet; thence 14°02' left a distance of 560.0 feet; thence 90°03' left a distance of 45.0 feet; thence 89°58' right a distance of 415.0 feet; thence 90°0' right a distance of 45.0 feet; thence 90°01' Lt. a distance of 160.0 feet; thence 9°28' left a distance of 60.85 feet; thence 9°27' right a distance of 170.0 feet; thence 90°00' left a distance of 95.0 feet; thence 124°50' right a distance of 140.2 feet; thence 34°54' left a distance of 110.0 feet; thence 51°37' left a distance of 117.7 feet; thence 28°59' left a distance of 75.85 feet; thence 40°50' right a distance of 123.7 feet; thence 51°04' left a distance of 195.0 feet; thence 90°00' right, parallel to and 40.0 feet west of the east line said N.E.<sup>4</sup>, a distance of 428.9 feet to a point on the south line said NE<sup>4</sup> 40.0 feet west of its southeast corner; thence 90°30' right along said south line NE<sup>4</sup> a distance of 826.7 feet to the southeast corner lot 1, Block 5, Chez Ami Knolls, 2<sup>nd</sup> Add; thence 90°29' right along the east line of Chez Ami Knolls, 2<sup>nd</sup> Add. and Chez Ami Knolls a distance of 2230.3 feet; thence 89°46' left a distance of 65.0 feet; thence 89°46' right a distance of 373.0 feet; thence 90°03' right, parallel to and 40.0 feet south of the north line said NE<sup>4</sup>, a distance of 856.5 feet to the point of beginning, is made with the free consent and in accordance with the desire of the undersigned, sole owner and proprietor, and the easements shown thereon hereby granted in perpetuity to the City of Lincoln, the Lincoln Telephone and Telegraph Company, and other public utilities, their successors and assigns, to construct, operate, maintain, repair and replace storm sewers, sanitary sewers, water mains, conduits, buried cables, poles and all appurtenances thereto, over, upon or under the easements, as shown on the foregoing plat. The streets shown thereon are hereby dedicated to the use of the public.

Witness our hands this 16 day of Feb., 1968.

BY: S. E. Capple PRESIDENT  
Laurence E. Dade Gladys T. Dade  
COMMONWEALTH COMPANY, A CORPORATION

## ACKNOWLEDGEMENT

STATE OF NEBRASKA }  
LANCASTER COUNTY } SS  
On this 16 day of February, 1968, before me, the undersigned, a Notary Public, duly commissioned, qualified for and residing in said County, personally came S. E. Capple, President of Commonwealth Company, a Corporation, to me personally known to be the identical person whose name is affixed to the foregoing instrument as President of said Corporation, and he acknowledged the same to be his voluntary act and deed and the voluntary act and deed of the said Commonwealth Company, and that the Corporate Seal of said corporation was affixed thereto by its authority.

Melba M. Hine  
NOTARY PUBLIC

My commission expires the 5th day of Feb., 1972.

STATE OF NEBRASKA }  
LANCASTER COUNTY } SS

On this 10 day of Feb., 1968, before me, the undersigned, a Notary Public, duly commissioned, qualified for and residing in said County, personally came Laurence E. Dade and Gladys T. Dade, husband and wife, to me personally known to be the identical persons whose names are affixed to the foregoing instrument and they each acknowledged the same to be their voluntary act and deed.

Kenneth B. ...  
NOTARY PUBLIC

My commission expires the 1st day of Aug., 1968.

## SURVEYOR'S CERTIFICATE

I hereby certify that I have accurately surveyed and staked out the foregoing plat of Chez Ami Knolls, Third Addition. Iron pipes are set at all lot corners and at other points marked thus • on the plat. All dimensions are in feet or decimals of a foot and are chord measurements unless otherwise shown.

Signed this 16<sup>th</sup> day of February, 1968.

M. C. Shiff  
ENGINEER E-265, L.S. 55

## APPROVAL

The foregoing plat was approved by the Lincoln City-Lancaster County Planning Commission on this 10<sup>th</sup> day of JANUARY, 1968.

ATTEST: Edwin ...  
CHAIRMAN

## ACCEPTANCE

The foregoing plat and dedication approved and accepted by the City Council of the City of Lincoln, Nebraska, by Ordinance No. 9456, passed the 15<sup>th</sup> day of April, 1968.

ATTEST: Harold W. Springer  
CITY CLERK