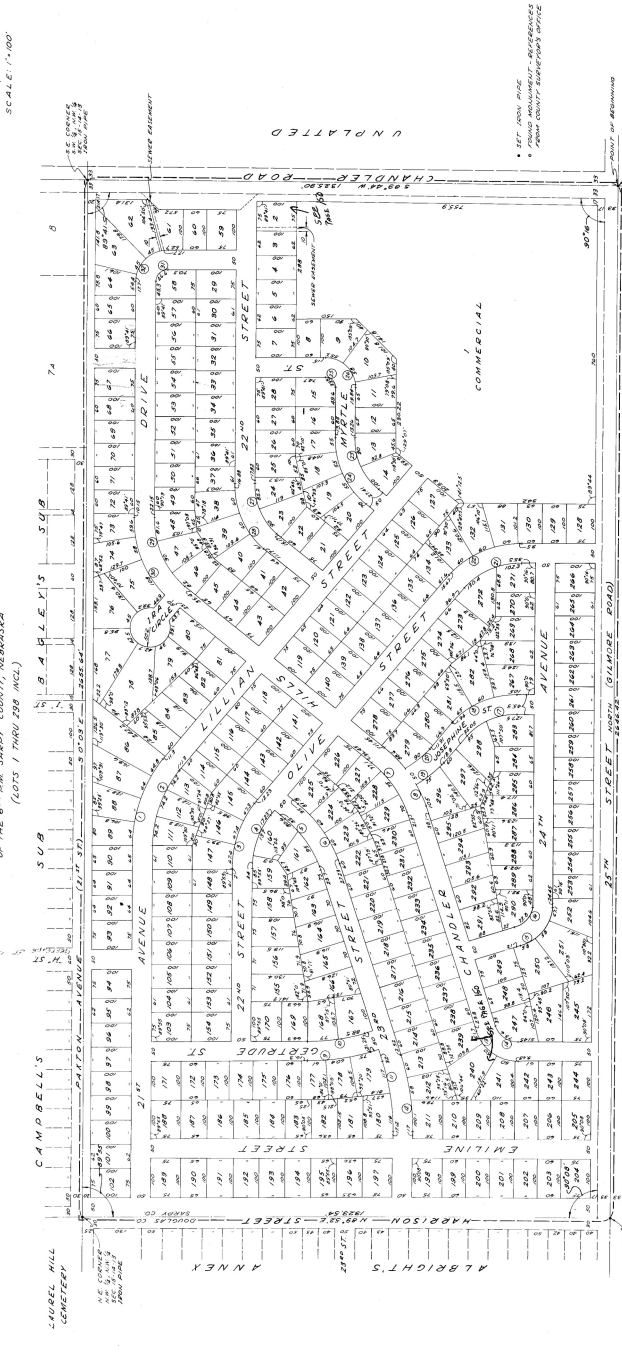


CHANDLER HILLS

A SUBDIVISION IN THE WEST HALF OF THE 6TH RANGE, SARDY COUNTY, NEBRASKA (LOTS 1 THRU 339 INCL.)



LAUREL HILL SEMETERY
 THE COUNTY OF SARDY NEBRASKA
 I, J. J. [Name], County Clerk, do hereby certify that the above described plat is a true and correct copy of the original filed in my office on this 19th day of February, 1960.

APPROVAL OF NOTARY
 I, [Notary Name], Notary Public, do hereby certify that the above described plat is a true and correct copy of the original filed in my office on this 19th day of February, 1960.

ACKNOWLEDGEMENT OF NOTARY
 I, [Notary Name], Notary Public, do hereby certify that the above described plat is a true and correct copy of the original filed in my office on this 19th day of February, 1960.

DEDICATION
 WE, THE UNDERSIGNED, do hereby dedicate to the public use of the State of Nebraska the above described streets and alleys, and we do hereby agree to pay for the same the same amount as if they were private streets and alleys.

UTILITIES EASEMENT
 I, [Name], do hereby grant to the public utility companies the right to use the above described streets and alleys for the purpose of installing and maintaining electric and telephone lines, poles, towers, and other utility structures.

APPROVAL OF COUNTY SURVEYOR
 I, [Surveyor Name], County Surveyor, do hereby certify that the above described plat is a true and correct copy of the original filed in my office on this 19th day of February, 1960.

COUNTY TREASURER'S CERTIFICATE
 I, [Treasurer Name], County Treasurer, do hereby certify that the above described plat is a true and correct copy of the original filed in my office on this 19th day of February, 1960.

APPROVAL OF PLANNING COMMISSION
 I, [Commissioner Name], Planning Commissioner, do hereby approve the above described plat on this 17th day of February, 1960.

APPROVAL OF BOARD OF COMMISSIONERS
 I, [Commissioner Name], Board of Commissioners, do hereby approve the above described plat on this 17th day of February, 1960.

SURVEYOR'S CERTIFICATE
 I, [Surveyor Name], County Surveyor, do hereby certify that the above described plat is a true and correct copy of the original filed in my office on this 19th day of February, 1960.

APPROVAL OF COUNTY SURVEYOR
 I, [Surveyor Name], County Surveyor, do hereby certify that the above described plat is a true and correct copy of the original filed in my office on this 19th day of February, 1960.

COUNTY TREASURER'S CERTIFICATE
 I, [Treasurer Name], County Treasurer, do hereby certify that the above described plat is a true and correct copy of the original filed in my office on this 19th day of February, 1960.

APPROVAL OF PLANNING COMMISSION
 I, [Commissioner Name], Planning Commissioner, do hereby approve the above described plat on this 17th day of February, 1960.

APPROVAL OF BOARD OF COMMISSIONERS
 I, [Commissioner Name], Board of Commissioners, do hereby approve the above described plat on this 17th day of February, 1960.

APPROVAL OF COUNTY SURVEYOR
 I, [Surveyor Name], County Surveyor, do hereby certify that the above described plat is a true and correct copy of the original filed in my office on this 19th day of February, 1960.

COUNTY TREASURER'S CERTIFICATE
 I, [Treasurer Name], County Treasurer, do hereby certify that the above described plat is a true and correct copy of the original filed in my office on this 19th day of February, 1960.

APPROVAL OF PLANNING COMMISSION
 I, [Commissioner Name], Planning Commissioner, do hereby approve the above described plat on this 17th day of February, 1960.

APPROVAL OF BOARD OF COMMISSIONERS
 I, [Commissioner Name], Board of Commissioners, do hereby approve the above described plat on this 17th day of February, 1960.