

ORDINANCE RECORD

No. 725-REDFIELD & COMPANY INC., OMAHA

ORDINANCE NO. 2208

AN ORDINANCE TO ANNEX TO THE CITY OF BELLEVUE, SARPY COUNTY, NEBRASKA, CERTAIN LANDS, LOTS AND REAL ESTATE LYING WITHIN THE BELOW DESCRIBED BOUNDARIES, TO THE CITY OF BELLEVUE, SARPY COUNTY, NEBRASKA, AND DESIGNATING AN EFFECTIVE DATE.

WHEREAS, ALL OF THE LOTS, LANDS AND REAL ESTATE LYING WITHIN THE BOUNDARIES DESCRIBED AS FOLLOWS, TO WIT:

SANITARY IMPROVEMENT DISTRICT NO. 7

A parcel of ground located in the Northwest Quarter of Section 15, Township 14 North, Range 13 East of the 6th Principal Meridian, Sarpy County, Nebraska.

Beginning at the southeast corner of Lot 62 on the north right-of-way line of Chandler Road. Running north approximately two thousand five hundred and eighty (2,580) feet to the northeast corner of Lot 102 where it intersects with the south line of Harrison Street. Then west along the south line of Harrison Street intersecting at the northwest corner of Lot 204 approximately one thousand two hundred and sixty (1,260) feet. Then south along the east side of 25th Street approximately two thousand five hundred and eight (2,580) feet to the southwest corner of Tax Lot 1E1 where it intersects with the north right-of-way line of Chandler Road. Then east along the north right-of-way of Chandler Road approximately one thousand six hundred and twenty (1,620) feet to the point of beginning.

ARE CONTIGUOUS AND ADJACENT TO THE CITY OF BELLEVUE, NEBRASKA, AND ARE URBAN OR SUBURBAN IN CHARACTER, AND

WHEREAS, SAID REAL ESTATE WILL RECEIVE MATERIAL BENEFITS AND ADVANTAGES FROM ANNEXATION TO THE SAID CITY.

NOW, THEREFORE, BE IT ORDAINED BY THE MAYOR AND COUNCIL OF THE CITY OF BELLEVUE, NEBRASKA:

Section 1. All of the real estate lying within the area heretofore described be and the same hereby is included within the boundaries and territory of the City of Bellevue, Nebraska, and said lands and the persons residing thereon shall hereafter be subject to all of the rules, regulations, ordinances, taxes, and all other burdens and benefits of other persons and territory

94-17064A

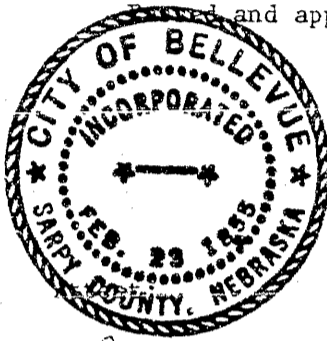
ORDINANCE RECORD

No. 728-REDFIELD & COMPANY INC., OMAHA

included within the City of Bellevue, Nebraska.

Section 2. This Ordinance shall take effect and be in full force and effect on and after January 1, 1983, and after its passage, approval, and publication according to law.

and approved this 15th day of July, 1982.



Robert M. Harwich
Mayor

Beverly Hrdy
City Clerk

First reading: June 28, 1982
Second reading: July 12, 1982
Third reading: _____

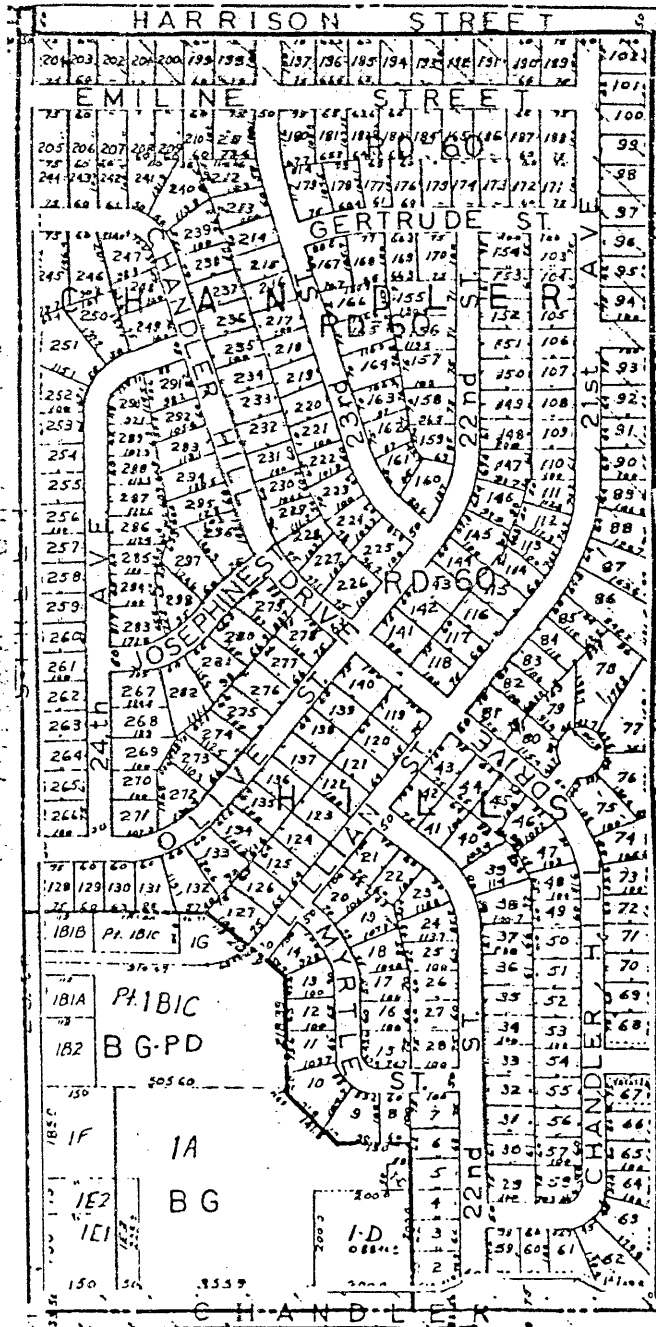
Proof	<u>ZWM</u>
D.E.	<u>[initials]</u>
Verify	<u>[initials]</u>
Filmed	_____
Checked	_____
Fee \$	<u>16400</u>

FILED SARPY CO. NE.
INSTRUMENT NUMBER
94-17064

94 JUL 28 PM 2:29

Carol A. Gavin
REGISTER OF DEEDS

94-17064 B



Sanitary Improvement District #7, Chandler Hills

CHANDLER HILLS

SCALE 1" = 200'

94-17064 C

25

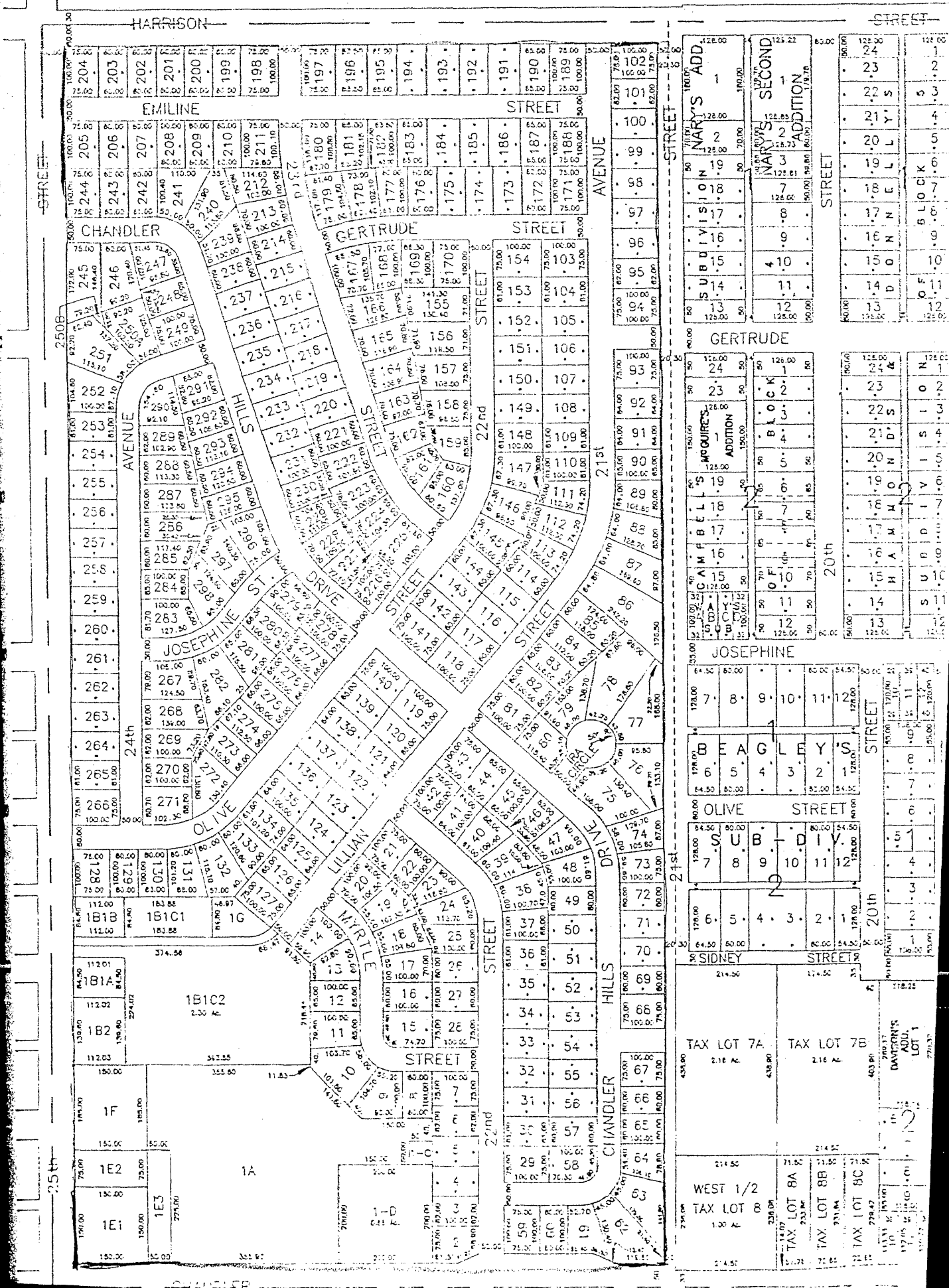
24

23

22

21

20



Block	Lot	Area	Notes
GERTRUDE	1	12.00	NARY'S ADD
	2	12.00	NARY'S SECOND ADDITION
	3	12.00	
	4	12.00	
	5	12.00	
	6	12.00	
	7	12.00	
	8	12.00	
	9	12.00	
	10	12.00	
	11	12.00	
	12	12.00	
JOSEPHINE	1	12.00	ACQUIRES ADDITION
	2	12.00	BLOCK
	3	12.00	
	4	12.00	
	5	12.00	
	6	12.00	
	7	12.00	
	8	12.00	
	9	12.00	
	10	12.00	
	11	12.00	
	12	12.00	
OLIVE	1	12.00	
	2	12.00	
	3	12.00	
	4	12.00	
	5	12.00	
	6	12.00	
	7	12.00	
	8	12.00	
	9	12.00	
	10	12.00	
	11	12.00	
	12	12.00	
MYRTLE	1	12.00	
	2	12.00	
	3	12.00	
	4	12.00	
	5	12.00	
	6	12.00	
	7	12.00	
	8	12.00	
	9	12.00	
	10	12.00	
	11	12.00	
	12	12.00	
LILLIAN	1	12.00	
	2	12.00	
	3	12.00	
	4	12.00	
	5	12.00	
	6	12.00	
	7	12.00	
	8	12.00	
	9	12.00	
	10	12.00	
	11	12.00	
	12	12.00	
CHANDLER HILLS	1	12.00	
	2	12.00	
	3	12.00	
	4	12.00	
	5	12.00	
	6	12.00	
	7	12.00	
	8	12.00	
	9	12.00	
	10	12.00	
	11	12.00	
	12	12.00	
TAX LOTS	7A	2.16 AC	
	7B	2.16 AC	
	WEST 1/2 TAX LOT 8	1.8 AC	
	TAX LOT 8A	1.8 AC	
	TAX LOT 8B	1.8 AC	
	TAX LOT 8C	1.8 AC	