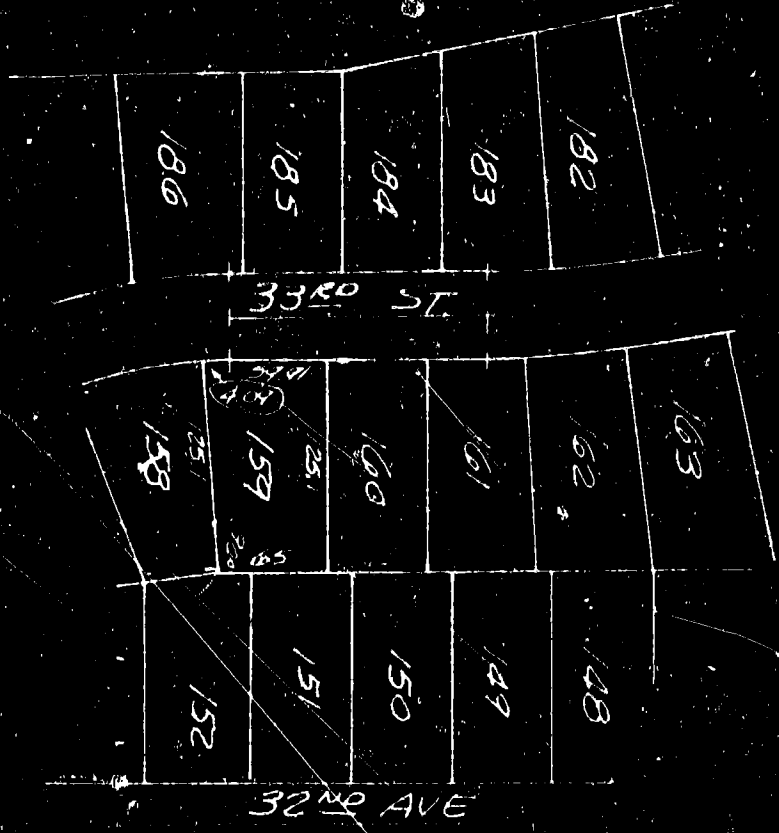


# CHANDLER ACRES

A PLATTING OF PART OF THE NW 1/4 OF SECTION 18, T14N, R13E, OF THE 6TH PM. SARPY COUNTY, NEBRASKA



THIS IS TO CERTIFY THAT THE DIMENSIONS AND CORNERS OF THE LOTS HERE SHOWN ARE AS SHOWN ON THE ORIGINAL PLATTING AND SURVEYORS REPORT HERETO, AND I CERTIFY THAT THE DIMENSIONS AND CORNERS ARE TRUE AND CORRECT AND ARE AS INDICATED BY THE DIMENSIONS.

JUNE 1960

WILLIAM L. ANDERSON LAND SURVEYOR NO. 63

STATE OF NEBRASKA }  
 Sarpy County }  
 William L. Anderson

Filed for record

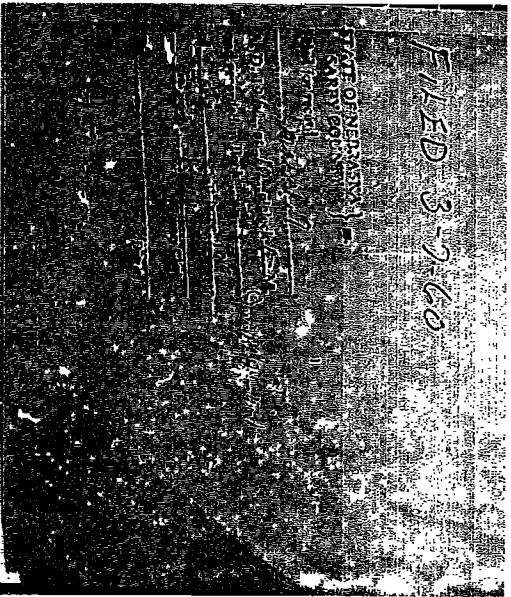
June 20

A. D. 1960 at 9:30 o'clock A. M.  
 and recorded in Book 286  
 of Sarpy County at page 181

County Clerk

By \_\_\_\_\_ 200 Dollars

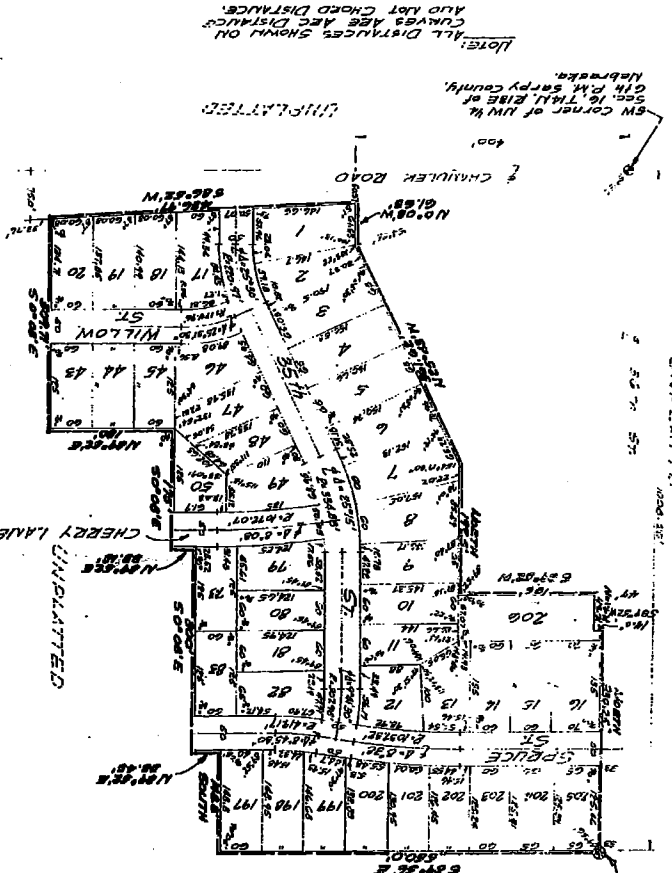




# CHANDLER ACRES

LOTS 1 THRU 20 INCL, 43 THRU 50 INCL, 78 THRU 89 INCL.  
AND 197 THRU 206 INCL.

A PLATTING OF PART OF THE NW 1/4 OF SEC. 16, T.14N, R.15E  
OF THE 6TH PM, SARDY COUNTY, NEBRASKA



*Notes:*  
 Notes checked against  
 plat: 11-23-52

ALL DISTANCES SHOWN ON CURVES ARE ARC DISTANCES AND NOT CHORD DISTANCES.

SW CORNER of NW 1/4 SEC. 16, T.14N, R.15E of 6th PM, SARDY COUNTY, NEBRASKA.

**LAND SURVEYOR'S CERTIFICATE**  
 I hereby certify that I have accurately surveyed and marked with true line and angles the above described land and that the same is as shown on the accompanying plat.

*[Signature]*  
 Date: Nov. 20, 1952

**COUNTY SURVEYOR'S CERTIFICATE**  
 This plat of Chandler Acres was approved and accepted by the County Surveyor on this 11th day of Nov. 1952.

*[Signature]*  
 County Surveyor of Sardy County, Nebraska

**COUNTY TREASURER'S CERTIFICATE**  
 I hereby certify that the proceeds of my office show no regular or special tax due or due to be paid on the property described in the certificate on this date.

*[Signature]*  
 County Treasurer of Sardy County, Nebraska

**APPROVAL OF BOARD OF COMMISSIONERS, SARDY COUNTY**  
 This plat of Chandler Acres was approved by the Board of Commissioners, Sardy County, Nebraska, this 15th day of November, 1952.

*[Signature]*  
 Chairman of Board of Commissioners, Sardy County, Nebraska

**ACKNOWLEDGMENT OF NOTARY**  
 I, Anna S. Schwartz, Notary Public for Nebraska, do hereby certify that the foregoing plat was duly acknowledged before me on this 15th day of November, 1952, before me, a Notary Public, and that the parties to the same are the persons named therein.

*[Signature]*  
 Notary Public for Nebraska

**RESOLUTIONS OF BOARD OF DIRECTORS OF SAID CORPORATION**  
 The Board of Directors of the above named corporation, meeting and acting lawfully, do hereby certify that the above described land is the property of said corporation and that the same is being conveyed to the public for public purposes and that the Board of Directors of said corporation has caused these resolutions to be recorded in the public records of the county of Sardy, Nebraska.

*[Signature]*  
 Chairman of Board of Directors

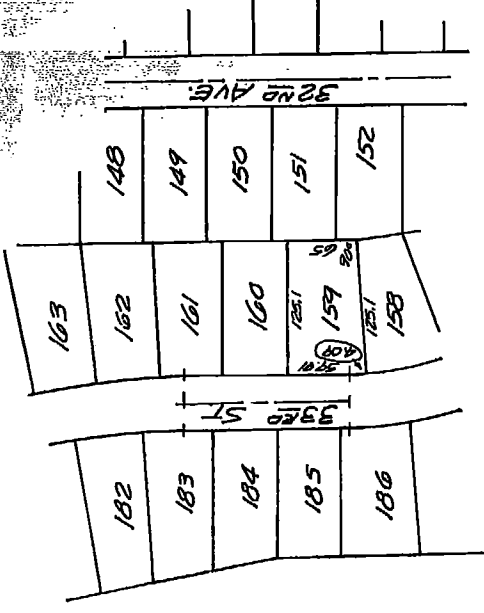


FILED 11-23-52

8/122  
 6:11-23-52

**CHANDLER ACRES**  
 A PLATTING OF PART OF THE NW 1/4 OF SECTION 16,  
 T14N, R13E, OF THE 6TH PM. SARPY COUNTY, NEBRASKA.

Recorded in the Register of Deeds Office in Sarpy County, Nebraska  
 on June 16, 1960, at 7:30 AM, Esther Ruff, County Clerk, 2 BC.



This is to certify that the dimensions encircled on this plat were shown  
 in error on the original platting and Surveyor's Certificate; and I further  
 certify that the shown encircled dimensions are true and correct and are  
 the originally intended dimensions.

16 June 1960

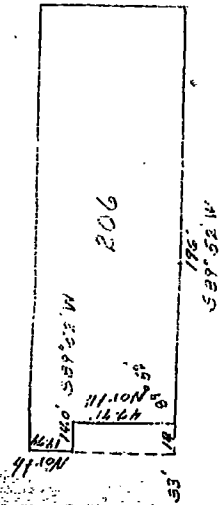


William L. Rynesron Land Surveyor No. 63  
 STATE OF NEBRASKA }  
 Sarpy County }  
 Filed for record

*William L. Rynesron*

June 20  
 A. D. 1960 at 9:30 o'clock A. M.  
 and recorded in Book 44-26  
 of Sarpy County, Nebraska page 521  
 County Clerk  
 By \_\_\_\_\_ Deputy

Corrected Surveyor's Certificate



58°52' N 176' To a point on the East Right-of-Way Line of 18th Street; thence due North along the East Right-of-Way Line of 18th Street, 47.71 feet; thence 58°52' W 141.10 feet; thence due North on East Right-of-Way Line of 18th Street 330.25 feet to the point of beginning.  
 Being the South 47.71 feet of the West 14 feet of Lot 206, Chandler's Acres.

Date: 12-4-59

Francis E. Rold

FRANCIS WALTZ  
COUNTY SURVEYOR  
SOUTH COUNTY, IOWA

*Francis E. Rold*