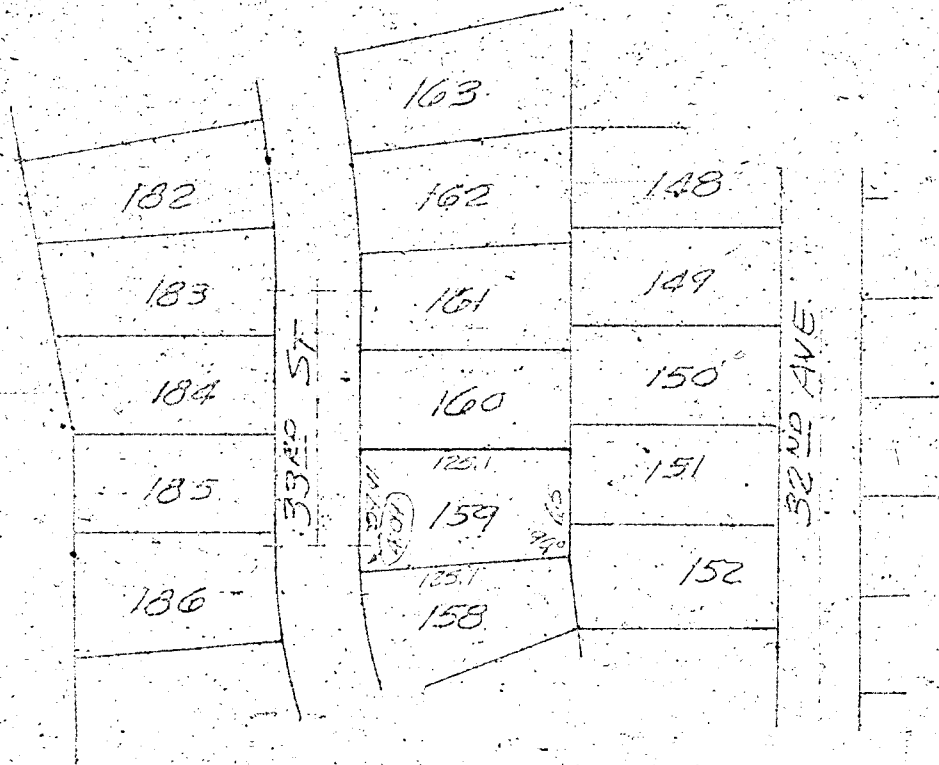


CHANDLER ACRES

A PLATTING OF PART OF THE N.W. 1/4 OF SECTION 16,
T14N, R13E, OF THE 6TH PM. SARPY COUNTY, NEBRASKA.



I do hereby certify that the dimensions enclosed on this plat were shown in or on the original platting and Surveyor's Certificate; and I further certify that the above enclosed dimensions are true and correct and are the originally intended dimensions.

18 June 1960

William L. Kynesron Land Surveyor No. 63

William L. Kynesron

STATE OF NEBRASKA }
SARPY COUNTY }

Filed for record

June 25

A. D. 1960 at 9:30 o'clock P. M.

and recorded in Book #26

of Map Rec. at page 531

County Clerk

By

2.00

Deputy

