

90-10491

SURVEYOR'S CERTIFICATE

I hereby certify that I have examined the original plat and that all statements have been compared with the actual survey and that the plat is a true and correct copy of the original survey. I further certify that I have examined the original plat and that all statements have been compared with the actual survey and that the plat is a true and correct copy of the original survey.

Witness my hand and official seal the day and year last above written.



Robert Clark
 Robert Clark, Esq.
 October 8, 1990

Know all men by these presents that we, Construction Science, Inc. and First Bank, N.A., Omaha, Nebraska, of the property owned and located in Sary County, Nebraska, as shown on the attached plat, have caused said land to be subdivided into lots and streets known as CHALCO POINTE (lots to be numbered as shown), and we do hereby dedicate to the public for public use the same as shown on this plat. We do further grant a perpetual easement to the public for the use of said streets and avenues as shown on this plat, which has been granted in accordance with the provisions of the Nebraska Subdivision Act, Chapter 78-1101, R.S., and we do hereby certify that the same has been duly recorded in the public records of Sary County, Nebraska, and that the same is a true and correct copy of the original survey.

IN WITNESS WHEREOF, we do hereunto set our hands this 9th day of October, 1990.

CONSTRUCTION SCIENCE, INC.
 FRIESTER BANK, N.A. OMAHA
 JOHN R. STANLEY
 Senior Vice President

ACKNOWLEDGMENT OF NOTARY
 STATE OF NEBRASKA
 COUNTY OF SARY
 I, Notary Public, do hereby certify that the foregoing is a true and correct copy of the original survey as shown on this plat.

My Commission expires June 14, 1993.

CHALCO POINTE

LOTS 1 THRU 125 INCLUSIVE
 BEING A PART OF THE SURVEY OF CHALCO POINTE, SARY COUNTY, NEBRASKA, AS SHOWN ON THE ORIGINAL PLAT OF SAID SURVEY, AS FILED IN THE PUBLIC RECORDS OF SAID COUNTY, NEBRASKA, ON THIS 27th DAY OF OCTOBER, 1990.

SARY COUNTY TREASURER'S CERTIFICATE
 This is to certify that I find no regular or special tax due on the above described land, and I have no record in the Surveyor's Certificate and am approved in this plat on this 14th day of October, 1990.

Stephen J. Bergstrom
 Stephen J. Bergstrom
 Sary County Treasurer

SARY COUNTY BOARD OF COMMISSIONERS APPROVAL
 This final plat of CHALCO POINTE was approved by the Board of Commissioners on this 2nd day of October, 1990.

John J. Schuman
 Chairman, Sary County Board of Commissioners

SARY COUNTY PLANNING COMMISSION APPROVAL
 This final plat of CHALCO POINTE was approved by the Planning Commission on this 2nd day of October, 1990.

John J. Schuman
 Chairman, Sary County Planning Commission

SARY COUNTY BUILDING INSPECTOR APPROVAL
 This final plat of CHALCO POINTE was approved on this 2nd day of October, 1990.

John J. Schuman
 Sary County Building Inspector

REVIEW OF SARY COUNTY SURVEYOR
 This plat of CHALCO POINTE was reviewed by the office of the Sary County Surveyor on this 2nd day of October, 1990.

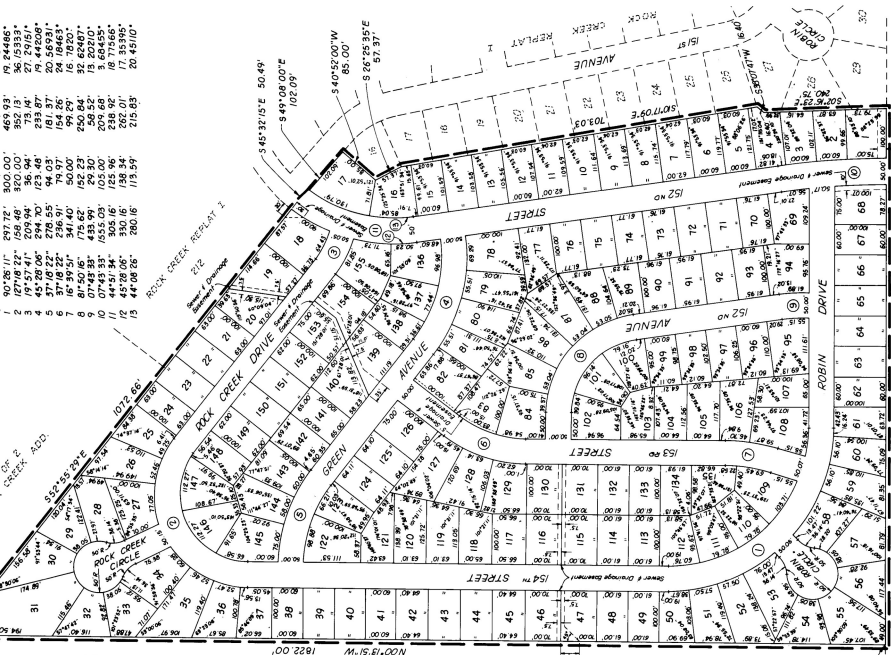
John J. Schuman
 Sary County Surveyor

ACKNOWLEDGMENT OF NOTARY
 STATE OF NEBRASKA
 COUNTY OF SARY
 I, Notary Public, do hereby certify that the foregoing is a true and correct copy of the original survey as shown on this plat.

My Commission expires March 3, 1994.

11-09-90 8:49 am, 90-10491

NO.	Δ	β	R	CURVE DATA	L	D
1	90°28'17"	817.72'	300.00'		469.93'	91.74486°
2	171°51'41"	209.94'	36.94'		73.94'	271.2351°
3	97°51'41"	209.94'	36.94'		333.87'	97.46208°
4	45°28'06"	244.30'	43.48'		154.26'	24.19463°
5	37°18'22"	236.91'	79.97'		99.84'	16.7920°
6	16°39'55"	341.00'	50.00'		56.52'	13.20210°
7	07°48'35"	433.99'	29.30'		234.92'	8.37466°
8	07°41'34"	355.08'	121.90'		302.01'	17.33395°
9	45°28'06"	244.30'	43.48'		215.89'	20.45102°



SCALE 1"=100 FEET
 UNPLATTED
 POINT OF BEGINNING

My Commission expires June 14, 1993.