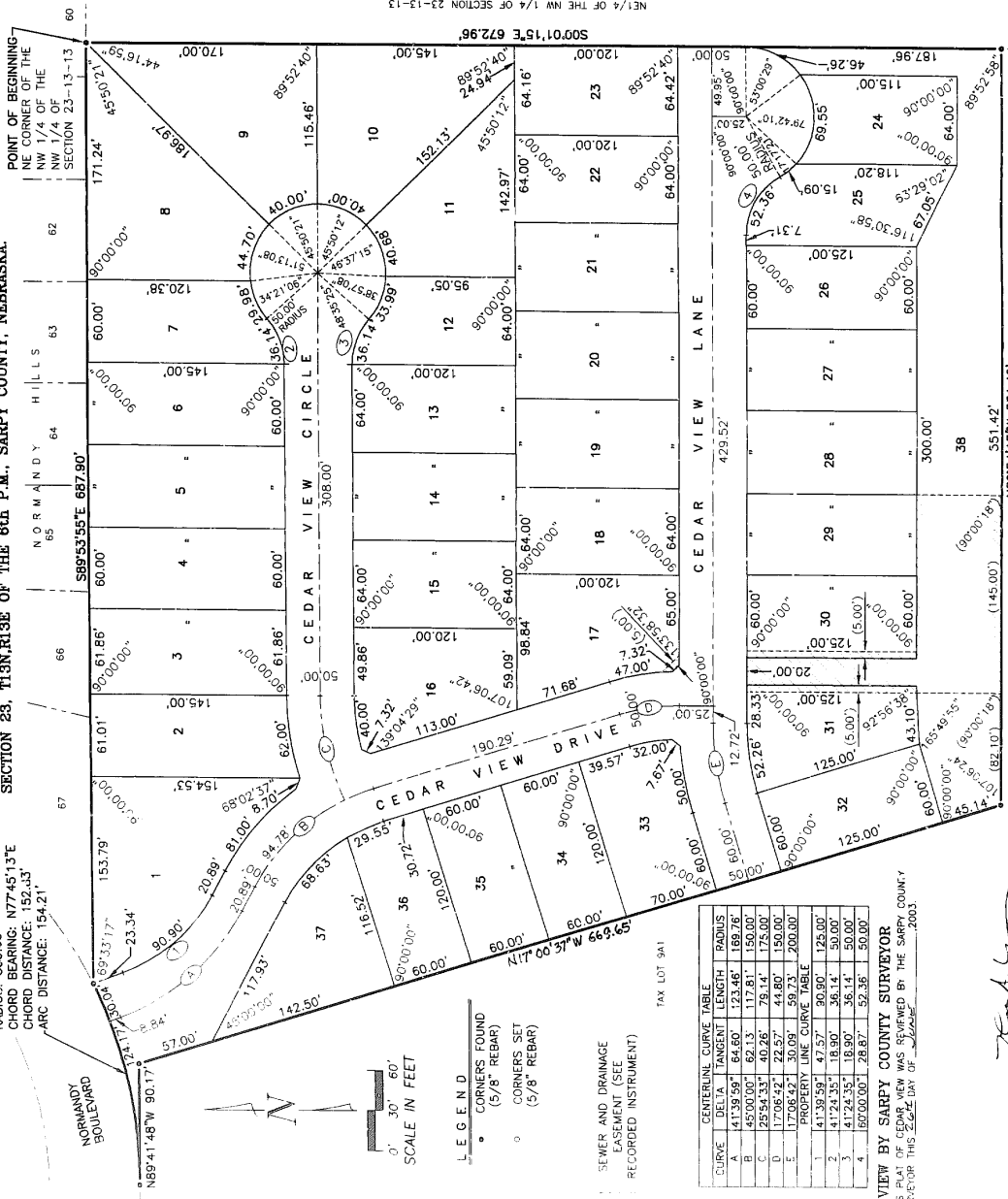


2003-39145

# CEDAR VIEW

LOTS 1 THROUGH 38  
 A PLATTING OF TAX LOTS 9A2 AND 10B IN THE NW 1/4 OF SECTION 28, T13N, R13E OF THE 6th P.M., SARRY COUNTY, NEBRASKA.

RADIUS: 333.00'  
 CHORD BEARING: N77°45'13"E  
 CHORD DISTANCE: 152.43'  
 ARC DISTANCE: 154.21'



CURVE	GENERAL CURVE TABLE	ARC	CHORD	BEARING	ANGLE	AREA
A	41,381.59'	47.57'	30.90'	125.00'	125.00'	125.00'
B	41,242.35'	18.90'	36.14'	50.00'	50.00'	50.00'
C	41,242.35'	18.90'	36.14'	50.00'	50.00'	50.00'
D	1,706.42'	30.09'	59.73'	200.00'	200.00'	200.00'
E	1,706.42'	30.09'	59.73'	200.00'	200.00'	200.00'

REVIEW BY SARRY COUNTY SURVEYOR  
 THIS PLAT OF CEDAR VIEW WAS REVIEWED BY THE SARRY COUNTY SURVEYOR THIS DATE DAY OF 2003.

SARRY COUNTY SURVEYOR

**SURVEYOR'S CERTIFICATE**  
 I, THE SURVEYOR, DESCRIBED HEREON AND THAT PERMANENT MARKERS HAVE BEEN FOUND OR SET AT ALL CORNERS OF SAID BOUNDARY AND THAT CURVES WITHIN SAID SUBDIVISION TO BE KNOWN AS CEDAR VIEW, LOTS 1 THROUGH 38, BEING A PLATTING OF THE NW 1/4 OF SECTION 28, T13N, R13E OF THE 6th P.M., SARRY COUNTY, NEBRASKA, DESCRIBED AS FOLLOWS: BEGINNING AT THE CORNER OF SAID NW 1/4 OF THE NW 1/4 OF THE SE CORNER OF SAID TAX LOT 9A2; THENCE N89°54'13"W 351.42 FEET ON THE SOUTH LINE OF SAID TAX LOT 9A2 TO THE SW CORNER THEREOF; THENCE N17°00'37"W 698.68 FEET ON THE SOUTH LINE OF SAID TAX LOT 10B TO THE SW CORNER THEREOF; THENCE N89°41'48"W 90.17 FEET ON THE SOUTH LINE OF SAID TAX LOT 10B TO A NON-TANGENT 333.00 FOOT RADIUS CURVE TO THE LEFT, CHORD BEARING N77°45'13"E, CHORD DISTANCE 152.43 FEET, AN ARC DISTANCE OF 154.21 FEET; THENCE S89°33'55"E 887.90 FEET ON THE NORTH LINE OF SAID TAX LOTS 10B AND 9A2 TO THE POINT BEGINNING. CONTAINING 10.10 ACRES MORE OR LESS.



APRIL 1, 2003  
 DATE  
 SARRY COUNTY, NEBRASKA  
 COUNTY  
 SARRY COUNTY, NEBRASKA  
 COUNTY  
 SARRY COUNTY, NEBRASKA  
 COUNTY

**DEDICATION**  
 WHEREAS, THE SURVEYOR, DESCRIBED HEREON AND THAT PERMANENT MARKERS HAVE BEEN FOUND OR SET AT ALL CORNERS OF SAID BOUNDARY AND THAT CURVES WITHIN SAID SUBDIVISION TO BE KNOWN AS CEDAR VIEW, LOTS 1 THROUGH 38, BEING A PLATTING OF THE NW 1/4 OF SECTION 28, T13N, R13E OF THE 6th P.M., SARRY COUNTY, NEBRASKA, DESCRIBED AS FOLLOWS: BEGINNING AT THE CORNER OF SAID NW 1/4 OF THE SE CORNER OF SAID TAX LOT 9A2; THENCE N89°54'13"W 351.42 FEET ON THE SOUTH LINE OF SAID TAX LOT 9A2 TO THE SW CORNER THEREOF; THENCE N17°00'37"W 698.68 FEET ON THE SOUTH LINE OF SAID TAX LOT 10B TO THE SW CORNER THEREOF; THENCE N89°41'48"W 90.17 FEET ON THE SOUTH LINE OF SAID TAX LOT 10B TO A NON-TANGENT 333.00 FOOT RADIUS CURVE TO THE LEFT, CHORD BEARING N77°45'13"E, CHORD DISTANCE 152.43 FEET, AN ARC DISTANCE OF 154.21 FEET; THENCE S89°33'55"E 887.90 FEET ON THE NORTH LINE OF SAID TAX LOTS 10B AND 9A2 TO THE POINT BEGINNING. CONTAINING 10.10 ACRES MORE OR LESS.

**ACKNOWLEDGEMENT OF NOTARY**  
 I, MELVIN SUBBECK, PRESIDENT OF CEDAR VIEW DEVELOPMENT, INC., DO HEREBY CERTIFY THAT THE FOREGOING DEDICATION WAS ACKNOWLEDGED BEFORE ME THIS 1st DAY OF APRIL, 2003 BY MELVIN SUBBECK, PRESIDENT OF CEDAR VIEW DEVELOPMENT, INC. ON BEHALF OF SAID CEDAR VIEW DEVELOPMENT, INC.

**COUNTY TREASURER'S CERTIFICATE**  
 THIS IS TO CERTIFY THAT I FIND NO REGULAR OR SPECIAL TAXES DUE OR DELINQUENT AGAINST THE PROPERTY DESCRIBED IN THE SURVEY HEREON AND EMERGENCY PLATTING OF THIS PLAT, AS SHOWN BY THE RECORDS OF THIS OFFICE THIS 1st DAY OF APRIL, 2003.

**APPROVAL OF BELLEVUE CITY PLANNING COMMISSION**  
 THIS PLAT OF CEDAR VIEW WAS APPROVED BY THE BELLEVUE CITY PLANNING COMMISSION THIS 28th DAY OF APRIL, 2003.

**APPROVAL OF BELLEVUE CITY COUNCIL**  
 THIS PLAT OF CEDAR VIEW WAS APPROVED AND ACCEPTED BY THE BELLEVUE CITY COUNCIL THIS 28th DAY OF APRIL, 2003. APPROVAL OF THIS PLAT BECOMES NULL AND VOID IF NOT RECORDED WITHIN 90 DAYS OF THE ABOVE DATE.