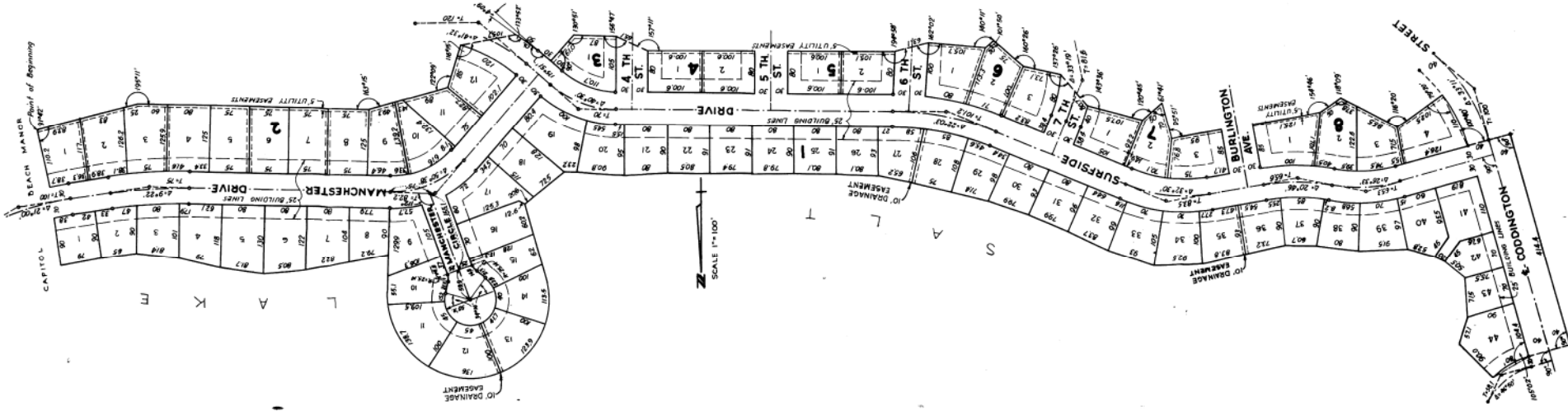


CAPITOL BEACH MANOR SECOND ADDITION



DEDICATION

The foregoing plat known as Capitol Beach Manor, Second Addition, a part of lot part of Lots 49 and 56, irregular front in the S¹ Sec. 21, T10N, R6E, of the 6th PM, Lancaster County, Nebraska, lying north and east of a line described as follows: Beginning at a point of the southwest corner of Lot J, Block 3, Capitol Beach Manor, thence westerly on a line, named 9442' Lt from the west line of said Lot J, thence 157' Lt a distance of 440.0 feet; thence 1645' Lt a distance of 157.6 feet; thence 5715' Lt a distance of 86.0 feet; thence 63745' Rt a distance of 105.7 feet; thence 46708' Rt a distance of 50.0; thence 4709' Rt a distance of 30.0 feet; thence 90700' Lt a distance of 61.0 feet; thence 49709' Rt a distance of 870 feet; thence 23713' Rt a distance of 65.1 feet; thence 22749' Lt a distance of 466.9 feet; thence 14730' Rt a distance of 61.1 feet; thence 17758' Rt a distance of 102.5 feet; thence 39735' Lt a distance of 20.0 feet; thence 73744' Rt a distance of 274.4 feet; thence 19744' Lt a distance of 73.1 feet; thence 57444' Lt a distance of 80.0 feet; thence 34724' Lt a distance of 107.5 feet; thence 59715' Lt a distance of 90.0 feet; thence 118719' Rt a distance of 70.0 feet; thence 84709' Lt a distance of 280.1 feet; thence 2574' Lt a distance of 50.0 feet; thence 61757' Rt a distance of 123.3 feet; thence 6140' Lt a distance of 102.5 feet to a curve having a radius of 295.67 feet; thence 100740' Rt to a chord of said curve, said chord being 110.0 feet long; thence along said curve a chord distance of 110.0 feet; thence 79730' Lt a distance of 80.0 feet; thence 90700' Rt a distance of 114.4 feet; thence 90700' Rt a distance of 80.0 feet to the point of beginning of a curve bearing east and north and having a radius of 154.16 feet and whose initial tangent coincides with last described course; thence 15702' Lt to an 80.0 foot chord of said curve; thence along said curve a chord distance of 80.0 feet. The foregoing is with the free consent and in accordance with the desire of the undersigned, sole owner and proprietor, and the easements shown thereon are hereby granted in perpetuity to the City of Lincoln, the Consumers Public Power District, the Lincoln Telephone and Telegraph Co., and other public utilities, their successors and assigns, to construct, operate, maintain, repair and replace storm sewers, sanitary sewers, water mains, gas mains, electric lines, and other public utilities, and to use the same upon or under the easements as shown on the foregoing plat. The streets shown thereon are hereby dedicated to the use of the public.

Witness my hand this 9 day of April, 1965.

BY: *[Signature]*
PRESIDENT

ACKNOWLEDGEMENT

STATE OF NEBRASKA }
LANCASTER COUNTY, }
On this 9 day of April, 1965, before, the undersigned, a Notary Public, fully commissioned, qualified for and residing in said County, personally came S. C. Cappel, President of Capitol Beach Incorporated, to me personally known to be the identical person whose name is affixed to the foregoing instrument as the Mayor of said City of Lincoln, Nebraska, and the voluntary act and deed of said City of Beach Incorporated and that the Corporate Seal of said Corporation was affixed thereto by its authority.

[Signature]
NOTARY PUBLIC

APPROVAL

The foregoing plat was approved by the Lincoln City-Lancaster County Planning Commission on this 14th day of April, 1965.

ATTEST: *[Signature]*
CHAIRMAN

ACCEPTANCE

The foregoing plat and dedication approved and accepted by the City Council of the City of Lincoln, Nebraska, by Ordinance No. 87235, passed the 27th day of June, 1965.

ATTEST: *[Signature]*
CITY CLERK

SURVEYOR'S CERTIFICATE

I hereby certify that I have accurately surveyed and staked out the foregoing plat of Capitol Beach Manor, Second Addition. Iron pipes are set at all lot corners and at other points marked thus * on the plat. All dimensions are in feet or decimals of a foot and are chord measurements unless otherwise shown.

Signed this 28th day of April, 1965.

[Signature]
ENGINEER

STATE OF NEBRASKA }
LANCASTER COUNTY, }
I, the undersigned, a Notary Public, do hereby certify that the foregoing instrument was duly executed and acknowledged before me on this 9 day of April, 1965, by S. C. Cappel, President of Capitol Beach Incorporated, and that the Corporate Seal of said Corporation was affixed thereto by its authority.

[Signature]
NOTARY PUBLIC