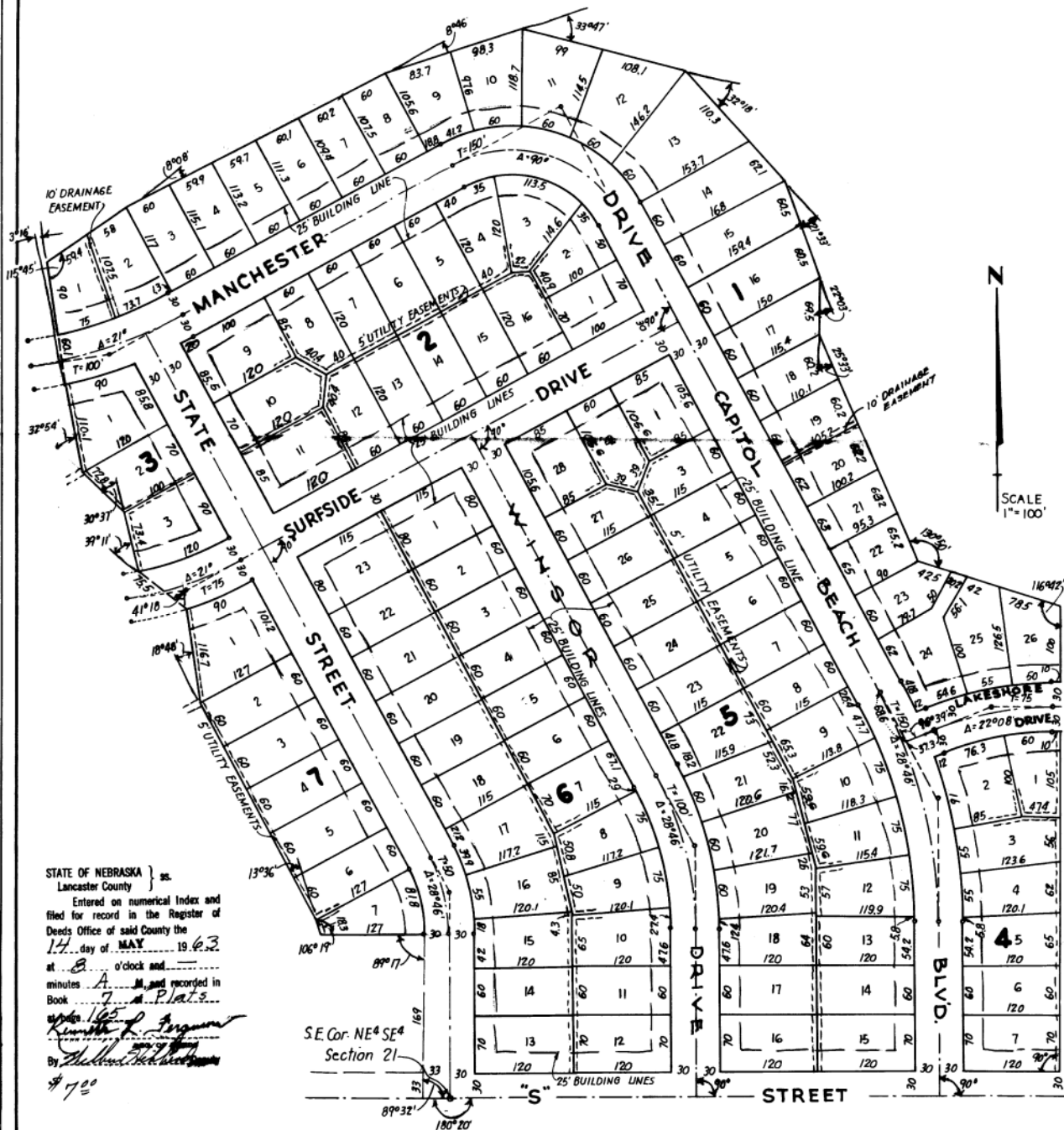


# CAPITOL BEACH MANOR



STATE OF NEBRASKA } ss.  
 Lancaster County  
 Entered on numerical index and  
 filed for record in the Register of  
 Deeds Office of said County the  
 14 day of MAY 19 63  
 at 8 o'clock and  
 minutes A.M. and recorded in  
 Book 7 of Plat.  
 165  
 By *[Signature]*  
 #700

S.E. Cor. NE<sup>4</sup> SE<sup>4</sup>  
 Section 21

## DEDICATION

The foregoing plat, known as "Capitol Beach Manor," a replat of part of the NE<sup>4</sup> SE<sup>4</sup> Sec. 22 and the NW<sup>4</sup> SW<sup>4</sup> Sec. 22, T.10N., R.6 E. of the 6th P.M., Lancaster County, Nebraska, and particularly described as beginning at a point on the north line of S Street 750 feet east of the E. of State Street, thence 783 feet westerly along the north line of S Street to the west line of State Street; thence 90°28' Rt. a distance of 169 feet; thence 90°33' Lt. a distance of 116.7 feet; thence 73°41' Rt. a distance of 18.3 feet; thence 13°36' Lt. a distance of 300 feet; thence 18°48' Rt. a distance of 116.7 feet; thence 41°18' left a distance of 75.5 feet; thence 39°11' Rt. a distance of 73.4 feet; thence 30°37' Lt. a distance of 72.8 feet; thence 32°54' right a distance of 110.1 feet; thence 3°16' Rt. a distance of 150.1 feet; thence 64°15' Rt. a distance of 117.4 feet; thence 8°08' Rt. a distance of 359.9 feet; thence 8°46' Rt. a distance of 182 feet; thence 33°47' Rt. a distance of 207.1 feet; thence 32°18' right a distance of 172.4 feet; thence 21°33' right a distance of 121 feet; thence 22°03' Rt. a distance of 69.5 feet; thence 25°33' Lt. a distance of 311 feet; thence 49°10' Lt. a distance of 183.2 feet; thence 63°18' Rt. a distance of 578 feet to the point of beginning of parcel of land herein described. The foregoing is with the free and in accordance with the desire of the undersigned, sole owner and proprietor, together with easements as shown on the foregoing plat for the construction and maintenance of sewers, conduits, pole lines and drainageways. The streets shown thereon are hereby dedicated to the use of the public.

Witness my hand this 10 day of APRIL, 1963.

BY: *[Signature]*  
 PRESIDENT

CAPITOL BEACH INCORPORATED

## ACKNOWLEDGEMENT

STATE OF NEBRASKA } ss  
 LANCASTER COUNTY }

On this 10 day of APRIL, 1963, before me, the undersigned, Notary Public, duly commissioned, qualified for and residing in said County, personally appeared S. E. Capple, President of Capitol Beach Incorporated to me personally known to be the identical person whose name is affixed to the foregoing instrument as President of said Corporation and he acknowledged the same to be his voluntary act and deed and the voluntary act and deed of the said Capitol Beach Incorporated, and that the Corporate Seal of said Corporation was affixed thereto by its authority.

*[Signature]*  
 NOTARY PUBLIC

My commission expires the 14 day of October, 1964.

## APPROVAL

The foregoing plat was approved by the Lincoln City-Lancaster County Planning Commission, on this 10<sup>th</sup> day of APRIL, 1963.

ATTEST: *[Signature]*  
 CHAIRMAN

## ACCEPTANCE

The foregoing plat and dedication approved and accepted by the City Council of the City of Lincoln, Nebraska, by Ordinance No. 8022, passed the 29<sup>th</sup> day of April, 1963.

ATTEST: *[Signature]*  
 CITY CLERK

## SURVEYOR'S CERTIFICATE

I hereby certify that I have accurately surveyed and stake out the foregoing plat of Capitol Beach Manor. Iron pipes are set at all lot corners and at other points marked thus \* on the plat. All dimensions are in feet and decimals of a foot and are chord measurements unless otherwise shown.

Signed this 10<sup>th</sup> day of APRIL, 1963.

*[Signature]*  
 ENGINEER E 205 K.S. 55