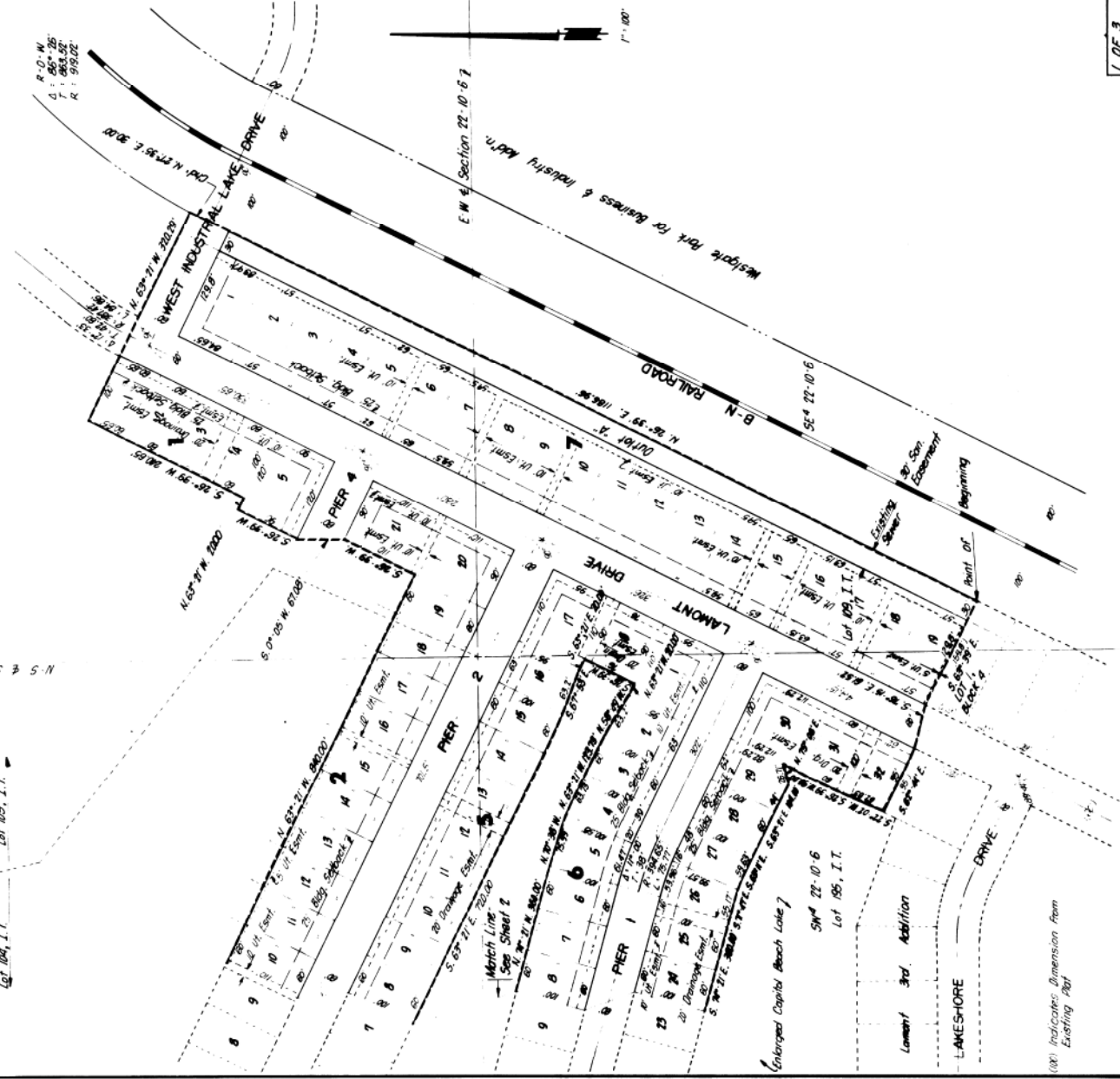
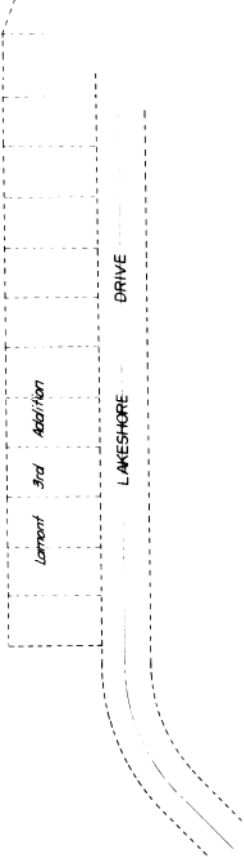
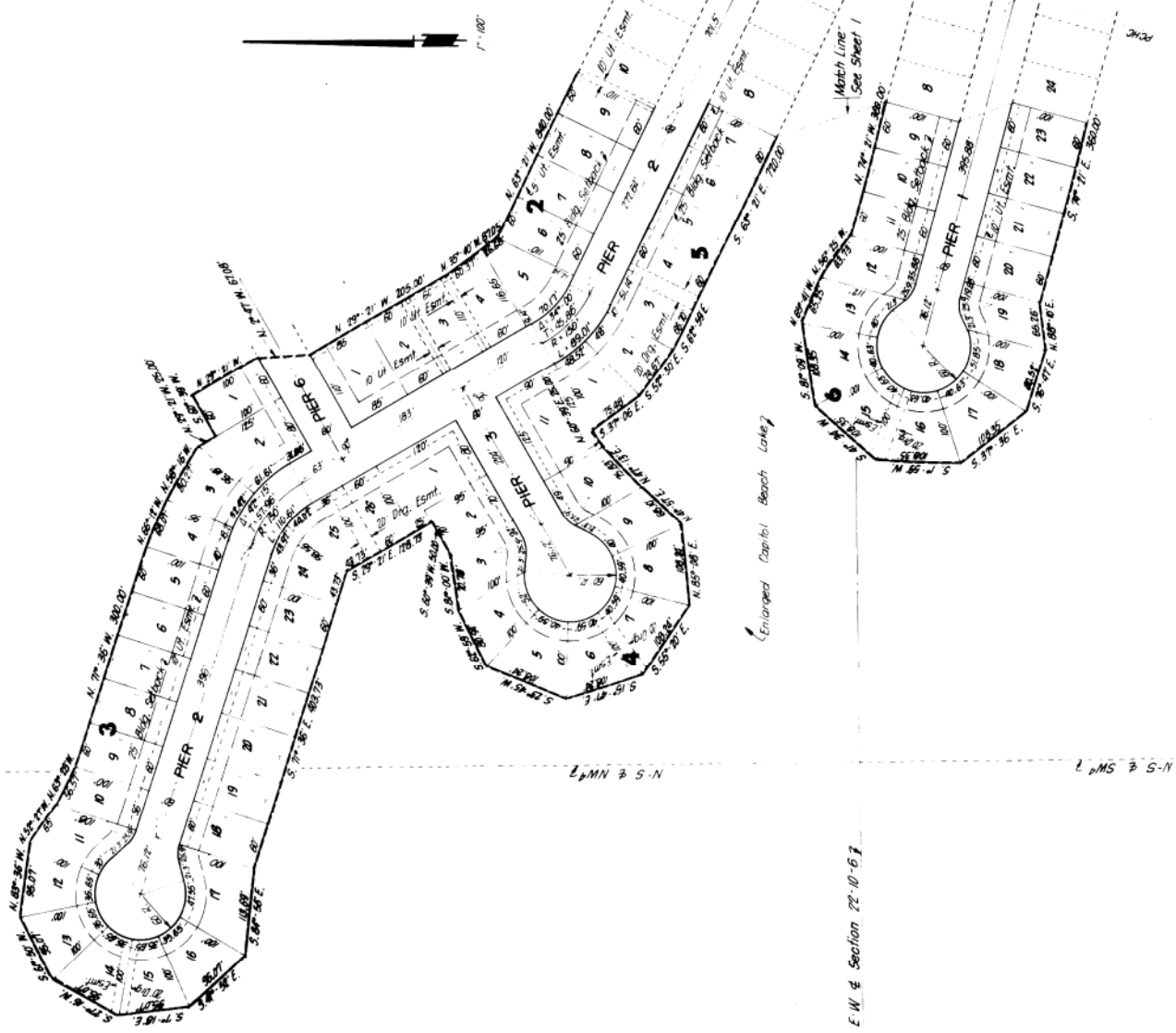


CAPITOL BEACH EAST ADDITION



CAPITOL BEACH EAST ADDITION



CAPITOL BEACH EAST ADDITION

DEDICATION

Dedication of the foregoing plat, known as "CAPITOL BEACH EAST ADDITION," and as described in the Surveyor's Certificate to this plat, is made with the free consent and in accordance with the desire of the undersigned owner of the same shown hereon and hereby granted in perpetuity to the City of Lincoln, Nebraska, to be known as "Capitol Beach East Addition," for the purpose of constructing, maintaining, repairing and replacing storm sewers, sanitary sewers, water mains, conduits, buried cables, wires, poles, all commercial antenna television facilities, and all appurtenances thereto, over, upon or under the easements as shown on the foregoing plat. The streets shown hereon are hereby dedicated to the use of the public.

Witness my hand this 27th day of November, 1978.

CAPITOL BEACH, INC.

By:  S. E. Copley, Sr.

STATE OF NEBRASKA) SS
LANCASTER COUNTY)

On this 27th day of November, 1978, before me, the undersigned, a Notary Public, duly commissioned, qualified for my office and duly sworn, appearing before me in person and known to me to be the person named in the foregoing instrument, and personally known to be the identical person whose name is affixed to the foregoing instrument, President of the said corporation, and he acknowledged the same to be his voluntary act and deed and the voluntary act and deed of said Capitol Beach, Inc., and that the corporate seal of said corporation was affixed thereto by its authority.




Notary Public

My commission expires the 27th day of January, 1979.

A C K N O W L E D G E M E N T

SURVEYOR'S CERTIFICATE

I hereby certify that I have accurately surveyed and staked out the foregoing plat, known as "CAPITOL BEACH EAST ADDITION", a subdivision of a portion of Lot 195, I.T., a portion of Lot 109, I.T., a portion of Lot 104, I.T., a portion of Lot 105, I.T., and a portion of the West 1/2 NW 1/4, all located in Section 22, T. 10 N., R. 6 E., of the 6th P.M., Lancaster County, Nebraska, and more particularly described as follows:

beginning at the northeast corner of Lot 1, Block 4, Lamont 3rd Addition, and extending, thence N. 26° - 39' E. 1186.00 feet to an iron pipe monument at the right having a central angle of 1'-52'-13" a radius of 919.02 feet, and an arc length of 30.01 feet;

thence N. 27° - 38' E., a chord length of 30.00 feet to the point of tangency;

thence N. 63° - 21' W. 320.29 feet;
thence S. 26° - 39' W. 240.65 feet;
thence N. 26° - 39' E. 90.00 feet;
thence S. 26° - 39' W. 67.08 feet;
thence S. 0° - 05' W. 110.00 feet;
thence S. 26° - 39' W. 840.00 feet;
thence N. 63° - 21' W. 87.05 feet;
thence N. 35° - 40' W. 205.00 feet;
thence N. 29° - 21' W. 177.06 feet;
thence N. 29° - 21' W. 100.00 feet;
thence S. 60° - 39' W. 60.00 feet;
thence N. 29° - 21' W. 25.00 feet;
thence N. 58° - 16' W. 80.27 feet;
thence N. 66° - 12' W. 68.07 feet;
thence N. 71° - 38' W. 300.00 feet;
thence N. 52° - 57' W. 26.07 feet;
thence N. 83° - 36' W. 95.07 feet;
thence S. 61° - 50' W. 95.07 feet;
thence S. 27° - 16' W. 95.07 feet;
thence S. 7° - 18' E. 95.07 feet;
thence S. 41° - 52' E. 95.07 feet;
thence S. 84° - 56' E. 13.99 feet;
thence S. 29° - 21' E. 49.73 feet;
thence S. 60° - 35' W. 50.00 feet;
thence S. 81° - 00' W. 70.78 feet;
thence S. 62° - 55' W. 80.94 feet;
thence S. 23° - 45' W. 108.24 feet;
thence S. 15° - 47' E. 108.24 feet;
thence N. 85° - 08' E. 108.24 feet;
thence S. 62° - 55' W. 108.24 feet;
(Continued @ upper right)

thence N. 41° - 57' E. 68.10 feet;
thence N. 47° - 13' E. 75.83 feet;
thence N. 37° - 08' E. 75.83 feet;
thence S. 52° - 30' E. 74.67 feet;
thence S. 62° - 59' E. 66.70 feet;
thence S. 63° - 21' E. 720.00 feet;
thence S. 63° - 53' E. 63.20 feet;
thence S. 63° - 21' W. 20.00 feet;
thence S. 29° - 29' W. 6.00 feet;
thence N. 58° - 49' W. 60.20 feet;
thence N. 63° - 21' W. 123.73 feet;
thence N. 70° - 38' W. 75.99 feet;
thence N. 74° - 21' W. 360.00 feet;
thence N. 56° - 25' W. 63.73 feet;
thence N. 65° - 41' W. 65.25 feet;
thence S. 41° - 34' W. 108.35 feet;
thence S. 11° - 59' W. 108.35 feet;
thence S. 37° - 36' E. 108.35 feet;
thence S. 76° - 47' E. 80.52 feet;
thence N. 88° - 10' E. 65.26 feet;
thence S. 74° - 21' E. 360.00 feet;
thence S. 63° - 11' E. 55.53 feet;
thence S. 63° - 21' E. 104.00 feet;
thence N. 75° - 08' E. 26.71 feet;
thence S. 26° - 39' W. 90.00 feet;
thence S. 62° - 02' W. 62.03 feet;
thence S. 62° - 44' E. 95.00 feet;
thence S. 63° - 35' E. 150.52 feet;
thence S. 63° - 35' E. 150.52 feet;
at the point of beginning, containing 28.49 acres, more or less.



Iron pipe monuments have been placed at all street intersections, centerline points of curvature, centerline points of tangency, and at all other points required by the City of Lincoln Land Subdivision Ordinance, Title 28 of the Lincoln Municipal Code, except temporary monuments have been placed at all lot corners.

All dimensions are chord measurements unless shown otherwise, and are in feet or decimals of a foot.

Signed this 27th day of November, 1978.


L. L. Loth, L.S. 314

A P P R O V A L

The foregoing plat was approved by the Lincoln City-Lancaster County Planning Commission on this 17th day of January, 1979.

ATTEST:  Robert J. Copley
City Clerk

A C C E P T A N C E

The foregoing plat and dedication was approved and accepted by the City Council of the City of Lincoln, Nebraska, by Ordinance No. 12631, passed the 27th day of July, 1978.

ATTEST:  Paul G. Moberg
City Clerk

INDEXED
A-13
MICRO-FILED #1951
GENERAL

INST. NO. 79-18681