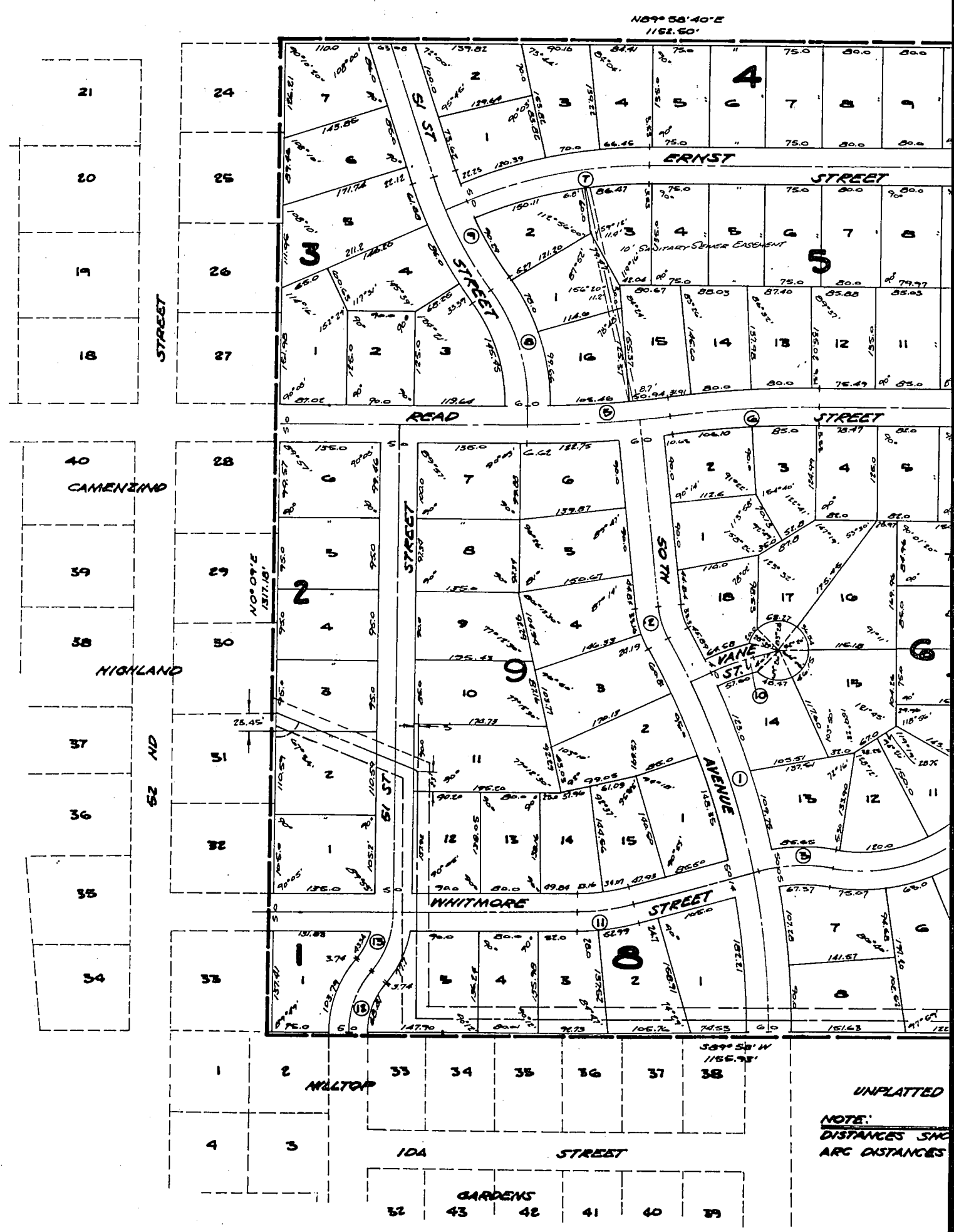


CAMENZIND HIGHLAND 2

LOT 1, BLOCK 1; LOTS 1 THRU 6, INCLUSIVE, BLOCK 2; LOTS 1 THRU THRU 10, INCLUSIVE, BLOCK 4; LOTS 1 THRU 16, INCLUSIVE, BLOCK 5; BLOCK 6; LOTS 1 THRU 8, INCLUSIVE, BLOCK 7; LOTS 1 THRU THRU 15, INCLUSIVE, BLOCK 9; AND LOTS 1 THRU 9, INCLUSIVE, BLOCK 10; BEING A PLATTING OF PART OF THE SW 1/4 OF THE RISE, OF THE 6TH P.M., DOUGLAS COUNTY, NEBRASKA.

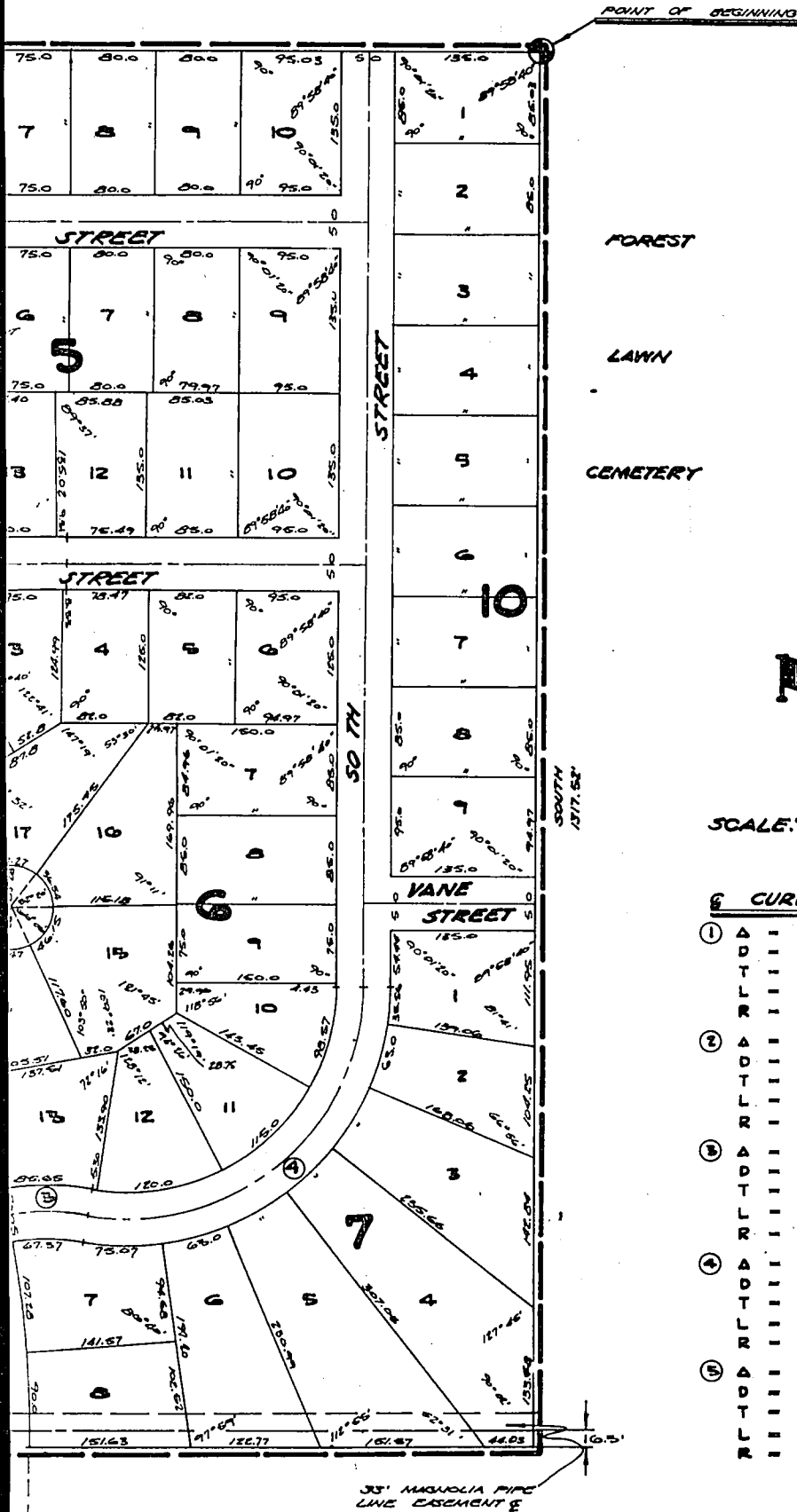
UNPLATTED



D 2ND ADDITION

LOTS 1 THRU 7, INCLUSIVE, BLOCK 3; LOTS 1 THRU 9, INCLUSIVE, BLOCK 5; LOTS 1 THRU 18, INCLUSIVE, BLOCK 6; LOTS 1 THRU 5, INCLUSIVE, BLOCK 8; LOTS 1 THRU 9, INCLUSIVE, BLOCK 10.

1/4 OF THE SE 1/4 OF SECTION 30, T16N, R10E, NEBRASKA.



SCALE: 1" = 100'

CURVE DATA


① Δ = 29°00'	⑥ Δ = 7°47'10"	⑪ Δ = 15°46'
D = 52565	D = 39818365	D = 21275036
T = 281.67	T = 99.15	T = 37.29
L = 551.70	L = 198.05	L = 74.11
R = 10900	R = 1457.22	R = 269.51
② Δ = 22°58'	⑦ Δ = 23°12'20"	⑫ Δ = 40°05'
D = 50672857	D = 9406015	D = 46446
T = 22.97	T = 125.07	T = 45.0
L = 45.35	L = 246.71	L = 86.50
R = 113.07	R = 609.14	R = 123.56
③ Δ = 25°00'	⑧ Δ = 36°06'40"	⑬ Δ = 39°50'40"
D = 24969842	D = 21970933	D = 46146746
T = 50.87	T = 85.0	T = 45.0
L = 100.12	L = 164.56	L = 86.54
R = 229.46	R = 260.75	R = 124.16
④ Δ = 9°28'	⑨ Δ = 17°53'40"	
D = 26.00807	D = 10.409469	
T = 289.84	T = 86.65	
L = 382.25	L = 171.91	
R = 220.50	R = 530.42	
⑤ Δ = 8°00'	⑩ Δ = 10°00'	
D = 4.2129	D = 16.5702	
T = 95.10	T = 30.62	
L = 189.89	L = 61.09	
R = 1560.0	R = 350.0	

NOTE: DISTANCES SHOWN ON CURVES ARE ARC DISTANCES NOT CHORD DISTANCES

SURVEYOR'S CERTIFICATE

I HEREBY CERTIFY that I have accurately surveyed and staked with iron pipe, all corners of all lots, steets, angle points and ends of all curves in CAMENZIND HIGHLAND SECOND ADDITION, Lot 1, Block 1; Lots 1 thru 6, inclusive, Block 2; Lots 1 thru 7, inclusive, Block 3; Lots 1 thru 10, inclusive, Block 4; Lots 1 thru 16, inclusive, Block 5; Lots 1 thru 18, inclusive, Block 6; Lots 1 thru 8, inclusive, Block 7; Lots 1 thru 5, inclusive, Block 8; Lots 1 thru 15, inclusive, Block 9; and Lots 1 thru 9, inclusive; Block 10; Being a platting of part of the SW $\frac{1}{4}$ of the SE $\frac{1}{4}$ of section 30, T16N, R13E, of the 6th P.M., Douglas County, Nebraska, to-wit: Beginning at the center of the Southeast $\frac{1}{4}$ of said section 30, T16N, R13E, thence South, 1317.52 feet; thence S89°58'W, 1155.93 feet; thence N 00° 09' E, 1317.18 feet; thence N 89°58'40" E, 1152.50 feet to the point of beginning.

July 5, 1963
Date

Ivan O. Rold
Ivan O. Rold, Land Surveyor, No. 99


DEDICATION

KNOW ALL MEN BY THESE PRESENTS: That we, Mary Camenzind, Louis Camenzind, John K. Camenzind, Carl Holmquist, and Joseph P. Inserra, being the sole owners of the property described within the Surveyor's Certificate and embraced within this plat, have caused said land to be subdivided into lots and streets, to be numbered and named as shown; Said addition to be hereafter known as CAMENZIND HIGHLAND SECOND ADDITION, and we do hereby ratify and approve of the disposition of our property as shown on this plat; and we do hereby dedicate to the public, for public use, the streets ^{and easements} as shown on this plat. We do further grant a perpetual license in favor of and granted to the Omaha Public Power District and the Northwestern Bell Telephone Company, their successors and assigns, to erect and operate, maintain, repair and renew poles with the necessary supports, sustaining wires, cross-arms, guys and anchors, and other instrumentalities, and to extend thereon wires for the carrying and transmission of electric current for light, heat, and power, and for all telephone and telegraph and message service over, upon or under a 5-foot strip of land adjoining the rear and side boundary lines of said lots (these easements apply only to land within said addition); said license being granted for use and benefit of all present and future owners of lots in said Addition; PROVIDED, however, that said side lot line easement is granted upon the specific condition that if both said utility companies fail to remove without replacement within 60 days after their removal, then this side lot line easement shall automatically terminate and become void as to such unused or abandoned easement ways.

Mary Camenzind
Mary Camenzind
Louis Camenzind
Louis Camenzind
John K. Camenzind
John K. Camenzind

Carl Holmquist
Carl Holmquist
Joseph P. Inserra
Joseph P. Inserra

ACKNOWLEDGMENT OF NOTARY

State of Nebraska)
) ss
County of Douglas) On this 5th day of July, 1963, before me, a Notary Public, duly commissioned and qualified in and for said County, appeared Mary Camenzind, Louis Camenzind, John K. Camenzind, Carl Holmquist, and Joseph P. Inserra, who are personally known by me to be the sole owners of the property described in the Surveyor's Certificate of this plat, and they did acknowledge their execution of the foregoing Dedication to be their voluntary act and deed.

Witness my hand and official seal, in Douglas County, Nebraska, the date last aforesaid.

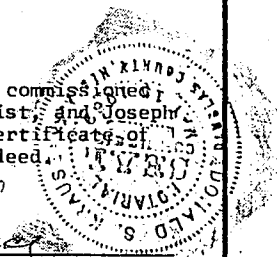

My Commission expires the 15th day of May, 1969.
Donald S. Schauer
Notary Public

COUNTY TREASURER'S CERTIFICATE

This is to certify that I find no regular or special taxes, due or delinquent, against the property described in the Surveyor's Certificate and embraced in this plat, as shown by the records of this office, this 5th day of July, 1963.

[Signature]
Deputy

[Signature]
Treasurer

APPROVAL OF CITY ENGINEER

I hereby approve the plat of CAMENZIND HIGHLAND SECOND ADDITION on this 11TH day of September, 1963.

George B. [Signature]
City Engineer

APPROVAL OF CITY PLANNING BOARD

This plat of CAMENZIND HIGHLAND SECOND ADDITION was approved by the City Planning Board of the City of Omaha on this 11TH day of SEPTEMBER, 1963.

Wallace Hopkins
Chairman, City Planning Board

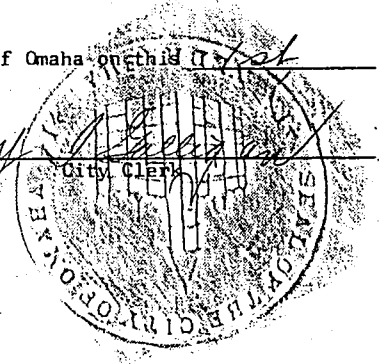
APPROVAL OF OMAHA CITY COUNCIL

This plat of CAMENZIND HIGHLAND SECOND ADDITION was approved and accepted by the City Council of Omaha on this 11TH day of October, 1963.

[Signature]
Acting Mayor

[Signature]
President


[Signature]
City Clerk



[Signature]
DOUGLAS COUNTY
SURVEYOR'S OFFICE

5. PLAT RECORDED IN REGISTER OF DEEDS OFFICE IN DOUGLAS COUNTY, NEBRASKA
7. DAY OF October, 1963 AT 2:14 P.M. THOMAS L. OGDON, REGISTER OF DEEDS 31.75

BLOCK 1199 PAGE 206

 LAMP, RYNEARSON & ASSOCIATES CONSULTING ENGINEERS - LAND SURVEYORS	SCALE IS SHOWN	<u>CAMENZIND HIGHLAND 2ND ADDITION</u>
	PRL JUNE, 1963	
		62-14