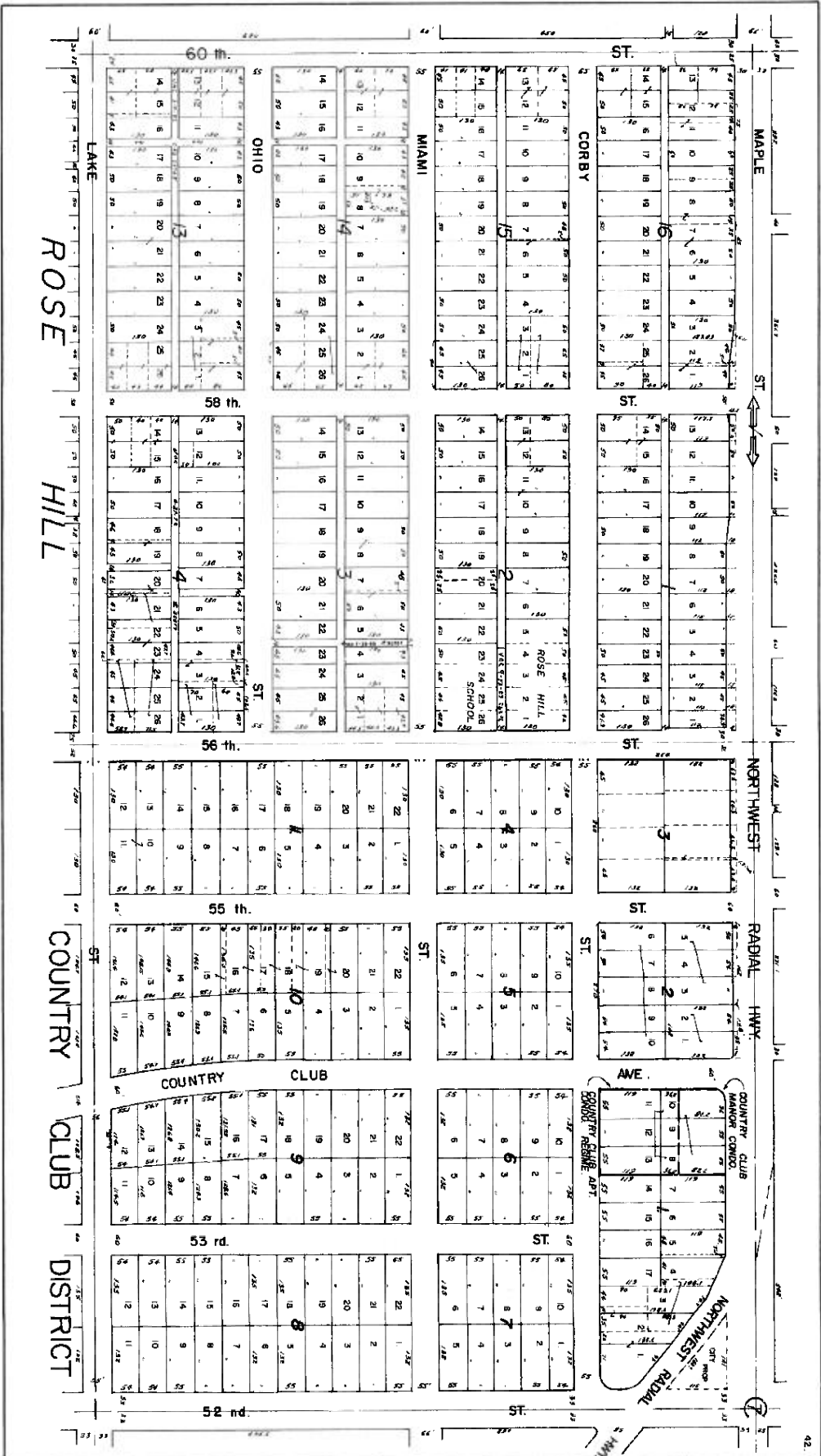


557



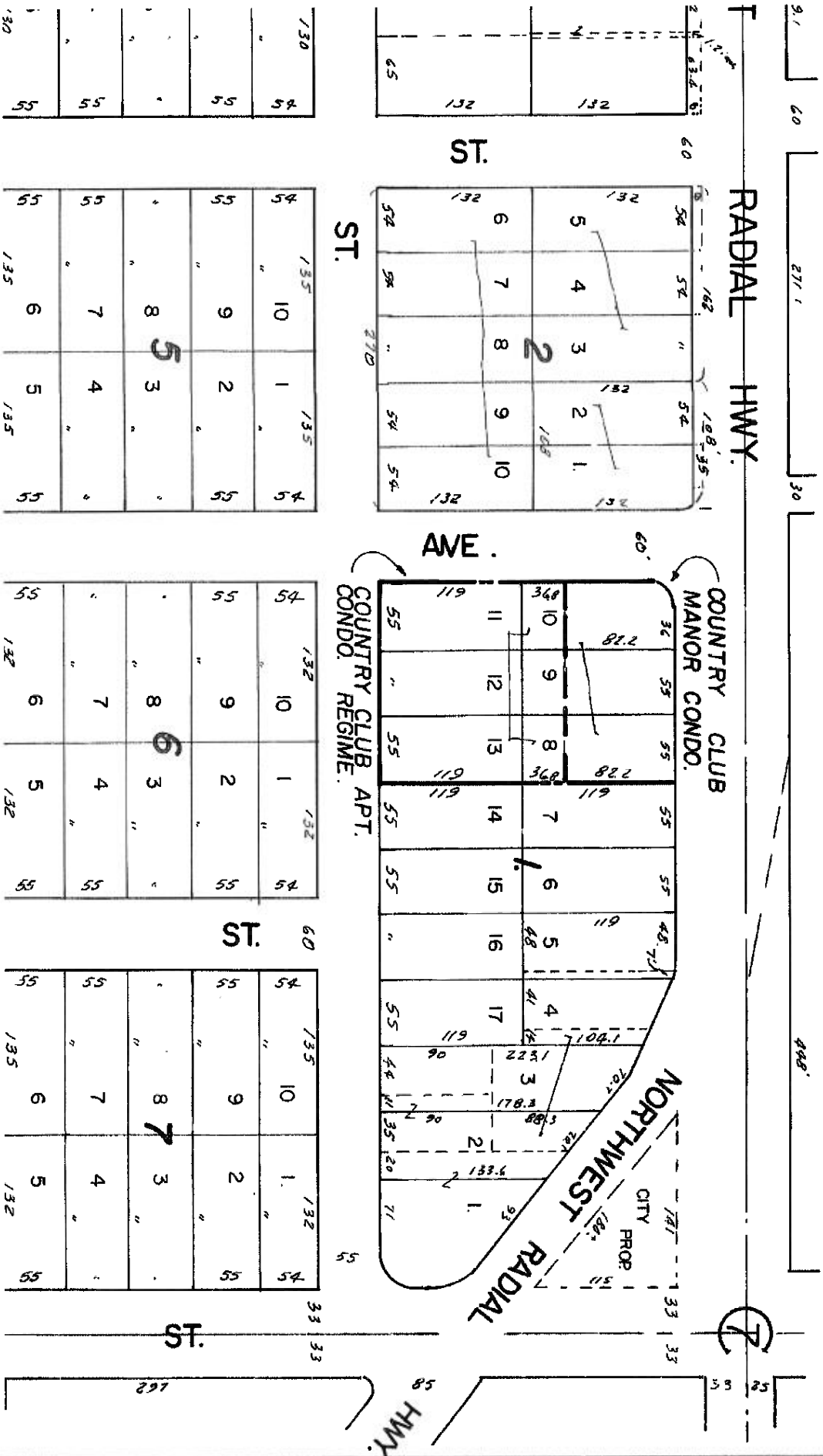
448

446

444

N 1/2 SW 1/4 SEC. 7-15-13

445



130	54
"	54
"	55
"	55

135	10	1	135	54
"	"	"	"	"
54	9	2	"	54
"	"	"	"	"
"	8	5	3	"
"	"	"	"	"
55	7	4	"	"
"	"	"	"	"
55	6	5	135	55

54	10	1	132	54
"	"	"	"	"
55	9	2	"	55
"	"	"	"	"
"	8	6	3	"
"	"	"	"	"
55	7	4	"	55
"	"	"	"	"
55	6	5	132	55

54	10	1	132	54
"	"	"	"	"
55	9	2	"	55
"	"	"	"	"
"	8	7	3	"
"	"	"	"	"
55	7	4	"	"
"	"	"	"	"
55	6	5	132	55