

REPLAT OF
COUNTRY ACRES ADDITION

SCALE 1" = 100'

JUANE E. FUNK
REG. ENGR.

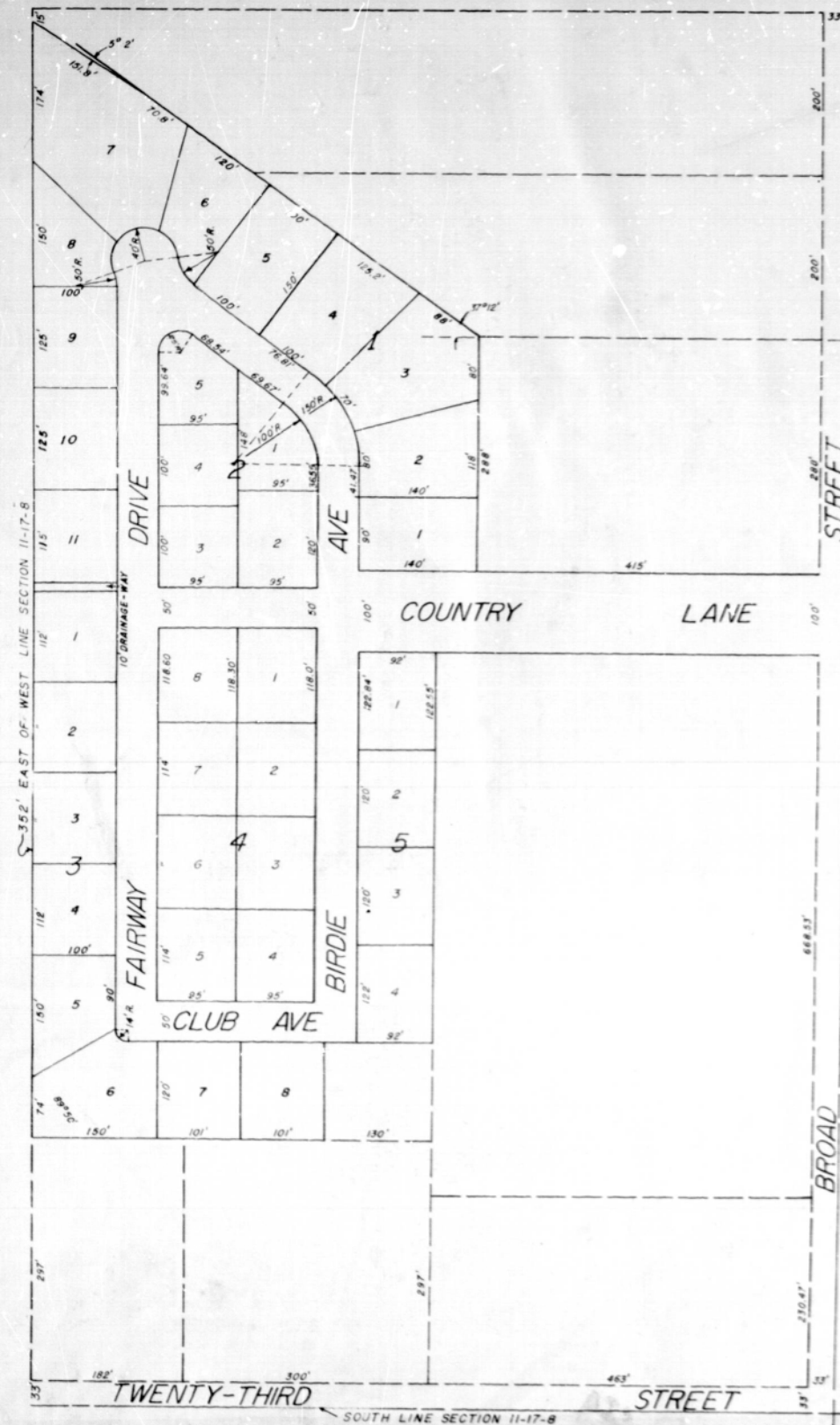
STATE OF NEBRASKA
DODGE COUNTY
Filed for record on this 16 day of
Jan A. D. 1950, at 11:30
o'clock P. M. and recorded in Book
of Maps page 151
R
Betty A. Rouch
Register of Deeds

By _____ Deputy
For _____

INDEXED
GRANTED
REGISTERED
COMPARSED
PAGED

N

N.E. CORNER OF THE SW 1/4 -
SW 1/4 SEC. 11-17-8



SOUTH LINE SECTION 11-17-8