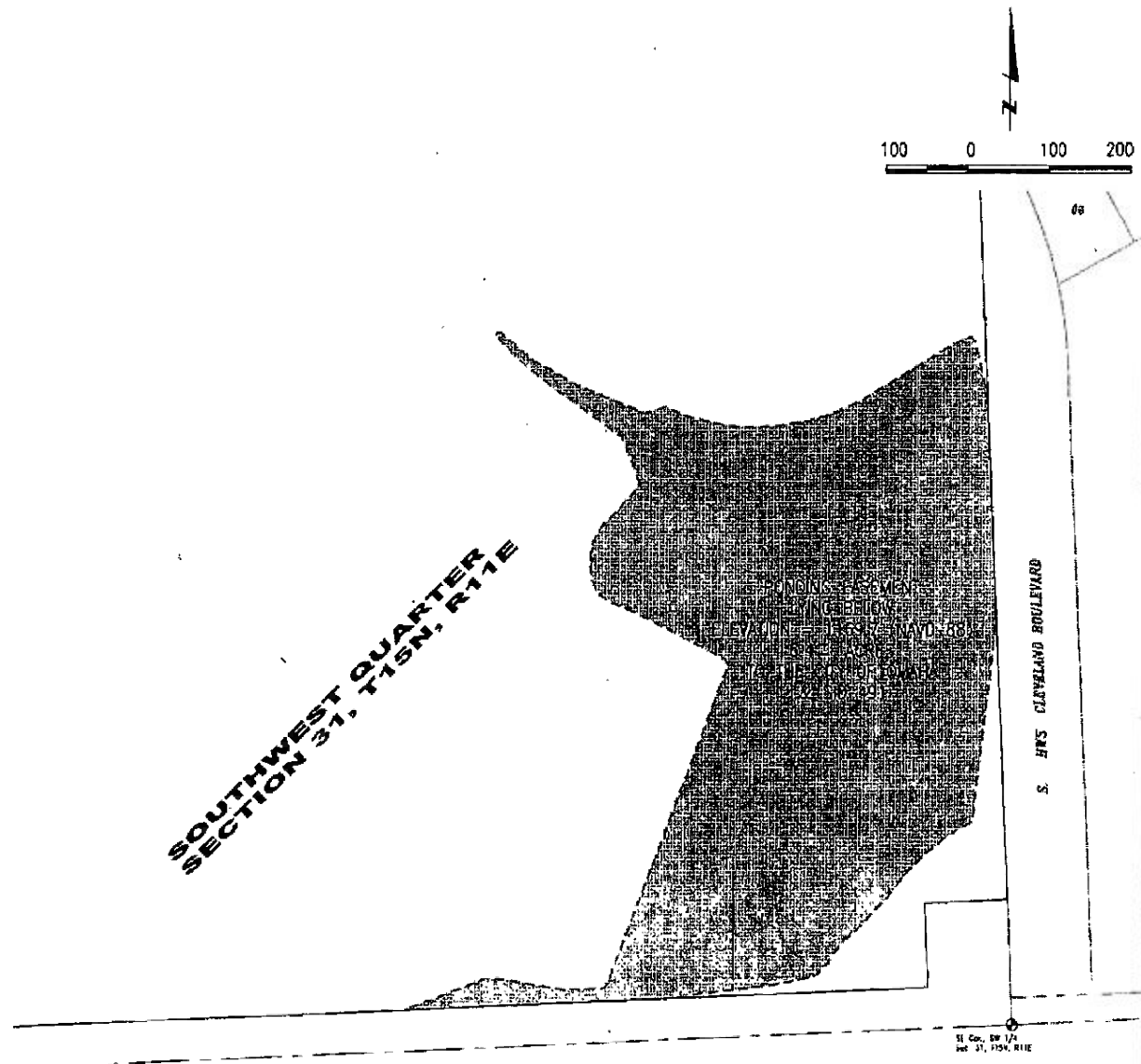


LEGAL DESCRIPTION

A permanent ponding easement over that part of Southwest Quarter, Section 31, Township 15 North, Range 11 East of the 6th P.M. in Douglas County, Nebraska, lying below elevation 1169.7 feet as referenced to North American Vertical Datum (NAVD) of 1988. Contains 6.4 acres more or less.



C:\DWG\0240E106.dwg - 10/21/03 10:39:51 AM - Lamp, Rynearson & Associates, Inc.

02040\DWG\EASEMENT\dwg\0240E106.dwg
 Book 02040 Page _____ Date Oct. 15, 2003 Dwn.By JHVD Job Number 02040.11 / 340

Lamp, Rynearson & Associates, Inc.
 14710 West Dodge Road, Suite 100
 Omaha, Nebraska 68154-2027

WWW.LRA-INC.COM
 (Ph) 402.496.2498
 (Fax) 402.496.2730