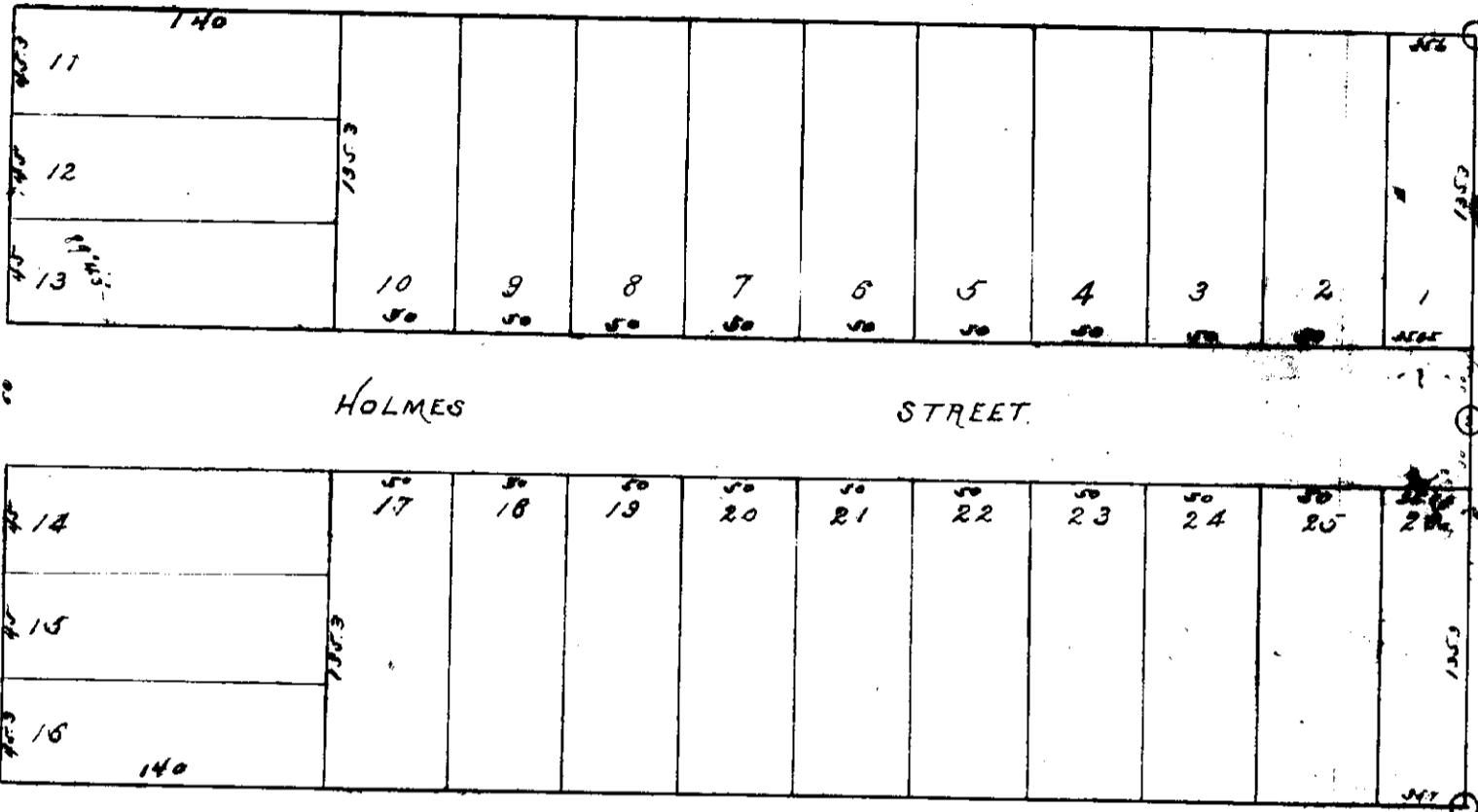


NUMERICAL INDEX, LANCASTER COUNTY  
 BLOCK NO. CITY OF LINCOLN

W.W.HOLMES'  
 SUBDIVISION.

Scale 1 inch = 80 feet



LEGEND

The foregoing plat shows the subdivision of Lot 11 in the North West quarter of Section 36 T.10 R.6 E of the 6<sup>th</sup> P.M. The dimensions of all lots are marked in feet & decimals in red figures on the plat. Holmes Street is 60 feet wide. 33 feet is left on West end of Lot 11 for half of Seventeenth Street. Stones are set at points marked thus. ○ Oak stakes are set at all lot corners. Dec 16<sup>th</sup> 1884.

J.P. Matton  
 Co. Surveyor

The foregoing Subdivision of the N<sup>1</sup>/<sub>2</sub> S.W<sup>1</sup>/<sub>4</sub> N.E<sup>1</sup>/<sub>4</sub> N.W<sup>1</sup>/<sub>4</sub> of Sec. 36 T.10 R.6 E of 6<sup>th</sup> P.M. otherwise known as Lot 11 in the N.W<sup>1</sup>/<sub>4</sub> of said Sec 36. is with the free consent & in accordance with the desire of the undersigned owners & proprietors.

Signed this 4<sup>th</sup> day of May 1885  
 In presence of  
 Chas. L. Hall

The State of Nebraska) On this 4<sup>th</sup> day of May 1885 before me the subscriber a Notary Public duly commissioned & qualified for and residing in said County personally came W.W. Holmes & Emma H. Holmes to me known to be the identical persons who executed the foregoing instrument & acknowledged the same to be their voluntary act & deed.

Witness my hand & Notary seal at Lincoln in said County the day & year last above written  
 Chas. L. Hall  
 Notary Public

THE STATE OF NEBRASKA

LANCASTER COUNTY

Butler  
 Clerk's Office  
 4<sup>th</sup> May - 1885  
 25  
 Book  
 at  
 page

J.H. McCreary  
 County Clerk

By J. McCluskey  
 Deputy

100 p<sup>ts</sup>