

**139 COMPARED**

R Fee 5.00  
 A Fee \_\_\_\_\_  
 T Tax \_\_\_\_\_

Polk County, IA 2008-008597  
 Record Book Page: 2008-008597  
 File Time: 06/16/2008 @ 10:17:52 AM  
 Rec-\$5.00 Aud-\$0.00 PMA-\$1.00 ECM-\$1.00  
 Current Transfer Tax Paid: \$0.00



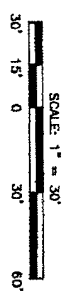
JUN 16 2008

PREPARED BY: CARL H. ROGERS, JR. PHONE: (712) 366-9009  
 1689 ROLLING HILLS LOOP, COUNCIL BLUFFS, IOWA 51503

**PLAT OF SURVEY**

OR THE SOUTH 1/2 OF LOTS 5 AND 6 IN BLOCK 32 IN EVERETT'S ADDITION TO THE CITY OF COUNCIL BLUFFS, POLK COUNTY, IOWA.

NOTE: THIS DOCUMENT HAS BEEN REDUCED.

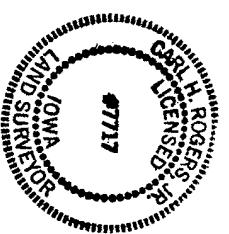
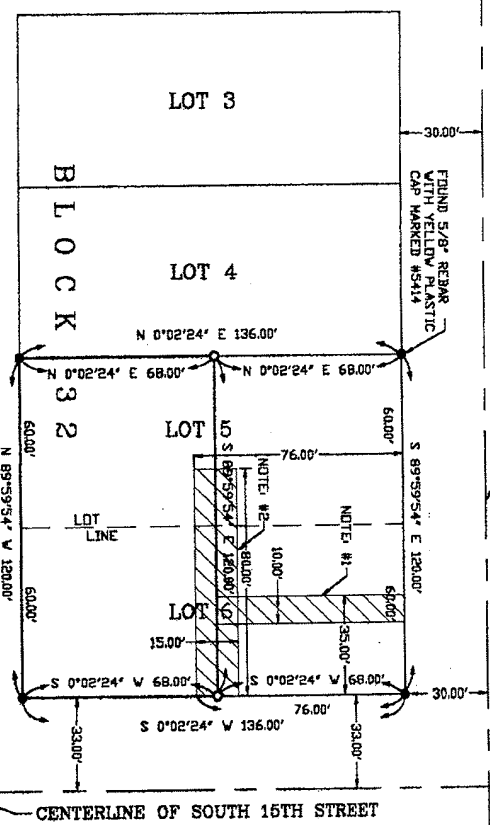


- LEGEND:
- - SET 5/8" REBAR WITH ALUMINUM CAP MARKED E.L.S. #7717
  - - FOUND 5/8" REBAR WITH BRASS PLASTIC CAP MARKED #9780, UNLESS OTHERWISE DESCRIBED

**LEGAL DESCRIPTION:**

THE SOUTH 1/2 OF LOTS 5 AND 6 IN BLOCK 32 IN EVERETT'S ADDITION TO THE CITY OF COUNCIL BLUFFS, POLK COUNTY, IOWA.  
 SUBJECT TO EASEMENTS, RESTRICTIONS AND COVENANTS OF RECORD, AND SUBSEQUENT SPECIAL ASSESSMENTS, IF ANY.

- NOTE #1:  
 SEE BOOK 2007, PAGE 01668 IN THE POLK COUNTY RECORDER'S OFFICE FOR A 1000 FOOT WIDE EASEMENT FOR SANITARY SEWER.
- NOTE #2:  
 SEE PAGE 0723 IN THE POLK COUNTY RECORDER'S OFFICE FOR A MIDAMERICAN ENERGY COMPANY ELECTRIC OVERHEAD EASEMENT.



I HEREBY CERTIFY THAT THIS LAND SURVEYING DOCUMENT WAS PREPARED AND THE RELATED SURVEY WORK WAS PERFORMED BY ME OR UNDER MY DIRECT PERSONAL SUPERVISION AND THAT I AM A DULY LICENSED LAND SURVEYOR UNDER THE LAWS OF THE STATE OF IOWA.

*Carl H. Rogers, Jr.*  
 CARL H. ROGERS, JR.  
 DATE: June 12, 2008

LICENSE NUMBER: 7717  
 MY LICENSE RENEWAL DATE IS DECEMBER 31, 2008.  
 NUMBER OF SHEETS COVERED BY THIS SEAL: SHEET 1 OF 1

**ROGERS SURVEYING**

1689 ROLLING HILLS LOOP COUNCIL BLUFFS, IOWA  
 SCALE: 1" = 30'  
 PHONE: (712) 366-9009  
 DATE: 6-16-2008  
 DRAWN BY: S.A.R.  
 REVISIONS:

TITLE: THE SOUTH 1/2 OF LOTS 5 AND 6 IN BLOCK 32 IN EVERETT'S ADDITION TO THE CITY OF COUNCIL BLUFFS, POLK COUNTY, IOWA.

CLIENT: TODD COOK  
 635 WEST BROADWAY  
 COUNCIL BLUFFS, IOWA 51503  
 SHEET 1 OF 1