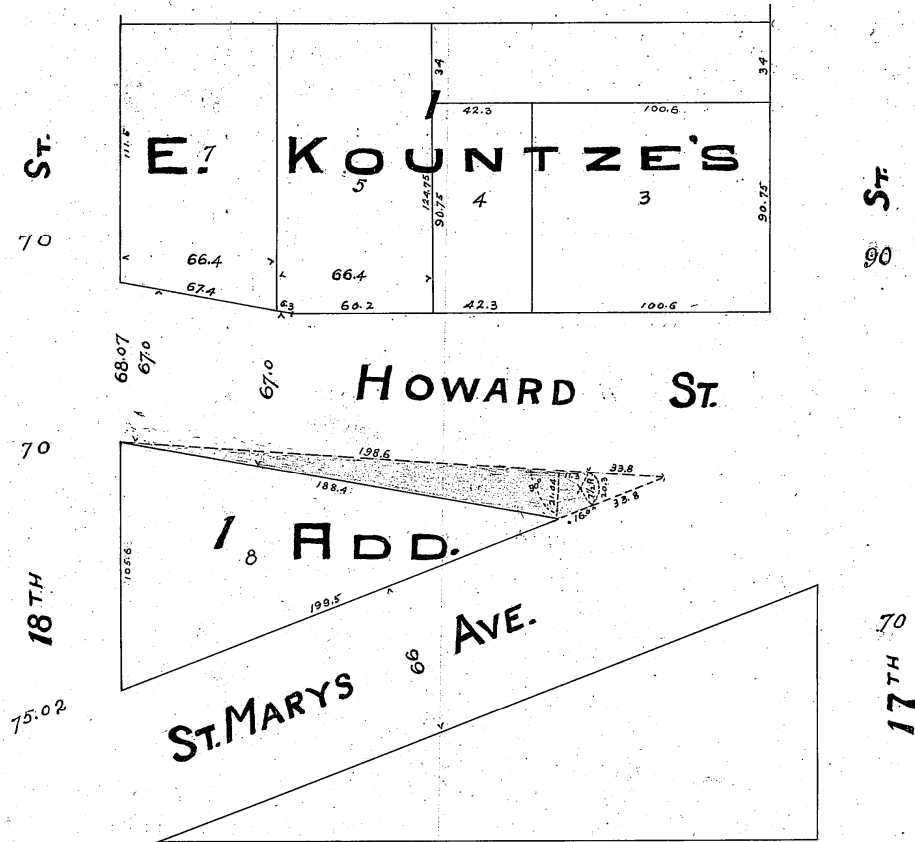


MISCELLANEOUS RECORD, No. 53

12.

Narrowing of Howard St. bet. 17th St. & 18th St.



Description:-

That part of Howard St. described as follows:-

Beginning at the Northwest corner of Lot 8 Block 1, E.Kountze's Add., thence South easterly along the North line of said Lot, 188.4' to N.L. of St. Marys Ave. Thence in a northeasterly direction along the North line of St. Marys Ave produced 16.0' thence on a curve to the left whose radius is 7.5' with an external angle of 155° 0' a distance of 20.3', thence west 198.6' to place of beginning.

I, hereby certify that this plat is a true copy of records on file in this office.

Herman Beal.

City Engineer.

Ord. NO. 11095. Aug. 16, 1921.

Department of Public Improvements - Omaha.

Office of City Engineer.

Narrowing of Howard St. bet. 17th St. & 18th St.

Made by N. M.	Scale 1"=50'	Date, Aug. 25, 1921.
Checked by A.F.J.		Dr'w'g. No. 10238.

MISCELLANEOUS RECORD, No. 53

18314-MFG. BY OMAHA PRINTING CO., OMAHA

State of Nebraska,)
) ss
County of Douglas.)

Entered on numerical index and filed for record
in the Register of Deeds office of said County, the
29th day of August A.D. 1921, at 4:00 o'clock, P.M.

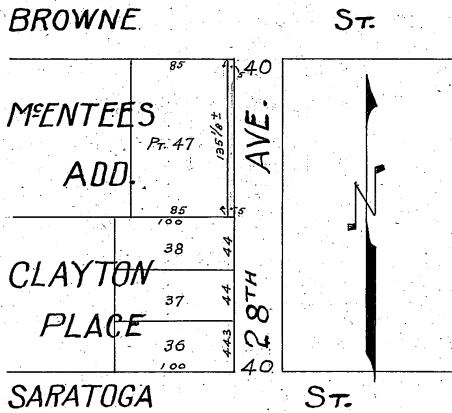
Harry Pearce,

Register of Deeds.

Compared by. W&P.

5.

Vacating West 5 ft. of 28th Ave. from Browne St. to No. line of Clayton Pl.



I, hereby certify that this plat is a true copy of records on file in this office.

Herman Beal,

City Engineer.

Ord. No. 11096. August 16th 1921.

Department of Public Improvements- Omaha, Office of City Engineer.		
Vacating West 5 ft. of 28th Ave from Browne St. to No. line of Clayton Pl.		
Made by N.R.M.	Scale 1"=100'	Date Dec. 20, 1920.
Checked by H.E.C.		Drwg. No. 109183.

State of Nebraska,)
) ss
County of Douglas,)

Entered on numerical index and filed for record
in the Register of Deeds Office of said County, the
30th day of August, A.D. 1921, at 4:30 O'clock, P.M.

Harry Pearce,

Register of Deeds.

Compared by. W&P.
