

NUMERICAL INDEX, LANCASTER COUNTY
BLOCK NO. _____ CITY OF LINCOLN

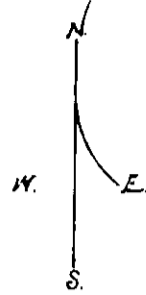
HOUTZ AND BALDWIN'S

SUBDIVISION

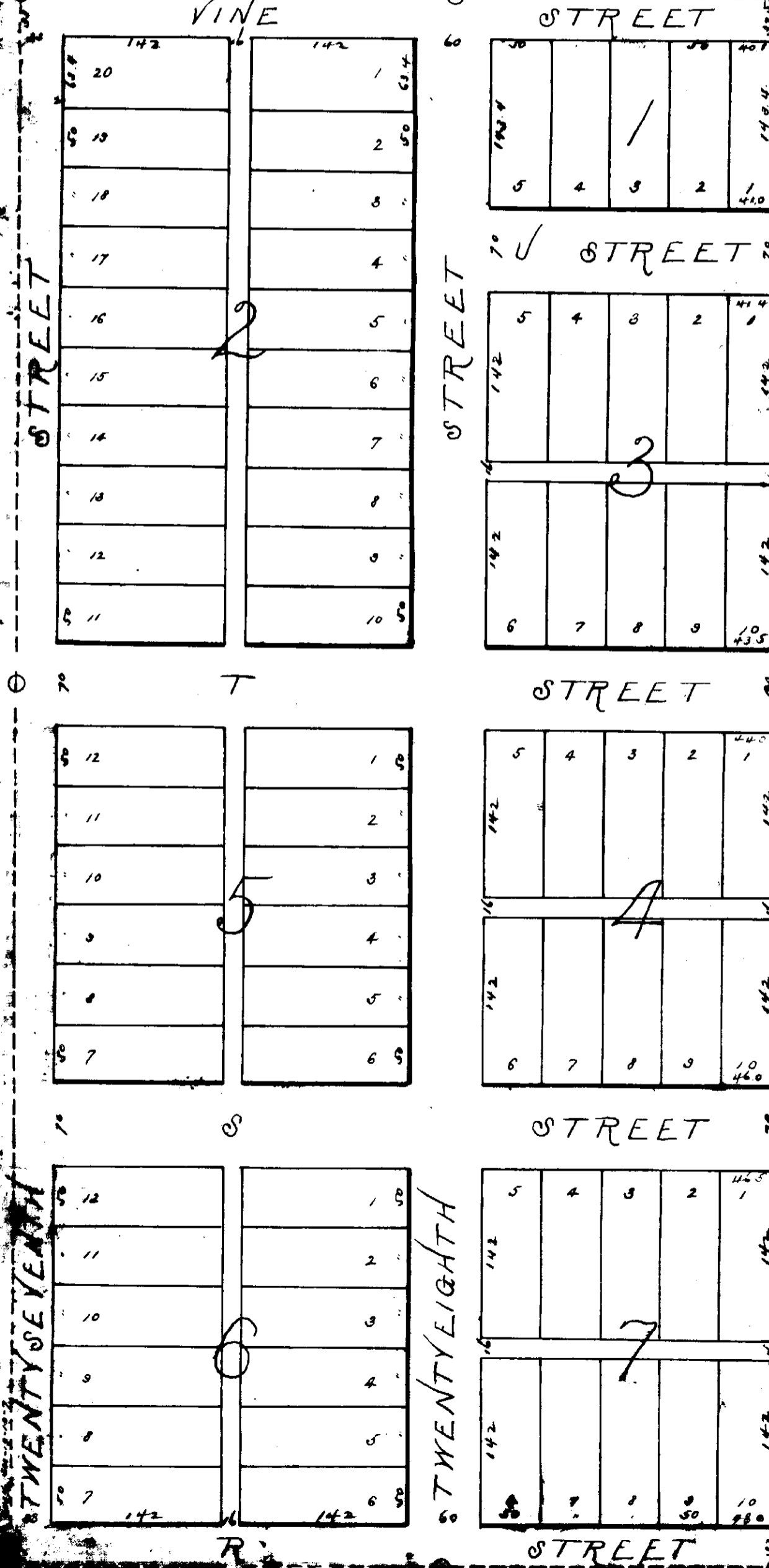
of 15 June 10
THE W 1/2 NW 1/4 SW 1/4 OF SECTION 19 T. 10 N. R. 7 E.
IN

LANCASTER CO. NEB.

J. H. McElroy
100 St. Deputy



Scale = 100 feet = one inch.
PLAT. 677. NW 1/4 SW 1/4 Sec. 19-10-7



LEGEND.

HOUTZ & BALDWIN'S SUBDIVISION comprises the W 1/2 NW 1/4 SW 1/4 of section 19, T. 10, N. R. 7 E. of the 6th P.M.
All streets and alleys are parallel with or at right angles to the west line of said sec. 19.
S.T. streets are each 70 feet wide. Twentyeighth street is 60 feet wide. Twentyseventh & Vine streets have dimensions as marked in red figures on the plat.
All alleys are 16 feet wide.
All lots are 50 feet by 142 feet, except the lots on the North & East boundaries, which have dimensions as indicated in feet & decimals in red figures on the plat.
Oak stakes are driven at the lot corners on the block lines.
Stones are planted at the points marked thus o
Measurements were made with a steel tape.
June 4th 1885. J. P. Walton
County Surveyor

The foregoing subdivision of the W 1/2 NW 1/4 SW 1/4 of section 19, T. 10, N. R. 7 E. of the 6th P.M. as appears on this plat is with the free consent and in accordance with the desire of the undersigned owners and proprietors.
Signed this 10th day of June A.D. 1885.
In presence of } J. H. Houtz
M. Baldwin } Wm. K. Houtz,
L. G. M. Baldwin
Anna M. Baldwin

The State of Nebraska, ss On this 10th day of June A.D. 1885, before me W. D. Burris a Notary Public duly commissioned and qualified for and residing in said County, personally came J. E. HOUTZ & URA K. HOUTZ, L. G. M. BALDWIN & ANNA M. BALDWIN, to me known to be the identical persons who executed the foregoing plat and acknowledged the said instrument to be their voluntary act and deed.
Witness my hand and Notarial Seal in said County the day and year last above written.
W. D. Burris
Notary Public.