

EASEMENT EXHIBIT

LEGAL DESCRIPTION

A PERMANENT EASEMENT FOR THE CONSTRUCTION AND MAINTENANCE OF WATER LINES AND RELATED FACILITIES OVER THAT PART OF LOT 1, SCHEWE FARMS REPLAT 1, A SUBDIVISION, AS SURVEYED, PLATTED AND RECORDED IN SARPY COUNTY, NEBRASKA, DESCRIBED AS FOLLOWS

BEGINNING AT THE SOUTHWEST CORNER OF SAID LOT 1

THENCE NORTH 02°23'05" WEST (BEARING REFERENCED TO THE FINAL PLAT OF SCHEWE FARMS REPLAT 1) FOR 98.51 FEET ALONG THE WEST LINE OF SAID LOT 1;

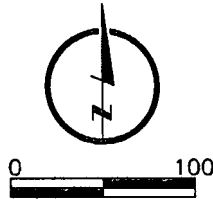
THENCE SOUTH 53°19'23" EAST FOR 6.81 FEET,

THENCE SOUTH 07°08'03" EAST FOR 94.60 FEET TO THE SOUTH LINE OF SAID LOT 1

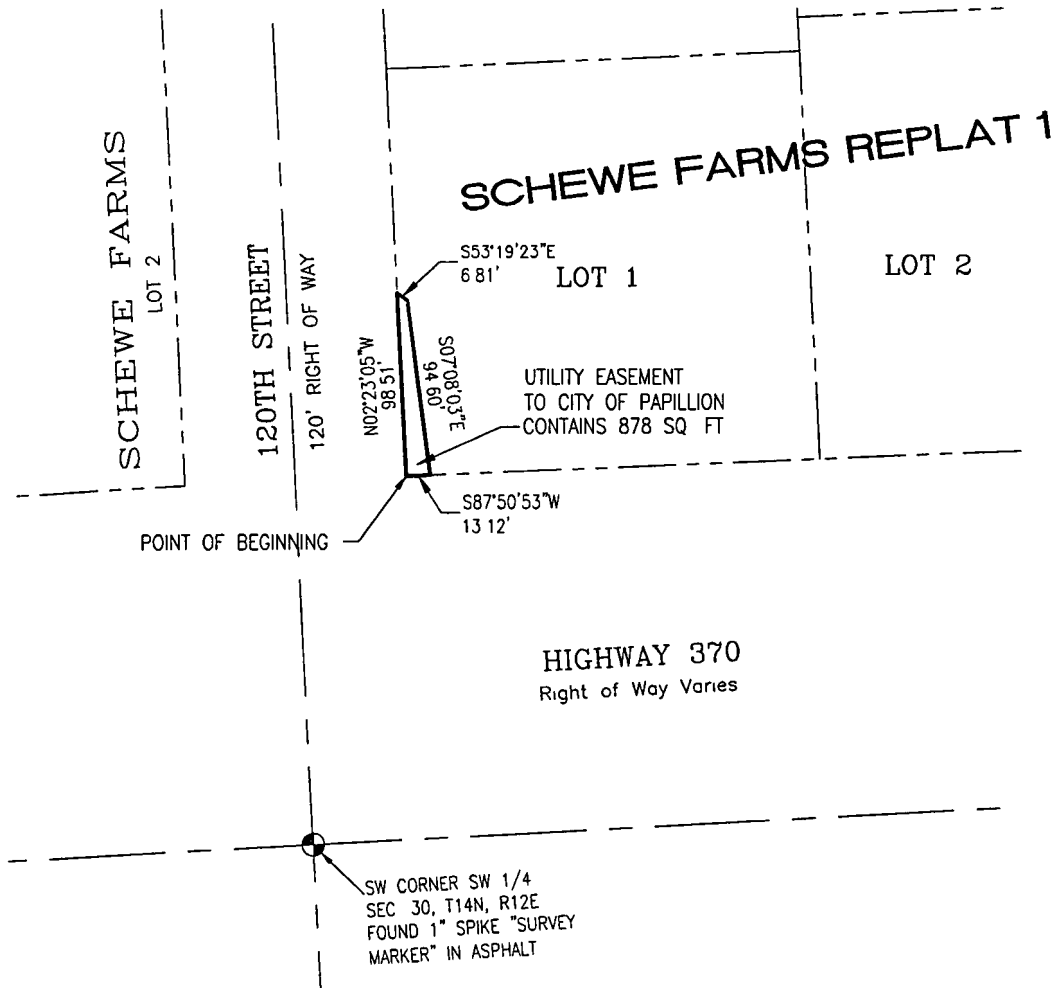
THENCE SOUTH 87°50'53" WEST FOR 13.12 FEET TO THE POINT OF BEGINNING.

CONTAINS 878 SQUARE FEET

LEGEND



- SECTION LINE
- ⊕ SECTION CORNER
- LOT LINE
- ===== EASEMENT LINE



LAMP RYNEARSON & ASSOCIATES

14710 West Dodge Road, Suite 100 402.496.2498 | P
Omaha, Nebraska 68154-2027 402.496.2730 | F
www.LRA-Inc.com

drawn by	designed by	reviewed by	project - task number	date	book and page	revisions
EAM		MRT	0109050 02-005	8-11-2014		

path\filename L:\Engineering\0109050\SURVEY\DRAWINGS\RECORD\09050E_R101_UTIL.dwg