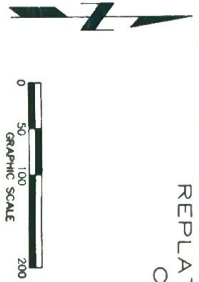


**"FINAL PLAT"
COUNTRY CLUB HEIGHTS SECOND ADDITION
REPLAT OF LOTS 1 THRU 14 INCLUSIVE, BLOCK 2
COUNTRY CLUB HEIGHTS FIRST ADDITION
SEWARD, NEBRASKA**



PERIMETER DESCRIPTION: BLOCK 2, COUNTRY CLUB HEIGHTS FIRST ADDITION AS PLATTED IN THE CITY OF SEWARD, NEBRASKA, BEING MORE PARTICULARLY DESCRIBED AS THE SOUTH LINE OF SAID LOT 1, SAID LINE ALSO BEING THE NORTH LINE OF HILLCREST DRIVE, A DISTANCE 130.04 FEET TO THE SOUTHEAST CORNER OF SAID LOT 1, THENCE NORTH 20°05'00" W ON THE EASTLINE OF LOTS 1 THRU 14 OF BLOCK 2 OF SAID COUNTRY CLUB HEIGHTS FIRST ADDITION, A DISTANCE 130.00 FEET TO THE SOUTHWEST CORNER OF LOT 14 OF BLOCK 2 OF SAID COUNTRY CLUB HEIGHTS FIRST ADDITION, THENCE S89°39'55" W ON THE NORTH LINE OF SAID LOT 14, A DISTANCE OF 130.00 FEET TO THE NORTHWEST CORNER OF SAID LOT 14, THENCE S01°20'05" E ON THE WEST BEGINNING, CONTAINING 2.31 ACRES, MORE OR LESS.

OWNERS CERTIFICATION:
I, THE UNDERSIGNED MICHAEL D. GONOS, PRESIDENT OF GONOS DEVELOPMENT, INC., OWNER OF THE REAL ESTATE SHOWN AND DESCRIBED HEREIN, DO HEREBY CERTIFY THAT I HAVE Laid OUT, PLATTED, REPLATTED AND SUBDIVIDED, AND DO HEREBY LAY OUT, PLAT, REPLAT AND SUBDIVIDE SAID REAL ESTATE IN ACCORDANCE WITH THIS PLAT. THIS SUBDIVISION SHALL BE KNOWN AND DESIGNATED AS COUNTRY CLUB HEIGHTS SECOND ADDITION, AN ADDITION TO THE CITY OF SEWARD, NEBRASKA. ALL STREETS AND ALLEYS SHOWN AND NOT HERETOFORE DEDICATED ARE HEREBY DEDICATED TO THE PUBLIC UNLESS DEDICATED ARE HEREBY RESERVED FOR PUBLIC USE.

CLEAR TITLE TO THE LAND CONTAINED IN THIS PLAT IS GUARANTEED. ANY ENCUMBRANCES OR SPECIAL ASSESSMENTS ARE EXPLAINED AS FOLLOWS:

THERE ARE STRIPS OF GROUND SHOWN ON THIS PLAT AND MARKED EASEMENT, RESERVED FOR THE USE OF PUBLIC UTILITIES AND SUBJECT TO THE PARAMOUNT RIGHT OF UTILITY OR CITY TO INSTALL, REPAIR, REPLACE AND MAINTAIN ITS INSTALLATIONS.

WITNESS OUR HANDS ON THIS 6th DAY OF February 2003.

Michael D. Gonos
MICHAEL D. GONOS, PRESIDENT
GONOS DEVELOPMENT, INC.

STATE OF NEBRASKA
COUNTY OF Seward
BEFORE ME, THE UNDERSIGNED NOTARY PUBLIC, IN AND FOR THE COUNTY AND STATE, PERSONALLY APPEARED Michael D. Gonos AND EACH SEPARATELY AND SEVERALLY ACKNOWLEDGE THE EXECUTION OF THE FOREGOING INSTRUMENT AS HIS OR HER VOLUNTARY ACT AND DEED, FOR THE PURPOSES HEREIN EXPRESSED. WITNESS MY HAND AND NOTARIAL SEAL THIS 6th DAY OF February 2003.

Notary Public
NOTARY PUBLIC
GERRALD WILKINSON (M) 00000000
MADISON D. VARNER
My Comm. Exp. March 17, 2005

SUBDIVISION CERTIFICATION:
I, JEFFREY J. SERRIN, HEREBY CERTIFY THAT I AM A PROFESSIONAL LAND SURVEYOR REGISTERED IN COMPLIANCE WITH THE LAWS OF THE STATE OF NEBRASKA, THAT THIS PLAT CORRECTLY REPRESENTS A SURVEY CONDUCTED BY ME OR UNDER MY CLOSE PERSONAL SUPERVISION AND THAT THE DIMENSIONS AND AREAS INDICATED THEREON, THAT ALL MONUMENTS SHOWN THEREIN ACCURATELY SHOW AND THAT ALL DIMENSIONAL AND GEODETIC DATA IS CORRECT.

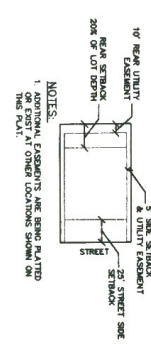
Jeffrey J. Serrin
JEFFREY J. SERRIN LS 334



LEGEND
● MONUMENT FOUND (5/8" REBAR)
(M) = MEASURED DISTANCE
NOTES: BEARINGS ARE ASSUMED
2. ALL MONUMENTS SHOWN AS SET ARE 5/8" BY 24" REBARS.



DETAIL OF TYPICAL BUILDING SETBACKS AND UTILITY EASEMENTS
ZONING DISTRICT: R-3 RESIDENTIAL DISTRICT
(SCALE: 1" = 100')



THIS PLAT APPROVED BY THE CITY COUNCIL OF SEWARD, NEBRASKA, THIS 21st DAY OF January 2003.

Paul J. Blum
PAUL J. BLUM, MAYOR

John Schaefer
JOHN SCHAEFER, CLERK

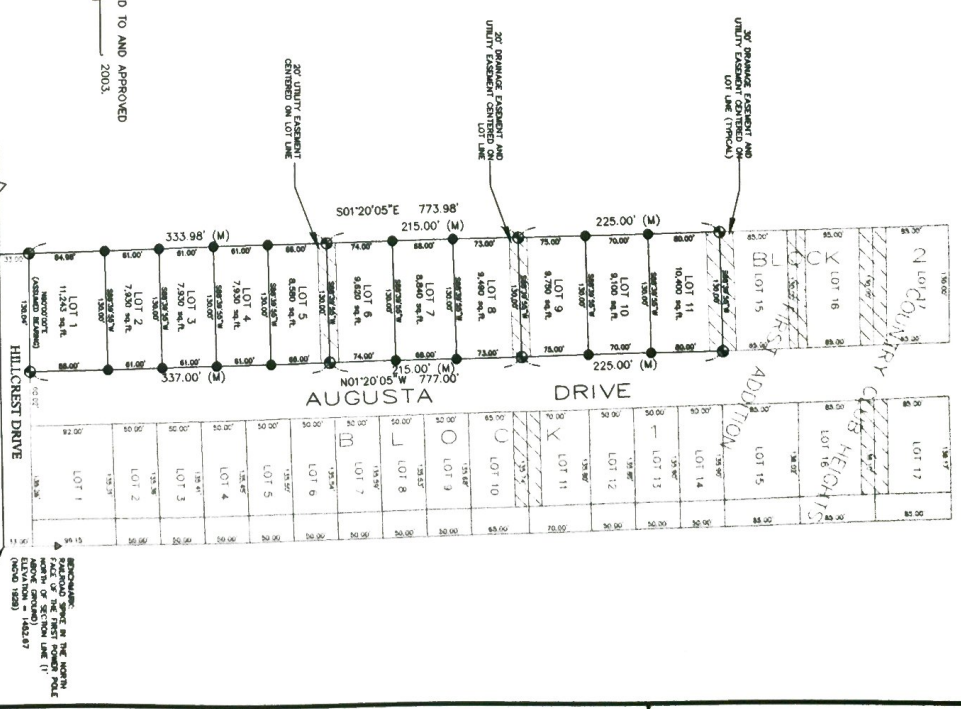
THIS PLAT OF COUNTRY CLUB HEIGHTS SECOND ADDITION HAS BEEN SUBMITTED TO AND APPROVED BY THE SEWARD PLANNING COMMISSION THIS 13th DAY OF February 2003.

Donna Rose
DONNA ROSE, CHAIRPERSON

Conrad A. He
CONRAD A. HE, SECRETARY

ENTITLED ON TRANSFER RECORD THIS 10th DAY OF February 2003.

Lisa M. Bell
LISA M. BELL, REGISTER OF DEEDS DEPUTY
Fee: \$ 27.50 Slide # 102



REMARKS:
A. PART OF THE NORTH LINE OF THE SEWARD PLANNING COMMISSION'S FIRST ADDITION (REPLAT) IS SHOWN ON THIS PLAT.
B. SEE MAP FOR APPROVED SETBACKS AND UTILITY EASEMENTS.
C. SEE MAP FOR APPROVED SETBACKS AND UTILITY EASEMENTS.

DATE	12/22/02
SCALE	1"=100'
TOWN	AS
CDP NO.	528001
FIELD BOOK	
FIELD SHEET	
REVISION	
SHEET	1 of 1

**"FINAL PLAT" COUNTRY CLUB HEIGHTS SECOND ADDITION
REPLAT OF LOTS 1 THRU 14 INCLUSIVE, BLOCK 2
COUNTRY CLUB HEIGHTS FIRST ADDITION
SEWARD, NEBRASKA**

JEO Consulting Group, Inc.
402/443-4881 P.O. BOX 207 WAHOO, NEBRASKA 68066

Country Club Heights 2nd