

COUNTER LM C.E. LM
VERIFY LM D.E. LM
PROOF PL
FEES \$ 34.00
CHECK # 6992
CHG _____ CASH _____
REFUND _____ CREDIT _____
SHORT _____ NCR _____

FILED SARPY COUNTY NEBRASKA
INSTRUMENT NUMBER

2017-22437

09/15/2017 4:07:15 PM

Clay J. Douding

REGISTER OF DEEDS



SANITARY AND IMPROVEMENT DISTRICT STATEMENT
SARPY COUNTY, NEBRASKA

STATE OF NEBRASKA)
) ss.:
COUNTY OF DOUGLAS)

DORIS J. NICHOLSON, being first duly sworn, states that she is the Clerk of Sanitary and Improvement District No. 312 of Sarpy County, Nebraska, and makes the following statement regarding same:

1. District Number: 312
2. Outer Boundaries: See Exhibits "A" and "B" attached hereto

3. The purpose for which the District is organized are, in general, to acquire, build, improve, install, maintain, remove, renew, repair, replace, or otherwise conduct or operate electrical service lines and conduits, a system of sanitary and storm sewers, a water system, a civil defense warning system, a system of sidewalks, public highways, roads, and streets, public waterways, docks or wharfs, and related appurtenances, dikes and levees for flood protection, and public parks, playgrounds, and other recreational facilities, to contract with any one or more corporations, municipalities, or persons for electricity for illumination of public highways, roads, and streets, for gas, for police protection and security services, for water for fire protection and resale to or use by residents within the District, and for disposal of or use of facilities for disposal or refuse, sewage, or other wastes, and to perform any one or more other functions now or hereafter permitted under the provisions of Section 31-727 through 762, R.R.S. of Nebraska, 1943, as amended, or any other applicable provisions of law; and, for the effectuation of its purposes, the powers of the District include without limitation all powers now or hereafter granted under said provisions and all other powers now or hereafter granted to public corporations under the law of Nebraska appropriate, convenient, or necessary to said purposes.

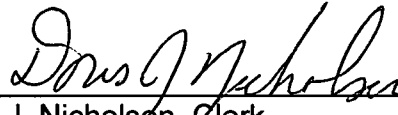
4. The District has the power to levy an unlimited property tax to pay its debt and its expenses of operation and maintenance.

5. The District is required by statute to levy special assessments on property in the District to the full extent of special benefits arising by reason of improvements installed by it and may further be required to levy such special assessments in accordance with the terms of a Subdivision Agreement with the City of Omaha.

6. In all years when a budget is required by law, the District's annual budget is filed with the County Clerk, which budget shows anticipated revenue and expenses, tax rate (mill levy), and indebtedness of the District.

7. The actual current tax rate (mill levy) of the District may be obtained from the County Clerk.

8. A copy of the District's annual financial audit is on file with the Clerk of the District and the State Auditor of Public Accounts.



Doris J. Nicholson, Clerk
Sanitary and Improvement District
No. 312 of Sarpy County, Nebraska

SUBSCRIBED and sworn to before me this 11th day of September, 2017.

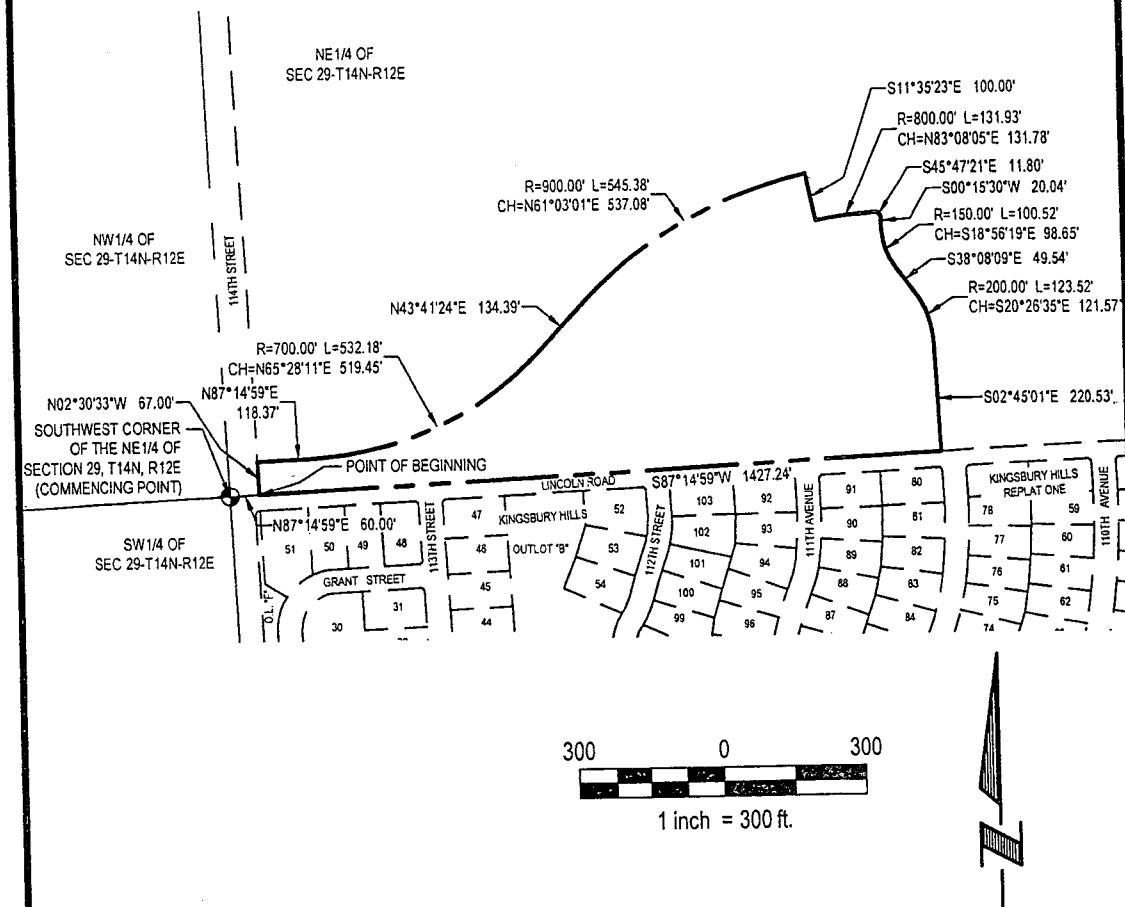
State of Nebraska – General Notary
MARY JAYNE THROENER
My Commission Expires
September 27, 2020



Notary Public

{ NOTE: Copies filed with SARPY COUNTY REGISTER OF DEEDS, PAPILLION CITY CLERK, SARPY COUNTY CLERK, SARPY COUNTY ELECTION COMMISSIONER, SARPY COUNTY SHERIFF, SARPY COUNTY PLANNING DEPARTMENT, PAPILLION CITY PLANNING DEPARTMENT }

EXHIBIT "A"




LEGAL DESCRIPTION

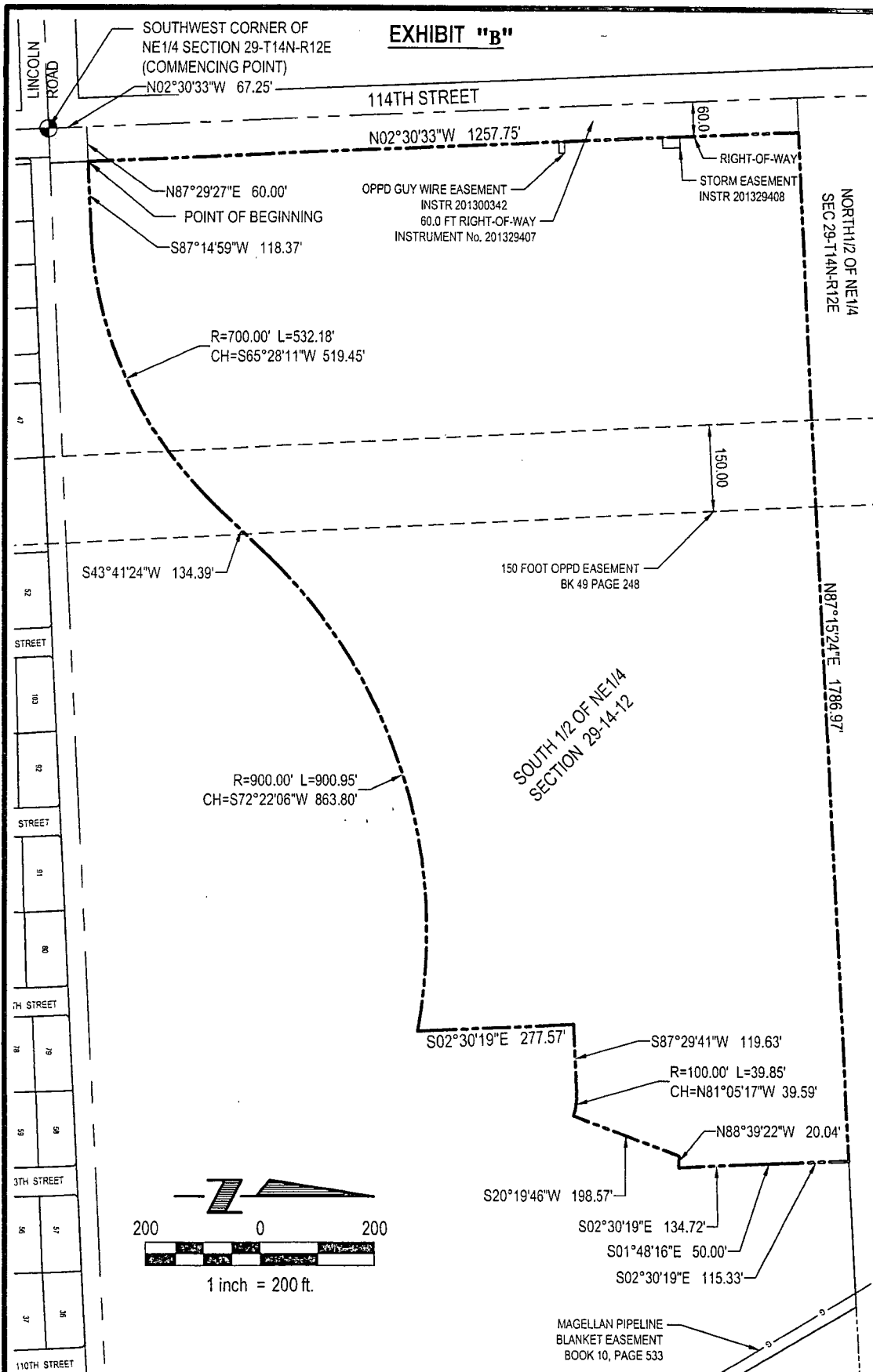
A TRACT OF LAND LOCATED IN PART OF THE SE 1/4 OF THE NE 1/4 AND THE SW 1/4 OF THE NE 1/4, ALL LOCATED IN SECTION 29, TOWNSHIP 14 NORTH, RANGE 12 EAST OF THE 6TH P.M., SARPY COUNTY, NEBRASKA. MORE PARTICULARLY DESCRIBED AS FOLLOWS:

COMMENCING AT THE SOUTHWEST CORNER OF SAID NE 1/4 OF SECTION 29; THENCE N87°14'59"E (ASSUMED BEARING) ALONG THE SOUTH LINE OF SAID NE 1/4 OF SECTION 29, SAID LINE ALSO BEING THE NORTH RIGHT-OF-WAY LINE OF LINCOLN ROAD, A DISTANCE OF 60.00 FEET TO THE POINT OF INTERSECTION OF THE NORTH RIGHT-OF-WAY LINE OF LINCOLN ROAD AND THE EAST RIGHT-OF-WAY LINE OF 114TH STREET, SAID POINT ALSO BEING THE POINT OF BEGINNING; THENCE N02°30'33"W ALONG SAID EAST RIGHT-OF-WAY LINE OF 114TH STREET, A DISTANCE OF 67.00 FEET; THENCE NORTHEASTERLY ON A CURVE TO THE LEFT WITH A RADIUS OF 700.00 FEET, A DISTANCE OF 532.18 FEET, SAID CURVE ALSO HAVING A LONG CHORD WHICH BEARS N65°28'11"E, A DISTANCE OF 519.45 FEET; THENCE N43°41'24"E, A DISTANCE OF 134.39 FEET; THENCE NORTHEASTERLY ON A CURVE TO THE RIGHT WITH A RADIUS OF 900.00 FEET, A DISTANCE OF 545.38 FEET, SAID CURVE ALSO HAVING A LONG CHORD WHICH BEARS N61°03'01"E, A DISTANCE OF 537.08 FEET; THENCE S11°35'23"E, A DISTANCE OF 100.00 FEET; THENCE NORTHEASTERLY ON A CURVE TO THE RIGHT WITH A RADIUS OF 800.00 FEET, A DISTANCE OF 131.93 FEET, SAID CURVE ALSO HAVING A LONG CHORD WHICH BEARS N83°08'05"E, A DISTANCE OF 131.78 FEET; THENCE S45°47'21"E, A DISTANCE OF 11.80 FEET; THENCE S00°15'30"W, A DISTANCE OF 20.04 FEET; THENCE SOUTHEASTERLY ON A CURVE TO THE LEFT WITH A RADIUS OF 150.00 FEET, A DISTANCE OF 100.52 FEET, SAID CURVE ALSO HAVING A LONG CHORD WHICH BEARS S18°56'19"E, A DISTANCE OF 98.65 FEET; THENCE S38°08'09"E, A DISTANCE OF 49.54 FEET; THENCE SOUTHEASTERLY ON A CURVE TO THE RIGHT WITH A RADIUS OF 200.00 FEET, A DISTANCE OF 123.52 FEET, SAID CURVE ALSO HAVING A LONG CHORD WHICH BEARS S20°26'35"E, A DISTANCE OF 121.57 FEET; THENCE S02°45'01"E, A DISTANCE OF 220.53 FEET TO A POINT ON SAID SOUTH LINE OF THE NE 1/4 OF SECTION 29, SAID POINT ALSO BEING ON SAID NORTH RIGHT-OF-WAY LINE OF LINCOLN ROAD; THENCE S87°14'59"W ALONG SAID SOUTH LINE OF THE NE 1/4 OF SECTION 29, SAID POINT ALSO BEING SAID NORTH RIGHT-OF-WAY LINE OF LINCOLN ROAD, A DISTANCE OF 1427.24 FEET TO THE POINT OF BEGINNING.

SAID TRACT OF LAND CONTAINS AN AREA OF 450,324 SQUARE FEET OR 10.338 ACRES, MORE OR LESS.

 E & A CONSULTING GROUP, INC. Engineering Answers	E & A CONSULTING GROUP, INC. Engineering • Planning • Environmental & Field Services 10909 Mill Valley Road, Suite 100 • Omaha, NE 68154 Phone: 402.895.4700 • Fax: 402.895.3599		DISTRICT ANNEXATION (Phase II) PART OF THE S1/2 OF THE NE1/4 SECTION 29, T14N, R12E SARPY COUNTY, NEBRASKA	
	Drawn by: JRS	Chkd by:	Date: 10/24/2016	
	Job No.: P2013.604.001		Date: 10/25/2016	

C



 E & A CONSULTING GROUP, INC. Engineering • Planning • Environmental & Field Services 10909 Mill Valley Road, Suite 100 • Omaha, NE 68154 Phone: 402.895.4790 • Fax: 402.895.3599	E & A CONSULTING GROUP, INC. Engineering • Planning • Environmental & Field Services 10909 Mill Valley Road, Suite 100 • Omaha, NE 68154 Phone: 402.895.4790 • Fax: 402.895.3599		DISTRICT ANNEXATION (Phase II) SANITARY & IMPROVEMENT DISTRICT NO. 312 SARP COUNTY, NEBRASKA
	Drawn by: CJV Chkd by:	Date: 08/31/2017	
	Job No.: 2013.604.001		

LEGAL DESCRIPTION

A TRACT OF LAND BEING PART OF THE SE1/4 OF THE NE1/4 AND THE SW1/4 OF THE NE1/4 OF SECTION 29, TOWNSHIP 14 NORTH, RANGE 12 EAST OF THE 6TH P.M., SARPY COUNTY, NEBRASKA, MORE OR LESS DESCRIBED AS FOLLOWS:

COMMENCING AT THE SOUTHWEST CORNER OF SAID NE1/4 OF SECTION 29; THENCE N02°30'33"W (ASSUMED BEARING) ALONG THE WEST LINE OF SAID NE1/4 OF SECTION 29, A DISTANCE OF 67.25 FEET; THENCE N87°29'27"E, A DISTANCE OF 60.00 FEET TO A POINT ON THE EAST RIGHT-OF-WAY LINE OF 114TH STREET, SAID POINT ALSO BEING THE POINT OF BEGINNING; THENCE N02°30'33"W ALONG SAID EAST RIGHT-OF-WAY LINE OF 114TH STREET, A DISTANCE OF 1,257.75 FEET TO A POINT ON THE NORTH LINE OF THE SOUTH1/2 OF SAID NE1/4 OF SECTION 29; THENCE N87°15'24"E ALONG SAID NORTH LINE OF SOUTH1/2 OF THE NE1/4 OF SECTION 29, A DISTANCE OF 1,786.97 FEET; THENCE S02°30'19"E, A DISTANCE OF 115.33 FEET; THENCE S01°48'16"E, A DISTANCE OF 50.00 FEET; THENCE S02°30'19"E, A DISTANCE OF 134.72 FEET; THENCE N88°39'22"W, A DISTANCE OF 20.04 FEET; THENCE S20°19'46"W, A DISTANCE OF 198.57 FEET; THENCE NORTHWESTERLY ON A CURVE TO THE LEFT WITH A RADIUS OF 100.00 FEET, A DISTANCE OF 39.85 FEET, SAID CURVE HAVING A LONG CHORD WHICH BEARS N81°05'17"W, A DISTANCE OF 39.59 FEET; THENCE S87°29'41"W, A DISTANCE OF 119.63 FEET; THENCE S02°30'19"E, A DISTANCE 277.57 FEET; THENCE SOUTHWESTERLY ON A CURVE TO THE LEFT WITH A RADIUS OF 900.00 FEET, A DISTANCE OF 900.95 FEET, SAID CURVE HAVING A LONG CHORD WHICH BEARS S72°22'06"W, A DISTANCE OF 863.80 FEET; THENCE S43°41'24"W A DISTANCE OF 134.39 FEET; THENCE SOUTHWESTERLY ON A CURVE TO THE RIGHT WITH A RADIUS OF 700.00 FEET, A DISTANCE OF 532.18 FEET, SAID CURVE HAVING A LONG CHORD WHICH BEARS S65°28'11"W, A DISTANCE OF 519.45 FEET; THENCE S87°14'59"W, A DISTANCE OF 118.37 FEET TO THE POINT OF BEGINNING

SAID TRACT OF LAND CONTAINS AN AREA OF 1,589,425 SQUARE FEET OR 36.488 ACRES, MORE OR LESS.



E & A CONSULTING GROUP, INC.

Engineering • Planning • Environmental & Field Services

10909 Mill Valley Road, Suite 100 • Omaha, NE 68154 Phone: 402.895.4700 • Fax: 402.895.3599

Drawn by: CJV Chkd by:

Date: 08/31/2017

Job No.: 2013.604.001

**DISTRICT ANNEXATION
(Phase II)
SANITARY & IMPROVEMENT**

DISTRICT NO. 312

SARPY COUNTY, NEBRASKA