

Entered as Instrument No. 98-105808

STATE OF NEBRASKA) SS
COUNTY OF HALL)

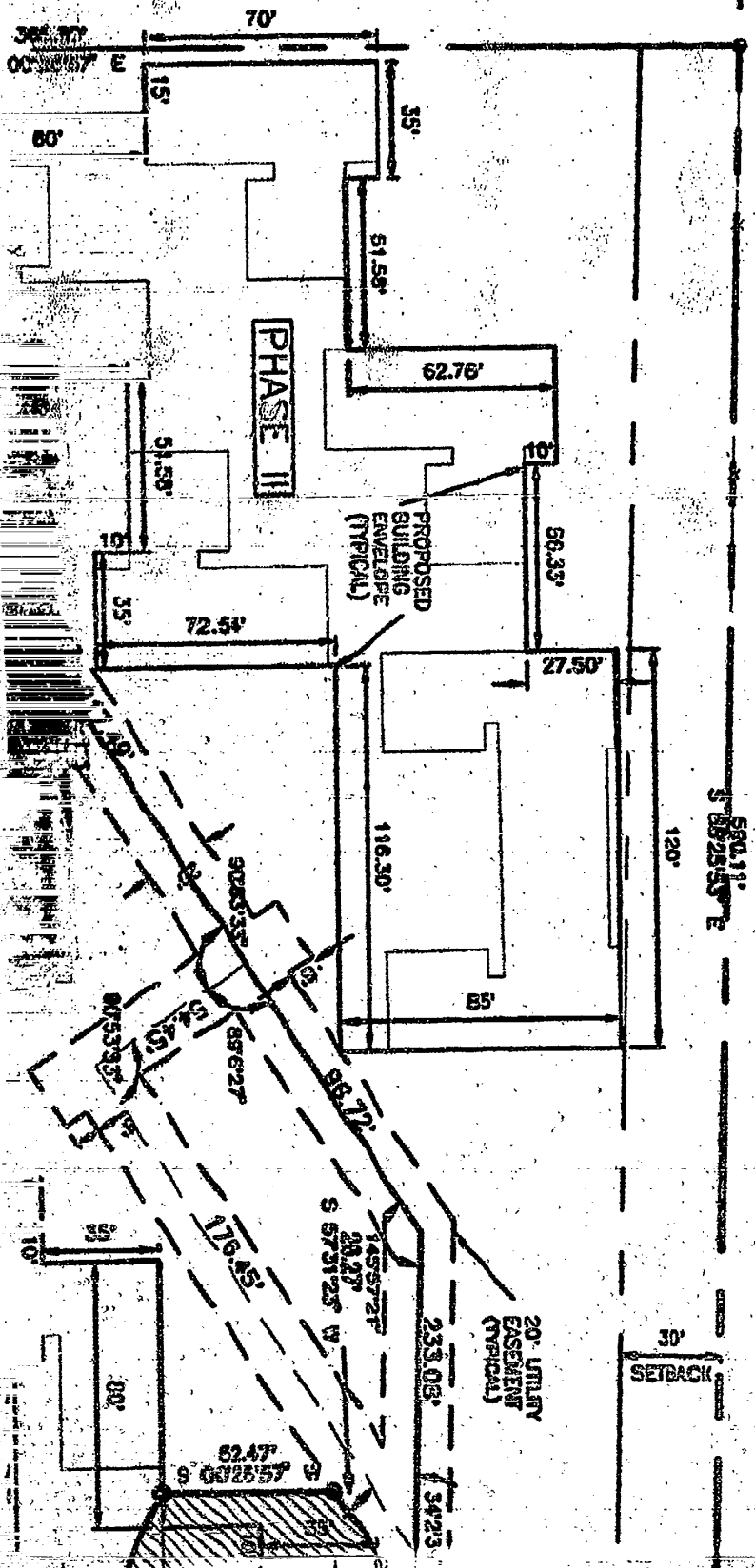
98 JUN 17 AM 10:52

David L. ...
PLAT OF RECORD

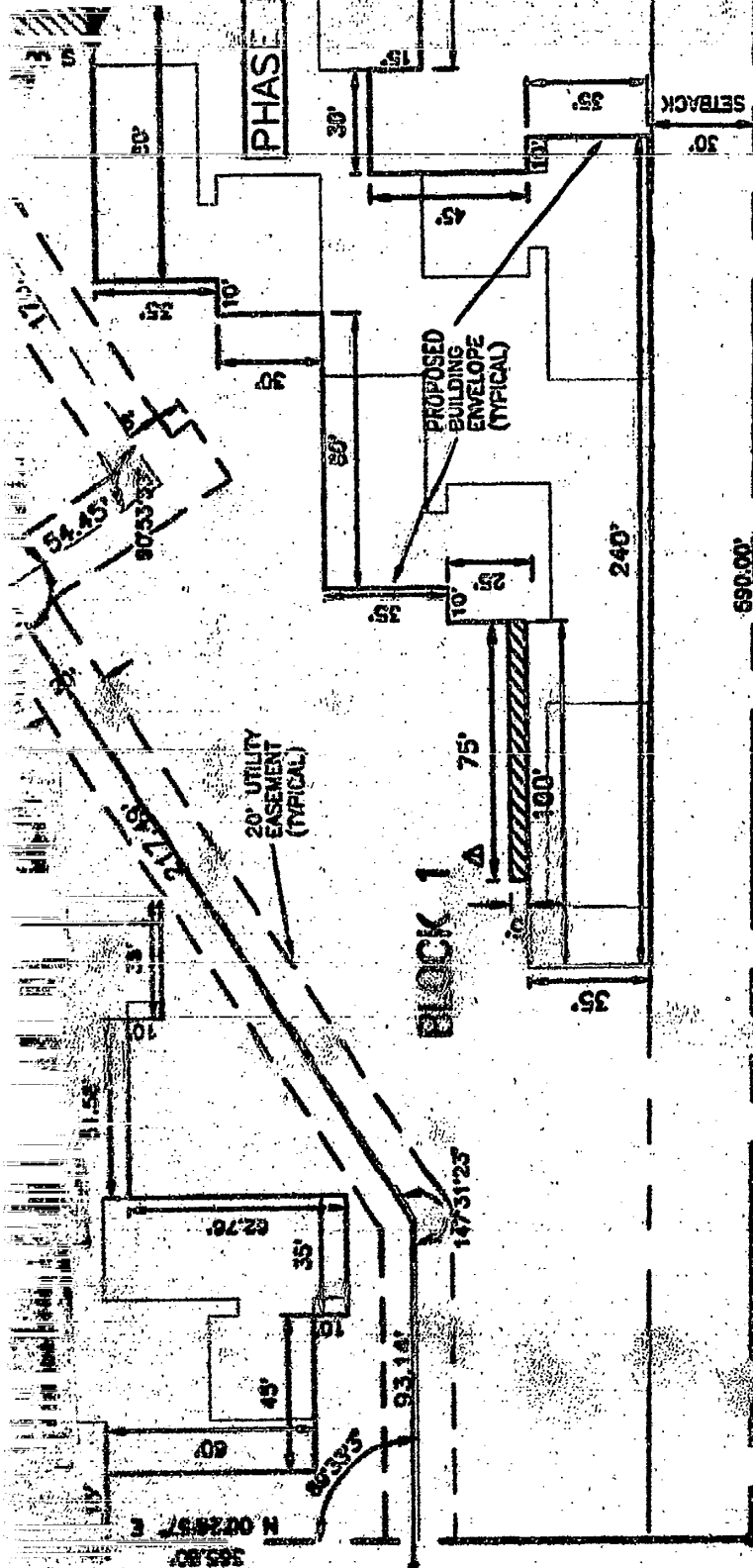
G.I.I. SUBDIVISION
NOT A PART


G.I.I. SECOND SUBDIVISION GRAND ISLAND, NEBR.

REVISION 5/4/98, ADDED 5' X 75'
ADDITIONAL BUILDING ENVELOPE
SPACE.



NOT A PART




OLSSON ASSOCIATES
ENGINEERS
 203 E. 2nd St.
 P.O. Box 1072
 Grand Island, NE 68801
 508-284-8750

SHEET 1 OF 2

POINT OF BEGINNING
 SUPER BOWL SUBMISSION
 LOT 1
 NOT A PART

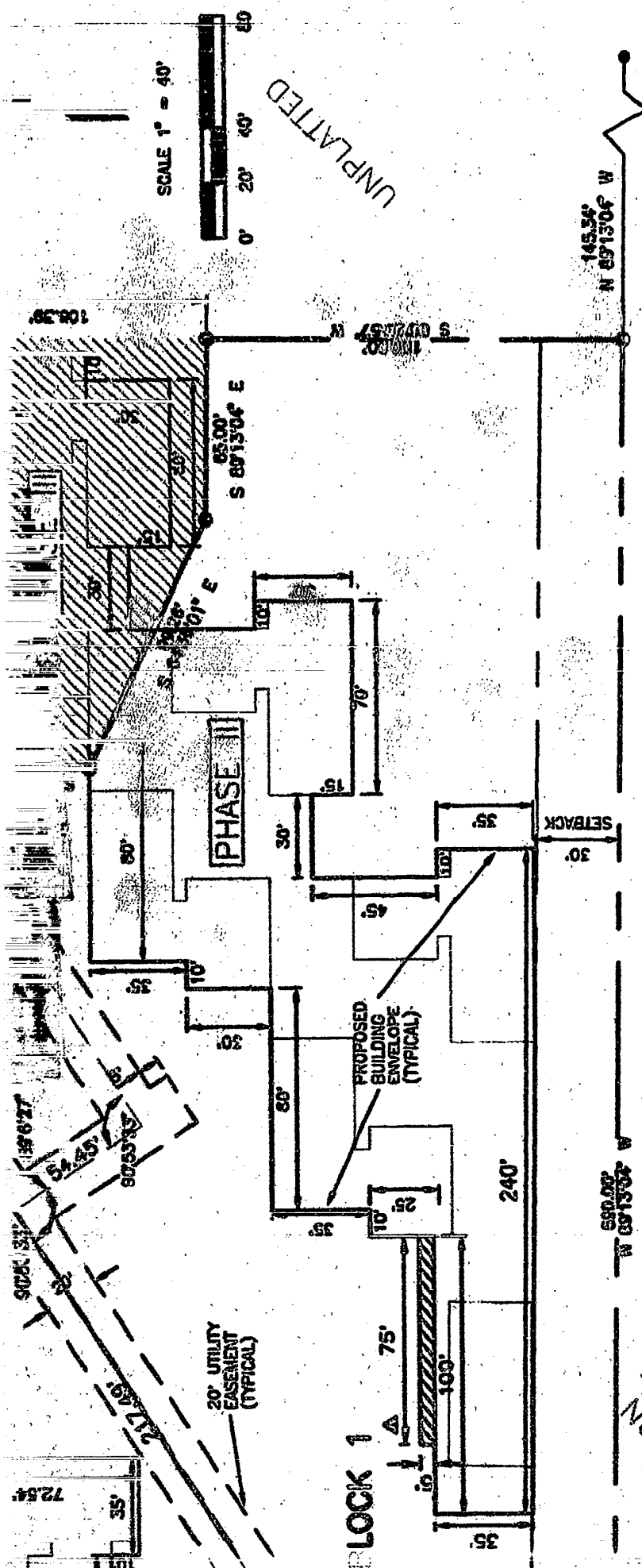
- FOUND CORNER
- SET 3/4" PIPE

NOT A PART

NOT A PART

SHEET 1 OF 2

CHARTER



UNPLATTED

SCALE 1" = 40'

145.34' N 89°13'06" W

SUBMITTED TO AND APPROVED BY THE REGIONAL PLANNING COMMISSION OF HALL COUNTY, GRAND ISLAND, WOOD RIVER, AND THE VILLAGES OF ALDA, CAIRO, AND DONIPHAN, NEBRASKA.

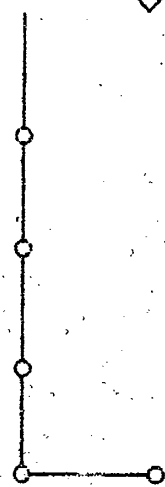
5-6-98
DATE

Darryl Mead
CHAIRMAN

NOT A PART

WILL SUBDIVISION

● FOUND CORNER
○ SET 3/4" PIPE



20' UTILITY EASEMENT (TYPICAL)

PROPOSED BUILDING ENVELOPE (TYPICAL)

SETBACK

BLOCK 1

PHASE II

240'

500.00' N 89°13'06" W

108.24'

SCALE 1" = 40'



90°K 33'

54.23'

60.25' ±

217.49'

35'

10'

72.54'

35'

10'

35'

10'

35'

85.00' S 89°13'06" E

S 13°28'10" E

100'

70'

30'

10'

30'

35'

30'

35'

35'

75'

100'

35'

35'

100'

35'

35'

35'

35'

35'

35'

35'

35'

35'

35'

35'

35'

35'

35'

35'

35'

35'

35'

35'

35'

35'

35'

35'

35'

35'

35'

35'

35'

35'

35'

35'

35'

35'

35'

35'

35'

35'

35'

35'

35'

35'

35'

35'

35'

35'

35'

35'

35'

35'

35'

35'

35'

35'

35'

35'

35'

35'

35'

35'

35'

35'

35'

35'

35'

35'

35'

35'

35'

35'

35'

35'

35'

35'

35'

35'

35'

35'

35'

35'

35'

35'

35'

35'

35'

35'

35'

35'

35'

35'

35'

35'

35'

35'

35'

35'

35'

35'

35'

35'

35'

35'

35'

35'

35'

35'

35'

35'

35'

35'

35'

35'

35'

35'

35'

35'

35'

35'

35'

35'

35'

35'

35'

35'

35'

35'

35'

35'

35'

35'

35'

35'

35'

35'

35'

35'

35'

35'

35'

35'

35'

35'

35'

35'

35'

35'

35'

35'

35'

35'

35'

35'

35'

35'

35'

35'

98-205836

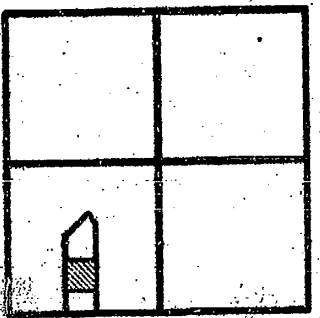
EAST
E. NORTH
BEGINNING
SER OF
2.11

52.47 FEET.
304 E
150.00 FEET
DIVISION, THEREBY
E. SUPERVISION
ACT CONTAINING

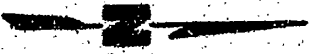
PERSONAL SUPERVISION, I
COUNTY, NEBRASKA, AS
AND ACCURATELY
E. MARKED HERE FOUND
OF ARE AS SHOWN ON
SERVEY WAS MADE



LOCATION MAP
SEC. 19, T11N R9W



NOT TO SCALE



ACKNOWLEDGMENT

STATE OF NEBRASKA
COUNTY OF GARDNER
ON THE 19th DAY OF
A NOTARY PUBLIC WITHIN AND FOR SAID COUNTY, PERSONALLY APPEARED,
WARD F. HOPPE, PERSONALLY KNOWN TO ME,
MARKED SIGNATURE \$-1 IN
PRESENCE OF ME AND
IN WITNESS WHEREOF,



ENGINEERS
201 E. 2ND ST
P.O. BOX 1072
Grand Island, NE 68001
508-384-8789

LEGAL DESCRIPTION

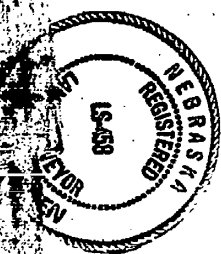
A TRACT OF LAND LOCATED IN THE SOUTHEAST QUARTER (SE 1/4) OF SECTION FIFTEEN (15), TOWNSHIP ELEVEN (11) NORTH RANGE NINE (9) WEST OF THE 6TH P.M. HALL COUNTY, NEBRASKA AND MORE PARTICULARLY DESCRIBED AS FOLLOWS: COMMENCING AT THE SOUTHEAST CORNER OF G.L.L. SUBDIVISION, SAID CORNER BEING A POINT ON THE NORTH BOUNDARY OF LOT 1 SUPER BOWL SUBDIVISION AND THE POINT OF BEGINNING, THENCE N 00°26'57" E ALONG THE EAST BOUNDARY OF SAID G.L.L. SUBDIVISION A DISTANCE OF 365.80 FEET TO THE NORTHEAST CORNER OF SAID G.L.L. SUBDIVISION, THENCE S 89°25'53" E A DISTANCE OF 590.11 FEET, THENCE S 00°26'57" W A DISTANCE OF 101.31 FEET, THENCE N 89°25'53" W A DISTANCE OF 132.98 FEET, THENCE S 57°31'25" W A DISTANCE OF 26.27 FEET, THENCE S 69°28'57" W A DISTANCE OF 52.47 FEET, THENCE S 64°38'01" E A DISTANCE OF 99.28 FEET, THENCE S 89°13'04" E A DISTANCE OF 65.00 FEET, THENCE S 00°26'57" W A DISTANCE OF 151.00 FEET TO A POINT ON THE NORTH BOUNDARY OF LOT 1 SUPER BOWL SUBDIVISION, THENCE N 89°13'04" W ALONG THE NORTH BOUNDARY OF LOT 1 SUPER BOWL SUBDIVISION A DISTANCE OF 580.00 FEET TO THE POINT OF BEGINNING, SAID TRACT CONTAINING 4.565 ACRES MORE OR LESS.

REVISION 4/4/95, ADDED 5' X 75' ADDITIONAL BUILDING ENVELOPE SPACE. SEE REVISED PLAT.

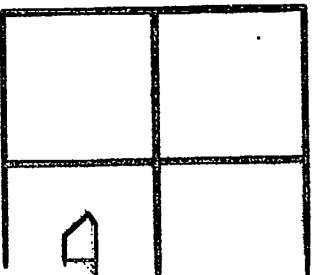
SURVEYOR'S CERTIFICATE

I HEREBY CERTIFY THAT ON 1998, UNDER MY PERSONAL SUPERVISION, I COMPLETED AN ACCURATE SURVEY OF "GULF SECOND SUBDIVISION", HALL COUNTY, NEBRASKA, AS SHOWN ON THE ACCOMPANYING PLAT THEREOF; THAT THE LOT CONTAINED IN SAID ADDITION IS SHOWN ON THE ACCOMPANYING PLAT THEREOF IS WELL AND ACCURATELY STAKED OFF AND MARKED; THAT IRON PIPE MARKERS EXCEPT WHERE INDICATED WERE FOUND OR PLACED AT ALL LOT CORNERS; THAT THE DIMENSIONS OF THE LOT ARE AS SHOWN ON THE PLAT; THAT THE LOT BEARS ITS OWN NUMBER; AND THAT SAID SURVEY WAS MADE WITH REFERENCE TO KNOWN AND RECORDED MONUMENTS.

[Signature]
 TUDOR J. Aiken, REGISTERED LAND SURVEYOR NUMBER LS-458



LOCATION MAP
 SEC. 15, T11N R9W



NOT TO SCALE

ACKNOWLEDGE

STATE OF NEBRASKA
 COUNTY OF GOSWORTHY
 ON THE 21st DAY OF April
 A NOTARY PUBLIC, WITHIN AND FOR SAID COUNTY
 WARD F. HOFFE, PERSONALLY KNOWN TO BE THE
 WHOSE SIGNATURE IS AFFIXED HERETO, AND ACK-
 THEREOF TO BE HIS VOLUNTARY ACT AND DEED,
 IN WITNESS WHEREOF, I HAVE HEREUNTO SET
 MY OFFICIAL SEAL AT St. Paul, Kansas

STATE OF NEBRASKA
COUNTY OF WALL
ON THE 21 DAY OF June
A NOTARY PUBLIC, WITHIN AND FOR SAID
WARD F. HOPPE, PERSONALLY KNOWN TO
WHOSE SIGNATURE IS AFFIXED HERETO, AND
THEREOF TO BE HIS VOLUNTARY ACT AND
IN WITNESS WHEREOF, I HAVE HEREUNTO
MY OFFICIAL SEAL AT Lincoln, Nebraska



TIMOTHY J. ATKEN, REGISTERED LAND SURVEYOR NUMBER LS-458

MY COMMISSION EXPIRES October 4

Walter W. Carr
NOTARY PUBLIC

DEDICATION

KNOW ALL MEN BY THESE PRESENTS, THAT HOPPE INC., A CORPORATION,
BEING THE OWNER OF THE LAND DESCRIBED HEREON, HAS
CAUSED SAME TO BE SURVEYED, SUBDIVIDED, PLATTED AND DESIGNATED
AS "GULF SECOND SUBDIVISION", WALL COUNTY, NEBRASKA, AS SHOWN ON THE
ACCOMPANYING PLAT THEREOF AND DO HEREBY DEDICATE THE ROAD & UTILITY
EASEMENTS, AS SHOWN THEREON TO THE PUBLIC FOR THEIR USE FOREVER
FOR THE LOCATION, CONSTRUCTION AND MAINTENANCE OF ROADS AND FOR PUBLIC
SERVICE UTILITIES, TOGETHER WITH THE RIGHT OF INGRESS AND EGRESS THEREON,
AND HEREBY PROMISING THE PLANTING OF TREES, BUSHES AND SHRUBS, OR
PLACING OTHER OBSTRUCTIONS UPON, OVER, ALONG OR UNDERNEATH THE SURFACE
OF SUCH EASEMENTS, AND THAT THE FOREGOING SUBDIVISION AS MORE PAR-
TICULARLY DESCRIBED IN THE DESCRIPTION HEREON AS APPEARS ON THIS
PLAT IS MADE WITH THE FREE CONSENT AND IN ACCORDANCE WITH THE DESIRES
OF THE UNDERSIGNED OWNER AND PROPRIETOR.

IN WITNESS WHEREOF, I HAVE AFFIXED MY SIGNATURE HERETO, AT LINCOLN,
NEBRASKA, THIS _____ DAY OF _____, 1998

W. F. Hoppe
G.I. CHERRY PARK, LTD., TWO
WARD F. HOPPE, MANAGER
MANAGER, G.I.L.I., LLC, GENERAL PARTNER

INDUSTRY THIS NAME:



ON THE 24th DAY OF July, 1999 BEFORE ME
A NOTARY PUBLIC, WITHIN AND FOR SAID COUNTY, PERSONALLY APPEARED,
WARD F. HOFFE, PERSONALLY KNOWN TO BE THE IDENTICAL PERSON
WHOSE SIGNATURE IS AFFIXED HERETO, AND ACKNOWLEDGED THE EXECUTION
THEREOF TO BE HIS VOLUNTARY AND DEED.
IN WITNESS WHEREOF, I HAVE HEREUNTO SUBSCRIBED MY NAME AND AFFIXED
MY OFFICIAL SEAL AT Grand Island, NE ON THE DATE LAST ABOVE WRITTEN.

MY COMMISSION EXPIRES October 1999



Carolyn Loscher
NOTARY PUBLIC

ENGINEERS
201 E. 2ND ST.
P.O. Box 1072
Grand Island, NE 68801
308-584-8760

G.I.L.I.
SECOND
SUBDIVISION

FINAL
PLAT

GRAND
ISLAND
NEBRASKA

drawn by CDZ
checked by CDZ
approved by K.L.B.
project no: 91-1236
drawing no: 0017.
read 5/7/99
date: 5/7/99
revisions: A ADDED 6' X 76'
ADDITIONAL BUILDING
ENVELOPE SPACE

SHEET 2 OF 2

CORPORATION,
SIGNATURE
SHOWN ON THE
LOND & UTILITY
THE FOREST
AND FOR PUBLIC
D EGRESS THEREON,
AND SURVEY, OR
BENEATH THE SURFACE
AS MORE PAR-
TICULARS ARE SET
FORTH IN THE DEEDS
WITH THE DEEDS

AT LONGVIEW,
1998