



and levees for flood protection for the District. In lieu of establishing its own water system, the District may contract with any utilities district, municipality or corporation for the installation of a water system and to provide water service for fire protection and for use of the residents of the District. The District may contract with the city or county within whose zoning jurisdiction it is located for intersection and traffic control improvements, which improvements serve or benefit the district and which may be within or without the corporate boundaries of the district and for any of the purposes for which it is formed. The District may also enter into agreements with other public agencies in order to accomplish the purposes of, and pursuant to, the provisions of the Nebraska Interlocal Cooperation Act; and do any and all other activities or functions allowed by the Reissued, Revised Statutes of Nebraska as the same may be amended from time to time.

4. The District has power to levy an unlimited property tax to pay its debt and its expenses of operation and maintenance, subject to limitations imposed by statute.


5. The District is required by statute to levy special assessments on property in the district to the full extent of special benefits arising by reason of improvements installed by it.

6. In all years when a budget is required by law, the District's annual budget is filed with the County Clerk, which budget shows anticipated revenue and expenses, tax levy, and indebtedness of the District.

7. The actual current tax levy of the District may be obtained from the Sarpy County Clerk.

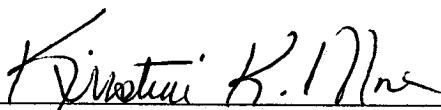
8. A copy of the District's annual financial audit is on file with the Clerk of the District and the State Auditor of Public Accounts.

DATED: October 12, 2018

  
\_\_\_\_\_  
Michelle Zimmerman, Clerk  
SID No. 337 of Sarpy County, Nebraska

SUBSCRIBED AND SWORN TO before me this 12<sup>th</sup> day of October, 2018.

State of Nebraska - General Notary  
KRISTINE K MOORE  
My Commission Expires  
February 18, 2019

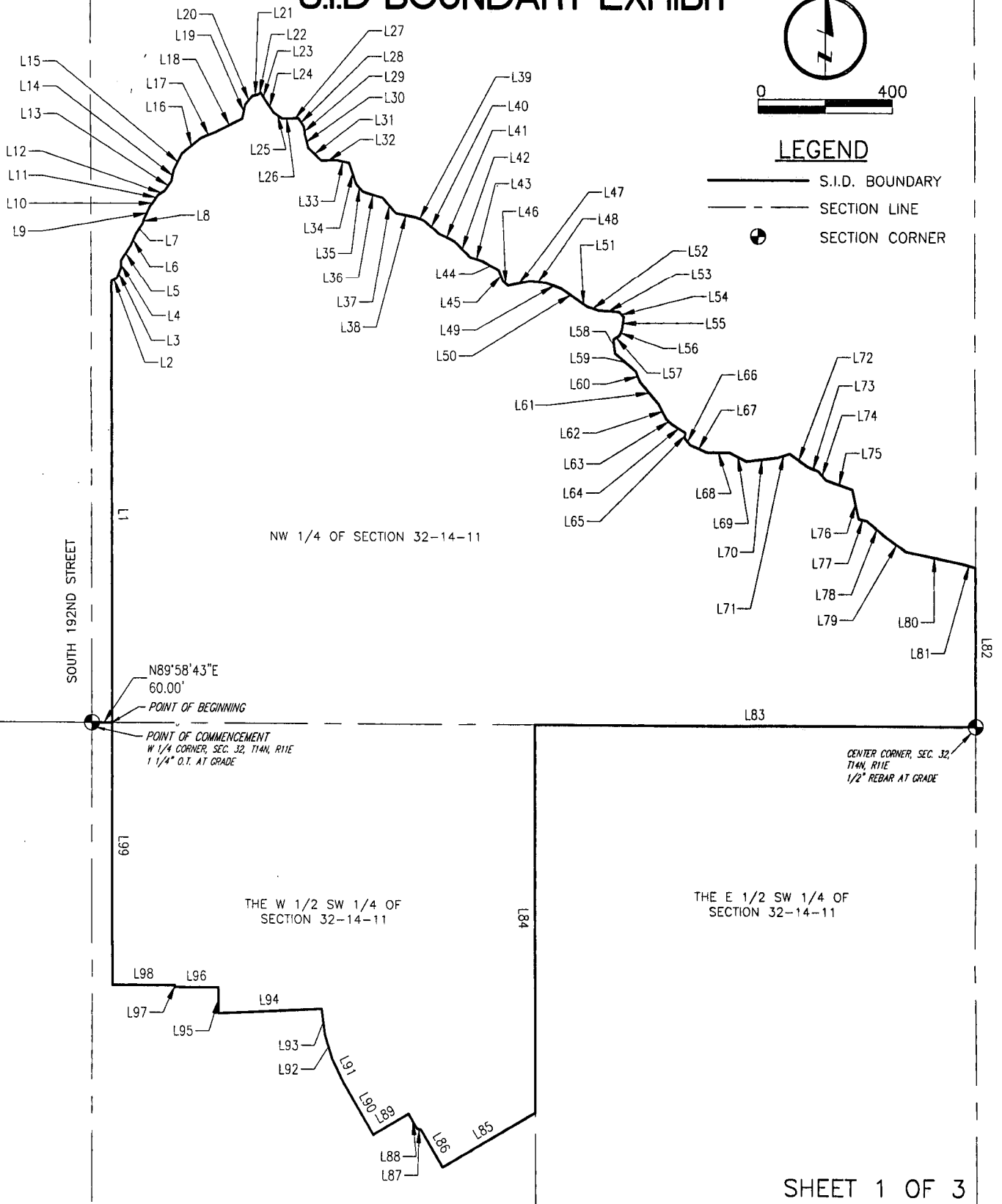
  
\_\_\_\_\_  
Notary Public

# S.I.D BOUNDARY EXHIBIT



## LEGEND

- S.I.D. BOUNDARY
- SECTION LINE
- SECTION CORNER



SHEET 1 OF 3



**LAMP RYNEARSON  
& ASSOCIATES**

14710 West Dodge Road, Suite 100 402.496.2498 | P  
Omaha, Nebraska 68154-2027 402.496.2730 | F  
www.LRA-Inc.com

DRAWN BY	DESIGNED BY	REVIEWED BY	PROJECT - TASK NUMBER	DATE	BOOK AND PAGE	REVISIONS
EAM		JLC	0117115.01-003	9-11-18		

L:\Engineering\0117115 Hidden Hollow\SURVEY\DRAWINGS\0117115-SID.dwg, 9/14/2018 9:16:39 AM, ELISE A. MOLLAK, LAMP RYNEARSON & ASSOCIATES

# S.I.D BOUNDARY EXHIBIT

BOUNDARY LINE TABLE		
LINE #	DIRECTION	LENGTH
L1	N0°15'46"W	1301.37'
L2	N62°27'48"E	17.16'
L3	N22°06'32"E	33.47'
L4	N0°32'19"E	22.97'
L5	N33°14'29"E	51.80'
L6	N23°58'51"E	37.64'
L7	N33°16'25"E	38.27'
L8	N15°30'05"E	11.13'
L9	N25°06'53"E	41.68'
L10	N36°22'35"E	24.97'
L11	N33°46'26"E	15.41'
L12	N56°20'09"E	25.08'
L13	N34°53'22"E	34.51'
L14	N11°21'14"E	32.80'
L15	N26°56'15"E	54.08'
L16	N51°06'24"E	71.73'
L17	N67°53'49"E	50.40'
L18	N63°28'55"E	87.10'
L19	N12°12'43"E	42.50'
L20	N39°38'36"E	32.51'
L21	N77°32'05"E	18.72'
L22	N54°11'38"E	9.28'
L23	S32°01'09"E	29.64'
L24	S34°36'14"E	39.49'
L25	S54°38'46"E	30.87'

BOUNDARY LINE TABLE		
LINE #	DIRECTION	LENGTH
L26	S89°53'51"E	28.77'
L27	N86°48'26"E	21.03'
L28	S32°44'14"E	29.84'
L29	S8°40'07"E	26.83'
L30	S14°14'13"E	36.28'
L31	S46°43'04"E	54.12'
L32	N88°09'43"E	45.36'
L33	S78°06'17"E	39.32'
L34	S18°43'33"E	64.09'
L35	S41°46'13"E	31.16'
L36	S73°51'32"E	61.46'
L37	S41°05'06"E	60.75'
L38	S79°08'29"E	59.85'
L39	S69°21'31"E	24.86'
L40	S50°06'45"E	60.15'
L41	S64°07'08"E	49.75'
L42	S45°02'13"E	66.53'
L43	S71°46'50"E	40.52'
L44	S61°01'01"E	52.84'
L45	S20°51'25"E	37.39'
L46	S52°37'49"E	18.24'
L47	N79°19'54"E	67.55'
L48	S83°28'26"E	46.30'
L49	S70°57'04"E	47.93'
L50	S54°56'47"E	66.95'

BOUNDARY LINE TABLE		
LINE #	DIRECTION	LENGTH
L51	S55°55'36"E	27.94'
L52	S72°28'32"E	34.90'
L53	S85°33'45"E	62.04'
L54	S41°49'32"E	20.76'
L55	S8°26'33"W	37.19'
L56	S22°23'26"W	20.29'
L57	S60°02'41"W	20.58'
L58	S7°12'26"E	41.35'
L59	S49°56'54"E	80.71'
L60	S22°03'19"E	33.20'
L61	S41°11'30"E	86.46'
L62	S27°37'33"E	48.62'
L63	S46°47'47"E	22.97'
L64	S58°58'17"E	48.44'
L65	S7°28'28"W	16.34'
L66	S41°51'39"E	26.57'
L67	S67°29'31"E	53.57'
L68	S89°34'46"E	68.53'
L69	S63°22'58"E	56.50'
L70	N83°13'58"E	94.05'
L71	N72°05'12"E	37.88'
L72	S54°36'12"E	65.99'
L73	S68°38'47"E	33.52'
L74	S41°27'49"E	34.40'
L75	S70°47'39"E	82.89'

BOUNDARY LINE TABLE		
LINE #	DIRECTION	LENGTH
L76	S12°22'11"E	87.85'
L77	S77°01'04"E	24.51'
L78	S50°23'49"E	78.69'
L79	S54°52'01"E	69.87'
L80	S78°13'47"E	171.79'
L81	S74°45'47"E	41.40'
L82	S0°16'08"E	469.20'
L83	S89°58'43"W	1318.90'
L84	S0°13'28"E	1137.22'
L85	S59°32'38"W	318.08'
L86	N30°27'22"W	126.50'
L87	N75°27'22"W	12.02'
L88	N30°27'22"W	50.00'
L89	S59°32'38"W	121.50'
L90	N30°27'22"W	177.50'
L91	N26°23'28"W	75.32'
L92	N16°56'41"W	74.97'
L93	N7°48'52"W	75.30'
L94	S87°16'09"W	310.30'
L95	N0°11'29"W	76.00'
L96	S89°48'31"W	130.00'
L97	N0°11'29"W	5.69'
L98	S89°48'31"W	185.00'
L99	N0°11'29"W	771.75'

SHEET 2 OF 3



**LAMP RYNEARSON  
& ASSOCIATES**

14710 West Dodge Road, Suite 100 402.496.2498 | P  
Omaha, Nebraska 68154-2027 402.496.2730 | F  
www.LRA-Inc.com

DRAWN BY  
EAM

DESIGNED BY

REVIEWED BY  
JLC

PROJECT - TASK NUMBER  
0117115.01-003

DATE  
9-11-18

BOOK AND PAGE

REVISIONS

# S.I.D BOUNDARY EXHIBIT

## LEGAL DESCRIPTION

PART OF THE NORTHWEST QUARTER AND PART OF THE WEST HALF OF THE SOUTHWEST QUARTER OF SECTION 32, TOWNSHIP 14 NORTH, RANGE 11 EAST OF THE 6TH P.M. IN SARPY COUNTY, NEBRASKA DESCRIBED AS FOLLOWS:

COMMENCING AT A 1 1/4" OPEN TOP PIPE LOCATED AT THE SOUTHWEST CORNER OF THE NORTHWEST QUARTER OF SAID SECTION 32;

THENCE NORTH 89°58'43" EAST (BEARINGS REFERENCED TO THE SARPY COUNTY LOW DISTORTION COORDINATE SYSTEM) FOR 60.00 FEET TO THE TRUE POINT OF BEGINNING

THENCE NORTH 00°15'46" WEST FOR 1301.37 FEET ON A LINE 60.00 FEET EAST OF AND PARALLEL TO THE WEST LINE OF THE NORTHWEST QUARTER OF SAID SECTION 32 TO A POINT ON THE CENTERLINE OF NORTH WEHRSPANN CREEK;

THENCE ALONG THE CENTERLINE OF SAID CREEK FOR THE FOLLOWING EIGHTY (80) COURSES:

1. THENCE NORTH 62°27'48" EAST FOR 17.16 FEET;
2. THENCE NORTH 22°06'32" EAST FOR 33.47 FEET;
3. THENCE NORTH 00°32'19" EAST FOR 22.97 FEET;
4. THENCE NORTH 33°14'29" EAST FOR 51.80 FEET;
5. THENCE NORTH 23°58'51" EAST FOR 37.64 FEET;
6. THENCE NORTH 33°16'25" EAST FOR 38.27 FEET;
7. THENCE NORTH 15°30'05" EAST FOR 11.13 FEET;
8. THENCE NORTH 25°06'53" EAST FOR 41.68 FEET;
9. THENCE NORTH 36°22'35" EAST FOR 24.97 FEET;
10. THENCE NORTH 33°46'26" EAST FOR 15.41 FEET;
11. THENCE NORTH 56°20'09" EAST FOR 25.08 FEET;
12. THENCE NORTH 34°53'22" EAST FOR 34.51 FEET;
13. THENCE NORTH 11°21'14" EAST FOR 32.80 FEET;
14. THENCE NORTH 26°56'15" EAST FOR 54.08 FEET;
15. THENCE NORTH 51°06'24" EAST FOR 71.73 FEET;
16. THENCE NORTH 67°53'49" EAST FOR 50.40 FEET;
17. THENCE NORTH 63°28'55" EAST FOR 87.10 FEET;
18. THENCE NORTH 12°12'43" EAST FOR 42.50 FEET;
19. THENCE NORTH 39°38'36" EAST FOR 32.51 FEET;
20. THENCE NORTH 77°32'05" EAST FOR 18.72 FEET;
21. THENCE NORTH 54°11'38" EAST FOR 9.28 FEET;
22. THENCE SOUTH 32°01'09" EAST FOR 29.64 FEET;
23. THENCE SOUTH 34°36'14" EAST FOR 39.49 FEET;
24. THENCE SOUTH 54°38'46" EAST FOR 30.87 FEET;
25. THENCE SOUTH 89°53'51" EAST FOR 28.77 FEET;
26. THENCE NORTH 86°48'26" EAST FOR 21.03 FEET;
27. THENCE SOUTH 32°44'14" EAST FOR 29.84 FEET;
28. THENCE SOUTH 08°40'07" EAST FOR 26.83 FEET;
29. THENCE SOUTH 14°14'13" EAST FOR 36.28 FEET;
30. THENCE SOUTH 46°43'04" EAST FOR 54.12 FEET;
31. THENCE NORTH 88°09'43" EAST FOR 45.36 FEET;
32. THENCE SOUTH 78°06'17" EAST FOR 39.32 FEET;
33. THENCE SOUTH 18°43'33" EAST FOR 64.09 FEET;
34. THENCE SOUTH 41°46'13" EAST FOR 31.16 FEET;
35. THENCE SOUTH 73°51'32" EAST FOR 61.46 FEET;
36. THENCE SOUTH 41°05'06" EAST FOR 60.75 FEET;
37. THENCE SOUTH 79°08'29" EAST FOR 59.85 FEET;
38. THENCE SOUTH 69°21'31" EAST FOR 24.86 FEET;
39. THENCE SOUTH 50°06'45" EAST FOR 60.15 FEET;
40. THENCE SOUTH 64°07'08" EAST FOR 49.75 FEET;
41. THENCE SOUTH 45°02'13" EAST FOR 66.53 FEET;
42. THENCE SOUTH 71°46'50" EAST FOR 40.52 FEET;
43. THENCE SOUTH 61°01'01" EAST FOR 52.84 FEET;
44. THENCE SOUTH 20°51'25" EAST FOR 37.39 FEET;
45. THENCE SOUTH 52°37'49" EAST FOR 18.24 FEET;
46. THENCE NORTH 79°19'54" EAST FOR 67.55 FEET;
47. THENCE SOUTH 83°28'26" EAST FOR 46.30 FEET;

48. THENCE SOUTH 70°57'04" EAST FOR 47.93 FEET;
49. THENCE SOUTH 54°56'47" EAST FOR 66.95 FEET;
50. THENCE SOUTH 55°55'36" EAST FOR 27.94 FEET;
51. THENCE SOUTH 72°28'32" EAST FOR 34.90 FEET;
52. THENCE SOUTH 85°33'45" EAST FOR 62.04 FEET;
53. THENCE SOUTH 41°49'32" EAST FOR 20.76 FEET;
54. THENCE SOUTH 08°26'33" WEST FOR 37.19 FEET;
55. THENCE SOUTH 22°23'26" WEST FOR 20.29 FEET;
56. THENCE SOUTH 60°02'41" WEST FOR 20.58 FEET;
57. THENCE SOUTH 07°12'26" EAST FOR 41.35 FEET;
58. THENCE SOUTH 49°56'54" EAST FOR 80.71 FEET;
59. THENCE SOUTH 22°03'19" EAST FOR 33.20 FEET;
60. THENCE SOUTH 41°11'30" EAST FOR 86.46 FEET;
61. THENCE SOUTH 27°37'33" EAST FOR 48.62 FEET;
62. THENCE SOUTH 46°47'47" EAST FOR 52.97 FEET;
63. THENCE SOUTH 58°58'17" EAST FOR 48.44 FEET;
64. THENCE SOUTH 07°28'28" WEST FOR 16.34 FEET;
65. THENCE SOUTH 41°51'39" EAST FOR 26.57 FEET;
66. THENCE SOUTH 67°29'31" EAST FOR 53.57 FEET;
67. THENCE SOUTH 89°34'46" EAST FOR 68.53 FEET;
68. THENCE SOUTH 63°22'58" EAST FOR 56.50 FEET;
69. THENCE NORTH 83°13'58" EAST FOR 94.05 FEET;
70. THENCE NORTH 72°05'12" EAST FOR 37.88 FEET;
71. THENCE SOUTH 54°36'12" EAST FOR 65.99 FEET;
72. THENCE SOUTH 68°38'47" EAST FOR 33.52 FEET;
73. THENCE SOUTH 41°27'49" EAST FOR 34.40 FEET;
74. THENCE SOUTH 70°47'39" EAST FOR 82.89 FEET;
75. THENCE SOUTH 12°22'11" EAST FOR 87.85 FEET;
76. THENCE SOUTH 77°01'04" EAST FOR 24.51 FEET;
77. THENCE SOUTH 50°23'49" EAST FOR 78.69 FEET;
78. THENCE SOUTH 54°52'01" EAST FOR 69.87 FEET;
79. THENCE SOUTH 78°13'47" EAST FOR 171.79 FEET;
80. THENCE SOUTH 74°45'47" EAST FOR 41.40 FEET TO THE EAST LINE OF THE NORTHWEST QUARTER OF SAID SECTION 32;

THENCE SOUTH 00°16'08" EAST FOR 469.20 FEET ON SAID EAST LINE TO A 1/2" REBAR LOCATED AT THE SOUTHEAST CORNER OF SAID NORTHWEST QUARTER OF SECTION 32;

THENCE SOUTH 89°58'43" WEST FOR 1318.90 FEET TO THE NORTHEAST CORNER OF THE WEST HALF OF THE SOUTHWEST QUARTER OF SAID SECTION 32;

THENCE SOUTH 00°13'28" EAST FOR 1137.22 FEET ON THE EAST LINE OF THE WEST HALF OF THE SOUTHWEST QUARTER OF SAID SECTION 32;

- THENCE SOUTH 59°32'38" WEST FOR 318.08 FEET;
- THENCE NORTH 30°27'22" WEST FOR 126.50 FEET;
- THENCE NORTH 75°27'22" WEST FOR 12.02 FEET;
- THENCE NORTH 30°27'22" WEST FOR 50.00 FEET;
- THENCE SOUTH 59°32'38" WEST FOR 121.50 FEET;
- THENCE NORTH 30°27'22" WEST FOR 177.50 FEET;
- THENCE NORTH 26°23'28" WEST FOR 75.32 FEET;
- THENCE NORTH 16°56'41" WEST FOR 74.97 FEET;
- THENCE NORTH 07°48'52" WEST FOR 75.50 FEET;
- THENCE SOUTH 87°16'09" WEST FOR 310.30 FEET;
- THENCE NORTH 00°11'29" WEST FOR 76.00 FEET;
- THENCE SOUTH 89°48'31" WEST FOR 130.00 FEET;
- THENCE NORTH 00°11'29" WEST FOR 5.69 FEET;
- THENCE SOUTH 89°48'31" WEST FOR 185.00 FEET;
- THENCE NORTH 00°11'29" WEST FOR 771.75 FEET ON A LINE 60.00' EAST OF AND PARALLEL TO THE WEST LINE OF THE WEST HALF OF THE SOUTHWEST QUARTER OF SAID SECTION 32 TO THE POINT OF BEGINNING.

CONTAINS 99.084 ACRES.

SHEET 3 OF 3



### LAMP RYNEARSON & ASSOCIATES

14710 West Dodge Road, Suite 100 402.496.2498 | P  
Omaha, Nebraska 68154-2027 402.496.2730 | F  
www.LRA-Inc.com

DRAWN BY	DESIGNED BY	REVIEWED BY	PROJECT - TASK NUMBER	DATE	BOOK AND PAGE	REVISIONS
EAM		JLC	0117115.01-003	9-11-18		