

COMMERCIAL FEDERAL BUSINESS PARK
69-77

RD 24 1/2
RD 24 1/2
RD 24 1/2
RD 24 1/2
RD 24 1/2

RECEIVED
1982
COMMERCIAL FEDERAL BUSINESS PARK
1982

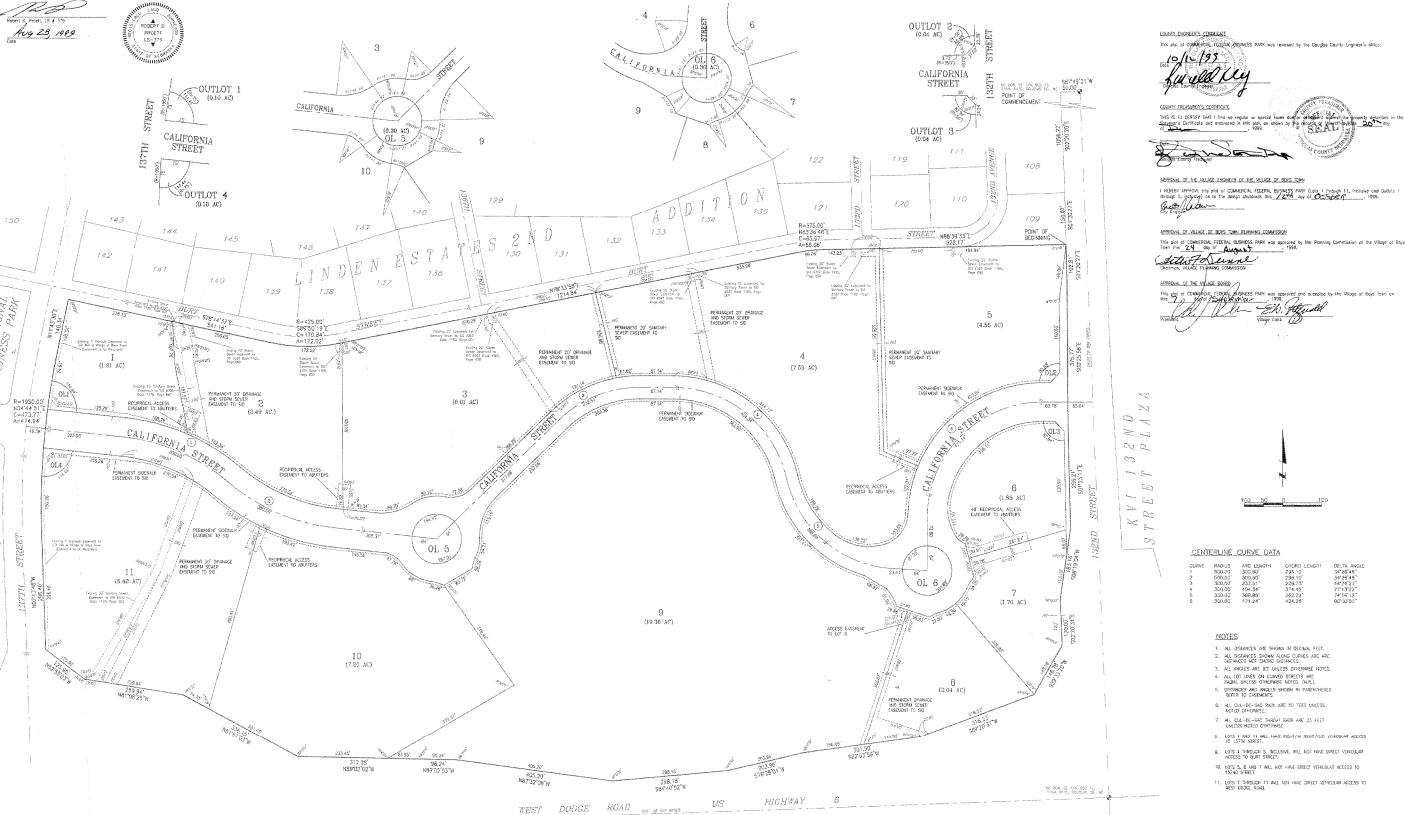
COMMERCIAL FEDERAL BUSINESS PARK

Lots 1 through 11, inclusive and Outlots 1 through 6, inclusive, being a platting of that part of the South Half of Section 13, Township 15 North, Range 11 East of the 6th P.M., Douglas County, Nebraska.

CONSIDER THE RECORD
SECTION 13, TOWNSHIP 15 NORTH, RANGE 11 EAST OF THE 6TH P.M., DOUGLAS COUNTY, NEBRASKA
BEING PART OF THE COMMERCIAL FEDERAL BUSINESS PARK, PLAT NO. 69-77, AS SHOWN ON THE PLAT THEREOF AND AS BEING MORE FULLY DESCRIBED IN THE RECORD THEREOF.

CONSIDER THE RECORD
SECTION 13, TOWNSHIP 15 NORTH, RANGE 11 EAST OF THE 6TH P.M., DOUGLAS COUNTY, NEBRASKA
BEING PART OF THE COMMERCIAL FEDERAL BUSINESS PARK, PLAT NO. 69-77, AS SHOWN ON THE PLAT THEREOF AND AS BEING MORE FULLY DESCRIBED IN THE RECORD THEREOF.

COMMISSIONER OF REVENUE
STATE OF NEBRASKA
COUNTY OF DOUGLAS
I, the undersigned, Commissioner of Revenue, do hereby certify that the above described plat and description of land, together with the map thereon, are in accordance with the laws of Nebraska and that the same are hereby approved and recorded in the public records of this office.
Witness my hand and the seal of this office at Omaha, Nebraska, this 1st day of August, 1982.



LEGAL OPINION
I hereby certify that the plat and description of land, together with the map thereon, are in accordance with the laws of Nebraska and that the same are hereby approved and recorded in the public records of this office.
WITNESSED my hand and the seal of this office at Omaha, Nebraska, this 1st day of August, 1982.

CENTRAL CURVE DATA

CHORD BEARING	CHORD LENGTH	DELTA ANGLE
S 128° 11' 00" W	284.17	30° 44' 41"
N 0° 00' 00" E	284.17	30° 44' 41"
S 128° 11' 00" W	284.17	30° 44' 41"
S 128° 11' 00" W	284.17	30° 44' 41"
S 128° 11' 00" W	284.17	30° 44' 41"
S 128° 11' 00" W	284.17	30° 44' 41"

NOTES

- ALL DIMENSIONS ARE SHOWN IN DECIMAL FEET.
- ALL DIMENSIONS SHOWN BEING LEGAL ARE AC.
- ALL RIGHTS ARE BY LIMITED EASEMENT NOTES.
- ALL DIMENSIONS ARE SHOWN IN DECIMAL FEET.
- ALL DIMENSIONS ARE SHOWN IN DECIMAL FEET.
- ALL DIMENSIONS ARE SHOWN IN DECIMAL FEET.
- ALL DIMENSIONS ARE SHOWN IN DECIMAL FEET.
- ALL DIMENSIONS ARE SHOWN IN DECIMAL FEET.
- ALL DIMENSIONS ARE SHOWN IN DECIMAL FEET.
- ALL DIMENSIONS ARE SHOWN IN DECIMAL FEET.
- ALL DIMENSIONS ARE SHOWN IN DECIMAL FEET.

lamp, ryneason & associates, inc.
PLAT
1 of 1

job number	1500-11
book	002
page	001
date	AUG 30, 1982

drawn by
designed by
checked by
reviewed by
revisions
DATE PREPARED
1982/08/31
DRAWN BY
LAMP, RYNEASON & ASSOCIATES, INC.
DOUGLAS COUNTY, NEBRASKA