

Check For Record 6-19-96 at 10:30 AM
Instrument # 96-11983
Map 1. County Register of Deeds - Sully Co., IA

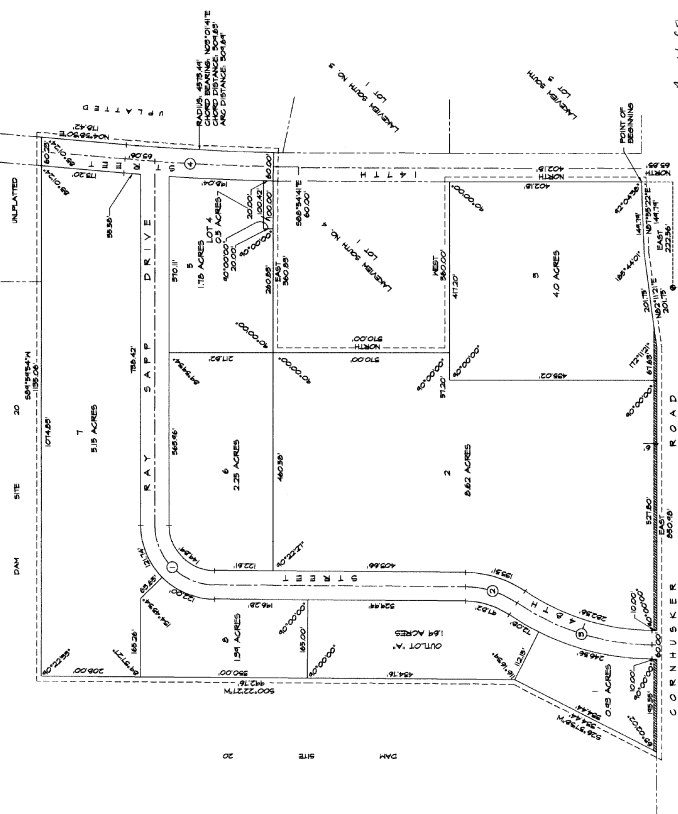
96-11983

LAKEVIEW SOUTH NO. 5

County: IA
Verify: ✓
D.E.: ✓
Price: \$22,000
Cash:
Orig:

LOTS 1 - 8 INCLUSIVE AND OUTLOT 'A'

BEING A PLATING OF PART OF THE SOUTH 1/2 OF THE SE 1/4 OF SECTION 28, T4N, R18E OF THE 8TH PM, SULLY COUNTY, NEBRASKA.



CURVE	DELTA	TANGENT	LENGTH	RADIUS
①	84°12'21"	126.00'	196.81'	128.82'
②	84°10'38"	94.00'	138.80'	114.42'
③	84°12'02"	198.00'	200.80'	448.18'
④	25°12'28"	199.88'	211.9'	460.54'

LEGAL DESCRIPTION

HEREBY CERTIFY THAT I HAVE MADE A FOREMAN'S SURVEY OF THE EIGHT (8) LOTS DESCRIBED HEREIN AND THAT THE SAME WOULD BE AVAILABLE TO ALL CO-EQUAL AND EQUAL RIGHTS PERSONS WHO MAY HAVE AN INTEREST THEREIN. I HAVE ALSO MADE A FOREMAN'S SURVEY OF THE OUTLOT 'A' DESCRIBED HEREIN AND THAT THE SAME WOULD BE AVAILABLE TO ALL CO-EQUAL AND EQUAL RIGHTS PERSONS WHO MAY HAVE AN INTEREST THEREIN. AS THE FOREMAN'S SURVEY IS MADE TO THE CENTER OF THE SECTION AND THE CENTER OF THE SECTION IS THE CENTER OF THE SECTION, THE FOREMAN'S SURVEY IS MADE TO THE CENTER OF THE SECTION AND THE CENTER OF THE SECTION IS THE CENTER OF THE SECTION. THE FOREMAN'S SURVEY IS MADE TO THE CENTER OF THE SECTION AND THE CENTER OF THE SECTION IS THE CENTER OF THE SECTION. THE FOREMAN'S SURVEY IS MADE TO THE CENTER OF THE SECTION AND THE CENTER OF THE SECTION IS THE CENTER OF THE SECTION.

DATE: APRIL 15, 1996

DEFINITION

NOTING THAT THE FOREMAN'S SURVEY WAS MADE WITHIN THE SEVEN (7) DAYS AFTER THE DEATH OF THE SAID DECEASED PERSON, AND THAT THE SAID FOREMAN'S SURVEY WAS MADE TO THE CENTER OF THE SECTION AND THE CENTER OF THE SECTION IS THE CENTER OF THE SECTION. THE FOREMAN'S SURVEY IS MADE TO THE CENTER OF THE SECTION AND THE CENTER OF THE SECTION IS THE CENTER OF THE SECTION. THE FOREMAN'S SURVEY IS MADE TO THE CENTER OF THE SECTION AND THE CENTER OF THE SECTION IS THE CENTER OF THE SECTION.

DEED INSTRUMENT

BY: *Bill Sapp*

BY: *Bill Sapp*

BY: *Bill Sapp*

BY: *Bill Sapp*

BY: *Bill Sapp*

BY: *Bill Sapp*

BY: *Bill Sapp*

BY: *Bill Sapp*

BY: *Bill Sapp*

BY: *Bill Sapp*

BY: *Bill Sapp*

BY: *Bill Sapp*

BY: *Bill Sapp*

BY: *Bill Sapp*

BY: *Bill Sapp*

BY: *Bill Sapp*

BY: *Bill Sapp*

BY: *Bill Sapp*

BY: *Bill Sapp*

BY: *Bill Sapp*

BY: *Bill Sapp*

BY: *Bill Sapp*

BY: *Bill Sapp*

BY: *Bill Sapp*

BY: *Bill Sapp*

BY: *Bill Sapp*

BY: *Bill Sapp*

BY: *Bill Sapp*

BY: *Bill Sapp*

BY: *Bill Sapp*

BY: *Bill Sapp*

BY: *Bill Sapp*

BY: *Bill Sapp*

BY: *Bill Sapp*

BY: *Bill Sapp*

BY: *Bill Sapp*

BY: *Bill Sapp*

BY: *Bill Sapp*

BY: *Bill Sapp*

BY: *Bill Sapp*

BY: *Bill Sapp*

BY: *Bill Sapp*

BY: *Bill Sapp*

BY: *Bill Sapp*

BY: *Bill Sapp*

BY: *Bill Sapp*

BY: *Bill Sapp*

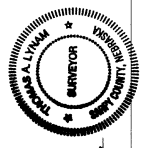
BY: *Bill Sapp*



LAKEVIEW SOUTH NO. 5
FINAL PLAT
APRIL 15, 1996
AS SHOWN

CONSULTING ENGINEERS & LAND SURVEYORS
JONPSON, DRESSSEN & DORNER, INC.
1603 200 - 8800
OMAHA, NE 68104

544-126
AS4426A.DWG



APPROVAL OF SULLY COUNTY SURVEYOR
COUNTY SURVEYORS THIS 15TH DAY OF APRIL, 1996.

APPROVAL OF SULLY COUNTY BUILDING INSPECTOR
COUNTY BUILDING INSPECTOR THIS 15TH DAY OF APRIL, 1996.

APPROVAL OF SULLY COUNTY PLANNING COMMISSION
PLANNING COMMISSION THIS 15TH DAY OF APRIL, 1996.

APPROVAL OF SULLY COUNTY BOARD OF COMMISSIONERS
COUNTY BOARD OF COMMISSIONERS THIS 15TH DAY OF APRIL, 1996.

APPROVAL OF SULLY COUNTY BOARD OF SUPERVISORS
COUNTY BOARD OF SUPERVISORS THIS 15TH DAY OF APRIL, 1996.

APPROVAL OF SULLY COUNTY BOARD OF EQUALIZATION
COUNTY BOARD OF EQUALIZATION THIS 15TH DAY OF APRIL, 1996.

APPROVAL OF SULLY COUNTY BOARD OF HEALTH
COUNTY BOARD OF HEALTH THIS 15TH DAY OF APRIL, 1996.

APPROVAL OF SULLY COUNTY BOARD OF SOCIAL SERVICES
COUNTY BOARD OF SOCIAL SERVICES THIS 15TH DAY OF APRIL, 1996.

APPROVAL OF SULLY COUNTY BOARD OF EDUCATION
COUNTY BOARD OF EDUCATION THIS 15TH DAY OF APRIL, 1996.

APPROVAL OF SULLY COUNTY BOARD OF LABOR RELATIONS
COUNTY BOARD OF LABOR RELATIONS THIS 15TH DAY OF APRIL, 1996.

APPROVAL OF SULLY COUNTY BOARD OF DEVELOPMENT
COUNTY BOARD OF DEVELOPMENT THIS 15TH DAY OF APRIL, 1996.

APPROVAL OF SULLY COUNTY BOARD OF INVESTMENT
COUNTY BOARD OF INVESTMENT THIS 15TH DAY OF APRIL, 1996.