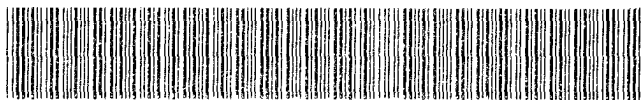




DEED

2005102925



AUG 22 2005 08:50 P 7

Doc
Stamp Tax

8.22.05

Date

\$4.44

By CL

Received - DIANE L. BATTIATO
Register of Deeds, Douglas County, NE
8/22/2005 08:50:11.31



2005102925

THIS PAGE INCLUDED FOR INDEXING
PAGE DOWN FOR BALANCE OF INSTRUMENT

Deed FEE 38⁵⁰ New-MC-23797
FB 01-60000-012
7/7 BKP 10-15-11^{EW} C/O COMP PA
DEL _____ SCAN _____ FV _____

RETURN: Thompson, Dreesen & Dorner, Inc.
10835 Old Mill Rd.
Omaha, Ne. 68154

LOTS 1 TO 5, INCLUSIVE, AND OUTLOT A
BEING A PLATTING OF PART OF THE NW 1/4 OF THE NW 1/4 OF SECTION 10, T15N, R11E
OF THE 6th P.M., DOUGLAS COUNTY, NEBRASKA.



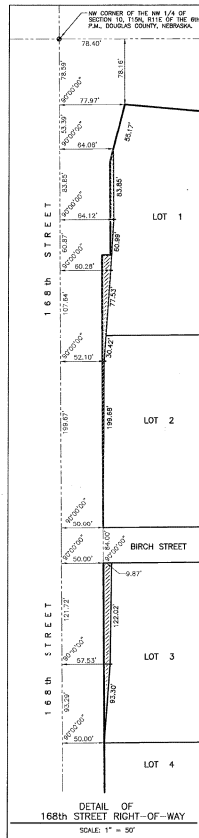
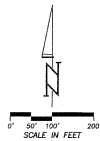
1. DIRECT VEHICULAR ACCESS WILL NOT BE ALLOWED ONTO 168th STREET FROM LOTS 1, 2, 3, AND 4.
2. DIRECT VEHICULAR ACCESS WILL NOT BE ALLOWED ONTO WEST MAPLE ROAD FROM LOTS 1 AND 5.
3. BRUSH STREET ACCESS TO 168th STREET WILL BE LIMITED TO RIGHT-IN, RIGHT-OUT TURNING MOVEMENTS.
4. DIMENSIONS AND ANGLES IN PARENTHESES PERTAIN TO EASEMENTS.

PROPERTY LINE CURVE DATA				
CURVE	DELTA	TANGENT	LENGTH	RADIUS
1	20°49'00"	75.31'	148.98'	410.00'
2	20°49'00"	87.62'	173.30'	477.00'
3	47°29'36"	16.50'	31.08'	37.50'

 INGRESS AND EGRESS EASEMENT OVER
OUTLOT "A" (SEE RECORDED INSTRUMENT)

SEWER AND DRAINAGE EASEMENT GRANTED TO SANITARY
AND IMPROVEMENT DISTRICT NO. 470 AND THE CITY OF
OMAHA, NEBRASKA. (SEE RECORDED INSTRUMENT)

SEWER AND DRAINAGE EASEMENT GRANTED TO SANITARY
AND IMPROVEMENT DISTRICT NO. 478 AND THE CITY OF
OMAHA, NEBRASKA.-(SEE RECORDED INSTRUMENT)



SURVEYOR'S CERTIFICATE

[illegible]

MAY 1, 2005

DEDICATION

[illegible]

HEREIN GRANTED. MAPLE VALLEY, L.L.C.,
A NEBRASKA LIMITED LIABILITY COMPANY
BY: *Kenneth J. Hagen*
KENNETH J. HAGEN, GR., MANAGING MEMBER

PINNACLE BANK
BY: *Douglas M. Ayer*
DOUGLAS M. AYER, EXECUTIVE VICE-PRESIDENT

ACKNOWLEDGEMENT OF NOTARY
STATE OF NEBRASKA }
COUNTY OF DOUGLAS } s.s.
THE FOREGOING DEDICATION WAS ACKNOWLEDGED BEFORE ME THIS 18th DAY OF MAY, 2005, BY KENNETH J. HAGEN, JR.,
MANAGING MEMBER OF MAPLE VALLEY, L.L.C., A NEBRASKA LIMITED LIABILITY COMPANY, ON BEHALF OF SAID COMPANY.

ACKNOWLEDGEMENT OF NOTARY
STATE OF NEBRASKA)
COUNTY OF DOUGLAS) s.s.

THE FOREGOING DESIGNATION WAS REVERSED ONLY BECAUSE WE THIS _____ DAY OF _____, 2000, BY _____ A. KIRK, CASHIER
VICE-PRESIDENT OF PINNACLE BANK, ON BEHALF OF SAID BANK.

COUNTY TREASURER'S CERTIFICATE
THIS IS TO CERTIFY THAT I FIND NO REGULAR OR SPECIAL TAXES, DUES OR DEBTS DUE AGAINST THE PROPERTY DESCRIBED IN THE SUPERVISOR'S CERTIFICATE AND ENDORSED WITHIN THIS DEED.

01/26/2005 2005
DEPUTY
SEAL
NICHOLAS COUNTY TREASURER

APPROVAL OF CITY ENGINEER
I HEREBY APPROVE THIS PLAT OF MAPLE VALLEY ON THIS 17 DAY OF APRIL, 2006.

I HEREBY CERTIFY THAT ADEQUATE PROVISIONS HAVE BEEN MADE FOR COMPLIANCE WITH CHAPTER 53 OF THE OMAHA MUNICIPAL CODE.

8-19-05
DATE

Michael Anderson
CITY ENGINEER

APPROVAL OF OMAHA CITY PLANNING BOARD
THIS PLAT OF MAPLE VALLEY WAS APPROVED BY THE OMAHA CITY PLANNING BOARD THIS 6th DAY OF April, 2005.
Angie L. Thomas

APPROVAL OF OMAHA CITY COUNCIL
THIS PLAT OF MAPLE VALLEY WAS APPROVED AND ACCEPTED BY THE OMAHA CITY COUNCIL THIS 19th day of July, 2005.

Mike Jahany
MAYOR

David C. W. Juhl
PRESIDENT

[Signature]
CITY CLERK

REVIEW BY DOUGLAS COUNTY ENGINEER

THIS PLAT OF MAPLE VALLEY WAS REVIEWED BY THE DOUGLAS COUNTY ENGINEER'S OFFICE.

[Seal of Douglas County, Minnesota]

11-10-68

DATE: 5/6/05

NEBRASKA

SCALE:	1" = 100'
DATE:	MAY 1, 2005
DRAWN BY:	ELR
CHECKED BY:	JOW
REVISION:	

--	--

ALLEY	FINAL PLAT
-------	------------

TABLE V	
---------	--

MA

--	--

INC.	
ORS	
154	
35	
61	

DORNER,
and Survey
NEBRASKA 68
402)330-666
WWW.TDSCO.CO

HEESSEN & ASSOCIATES, INC.
Engineers & Architects
1000 N. OMAHA AVE.
SIOUX FALLS, SD 57104
605/336-1100 FAX: 605/336-1101
WWW.HEESSEN.COM WEB: 605/336-1100

PERSON, DRIVING
Engineering
 OLD MILL ROAD
 (402) 330-8800
 E-MAIL: TDMAIL@TDS

2
THOMAS
Consultant
10836
TELL
EMAIL

2

1005 101

1295-101
A1295101A.DWG