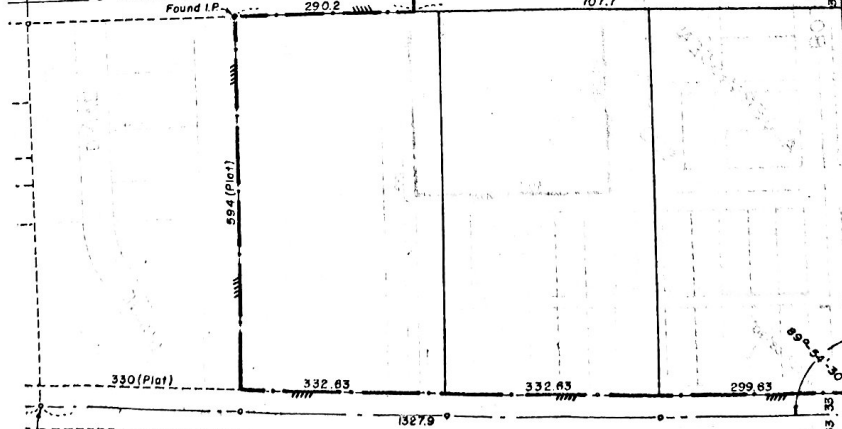
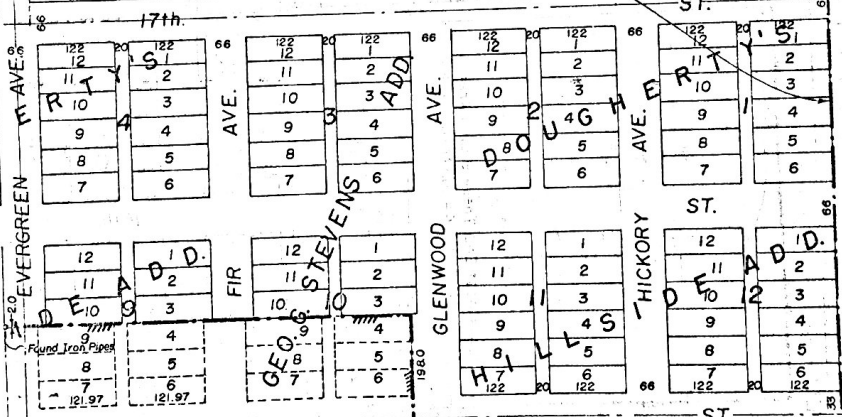


North Line N.W. 1/4 Sec. 26

2519.9

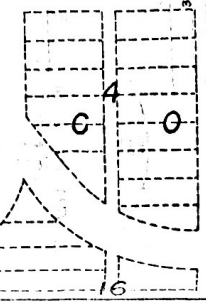
Limits of annexed areas shown thus

Note: All Lots in These Additions Are:
122 ft. x 44 ft. (Plat)
122 ft. x 43.89 ft. (Actual)



X in Concrete
0.55 ft. South
Of Tangent Line

STATE OF NEBRASKA, County of Saline
 Entered in numerical index and filed for record
 1 day of December 19 1922 at 1:00 o'clock P.M.
 and recorded in Book 126 of Deeds Page 8
 R. J. [Signature] County Clerk



PLAT
ANNEXATION TO THE CITY OF CRETE, NEBRASKA
OF PART OF THE S.W. 1/4 OF S. 26 & NE. 1/4 OF S. 35, T8N, R4E
6th P.M. IN SALINE COUNTY, NEBRASKA

SURVEYOR'S CERTIFICATE

I, Bruce L. Gilmore, a competent Registered Land Surveyor of Nebraska hereby certify that I have accurately surveyed the tract described below, in the SW 1/4 of Sec. 26 & NE 1/4 of Sec. 35, T8N, R4E, Saline County, Nebraska, and that the above and foregoing is a true and correct survey thereof and that the lots, blocks, streets, avenues, easements, alleys, and commons and other grounds are well and accurately staked off and marked and correctly designated and shown on the above and foregoing survey.

Dated this 6th day of November, 1972

Bruce L. Gilmore
 Bruce L. Gilmore, Nebr. L.S. No. 96



LEGAL DESCRIPTIONS

Beginning at a point 33 ft. North and 33 ft. West of the S.E. corner of the S.W. 1/4 of Section 26, T8N, R4E of the 6th P.M., Saline County, Nebraska; thence North a distance of 2601.6 ft. to a point 33 ft. West of the N.E. corner of said S.W. 1/4; thence West 2319.95 ft. along the North line of said S.W. 1/4; thence South 500.25 ft. to a point on the North line of Sack's Second Addition, said point being 335.3 ft. East of the West line of said S.W. 1/4; thence East along the North line of said Sack's Second Addition to the N.E. corner of Sack's Second Addition; thence South along the East line of said Sack's Second Addition to the S.E. corner of Sack's Second Addition; thence West along the South line of said Sack's Second Addition to the East R.O.W. line of Boswell Avenue, said point being 45.75 ft. East of the West line of said S.W. 1/4; thence South 660.95 ft. along the East line of Boswell Avenue to the North line of 15th Street; thence East 299.0 ft. along the North line of 15th Street to the N.E. corner of Algermissen Subdivision; thence South 332.0 ft. along the East side of said Algermissen Subdivision to the centerline of 14th Street, said point being 328.6 ft. North of the South line of the said S.W. 1/4; thence East along the centerline of 14th Street a distance of 313.4 ft. to the West line of Code Avenue; thence North along the West line of Code Avenue a distance of 332.0 ft. to the North line of the South 1/2 of the S.W. 1/4 of said S.W. 1/4; thence West along the said North line of the said South 1/2 a distance of 16.5 ft.; thence North a distance of 165.0 ft. to the North line, extended, of Lot 9 Block 7 of A. D. Root & Co. Addition; thence East a distance of 1319.76 ft. to a point; thence South a distance of 198.0 ft. to a point; thence West parallel to the North line of the South 1/4 of the said S.W. 1/4 to a point 33 ft. South of the N.W. corner of the West 1/2 of S.W. 1/4 of S.E. 1/4 of S.W. 1/4 of said Section 26; thence South along the West line of the S.E. 1/4 of said S.W. 1/4 a distance of 594.25 ft. to the North line of 13th Street, said point being 33 ft. North of the South line of said S.W. 1/4; thence East parallel to and 33 ft. North of said South line of the S.W. 1/4 a distance of 964.9 ft. to the point of beginning.

Starting at a point 66 ft. North of the N.W. corner of Block 7, College Park Addition in the N.E. 1/4, Section 35, T8N, R4E of the 6th P.M., Saline County, Nebraska; thence East parallel to the North line of said N.E. 1/4 a distance of 800.0 ft. to a point 66 ft. North of the N.W. corner of Block 9 of said College Park Addition; thence South along the West line of Block 9 as extended North and South a distance of 364.52 ft. to a point 34 ft. South of the S.W. corner of said Block 9; thence West and Southwesterly along the centerline of Whittier Avenue to a point 34 ft. South of the S.W. corner of said Block 7; thence North along the West line of said Block 7, a distance of 453.7 ft. to the point of beginning.

Iron Bar (Found), 0.25 ft. East of Tangent Line @ is Centerline of 15th St. From West Line At Glenwood Ave. To Code Ave., Centerline of 15th St. From Iris Ave to Glenwood Ave. is 0.91 ft. South of Existing Iron Bar.

SE Corner of SW 1/4 Sec 26 & NW Corner of NE 1/4 Sec 35
 Point of beginning

