

drawn by	
designed by	
reviewed by	
revisions	
path/line name	
reference	

AK-SAR-BEN BUSINESS & EDUCATION CAMPUS REPLAT 1
 1470 West Dodge Road, Suite 100
 Omaha, Nebraska 68104-2020
 PH 402.498.2730
 FAX 402.498.2730

Lamp, Rynearson & Associates, Inc.
 Surveyors
 Planners
 Engineers

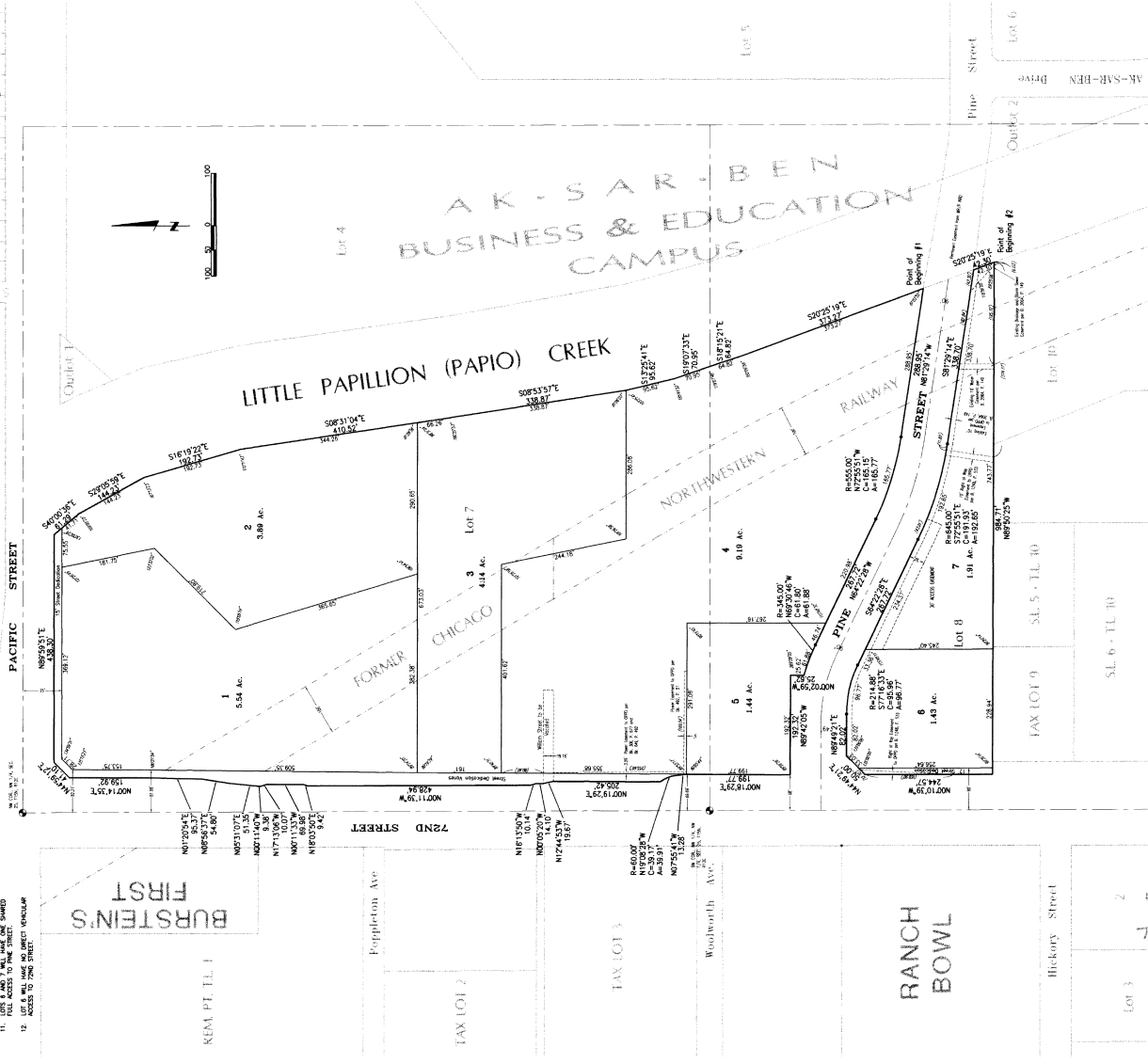
job number	00007-00-003
book	
page	
date	JULY 5, 2000
sheet	1 of 1

AK-SAR-BEN BUSINESS & EDUCATION CAMPUS REPLAT 1

Lots 1 through 7, inclusive, being a platting of part of the Northwest Quarter of Section 25, Township 15 North, Range 12 East of the 6th P.M., Douglas County, Nebraska and a replatting of Lots 7 and 8, AK-SAR-BEN BUSINESS & EDUCATION CAMPUS, a subdivision, as surveyed, platted and recorded in Douglas County, Nebraska.



ELM WOOD GARDENS



- NOTES**
1. ALL DISTANCES ARE SHOWN IN DECIMAL FEET.
 2. ALL DISTANCES SHOWN ALSO SURVEYED AND ARE SURVEYED BY THE SURVEYOR.
 3. INTERSECTIONS ARE 90° UNLESS OTHERWISE NOTED.
 4. ALL OF LINES ON CHANGED STREETS ARE TO BE CONSIDERED AS 20 FEET WIDE UNLESS OTHERWISE NOTED.
 5. DISTANCES ARE SHOWN TO CORNERS.
 6. CORNER MARKERS ARE TO BE SET AS SHOWN.
 7. LOTS 1 THROUGH 4, INCLUDING ALL HAVE ACCESS TO 2ND STREET.
 8. LOTS 5, 6, 7, 8, INCLUDING ALL HAVE ACCESS TO PACIFIC STREET.
 9. LOT 5, 6, 7, 8, INCLUDING ALL HAVE ACCESS TO 2ND STREET.
 10. LOT 5, 6, 7, 8, INCLUDING ALL HAVE ACCESS TO PACIFIC STREET.
 11. LOT 5, 6, 7, 8, INCLUDING ALL SHOWN WITH ACCESS TO 2ND STREET.
 12. LOT 5, 6, 7, 8, INCLUDING ALL SHOWN WITH ACCESS TO PACIFIC STREET.

LEGAL DESCRIPTION

THESE LOTS ARE PART OF THE NORTHWEST QUARTER OF SECTION 25, TOWNSHIP 15 NORTH, RANGE 12 EAST OF THE 6TH P.M., DOUGLAS COUNTY, NEBRASKA, AS SURVEYED AND PLATTED IN DEED 3081 04255, RECORDED IN THE PUBLIC RECORDS OF DOUGLAS COUNTY, NEBRASKA, AND ARE ALSO PART OF THE AK-SAR-BEN BUSINESS & EDUCATION CAMPUS, AS SURVEYED AND PLATTED IN DEED 3081 04255, RECORDED IN THE PUBLIC RECORDS OF DOUGLAS COUNTY, NEBRASKA.

ACKNOWLEDGMENT OF INTERESTS

STATE OF NEBRASKA }
 COUNTY OF DOUGLAS }
 I, the undersigned, being the duly qualified and qualified public official, do hereby certify that the foregoing platting of the above described premises has been duly approved and recorded in the public records of Douglas County, Nebraska, in accordance with the provisions of the laws of the State of Nebraska relating to the recording of plats of land.

ACKNOWLEDGMENT OF INTERESTS

STATE OF NEBRASKA }
 COUNTY OF DOUGLAS }
 I, the undersigned, being the duly qualified and qualified public official, do hereby certify that the foregoing platting of the above described premises has been duly approved and recorded in the public records of Douglas County, Nebraska, in accordance with the provisions of the laws of the State of Nebraska relating to the recording of plats of land.

ACKNOWLEDGMENT OF INTERESTS

STATE OF NEBRASKA }
 COUNTY OF DOUGLAS }
 I, the undersigned, being the duly qualified and qualified public official, do hereby certify that the foregoing platting of the above described premises has been duly approved and recorded in the public records of Douglas County, Nebraska, in accordance with the provisions of the laws of the State of Nebraska relating to the recording of plats of land.

ACKNOWLEDGMENT OF INTERESTS

STATE OF NEBRASKA }
 COUNTY OF DOUGLAS }
 I, the undersigned, being the duly qualified and qualified public official, do hereby certify that the foregoing platting of the above described premises has been duly approved and recorded in the public records of Douglas County, Nebraska, in accordance with the provisions of the laws of the State of Nebraska relating to the recording of plats of land.

ACKNOWLEDGMENT OF INTERESTS

STATE OF NEBRASKA }
 COUNTY OF DOUGLAS }
 I, the undersigned, being the duly qualified and qualified public official, do hereby certify that the foregoing platting of the above described premises has been duly approved and recorded in the public records of Douglas County, Nebraska, in accordance with the provisions of the laws of the State of Nebraska relating to the recording of plats of land.

ACKNOWLEDGMENT OF INTERESTS

STATE OF NEBRASKA }
 COUNTY OF DOUGLAS }
 I, the undersigned, being the duly qualified and qualified public official, do hereby certify that the foregoing platting of the above described premises has been duly approved and recorded in the public records of Douglas County, Nebraska, in accordance with the provisions of the laws of the State of Nebraska relating to the recording of plats of land.