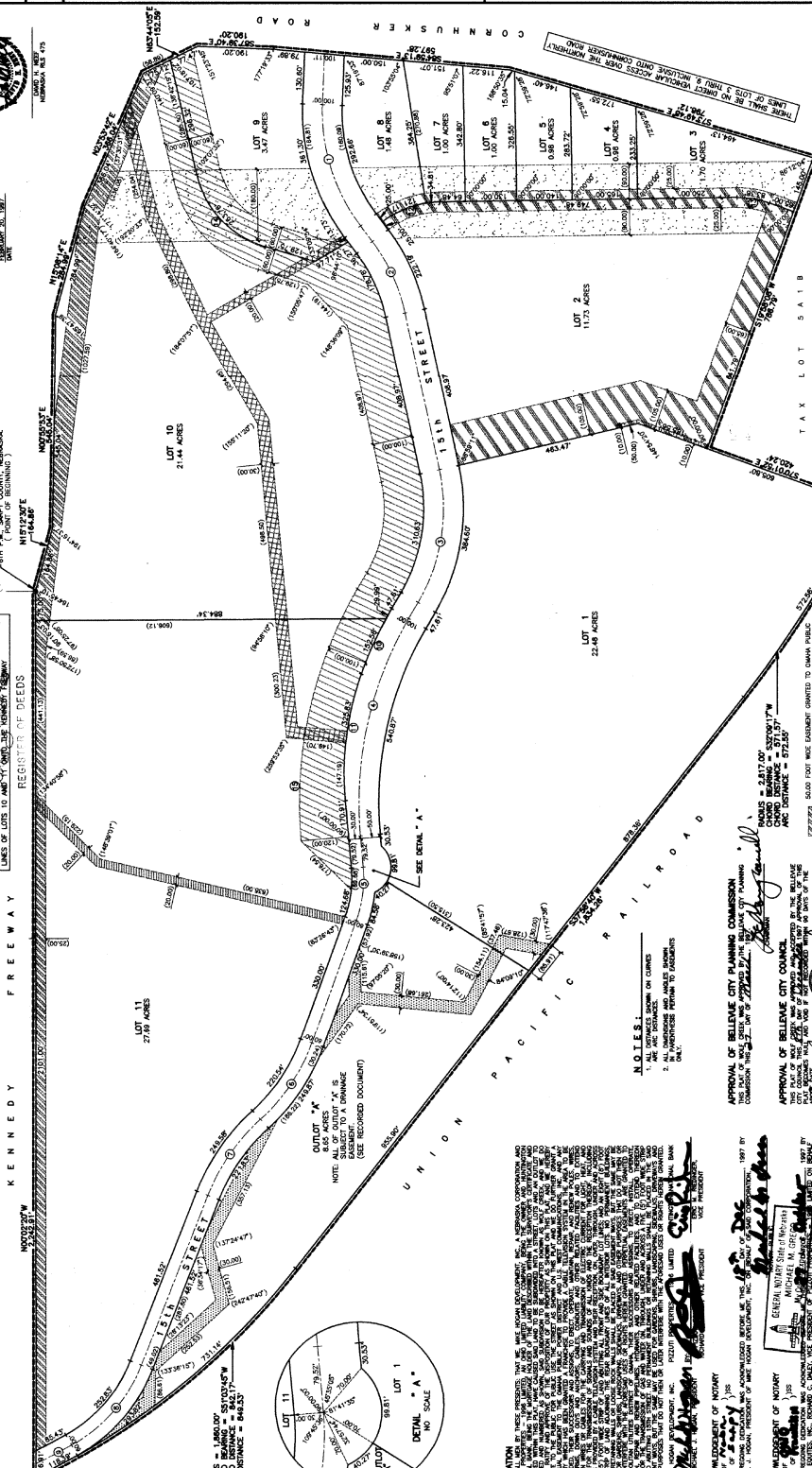
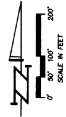


WOLF CREEK

LOTS 1 THRU 11, INCLUSIVE AND OUTLOT "A"
 BEING A PLATING OF PART OF THE NE 1/4 OF SECTION 27, T14N, R15E OF THE 6TH P.M., SAMPSON COUNTY,
 NEBRASKA TOGETHER WITH THAT PART OF THE SE 1/4 OF SAID SECTION 27 LYING NORTHWESTERLY OF THE
 UNION PACIFIC RAILROAD RIGHT-OF-WAY.

97-28695
 FILED SAMPSON CO. NE.
 INSTRUMENT NUMBER
 97-028695-
 97 DEC 19 AM 9:55

SEPARATORS CONTAINING
 HEREBY CERTIFY THAT I HAVE EXAMINED THE ORIGINAL RECORDS OF THE SAMPSON COUNTY REGISTER OF DEEDS
 AND HAVE FOUND THAT THE FOREGOING INSTRUMENT IS A TRUE AND CORRECT COPY OF THE ORIGINAL RECORDS
 AND THAT THE SAME HAS BEEN FILED IN THE PUBLIC RECORDS OF SAID COUNTY AND STATE.
 REGISTER OF DEEDS
 SAMPSON COUNTY, NEBRASKA



TAX LOT SAIB

LOT	ANALYSIS	AMOUNT	NO.	LENGTH	QUALITY
1	107.22	308.89	37	371.23	371.23
2	138.19	343.61	38	343.61	343.61
3	433.02	343.61	39	343.61	343.61
4	433.02	343.61	40	343.61	343.61
5	433.02	343.61	41	343.61	343.61
6	433.02	343.61	42	343.61	343.61
7	433.02	343.61	43	343.61	343.61
8	433.02	343.61	44	343.61	343.61
9	433.02	343.61	45	343.61	343.61
10	433.02	343.61	46	343.61	343.61
11	433.02	343.61	47	343.61	343.61
12	433.02	343.61	48	343.61	343.61
13	433.02	343.61	49	343.61	343.61
14	433.02	343.61	50	343.61	343.61
15	433.02	343.61	51	343.61	343.61

NOTES:
 1. ALL DIMENSIONS SHOWN ON CORNERS
 2. ALL DIMENSIONS SHOWN ON LINES
 3. ALL DIMENSIONS SHOWN ON LINES
 4. ALL DIMENSIONS SHOWN ON LINES

APPROVAL OF BELLEVUE CITY PLANNING COMMISSION
 APPROVAL OF BELLEVUE CITY COUNCIL
 APPROVAL OF BELLEVUE CITY CLERK
 APPROVAL OF BELLEVUE CITY REGISTER OF DEEDS
 APPROVAL OF BELLEVUE CITY REGISTER OF DEEDS



DEDICATION
 THE STATE OF NEBRASKA, COUNTY OF SAMPSON, BEING THE PRESIDENT OF THE SAMPSON COUNTY BOARD OF SUPERVISORS, DO HEREBY CERTIFY THAT THE FOREGOING PLAT IS A TRUE AND CORRECT COPY OF THE ORIGINAL RECORDS OF SAID COUNTY AND STATE.

ACKNOWLEDGMENT OF NOTARY
 STATE OF NEBRASKA, COUNTY OF SAMPSON, BEING THE PRESIDENT OF THE SAMPSON COUNTY BOARD OF SUPERVISORS, DO HEREBY CERTIFY THAT THE FOREGOING PLAT IS A TRUE AND CORRECT COPY OF THE ORIGINAL RECORDS OF SAID COUNTY AND STATE.

County
 Verify
 DE
 2K
 Cash
 Charge
 25 STAMPERS
 COPY

TAXES ASSESSED AND LEVIED FOR THE
 CURRENT YEAR ARE NEITHER DUE NOR
 PAID. TREASURERS CERTIFICATION
 IS ONLY VALID UNTIL DECEMBER 30TH
 OF THIS YEAR.



THOMPSON, DRESSER & DORNER, INC.
 Consulting Engineers & Land Surveyors
 1925 OLD MIL ROAD
 OMAHA, NE 68154
 (402) 330 - 8860

161-122
 A161122A.DWG