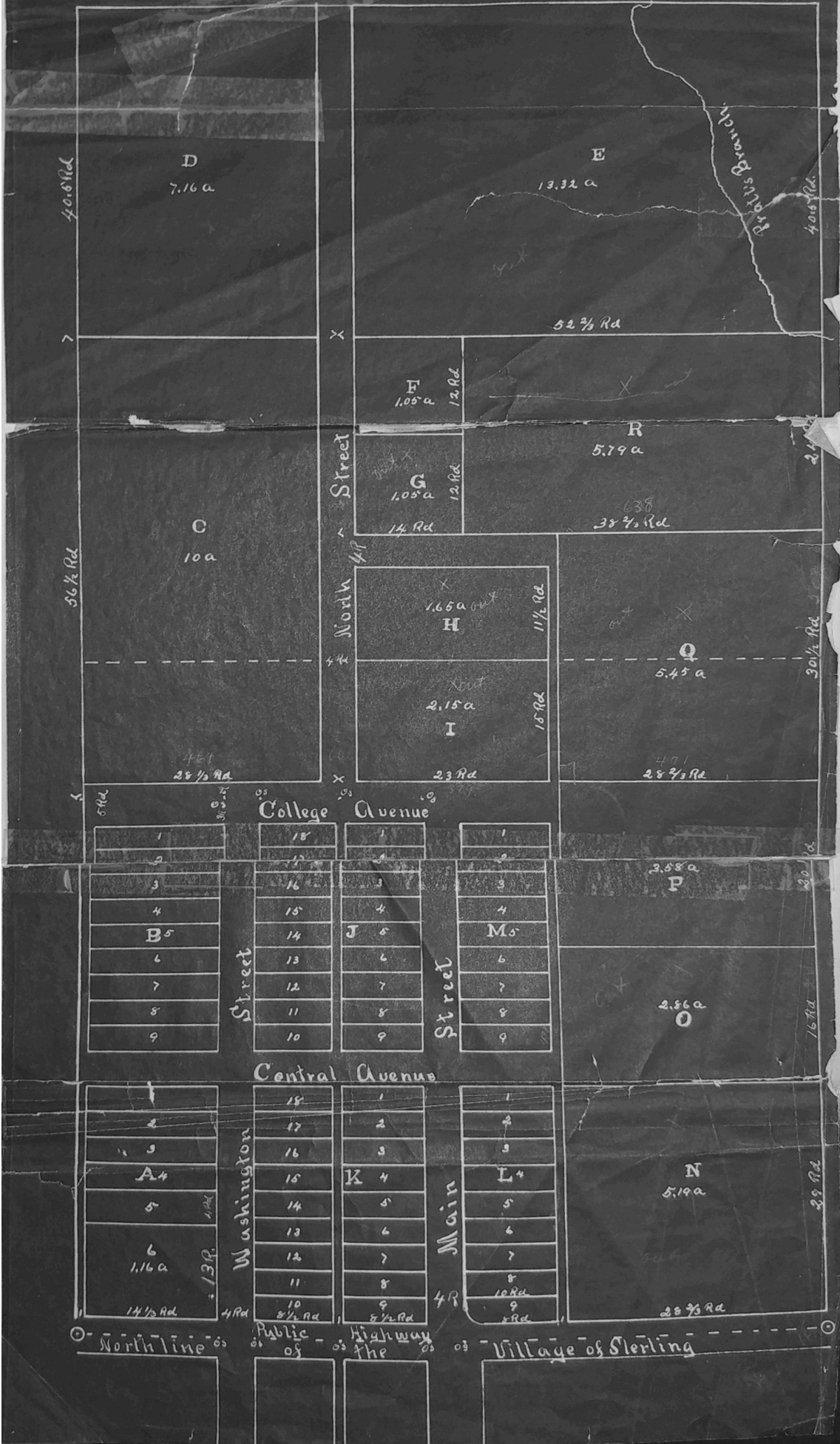


# College Subdivision

The West half of Southeast quarter of Section Twenty-three,  
 in Township Six, north, of Range Nine, east, in Johnson  
 County, Nebraska. □ Proposed Addition to Sterling.



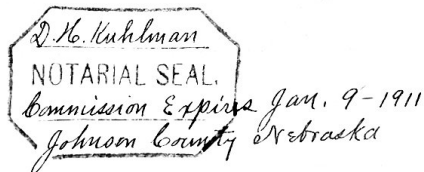
## Plat of College Subdivisions to Sterling

Sterling College Settlement Co.	
TO	
Public	
FILED	April 8 - 1908
At	8 - o'clock A. M.
	W. C. Redfield
	County Clerk.
By	Deputy.

The Sterling College Settlement Company  
 Owners by its duly elected officers, do hereby  
 make the accompanying subdivision of said lands  
 and hereby dedicate to the public use, the streets  
 and alleys as therein specified.

Edward Schroeder      President,  
 L. A. Varner              Secretary,  
 D. M. Boatsman          Treasurer.

Subscribed and sworn to before me this 27<sup>th</sup> day of March, 1908.



D. H. Kuhlman  
 Notary Public.

I, L. A. Varner, do hereby certify that I surveyed for the Sterling College Settlement Company, the above tract of land, that this is a correct plat thereof.

Lines are run parallel with and at right angles to the section line on the South side thereof.

Dimensions of Lots Blocks and Streets are given in rods and fractions of a rod. Square Oak Stakes are driven at the corners on the front of Lots and long round Osage stakes at other points, marked O.S.

Lots are Three rods wide unless otherwise marked. I began said survey November 4 - 1907.

L. A. Varner  
 Surveyor.