

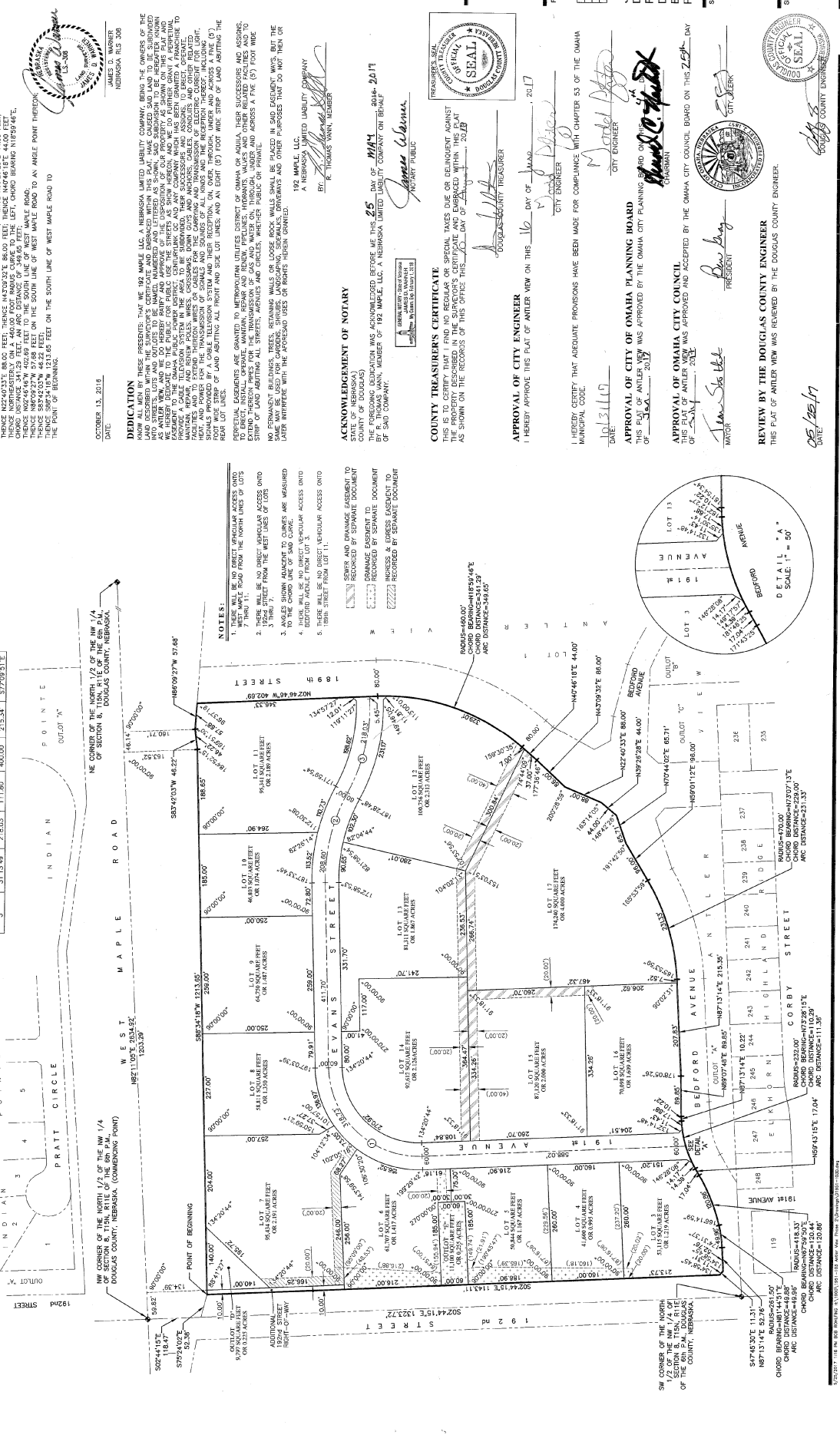
ANTLER VIEW

LOTS 3 THRU 17, INCLUSIVE AND OUTLOTS "D" & "E" BRING A PLATTING OF THAT PART OF THE NW 1/4 OF THE NW 1/4 OF SECTION 8, T15N, R11E OF THE 6TH P.M., DOUGLAS COUNTY, NEBRASKA.



Thompson, Dressen & Dorrer, Inc.
Omaha, NE 68164
p:402.330.8660 f:402.330.5966
td2co.com

CHORDLINE CURVE INFORMATION				
Curve #	Start Chord	Tangent	Radius	Chord Bearing
1	979.12	110.27	400.00	100.24
2	252.43	268.60	400.00	209.24
3	311.24	278.00	400.00	213.34



SURVEYOR'S CERTIFICATE
I HEREBY CERTIFY THAT I HAVE MADE A BOUNDARY SURVEY OF THE SUBDIVISION DESCRIBED HEREIN AND THAT PERMANENT MARKERS HAVE BEEN PLACED AT EACH CORNER AND THAT THE SURVEY IS ACCURATE AND CONFORMS TO THE PLAT THEREON. I HAVE ALSO MADE A PLATTING OF THAT PART OF THE NW 1/4 OF SECTION 8, T15N, R11E OF THE 6TH P.M., DOUGLAS COUNTY, NEBRASKA, DESCRIBED AS FOLLOWS, COMMENCING AT THE NW CORNER OF SAID NW 1/4, (ASSUMED BEARING) 118.47 FEET ON THE WEST LINE OF SAID NW 1/4 TO THE SOUTH LINE OF WEST MAPLE ROAD, THENCE S89°42'52\"/>

ACKNOWLEDGEMENT OF NOTARY
THE FOREGOING DECLARATION WAS ACKNOWLEDGED BEFORE ME THIS 25 DAY OF MAY 2016 at 10:41 AM, 2016, BY JAMES VAN VAN, MEMBER OF THE BOARD OF DIRECTORS OF ANTLER VIEW, INC., A NEBRASKA LIMITED LIABILITY COMPANY ON BEHALF OF SAID COMPANY.
BY: _____
R. THOMAS VANN, MEMBER

CITY ENGINEER
I HEREBY APPROVE THIS PLAN OF ANTLER VIEW ON THIS 16 DAY OF MAY 2017.
CITY ENGINEER
M. D. DeLoe

CITY ENGINEER
I HEREBY CERTIFY THAT ADEQUATE PROVISIONS HAVE BEEN MADE FOR COMPLIANCE WITH CHAPTER 53 OF THE OMAHA MUNICIPAL CODE.
CITY ENGINEER
M. D. DeLoe

COUNTY TREATERS CERTIFICATE
THIS IS TO CERTIFY THAT I FIND NO REGULAR OR SPECIAL TAXES DUE OR DELINQUENT AGAINST THE PROPERTY DESCRIBED IN THE SURVEYOR'S CERTIFICATE AND EMBRACED WITHIN THIS PLAN AS SHOWN ON THE RECORDS OF THIS OFFICE: THIS 20 DAY OF MAY 2017.
DOUGLASS COUNTY TREATERS

APPROVAL OF CITY ENGINEER
I HEREBY APPROVE THIS PLAN OF ANTLER VIEW ON THIS 16 DAY OF MAY 2017.
CITY ENGINEER
M. D. DeLoe

APPROVAL OF CITY ENGINEER
THIS PLAN OF ANTLER VIEW WAS APPROVED BY THE OMAHA CITY PLANNING BOARD ON THE 13 DAY OF OCTOBER 2016.
CITY ENGINEER
M. D. DeLoe

REVIEW BY THE DOUGLASS COUNTY ENGINEER
THIS PLAN OF ANTLER VIEW WAS REVIEWED BY THE DOUGLASS COUNTY ENGINEER.
DOUGLASS COUNTY ENGINEER
M. D. DeLoe

Thompson, Dressen & Dorrer, Inc.
Omaha, NE 68164
p:402.330.8660 f:402.330.5966
td2co.com

ANTLER VIEW

LOTS 3 THRU 17, INCLUSIVE AND OUTLOTS "D" & "E"