

COVER SHEET

HIGHLANDS COALITION

FINAL PLAT



INDEX OF SHEETS

- SHEET 1 - COVER SHEET
- SHEET 2 - FINAL PLAT
- SHEET 3 - FINAL PLAT
- SHEET 4 - FINAL PLAT
- SHEET 5 - FINAL PLAT
- SHEET 6 - FINAL PLAT
- SHEET 7 - FINAL PLAT
- SHEET 8 - FINAL PLAT
- SHEET 9 - LEGAL DOCUMENTS
- SHEET 10 - LEGAL DOCUMENTS

SHEET 1 OF 10

HIGHLANDS COALITION

FINAL PLAT

CURVE DATA

Ⓐ	Δ=07°50'10" R=11284.16 L=1543.27 T=772.84 LC=1542.06 CB=S 71°54'10" E	Ⓒ	Δ=01°45'41" R=881.38 L=20.95 T=10.47 LC=20.95 CB=N 81°09'12" W	Ⓓ	Δ=02°04'20" R=581.38 L=21.03 T=10.51 LC=21.02 CB=S 81°18'31" E
①	Δ=32°21'07" R=490.00 L=276.68 T=142.13 LC=273.02 CB=S 81°48'50" W	②	Δ=24°21'07" R=490.00 L=208.26 T=105.73 LC=206.70 CB=S 77°48'50" W	③	Δ=08°13'39" R=1840.29 L=264.26 T=132.36 LC=264.03 CB=N 85°52'34" E



SCALE: 1" = 200'

LOT 8

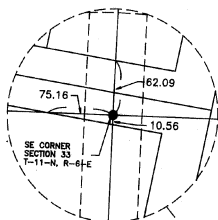
U.S. HIGHWAY 34

2235.70

N 00°20'03" E

N 00°00'37" W
100.00

OUTLOT "A"
BLOCK 1

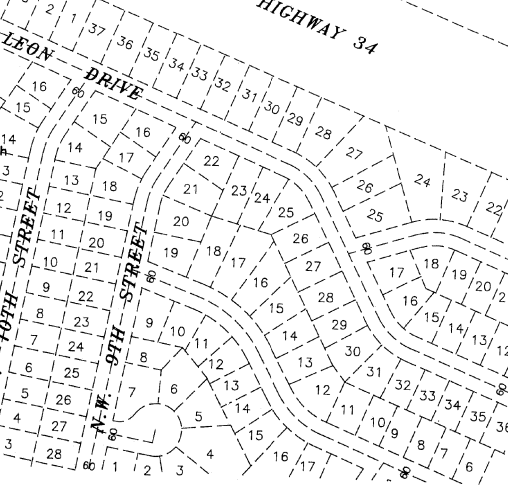


DETAIL

OUTLOT "B"
OUTLOT "C"
OUTLOT "D"
OUTLOT "E"

OUTLOT "F"
OUTLOT "G"
OUTLOT "H"

U.S. HIGHWAY 34

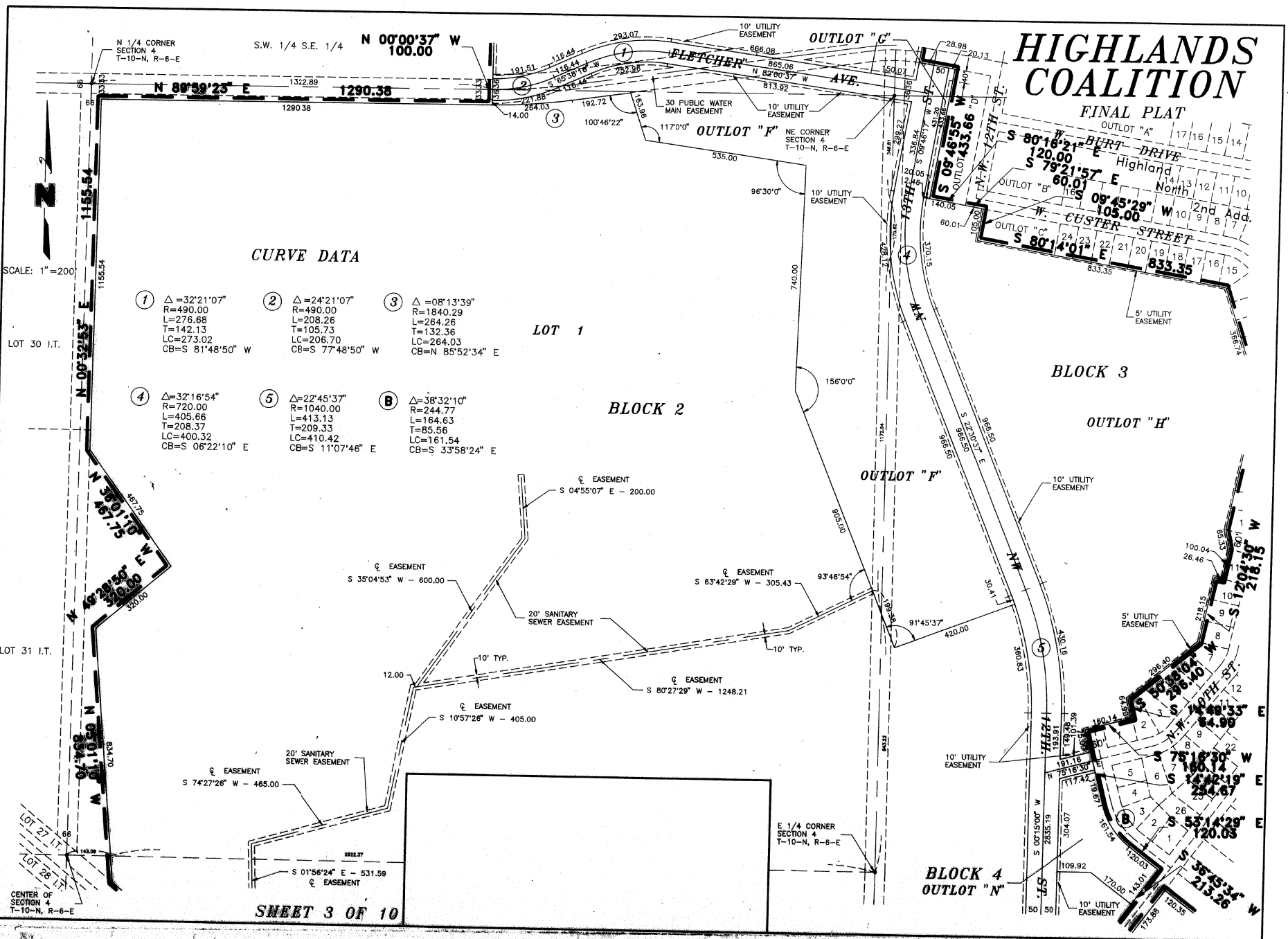


SHEET 2 OF 10

4/9/1993 4:38 P.M. FILE: G:\45592\LFPHCS2 SF = 200

HIGHLANDS COALITION

FINAL PLAT



CURVE DATA

- | | | |
|---|--|--|
| ① $\Delta = 32^{\circ}21'07''$
R=490.00
L=276.88
T=142.13
LC=273.02
CB=S 81'48'50" W | ② $\Delta = 24^{\circ}21'07''$
R=490.00
L=208.26
T=105.73
LC=206.70
CB=S 77'48'50" W | ③ $\Delta = 08^{\circ}13'39''$
R=1840.29
L=284.26
T=132.36
LC=284.03
CB=N 85'52'34" E |
| ④ $\Delta = 32^{\circ}16'54''$
R=720.00
L=405.66
T=208.37
LC=400.32
CB=S 06'22'10" E | ⑤ $\Delta = 22^{\circ}45'37''$
R=1040.00
L=413.13
T=209.33
LC=410.42
CB=S 11'07'46" E | ⑥ $\Delta = 38^{\circ}32'10''$
R=244.77
L=164.63
T=85.56
LC=161.54
CB=S 33'58'24" E |

LOT 1

BLOCK 2

BLOCK 3

BLOCK 4

SHEET 3 OF 10

4/8/1993 4:40 P.M. FILE: G:\45592\LPHCS3 SF = 200

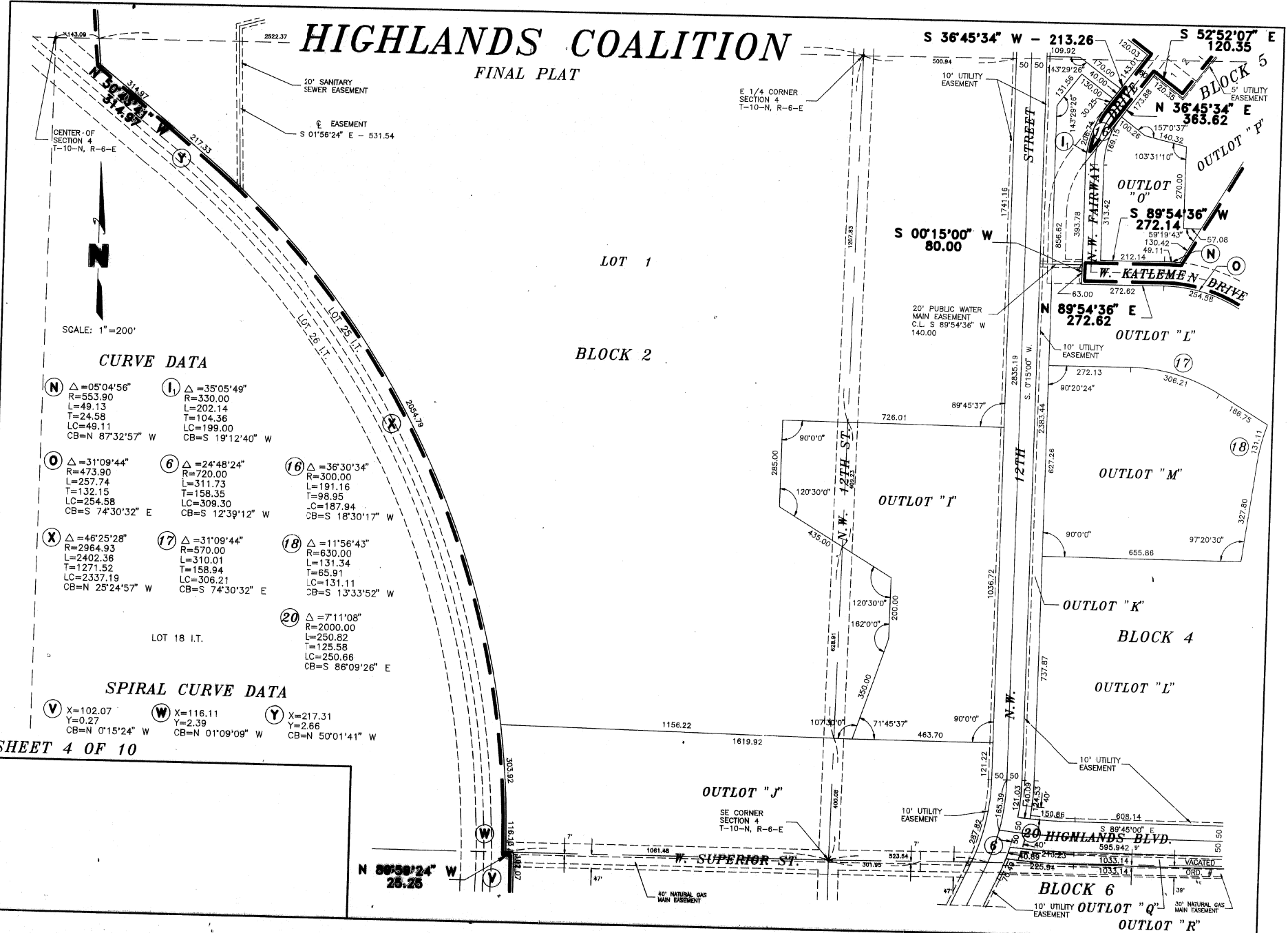
CENTER OF SECTION 4 T-10-N, R-6-E

E 1/4 CORNER SECTION 4 T-10-N, R-6-E

200

HIGHLANDS COALITION

FINAL PLAT



250' SANITARY SEWER EASEMENT
 E EASEMENT
 S 01°58'24" E - 531.54

E 1/4 CORNER SECTION 4
 T-10-N, R-6-E



SCALE: 1"=200'

CURVE DATA

- | | | | |
|--|---|--|--|
| (N) $\Delta = 05^{\circ}04'56"$
R=553.90
L=49.13
T=24.58
LC=49.11
CB=N 87°32'57" W | (1) $\Delta = 35^{\circ}05'49"$
R=330.00
L=202.14
T=104.36
LC=199.00
CB=S 19°12'40" W | (6) $\Delta = 24^{\circ}48'24"$
R=720.00
L=311.73
T=158.35
LC=309.30
CB=S 12°39'12" W | (16) $\Delta = 36^{\circ}30'34"$
R=300.00
L=191.16
T=98.95
LC=187.94
CB=S 18°30'17" W |
| (O) $\Delta = 31^{\circ}09'44"$
R=473.90
L=257.74
T=132.15
LC=254.58
CB=S 74°30'32" E | (17) $\Delta = 31^{\circ}09'44"$
R=570.00
L=310.01
T=158.94
LC=306.21
CB=S 74°30'32" E | (18) $\Delta = 11^{\circ}56'43"$
R=630.00
L=131.34
T=65.91
LC=131.11
CB=S 13°33'52" W | (20) $\Delta = 71^{\circ}11'08"$
R=2000.00
L=250.82
T=125.58
LC=250.66
CB=S 86°09'26" E |
| (X) $\Delta = 46^{\circ}25'28"$
R=2964.93
L=2402.36
T=1271.52
LC=2337.19
CB=N 25°24'57" W | (17) $\Delta = 31^{\circ}09'44"$
R=570.00
L=310.01
T=158.94
LC=306.21
CB=S 74°30'32" E | (18) $\Delta = 11^{\circ}56'43"$
R=630.00
L=131.34
T=65.91
LC=131.11
CB=S 13°33'52" W | (20) $\Delta = 71^{\circ}11'08"$
R=2000.00
L=250.82
T=125.58
LC=250.66
CB=S 86°09'26" E |

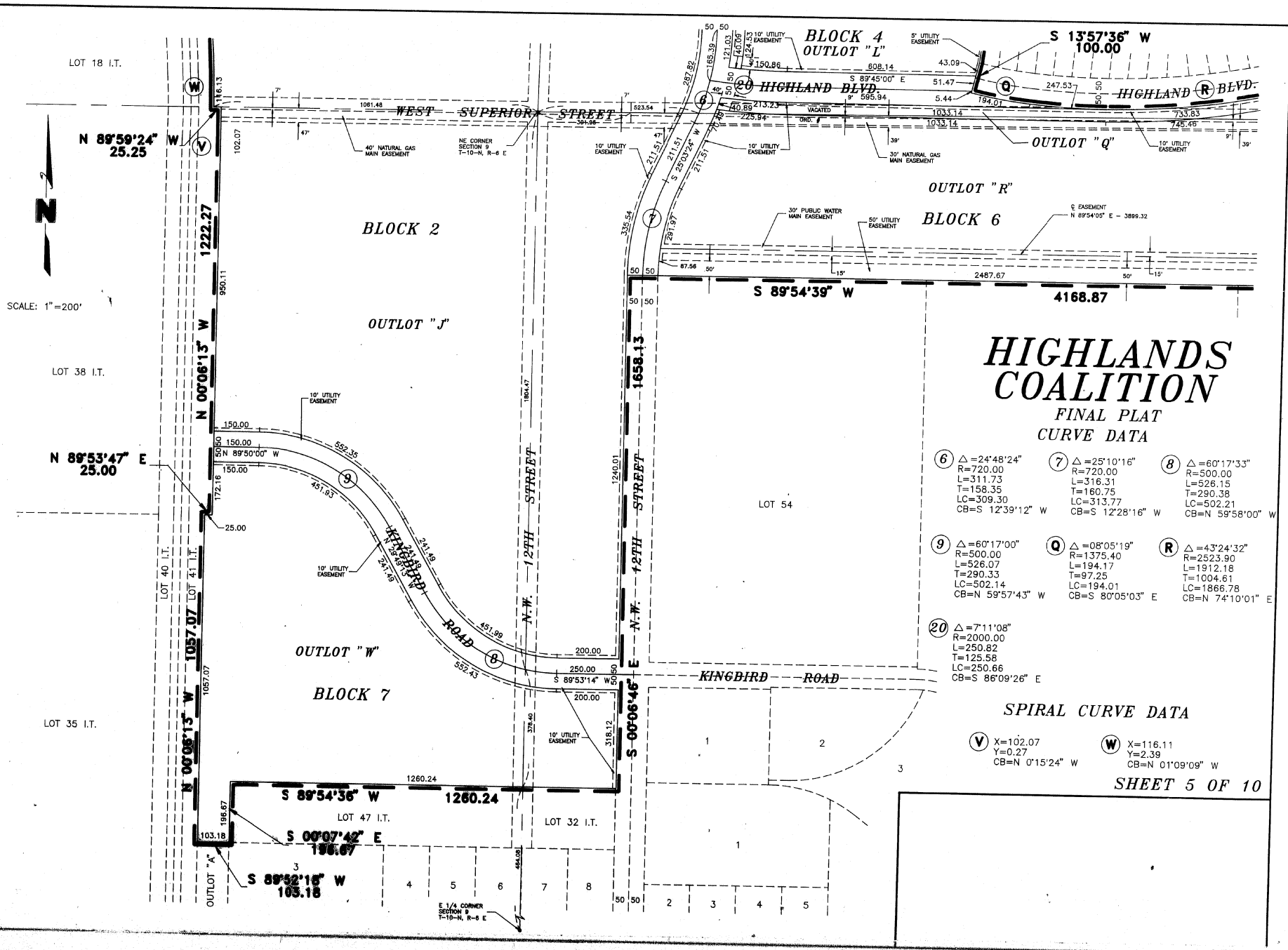
SPIRAL CURVE DATA

- | | | |
|---|--|--|
| (V) X=102.07
Y=0.27
CB=N 0°15'24" W | (W) X=116.11
Y=2.39
CB=N 01°09'09" W | (Y) X=217.31
Y=2.66
CB=N 50°01'41" W |
|---|--|--|

SHEET 4 OF 10

4/8/1983 4:29 P.M. FILE: C:\45582\LPHC54 SF = 200

30065



HIGHLANDS COALITION FINAL PLAT CURVE DATA

<p>⑥ Δ=24°48'24" R=720.00 L=311.73 T=158.35 LC=309.30 CB=S 12°39'12" W</p>	<p>⑦ Δ=25°10'16" R=720.00 L=318.31 T=160.75 LC=313.77 CB=S 12°28'16" W</p>	<p>⑧ Δ=60°17'33" R=500.00 L=526.15 T=290.38 LC=502.21 CB=N 59°58'00" W</p>
<p>⑨ Δ=60°17'00" R=500.00 L=526.07 T=290.33 LC=502.14 CB=N 59°57'43" W</p>	<p>⑩ Δ=08°05'19" R=1375.40 L=194.17 T=97.25 LC=194.01 CB=S 80°05'03" E</p>	<p>Ⓜ Δ=43°24'32" R=2523.90 L=1912.18 T=1004.61 LC=1866.78 CB=N 74°10'01" E</p>

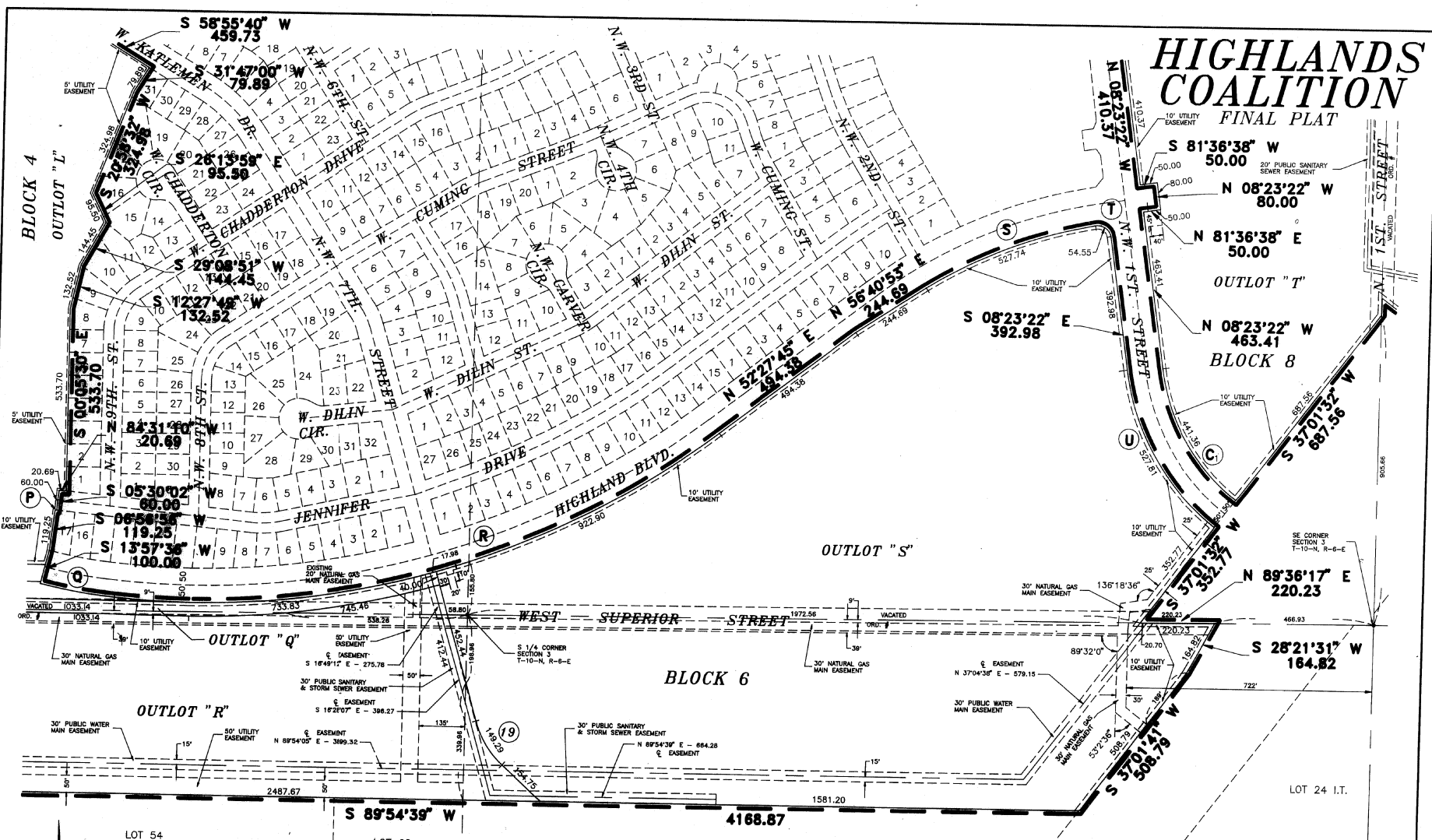
SPIRAL CURVE DATA

<p>Ⓜ X=102.07 Y=0.27 CB=N 0°15'24" W</p>	<p>Ⓜ X=116.11 Y=2.39 CB=N 01°09'09" W</p>
--	---

SHEET 5 OF 10

HIGHLANDS COALITION

FINAL PLAT



CURVE DATA

(P) $\Delta = 01^{\circ}19'34''$ R=201.76 L=4.67 T=2.34 LC=4.67 CB=N 83°46'38" W	(Q) $\Delta = 08^{\circ}05'19''$ R=1375.40 L=194.17 T=97.25 LC=194.01 CB=S 80°05'03" E	(R) $\Delta = 43^{\circ}24'32''$ R=2523.90 L=1912.18 T=1004.61 LC=1866.78 CB=N 74°10'01" E	(19) $\Delta = 31^{\circ}30'00''$ R=275.00 L=151.19 T=77.56 LC=149.29 CB=S 32°13'05" E
(S) $\Delta = 22^{\circ}03'34''$ R=1379.21 L=531.01 T=268.83 LC=527.74 CB=N 68°50'20" E	(T) $\Delta = 91^{\circ}44'31''$ R=38.00 L=60.85 T=39.17 LC=54.55 CB=S 54°15'38" E	(U) $\Delta = 44^{\circ}20'14''$ R=699.40 L=541.22 T=284.97 LC=527.81 CB=S 30°33'29" E	(C) $\Delta = 44^{\circ}17'35''$ R=585.39 L=452.54 T=238.26 LC=441.36 CB=N 30°32'10" W

SHEET 6 OF 10

1/8/1983 4:49 P.M. FILE: G:\45592\LFPHCS6 SF = 200

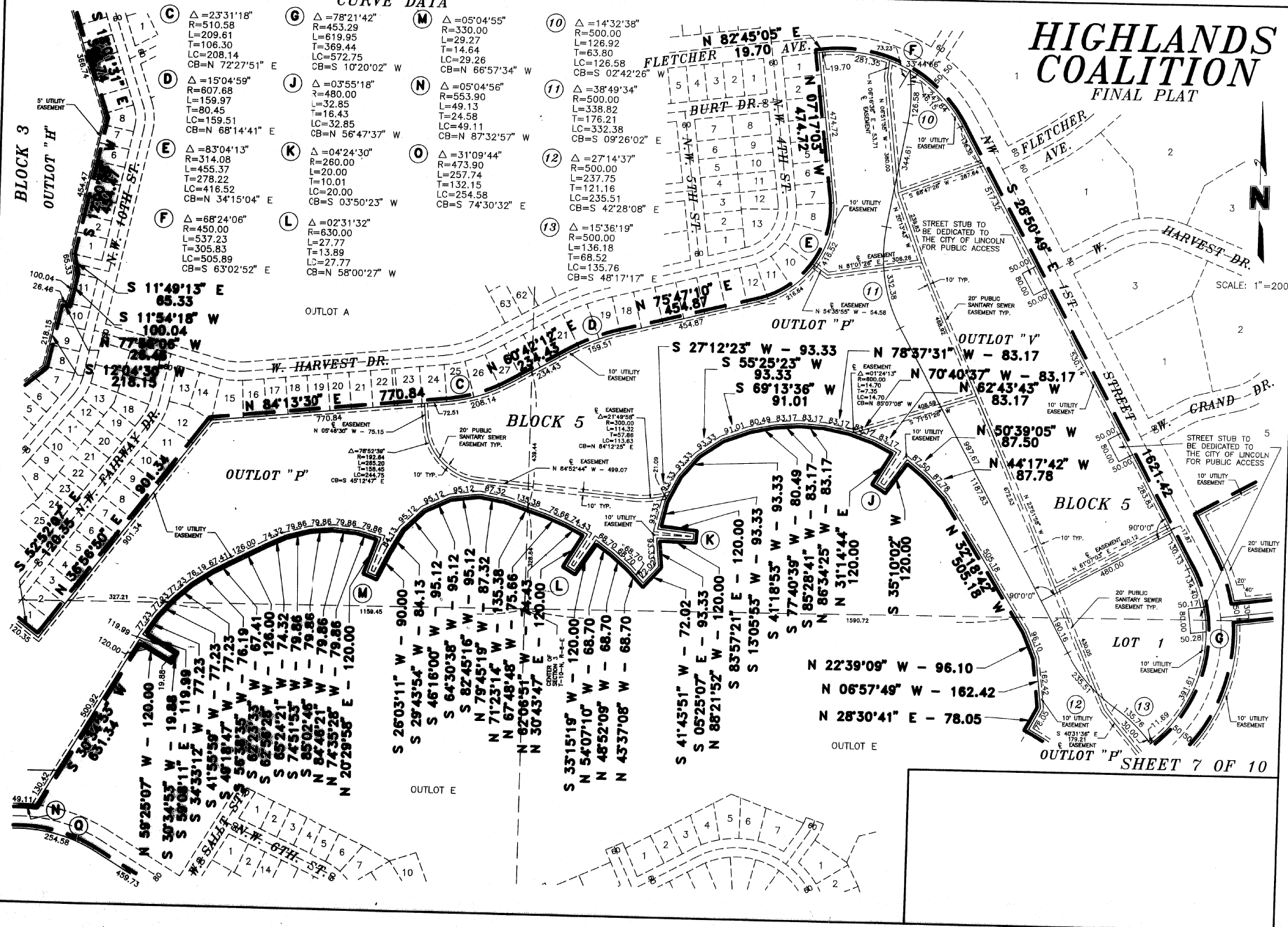
SCALE: 1"=200'

CURVE DATA

- (C) $\Delta = 233'11''$
R=510.58
L=209.61
T=106.30
LC=208.14
CB=N 72°27'51" E
- (D) $\Delta = 15'04'59''$
R=607.68
L=159.97
T=80.45
LC=159.51
CB=N 68°14'41" E
- (E) $\Delta = 83'04'13''$
R=314.08
L=455.37
T=278.22
LC=416.52
CB=N 34°15'04" E
- (F) $\Delta = 68'24'06''$
R=450.00
L=537.23
T=305.83
LC=505.89
CB=S 63°02'52" E
- (G) $\Delta = 78'21'42''$
R=453.29
L=169.95
T=369.44
LC=572.75
CB=S 10'20'02" W
- (J) $\Delta = 03'55'18''$
R=490.00
L=32.85
T=16.43
LC=32.85
CB=N 56°47'37" W
- (K) $\Delta = 04'24'30''$
R=280.00
L=20.00
T=10.01
LC=20.00
CB=S 03'50'23" W
- (L) $\Delta = 02'31'32''$
R=630.00
L=27.77
T=13.89
LC=27.77
CB=N 58°00'27" W
- (M) $\Delta = 05'04'55''$
R=330.00
L=29.27
T=14.64
LC=29.26
CB=N 66°57'34" W
- (N) $\Delta = 05'04'56''$
R=553.90
L=49.13
T=24.58
LC=29.26
CB=N 87°32'57" W
- (O) $\Delta = 31'09'44''$
R=270.00
L=157.74
T=121.16
LC=235.51
CB=S 74°30'32" E
- (10) $\Delta = 14'32'38''$
R=500.00
L=126.92
T=63.80
LC=126.58
CB=S 02°42'26" W
- (11) $\Delta = 38'49'34''$
R=500.00
L=338.82
T=176.21
LC=332.38
CB=S 09°26'02" E
- (12) $\Delta = 27'14'37''$
R=500.00
L=237.75
T=121.16
LC=235.51
CB=S 42°28'08" E
- (13) $\Delta = 15'36'19''$
R=500.00
L=136.18
T=68.52
LC=135.76
CB=S 48°17'17" E

HIGHLANDS COALITION

FINAL PLAT



HIGHLANDS COALITION

FINAL PLAT

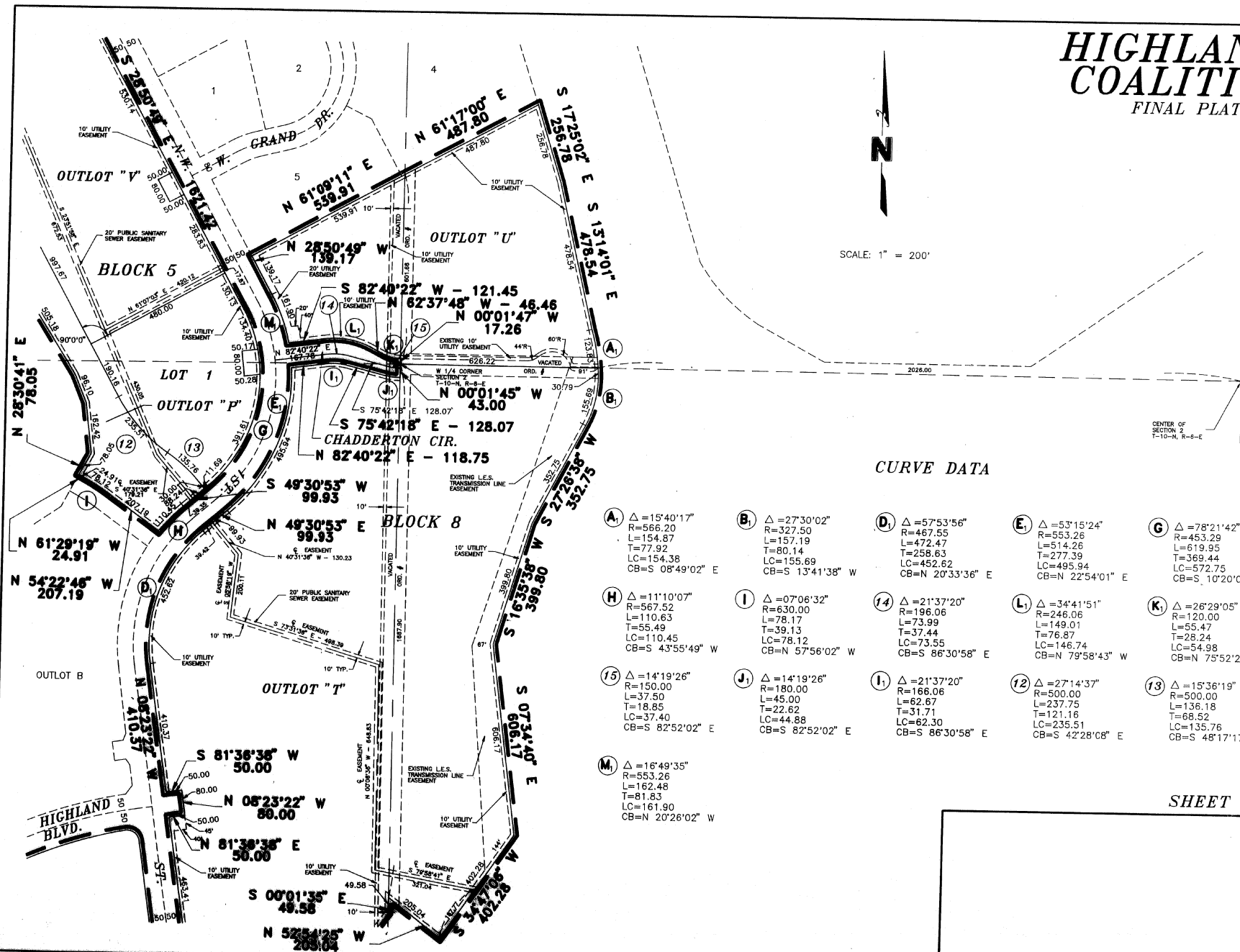
SCALE: 1" = 200'

CURVE DATA

(A) Δ = 15°40'17" R = 566.20 L = 154.87 T = 77.92 LC = 154.38 CB = S 08°49'02" E	(B) Δ = 27°30'02" R = 327.50 L = 157.19 T = 80.14 LC = 155.69 CB = S 13°41'38" W	(D) Δ = 57°53'56" R = 467.55 L = 472.47 T = 258.63 LC = 452.62 CB = N 20°33'36" E	(E) Δ = 53°15'24" R = 553.26 L = 514.26 T = 277.39 LC = 495.94 CB = N 22°54'01" E	(G) Δ = 78°21'42" R = 453.29 L = 619.95 T = 369.44 LC = 572.75 CB = S 10°20'02" W
(H) Δ = 11°10'07" R = 567.52 L = 110.63 T = 55.49 LC = 110.45 CB = S 43°55'49" W	(I) Δ = 07°06'32" R = 630.00 L = 78.17 T = 39.13 LC = 78.12 CB = N 57°56'02" W	(14) Δ = 21°37'20" R = 196.06 L = 73.99 T = 37.44 LC = 73.55 CB = S 86°30'58" E	(L) Δ = 34°41'51" R = 246.06 L = 149.01 T = 76.87 LC = 146.74 CB = N 79°58'43" W	(K) Δ = 26°29'05" R = 120.00 L = 55.47 T = 28.24 LC = 54.98 CB = N 75°52'20" W
(15) Δ = 14°19'26" R = 150.00 L = 37.50 T = 18.85 LC = 37.40 CB = S 82°52'02" E	(J) Δ = 14°19'26" R = 180.00 L = 45.00 T = 22.62 LC = 44.88 CB = S 82°52'02" E	(1) Δ = 21°37'20" R = 166.06 L = 62.67 T = 31.71 LC = 62.30 CB = S 86°30'58" E	(12) Δ = 27°14'37" R = 500.00 L = 237.75 T = 121.16 LC = 235.51 CB = S 42°28'08" E	(13) Δ = 15°36'19" R = 500.00 L = 136.18 T = 68.52 LC = 135.76 CB = S 48°17'17" E
(M) Δ = 16°49'35" R = 553.26 L = 162.48 T = 81.83 LC = 161.90 CB = N 20°26'02" W				

SHEET 8 OF 10

4/9/1983 7:57 A.M. FILE: G:\45592\LPHCSB SF = 200



SURVEYORS CERTIFICATE

I HEREBY CERTIFY THAT I HAVE CAUSED TO BE SURVEYED THE SUBDIVISION TO BE KNOWN AS HIGHLANDS COALITION... FOLLOWING LOT 42 1/2 FT. OF SECTION 10...

COMMENCING FROM THE NW CORNER OF LOT 9 BLK 3 HIGHLAND NORTH FIRST ADDITION... SOUTH 9 DEGREES 46 MINUTES... WEST 1511.89 FEET TO THE SW CORNER OF SAID OUTLOT E...

SECONDS WEST, ALONG THE EAST LINE OF LOTS 7 THROUGH 1 BLOCK 20... DISTANCE OF 474.72 FEET TO THE CORNER OF SAID LOT 1 BLK 20... DISTANCE OF 78.66 FEET TO A POINT, THENCE NORTH 70 DEGREES 10' 21" 3/4"...

DISTANCE OF 120.00 FEET TO A POINT, THENCE NORTH 74 DEGREES 35 MINUTES 28 SECONDS WEST, ALONG THE NORTH LINE OF SAID OUTLOT E... DISTANCE OF 78.66 FEET TO A POINT, THENCE NORTH 70 DEGREES 10' 21" 3/4"...

HIGHLANDS COALITION FINAL PLAT

OF 196.67 FEET TO A POINT, THENCE SOUTH 89 DEGREES 52 MINUTES 18 SECONDS... DISTANCE OF 103.18 FEET TO THE SW CORNER OF SAID LOT 48 I.T. THENCE NORTH 0 DEGREES 06 MINUTES 13 SECONDS WEST...

4/9/1993 8:01 A.M. FILE: G:\45892A\PHIC89 SF = 200

DEDICATION

COMMENCING FROM THE SW CORNER OF LOT 5 HIGHLAND OFFICE PARK, SAID POINT ALSO BEING THE TRUE POINT OF BEGINNING, THENCE NORTH 61 DEGREES 09 MINUTES 11 SECONDS EAST, ALONG THE SOUTH LINE OF SAID LOT 5 A DISTANCE OF 539.91 FEET TO A POINT, THENCE NORTH 61 DEGREES 17 MINUTES 00 SECONDS EAST, ALONG THE SOUTH LINE OF LOT 4 OF SAID HIGHLAND OFFICE PARK A DISTANCE OF 487.80 FEET TO THE SE CORNER OF SAID LOT 4, THENCE SOUTH 17 DEGREES 25 MINUTES 02 SECONDS EAST, ALONG THE EAST LINE OF SAID LOT 44 I.T. A DISTANCE OF 256.78 FEET TO A POINT, THENCE SOUTH 13 DEGREES 14 MINUTES 01 SECONDS EAST, ALONG THE EAST LINE OF SAID LOT 44 I.T. A DISTANCE OF 478.54 FEET TO A POINT, THENCE AROUND A CURVE IN A CLOCKWISE DIRECTION HAVING A DELTA ANGLE OF 15 DEGREES 40 MINUTES 17 SECONDS, AN ARC DISTANCE OF 154.87 FEET, A RADIUS OF 586.20 FEET, AND A CHORD OF SOUTH 8 DEGREES 49 MINUTES 02 SECONDS EAST, A DISTANCE OF 154.38 FEET TO A POINT, THENCE AROUND A CURVE IN A CLOCKWISE DIRECTION HAVING A DELTA ANGLE OF 27 DEGREES 30 MINUTES 02 SECONDS, AN ARC DISTANCE OF 157.19 FEET, A RADIUS OF 327.50 FEET, AND A CHORD OF SOUTH 13 DEGREES 41 MINUTES 38 SECONDS WEST, A DISTANCE OF 155.89 FEET TO A POINT, THENCE SOUTH 27 DEGREES 26 MINUTES 38 SECONDS WEST, ALONG THE EAST LINE OF LOT 30 I.T. A DISTANCE OF 352.75 FEET TO A POINT, THENCE SOUTH 16 DEGREES 35 MINUTES 38 SECONDS WEST, ALONG THE EAST LINE OF SAID LOT 30 I.T. A DISTANCE OF 599.80 FEET TO A POINT, THENCE SOUTH 7 DEGREES 34 MINUTES 40 SECONDS EAST, ALONG THE EAST LINE OF SAID LOT 30 I.T. A DISTANCE OF 606.17 FEET TO A POINT, THENCE SOUTH 34 DEGREES 47 MINUTES 06 SECONDS WEST, ALONG THE SOUTHWEST LINE OF SAID LOT 30 I.T. A DISTANCE OF 402.28 FEET TO A POINT, THENCE NORTH 52 DEGREES 54 MINUTES 25 SECONDS WEST, ALONG THE SOUTHWEST LINE OF SAID LOT 30 I.T. A DISTANCE OF 205.04 FEET TO A POINT, THENCE SOUTH 0 DEGREES 01 MINUTES 35 SECONDS EAST, A DISTANCE OF 49.58 FEET TO A POINT, THENCE SOUTH 37 DEGREES 01 MINUTES 32 SECONDS WEST, ALONG THE NORTHWEST ROW LINE OF INTERSTATE 80 A DISTANCE OF 687.56 FEET TO A POINT, THENCE AROUND A CURVE IN A CLOCKWISE DIRECTION HAVING A DELTA ANGLE OF 44 DEGREES 17 MINUTES 35 SECONDS, AN ARC DISTANCE OF 452.54 FEET, A RADIUS OF 585.39 FEET, AND A CHORD OF NORTH 30 DEGREES 32 MINUTES 10 SECONDS WEST, A DISTANCE OF 441.36 FEET TO A POINT, THENCE NORTH 8 DEGREES 23 MINUTES 22 SECONDS WEST, ALONG THE EAST ROW LINE OF NW 1ST STREET A DISTANCE OF 463.41 FEET TO A POINT, THENCE NORTH 81 DEGREES 36 MINUTES 38 SECONDS EAST, ALONG THE EAST LINE OF SAID NW 1ST STREET A DISTANCE OF 50.00 FEET TO A POINT, THENCE NORTH 8 DEGREES 23 MINUTES 22 SECONDS WEST, ALONG THE EAST LINE OF SAID NW 1ST STREET A DISTANCE OF 80.00 FEET TO A POINT, THENCE SOUTH 81 DEGREES 36 MINUTES 38 SECONDS WEST, ALONG THE EAST LINE OF SAID NW 1ST STREET A DISTANCE OF 50.00 FEET TO A POINT, THENCE NORTH 8 DEGREES 23 MINUTES 22 SECONDS WEST, ALONG THE EAST LINE OF SAID NW 1ST STREET A DISTANCE OF 410.37 FEET TO A POINT, THENCE AROUND A CURVE IN A CLOCKWISE DIRECTION HAVING A DELTA ANGLE OF 57 DEGREES 53 MINUTES 56 SECONDS, AN ARC DISTANCE OF 472.47 FEET, A RADIUS OF 487.55 FEET, AND A CHORD OF NORTH 20 DEGREES 43 MINUTES 25 SECONDS EAST, A DISTANCE OF 452.62 FEET TO A POINT, THENCE NORTH 49 DEGREES 30 MINUTES 53 SECONDS EAST, ALONG THE EAST LINE OF SAID NW 1ST STREET A DISTANCE OF 99.93 FEET TO A POINT, THENCE AROUND A CURVE IN A COUNTERCLOCKWISE DIRECTION HAVING A DELTA ANGLE OF 15 MINUTES 24 SECONDS, AN ARC DISTANCE OF 514.26 FEET, A RADIUS OF 553.26 FEET, AND A CHORD OF NORTH 22 DEGREES 54 MINUTES 01 SECONDS EAST, A DISTANCE OF 495.94 FEET TO THE INTERSECTION OF THE SOUTH R.O.W. LINE OF CHADDERTON CIRCLE AND THE EAST R.O.W. LINE OF SAID NORTHWEST 1ST STREET, THENCE NORTH 62 DEGREES 40 MINUTES 22 SECONDS EAST ALONG THE SOUTH R.O.W. LINE OF CHADDERTON CIRCLE A DISTANCE OF 118.75 FEET TO A POINT OF CURVATURE, THENCE AROUND A CURVE IN A CLOCKWISE DIRECTION HAVING A DELTA ANGLE OF 21 DEGREES 37 MINUTES 20 SECONDS, AN ARC DISTANCE OF 82.07 FEET, A RADIUS OF 166.06 FEET, AND A CHORD OF SOUTH 86 DEGREES 30 MINUTES 58 SECONDS EAST A DISTANCE OF 82.30 FEET TO A POINT, THENCE SOUTH 75 DEGREES 42 MINUTES 18 SECONDS EAST ALONG THE SOUTH R.O.W. LINE OF CHADDERTON CIRCLE A DISTANCE OF 128.07 FEET TO A POINT OF CURVATURE, THENCE AROUND A CURVE IN A COUNTERCLOCKWISE DIRECTION HAVING A DELTA ANGLE OF 14 DEGREES 19 MINUTES 26 SECONDS, AN ARC DISTANCE OF 45.00 FEET, A RADIUS OF 180.00 FEET, AND A CHORD OF SOUTH 82 DEGREES 52 MINUTES 02 SECONDS EAST, A DISTANCE OF 44.86 FEET TO A POINT, THENCE NORTH 0 DEGREES 01 MINUTES 45 SECONDS WEST ALONG THE EAST R.O.W. LINE OF SAID CHADDERTON CIRCLE A DISTANCE OF 43.00 FEET TO THE WEST 1/4 CORNER OF SAID SECTION 2, THENCE NORTH 0 DEGREES 01 MINUTES 47 SECONDS WEST ALONG THE WEST R.O.W. LINE OF SAID CHADDERTON CIRCLE A DISTANCE OF 17.26 FEET TO A POINT, THENCE AROUND A CURVE IN A CLOCKWISE DIRECTION HAVING A DELTA ANGLE OF 28 DEGREES 29 MINUTES 05 SECONDS, AN ARC DISTANCE OF 55.47 FEET, A RADIUS OF 120.00 FEET, AND A CHORD OF NORTH 75 DEGREES 52 MINUTES 20 SECONDS WEST A DISTANCE OF 54.98 FEET TO A POINT, THENCE NORTH 62 DEGREES 37 MINUTES 48 SECONDS WEST ALONG THE NORTH R.O.W. LINE OF SAID CHADDERTON CIRCLE A DISTANCE OF 46.46 FEET TO A POINT OF CURVATURE, THENCE AROUND A CURVE IN A COUNTERCLOCKWISE DIRECTION HAVING A DELTA ANGLE OF 34 DEGREES 41 MINUTES 51 SECONDS, AN ARC DISTANCE OF 149.01 FEET, A RADIUS OF 246.06 FEET, AND A CHORD OF NORTH 79 DEGREES 58 MINUTES 43 SECONDS WEST A DISTANCE OF 146.74 FEET TO A POINT, THENCE SOUTH 82 DEGREES 40 MINUTES 22 SECONDS WEST ALONG THE NORTH R.O.W. LINE OF CHADDERTON CIRCLE A DISTANCE OF 121.45 FEET TO THE INTERSECTION OF THE NORTH R.O.W. LINE OF SAID CHADDERTON CIRCLE AND THE EAST R.O.W. LINE OF NORTHWEST 1ST STREET, THENCE AROUND A CURVE IN A COUNTERCLOCKWISE DIRECTION HAVING A DELTA ANGLE OF 16 DEGREES 49 MINUTES 35 SECONDS, AN ARC DISTANCE OF 162.48 FEET, A RADIUS OF 553.26 FEET, AND A CHORD OF NORTH 22 DEGREES 54 MINUTES 02 SECONDS WEST A DISTANCE OF 161.90 FEET TO A POINT, THENCE NORTH 28 DEGREES 50 MINUTES 49 SECONDS WEST ALONG THE EAST R.O.W. LINE OF NORTHWEST 1ST STREET A DISTANCE OF 139.17 FEET TO THE POINT OF BEGINNING. SAID TRACT CONTAINS A CALCULATED AREA OF 59.20 ACRES MORE OR LESS.

PERMANENT MONUMENTS HAVE BEEN FOUND OR SET AT ALL BOUNDARY CORNERS, STREET INTERSECTIONS, BLOCK CORNERS, POINTS OF TANGENCY AND CURVATURE AS SHOWN ON THE PLAT IN ACCORDANCE WITH TITLE 28 OF THE LINCOLN MUNICIPAL CODE. TEMPORARY MARKERS HAVE BEEN PLACED AT ALL LOT CORNERS AND THE OWNER WILL FURNISH TO THE CITY OF LINCOLN A STAKING BOND TO INSURE THE PLACING OF PERMANENT MONUMENTS AT ALL SUCH LOT CORNERS PRIOR TO THE CONSTRUCTION OR CONVEYANCE OF ANY LOT SHOWN ON THIS FINAL PLAT. ALL DIMENSIONS ARE CHORD MEASUREMENTS UNLESS OTHERWISE SHOWN, AND ARE IN FEET AND DECIMALS OF A FOOT.

DEDICATION

THE FOREGOING PLAT, IS KNOWN AS HIGHLANDS COALITION, A SUBDIVISION COMPOSED OF THE FOLLOWING LOT 48 I.T. OF SECTION 9, TOWNSHIP 10 NORTH, RANGE 6 EAST, LOT 46 I.T. AND LOT 56 I.T. OF SECTION 10, TOWNSHIP 10 NORTH, RANGE 6 EAST, LOT 44 I.T. AND LOT 30 I.T. OF SECTION 2, TOWNSHIP 10 NORTH, RANGE 6 EAST, LOT 17 I.T., LOT 19 I.T., LOTS 1 THROUGH 6 & OUTLOT "A" HIGHLAND WOODS ADDITION, A PORTION OF THE EAST 1/2 OF SECTION 3, A PORTION OF THE SE 1/4 OF SECTION 3, A PORTION OF THE WEST 1/2 OF SECTION 3, OF SECTION 3, TOWNSHIP 10 NORTH, RANGE 6 EAST, LOT 23 I.T., LOT 24 I.T., LOT 32 I.T., A PORTION OF LOT 30 I.T., AND A PORTION LOT 31 I.T. OF SECTION 4, TOWNSHIP 10 NORTH, RANGE 6 EAST, LOT 20 I.T., LOT 6 I.T., AND A PORTION OF THE SE 1/4 OF SECTION 33, TOWNSHIP 11 NORTH, RANGE 6 EAST, AND A PORTION OF THE SW 1/4 OF SECTION 34, TOWNSHIP 11 NORTH, RANGE 6 EAST OF THE 6TH. P.M., CITY OF LINCOLN, LANCASTER COUNTY, NEBRASKA, AND IS MORE PARTICULARLY DESCRIBED IN THE SURVEYOR'S CERTIFICATE. THIS DEDICATION IS MADE WITH THE FREE CONSENT AND IN ACCORDANCE WITH THE DESIRES OF THE UNDERSIGNED, SOLE OWNER(S), AND THE EASEMENTS SHOWN THEREON ARE HEREBY GRANTED IN PERPETUITY TO THE CITY OF LINCOLN, NEBRASKA, A MUNICIPAL CORPORATION, THE LINCOLN TELEPHONE AND TELEGRAPH COMPANY, TV TRANSMISSION, INC., MINNEAPOLIS, THEIR SUCCESSORS AND ASSIGNS, TO ALLOW ENTRY FOR THE PURPOSE OF CONSTRUCTION, RECONSTRUCTION, REPLACEMENT, REPAIR, OPERATION AND MAINTENANCE OF WIRES, CABLES, CONDUITS, FIXTURES, POLES, TOWERS, PIPES, AND EQUIPMENT FOR THE DISTRIBUTION OF ELECTRICITY AND GAS; TELEPHONE AND CABLE TELEVISION; WASTEWATER COLLECTORS; STORM DRAINS; WATER MAINS AND ALL APPURTENANCES THERETO, OVER, UPON, OR UNDER THE EASEMENTS AS SHOWN ON THE FOREGOING PLAT.

THE CONSTRUCTION OR LOCATION OF ANY BUILDING OR STRUCTURE, EXCLUDING FENCES, OVER, UPON, OR UNDER ANY EASEMENT SHOWN THEREON SHALL BE PROHIBITED.

THE CONSTRUCTION OR LOCATION OF ANY FENCE OR OTHER IMPROVEMENT WHICH OBSTRUCTS DRAINAGE SHALL BE PROHIBITED OVER, UPON, OR UNDER ANY STORM DRAIN EASEMENT OR DRAINAGE EASEMENT SHOWN THEREON.

THE CITY OF LINCOLN, ITS SUCCESSORS OR ASSIGNS ARE HEREBY HELD HARMLESS FOR THE COST OF REPLACEMENT OR DAMAGE TO ANY IMPROVEMENT OR VEGETATION OVER, UPON, OR UNDER ANY EASEMENT SHOWN THEREON.

THE STREETS SHOWN ARE HEREBY DEDICATED TO THE PUBLIC. THE ACCESS EASEMENTS AND THE PEDESTRIAN WAY EASEMENTS SHOWN THEREON SHALL BE USED FOR PUBLIC ACCESS AND THE PUBLIC IS HEREBY GRANTED THE RIGHT OF SUCH USE.

THE RIGHT OF DIRECT VEHICULAR ACCESS TO NW 1ST STREET, HIGHLAND BLVD. NW 12TH STREET, FLETCHER AVENUE, AND U.S. HIGHWAY NO. 34 FROM LOTS ABUTTING SAID STREET(S) IS HEREBY RELINQUISHED.

WITNESS MY HAND THIS 5th DAY OF May 1993

[Signature]

THE CITY OF LINCOLN, NEBRASKA
A MUNICIPAL CORPORATION
MAYOR MIKE JOHANNIS

[Signature]

DUNCAN AVIATION, INC.
A NEBRASKA CORPORATION
J. ROBERT DUNCAN, PRESIDENT

[Signature]

CRETE CARRIER CORPORATION
A NEBRASKA CORPORATION
TOMM M. OSTERGARD, PRESIDENT

ACCEPTANCE

THE FOREGOING PLAT AND DEDICATION WAS APPROVED AND ACCEPTED BY THE CITY COUNCIL OF THE CITY OF LINCOLN, NEBRASKA BY ORDINANCE NO. 62916 PASSED ON THIS 2nd DAY OF AUGUST 1993

ATTEST: *[Signature]*
CITY CLERK



HIGHLANDS COALITION

FINAL PLAT
ACKNOWLEDGEMENT OF NOTARY

STATE OF NEBRASKA
COUNTY OF LANCASTER

ON THIS 27th DAY OF April 1993, BEFORE ME, THE UNDERSIGNED, A NOTARY PUBLIC, DULY COMMISSIONED, QUALIFIED IN AND FOR SAID COUNTY AND STATE, PERSONALLY CAME TOMM M. OSTERGARD WHO IS PERSONALLY KNOWN TO ME TO BE THE IDENTICAL PERSON WHOSE NAME IS AFFIXED TO THIS PLAT AS PRESIDENT OF CRETE CARRIER CORPORATION, A NEBRASKA CORPORATION, AND HE ACKNOWLEDGES THE EXECUTION THEREOF TO BE HIS VOLUNTARY ACT AND DEED AND THE VOLUNTARY ACT AND DEED OF SAID COMPANY.

MY COMMISSION EXPIRES ON THE 13th DAY OF August 1993 A.D.

[Signature]
NOTARY PUBLIC

ACKNOWLEDGEMENT OF NOTARY

STATE OF NEBRASKA
COUNTY OF LANCASTER

ON THIS 27th DAY OF April 1993, BEFORE ME, THE UNDERSIGNED, A NOTARY PUBLIC, DULY COMMISSIONED, QUALIFIED IN AND FOR SAID COUNTY AND STATE, PERSONALLY CAME ROBERT DUNCAN WHO IS PERSONALLY KNOWN TO ME TO BE THE IDENTICAL PERSON WHOSE NAME IS AFFIXED TO THIS PLAT AS PRESIDENT OF DUNCAN AVIATION, INC., A NEBRASKA CORPORATION, AND HE ACKNOWLEDGES THE EXECUTION THEREOF TO BE HIS VOLUNTARY ACT AND DEED AND THE VOLUNTARY ACT AND DEED OF SAID COMPANY.

MY COMMISSION EXPIRES ON THE 13th DAY OF August 1993 A.D.

[Signature]
NOTARY PUBLIC

ACKNOWLEDGEMENT OF NOTARY

STATE OF NEBRASKA
COUNTY OF LANCASTER

ON THIS 5th DAY OF May 1993, BEFORE ME, THE UNDERSIGNED, A NOTARY PUBLIC, DULY COMMISSIONED, QUALIFIED IN AND FOR SAID COUNTY AND STATE, PERSONALLY CAME MAYOR MIKE JOHANNIS WHO IS PERSONALLY KNOWN TO ME TO BE THE IDENTICAL PERSON WHOSE NAME IS AFFIXED TO THIS PLAT AS THE MAYOR OF THE CITY OF LINCOLN, NEBRASKA, A MUNICIPAL CORPORATION AND HE ACKNOWLEDGES THE EXECUTION THEREOF TO BE HIS VOLUNTARY ACT AND DEED AND THE VOLUNTARY ACT AND DEED OF THE CITY OF LINCOLN.

MY COMMISSION EXPIRES ON THE 20 DAY OF December 1993 A.D.

[Signature]
NOTARY PUBLIC

APPROVAL

THE FOREGOING PLAT WAS APPROVED BY THE LINCOLN CITY-LANCASTER COUNTY PLANNING COMMISSION ON THIS 17th DAY OF February 1993.

ATTEST: *[Signature]*
CHAIR

SHEET 10 OF 10

A-307
A-307A
A-308
A-308A
A-309
A-309A

11:33 PM '93
INST. NO 93
43653

2245