



DEED 2017027700



APR 12 2017 14:47 P 31

Deed  
31/14 FEE 190.00 FB 01-60000 (old) new  
BKP 23-1511<sup>LE</sup> EXAM

IND SCAN PRF  
0

Received - DIANE L. BATTIATO  
Register of Deeds, Douglas County, NE  
4/12/2017 14:47:13.00



2017027700

THIS PAGE INCLUDED FOR INDEXING  
PAGE DOWN FOR BALANCE OF INSTRUMENT

RETURN TO: #16

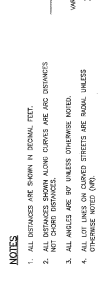
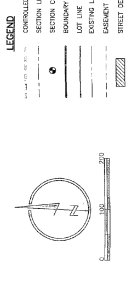
CHECK NUMBER

chg - ten



# WEST FARM

INCORPORATED AS PART OF THE EAST HALF SECTION 28 TOWNSHIP 13 NORTH RANGE 11 EAST OF THE 6TH P.M. IN DOUGLAS COUNTY, NEBRASKA, EXCEPT THE SOUTHEAST QUARTER OF THE SOUTHWEST QUARTER



**SECTION CORNER LIES**

THE CORNER OF THE SECTION 28, TOWNSHIP 13 NORTH, RANGE 11 EAST, OF THE 6TH P.M. IN DOUGLAS COUNTY, NEBRASKA, IS LOCATED AT THE INTERSECTION OF THE SECTION LINE AND THE EAST LINE OF THE SECTION 28. THE CORNER IS MARKED BY A CONCRETE MONUMENT.

**CONTROLLING CURVE TABLE**

CURVE #	ANGLE	CHORD LENGTH	CHORD BEARS	CHORD BEARS
1	120.00	100.00	100.00	100.00
2	120.00	100.00	100.00	100.00
3	120.00	100.00	100.00	100.00
4	120.00	100.00	100.00	100.00
5	120.00	100.00	100.00	100.00
6	120.00	100.00	100.00	100.00
7	120.00	100.00	100.00	100.00
8	120.00	100.00	100.00	100.00
9	120.00	100.00	100.00	100.00
10	120.00	100.00	100.00	100.00
11	120.00	100.00	100.00	100.00
12	120.00	100.00	100.00	100.00

**SECTION CORNER LIES**

THE CORNER OF THE SECTION 28, TOWNSHIP 13 NORTH, RANGE 11 EAST, OF THE 6TH P.M. IN DOUGLAS COUNTY, NEBRASKA, IS LOCATED AT THE INTERSECTION OF THE SECTION LINE AND THE EAST LINE OF THE SECTION 28. THE CORNER IS MARKED BY A CONCRETE MONUMENT.

**SECTION CORNER LIES**

THE CORNER OF THE SECTION 28, TOWNSHIP 13 NORTH, RANGE 11 EAST, OF THE 6TH P.M. IN DOUGLAS COUNTY, NEBRASKA, IS LOCATED AT THE INTERSECTION OF THE SECTION LINE AND THE EAST LINE OF THE SECTION 28. THE CORNER IS MARKED BY A CONCRETE MONUMENT.

**SECTION CORNER LIES**

THE CORNER OF THE SECTION 28, TOWNSHIP 13 NORTH, RANGE 11 EAST, OF THE 6TH P.M. IN DOUGLAS COUNTY, NEBRASKA, IS LOCATED AT THE INTERSECTION OF THE SECTION LINE AND THE EAST LINE OF THE SECTION 28. THE CORNER IS MARKED BY A CONCRETE MONUMENT.

**SECTION CORNER LIES**

THE CORNER OF THE SECTION 28, TOWNSHIP 13 NORTH, RANGE 11 EAST, OF THE 6TH P.M. IN DOUGLAS COUNTY, NEBRASKA, IS LOCATED AT THE INTERSECTION OF THE SECTION LINE AND THE EAST LINE OF THE SECTION 28. THE CORNER IS MARKED BY A CONCRETE MONUMENT.

**SECTION CORNER LIES**

THE CORNER OF THE SECTION 28, TOWNSHIP 13 NORTH, RANGE 11 EAST, OF THE 6TH P.M. IN DOUGLAS COUNTY, NEBRASKA, IS LOCATED AT THE INTERSECTION OF THE SECTION LINE AND THE EAST LINE OF THE SECTION 28. THE CORNER IS MARKED BY A CONCRETE MONUMENT.

**SECTION CORNER LIES**

THE CORNER OF THE SECTION 28, TOWNSHIP 13 NORTH, RANGE 11 EAST, OF THE 6TH P.M. IN DOUGLAS COUNTY, NEBRASKA, IS LOCATED AT THE INTERSECTION OF THE SECTION LINE AND THE EAST LINE OF THE SECTION 28. THE CORNER IS MARKED BY A CONCRETE MONUMENT.

**SECTION CORNER LIES**

THE CORNER OF THE SECTION 28, TOWNSHIP 13 NORTH, RANGE 11 EAST, OF THE 6TH P.M. IN DOUGLAS COUNTY, NEBRASKA, IS LOCATED AT THE INTERSECTION OF THE SECTION LINE AND THE EAST LINE OF THE SECTION 28. THE CORNER IS MARKED BY A CONCRETE MONUMENT.

**SECTION CORNER LIES**

THE CORNER OF THE SECTION 28, TOWNSHIP 13 NORTH, RANGE 11 EAST, OF THE 6TH P.M. IN DOUGLAS COUNTY, NEBRASKA, IS LOCATED AT THE INTERSECTION OF THE SECTION LINE AND THE EAST LINE OF THE SECTION 28. THE CORNER IS MARKED BY A CONCRETE MONUMENT.

**SECTION CORNER LIES**

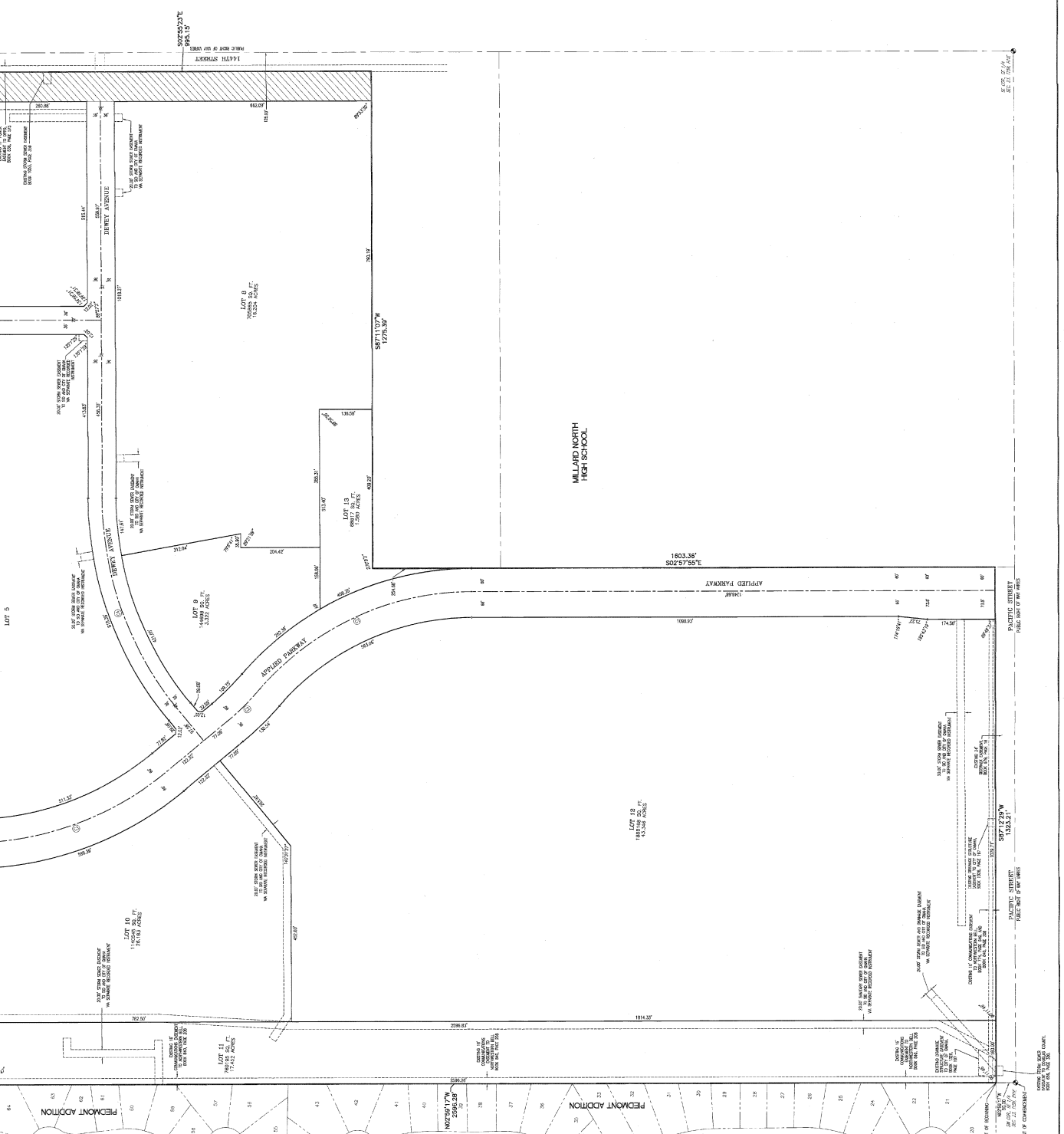
THE CORNER OF THE SECTION 28, TOWNSHIP 13 NORTH, RANGE 11 EAST, OF THE 6TH P.M. IN DOUGLAS COUNTY, NEBRASKA, IS LOCATED AT THE INTERSECTION OF THE SECTION LINE AND THE EAST LINE OF THE SECTION 28. THE CORNER IS MARKED BY A CONCRETE MONUMENT.

**SECTION CORNER LIES**

THE CORNER OF THE SECTION 28, TOWNSHIP 13 NORTH, RANGE 11 EAST, OF THE 6TH P.M. IN DOUGLAS COUNTY, NEBRASKA, IS LOCATED AT THE INTERSECTION OF THE SECTION LINE AND THE EAST LINE OF THE SECTION 28. THE CORNER IS MARKED BY A CONCRETE MONUMENT.

**SECTION CORNER LIES**

THE CORNER OF THE SECTION 28, TOWNSHIP 13 NORTH, RANGE 11 EAST, OF THE 6TH P.M. IN DOUGLAS COUNTY, NEBRASKA, IS LOCATED AT THE INTERSECTION OF THE SECTION LINE AND THE EAST LINE OF THE SECTION 28. THE CORNER IS MARKED BY A CONCRETE MONUMENT.



**APPROVAL OF THE VILLAGE ENGINEER OF THE VILLAGE OF BOYS TOWN**

I HEREBY APPROVE THIS PLAN OF WEST FARM, LOTS 1 THROUGH 13, INCLOSURE 13, AND THE VILLAGE ENGINEER OF BOYS TOWN HAS REVIEWED AND APPROVED THIS PLAN.

*[Signature]* 4-4-17

**APPROVAL OF VILLAGE OF BOYS TOWN PLANNING COMMISSION**

THIS PLAN OF WEST FARM, LOTS 1 THROUGH 13, INCLOSURE 13, WAS APPROVED BY THE VILLAGE OF BOYS TOWN PLANNING COMMISSION ON 4-4-17.

*[Signature]* 4-4-17

**APPROVAL OF THE VILLAGE BOARD**

THIS PLAN OF WEST FARM, LOTS 1 THROUGH 13, INCLOSURE 13, WAS APPROVED BY THE VILLAGE BOARD OF BOYS TOWN ON 4-4-17.

33  
*[Signature]*  
 PRESIDENT  
*[Signature]*  
 VILLAGE CLERK

**REVIEW BY DOUGLAS COUNTY ENGINEER**

THIS PLAN OF WEST FARM, LOTS 1 THROUGH 13, INCLOSURE 13, WAS REVIEWED BY THE DOUGLAS COUNTY ENGINEER ON 4-4-17.

3/9/2017  
*[Signature]*  
 COUNTY ENGINEER