



WILBER.

MAP
 SHOWING CORPORATE LIMITS
 OF
WILBER, SALINE CO. NEBRASKA
 PROPOSED CHANGE IN BOUNDARY

Scale 1 inch = 300 ft

JAN 10 1911
 9
 affdels

Case No. 7221 School Dist. No. 1, Saline Co., Neb.
 EXHIBIT NO. 3
 REC. 11 1907

Center Sec. 15

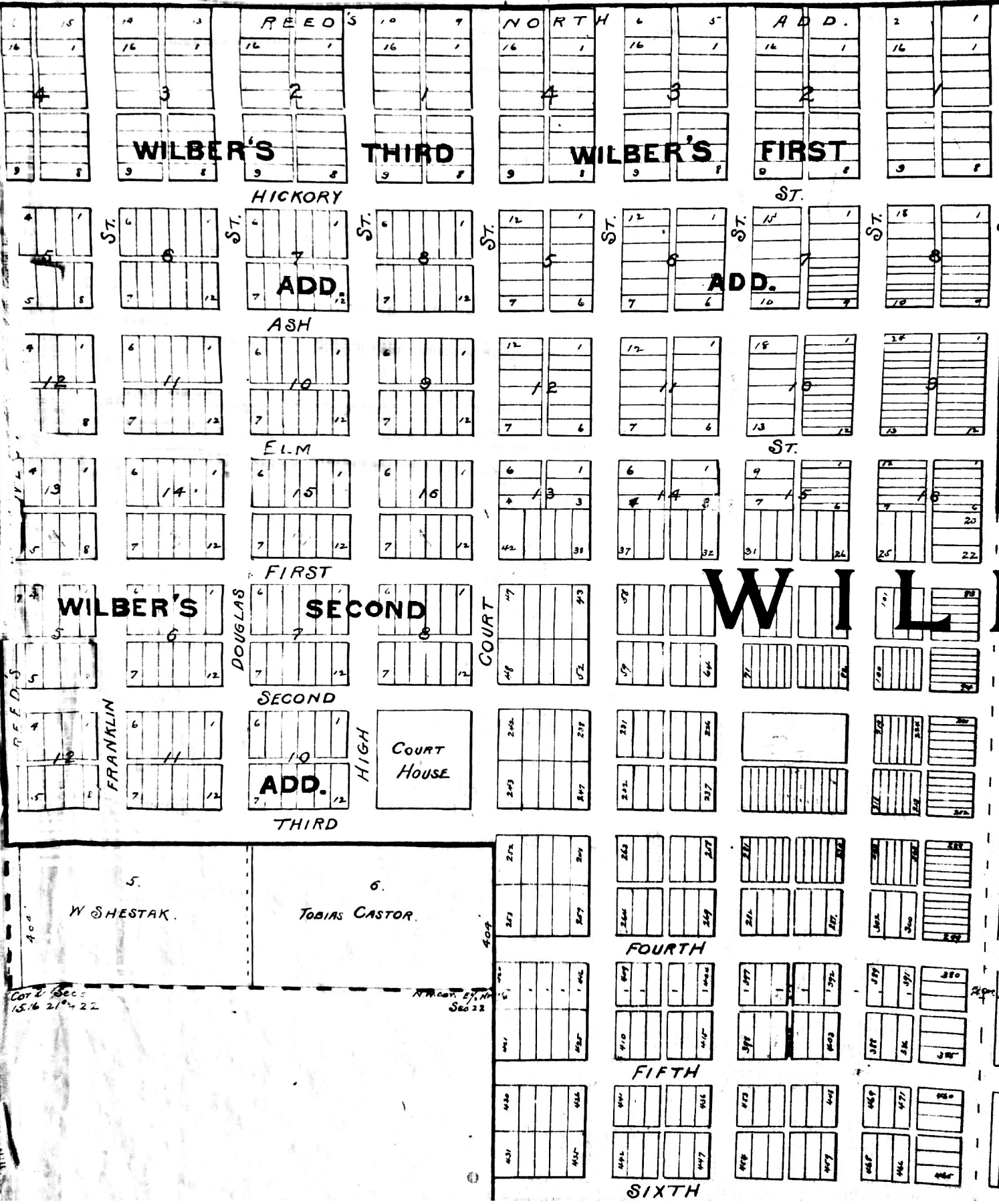


Table with 2 columns and 12 rows of numbers:

29	1
27	1
26	1
25	1
24	1
23	1
22	1
21	1
20	1
19	1
18	1
17	1
16	1
15	1
14	1
13	1
12	1

Table with 2 columns and 11 rows of numbers:

11	1
10	1
9	1
8	1
7	1
6	1
5	1
4	1
3	1
2	1
1	1

Center Secs
15, 16, 21, 22

N.W. corner of NW
Sec 22

St. Louis and
Cincinnati
R. R.
20'