

# WILBER

SALINE CO. NEB.



Surveyed and drawn by Angelo B. Smith

The Town of Wilber is situated in the 12th Range and 10th Section of the 6th Township and 10th Range of the 10th Meridian, Saline County, Nebraska. The streets are laid out in a grid pattern with the following specifications:

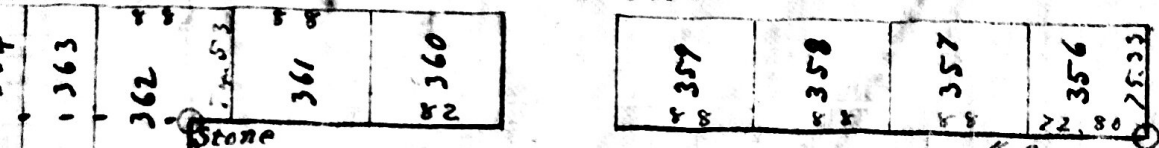
- The streets are 66 feet wide.
- The lots are 66 feet wide and 132 feet deep.
- The streets are named after the cardinal directions: Main, School, Harris, Doane, Ames, East, and Railroad.
- The horizontal streets are named First through Eighth.
- The streets are laid out in a grid pattern with the following specifications:

Scale 1" = 100 feet

Angelo B. Smith

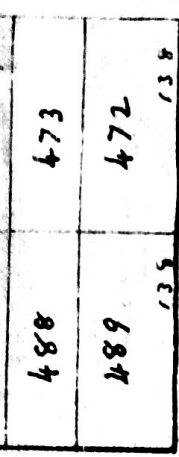


STREET

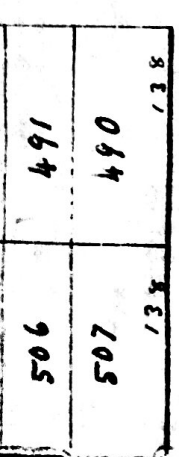


Scale 200 feet = 1 inch

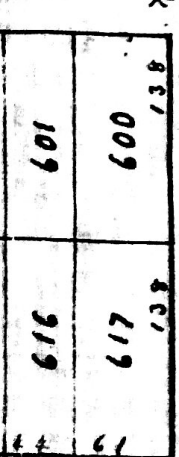
ET



T



T



ET

The Town of Wilber is situated on the S.W. 1/4 of the S.E. 1/4 & the S.E. 1/4 of the S.W. 1/4 of section 15 & the N.E. 1/4 the N.W. 1/4 & the W. 1/4 feet of the N.W. 1/4 of the N.E. 1/4 of section 22 all in Township 6 North of Range 4 East of the 6th P.M. & being in Saline County Neb.

The streets and alleys run parallel with and at right angles to the quarter section line running N & S through a section 22. The width of all streets is each 20 feet except Eighth street which is made in feet and decimals on the map. All alleys are each 12 feet wide. Ordinary sized lots are 132 by 44 feet. Business lots are each 132 by 22 feet. All lots not regular in size dimensions are expressed or indicated in feet on the map. Each lot bears its own number and each street and alley its own name, number or letter. Stones are permanently planted as designated on the map. I hereby certify that the foregoing map and field notes are correct and in accordance with a survey made by me in Nov. 1876.

*Archie W. Smith*  
 Surveyor  
 Plattsmouth Neb.



WALTER B...

SALINE CO.

1/8 SEC. COR. STONE

137.20
42
41
40
39
38
136.39

1/8 SEC. LIME

37
36
35
34
33
32
135.26

31
30
29
28
27
26
134.13

25
24
23
22
21
20
133.90

STONE

Score

Score

FIRST

Score

Score

138	138
48	47
49	46
50	45
51	44
52	43

59	58
60	57
61	56
62	55
63	54
64	53

71	70
72	69
73	68
74	67
75	66
76	65
77	64
78	63
79	62
80	61
81	60
82	59

100	101
99	102
98	103
97	104
96	105
95	106
94	107
93	108
92	109
91	110
90	111
89	112

STONE

Score

SECOND

Score

138	138
243	242
244	241
245	240
246	239
247	238

232	231
233	230
234	229
235	228
236	227
237	226

225  
RESERVED  
HOTEL  
SQUARE

219	201
220	202
221	203
222	204
223	205
224	206
218	207
217	208
216	209
215	210
214	211
213	212

STONE

Score

THIRD

Score

S. STREET

L.R.R. in N.H.B.

1/8 SEC. COR. STONE  
CLASS. 1 S. 4

12260



Filed March 10-1873 12m

### WILBER

The Town of Wilber is situated on "the S W 1/4 of the S E 1/4 and the S E 1/4 of the S W 1/4 of Section 15 and the N E 1/4 of the N W 1/4 and the N 1/4 of the N W 1/4 of the N E 1/4 of Section 22 all in Township 6 North of Range 4 East of the 6<sup>th</sup> P.M. and being in Saline County Nebraska. The Streets and alleys run parallel with and at right angles to the quarter Section line running N and S. through Section 22. the width of each Street is 70 feet except eighth Street which is marked in feet and decimals on the map. All alleys are each 12 feet wide. Ordinary sized lots are 132 by 44 feet. Business lots are each 132 by 22 feet. All lots not regular in size; dimensions are expressed or indicated in feet on the map. Each lot bears its own number, and each Street and alley, its own name, number or letter. Stones are permanently planted as designated on the map."

I hereby certify the foregoing Map and Field Notes are correct and in accordance with a Survey made by me in November 1872

Anselmo B. Smith  
Surveyor

Plattsmouth Neb.

We the undersigned do hereby certify that we are the present owners of the land described in the foregoing Field Notes of the Town of Wilber and that the disposition of said land as shown by the above Map and Notes is in accordance with our design and intention.

In Witness whereof we have hereunto set our hands and seals  
 In presence of  
 James L. Young  
 Tobias Castor  
 C. D. Wilber  
 A. M. Wilber  
 Jacob Mowery  
 Margaret <sup>her</sup> Mowery  
 mark

State of Illinois }  
 Will County } S. Before me a Notary Public in and for said County this day personally appeared C. D. Wilber and A. M. Wilber his wife who are personally known to me to be the identical persons whose names are affixed to the Map of Wilber and acknowledged the same to be their voluntary act and deed for the purposes therein set forth.

In testimony whereof I hereunto subscribe my name and affix my official seal this thirteenth day of January A.D. 1873  
 James L. Young  
 Notary Public

State of Nebraska }  
 Saline County } S. Before me the a Justice of the Peace in and for said County this day personally appeared Jacob Mowery and Margaret Mowery husband and wife who are personally known to me to be the identical persons whose names are affixed to the Map of the



State Bank of Nebraska at Leite

Town of Hilber and acknowledged the same to be their voluntary act and deed for the purposes therein set forth.

In testimony whereof I hereunto subscribe my name this 21<sup>st</sup> day of February A.D. 1873

Samuel W. Davis  
Justice of the Peace