

HUNTINGTON PARK

PART OF THE SW 1/4 OF SEC. 35, T44N, R12E OF THE 6TH PM,
SARBY COUNTY, NEBRASKA

HUNTER'S CERTIFICATE

I hereby certify that I have made a ground survey of the subdivision described herein and that temporary monuments have been placed as shown on the written plat and that a bond has been furnished to the County of Sarpy to insure placing of permanent monuments and stakes at all corners of all lots, streets, avenues, angle points, and ends of all curves in the Huntington Park, a subdivision located in the SW 1/4 of Section 35, Township 44 North, Range 12 East of the 6th P.M., Sarpy County, Nebraska, more particularly described as follows:

Beginning at the Northeast corner of said Section 35; thence 90°00'00" E, (assumed bearing) along the West line of said Section 35; a distance of 1041.38 feet; thence 89°21'12" E, along the South line of said Section 35; a distance of 200.00 feet to the Southeast corner of said Section 35; thence 89°21'12" E, along the East line of said Section 35; a distance of 150.00 feet to the Northeast corner of said Section 35; thence 89°21'12" E, along the North line of said Section 35; a distance of 200.00 feet to a point on said West line of Section 35; thence 90°00'00" E, along said West line of Section 35; a distance of 173.82 feet to a point on the extended Southerly right-of-way line of State Highway 470; thence 89°21'12" E, along said extended Southerly right-of-way line of State Highway 470; a distance of 49.00 feet; thence 89°21'12" E, along said Southerly right-of-way line of State Highway 470; a distance of 161.53 feet; thence 89°21'12" E, along said Southerly right-of-way line of State Highway 470; a distance of 113.30 feet to a point on the East line of said SW 1/4 of Section 35; thence 89°21'12" E, along said East line of the SW 1/4 of Section 35; a distance of 176.72 feet to a point on the Westerly right-of-way line of the Chicago, Rock Island and Pacific Railroad; thence 89°21'12" E, along said Westerly right-of-way line of the Chicago, Rock Island and Pacific Railroad; a distance of 1417.75 feet to a point on the South line of said Section 35; thence 89°21'12" E, along said South line of Section 35; a distance of 200.00 feet to the Point of Beginning.

Also a tract of land in said SW 1/4 of Section 35, more particularly described as follows:

Beginning at the Southeast corner of said SW 1/4 of Section 35; thence 89°21'12" E, (assumed bearing) along the South line of Section 35; a distance of 113.30 feet to a point on the Southerly right-of-way line of said Chicago, Rock Island and Pacific Railroad; thence 89°21'12" E, along said Southerly right-of-way line of the Chicago, Rock Island and Pacific Railroad; a distance of 365.00 feet to a point on said East line of the SW 1/4 of Section 35; thence 89°21'12" E, along said East line of the SW 1/4 of Section 35; a distance of 160.40 feet to the Point of Beginning.

INDICATION

Know all men by these presents that we, Charles C. Smith and Nellie M. Smith, husband and wife and Nicholas Senz Hospital of Omaha, a Nebraska Corporation, and the Omaha National Bank, a Nebraska Corporation, and William E. Condon, Trustee (hereinafter), of the property described in the certification of survey and embraced within the plat, have caused said land to be re-subdivided into lots and streets, to be numbered and named as shown, and have caused the same to be recorded in the public records of Sarpy County, Nebraska, and we do hereby certify and approve of the disposition of our property as shown on this plat, and we do hereby dedicate to the public for public use the streets as shown on this plat. We also dedicate the easements shown hereon for the use indicated. We do further grant a perpetual license in favor of and granted in accordance to the public for public use the easements as shown on this plat. We also dedicate the easements shown hereon for the use indicated. We do further grant a perpetual license in favor of and granted in accordance to the public for public use the easements as shown on this plat. We also dedicate the easements shown hereon for the use indicated. We do further grant a perpetual license in favor of and granted in accordance to the public for public use the easements as shown on this plat. We also dedicate the easements shown hereon for the use indicated.

APPROVAL OF FAMILIAR PLANNING COMMISSION:
THIS SUBDIVISION OF HUNTINGTON PARK WAS APPROVED BY THE FAMILIAR PLANNING COMMISSION THIS 20th DAY OF February, A.D., 1973.

APPROVAL OF COUNTY SUPERVISOR:
I HEREBY APPROVE OF THIS PLAN OF HUNTINGTON PARK THE LOTS NUMBERED AS SHOWN ON THIS 22nd DAY OF February, A.D., 1973.

COUNTY TREASURER'S CERTIFICATE:
THIS IS TO CERTIFY THAT I HAVE NO RECORD OR SPECIAL TAXES DUE OR DELINQUENT AGAINST THE PROPERTY DESCRIBED IN THE HUNTER'S CERTIFICATE AND SHOWN AS SHOWN BY THE RECORDS OF THIS OFFICE.

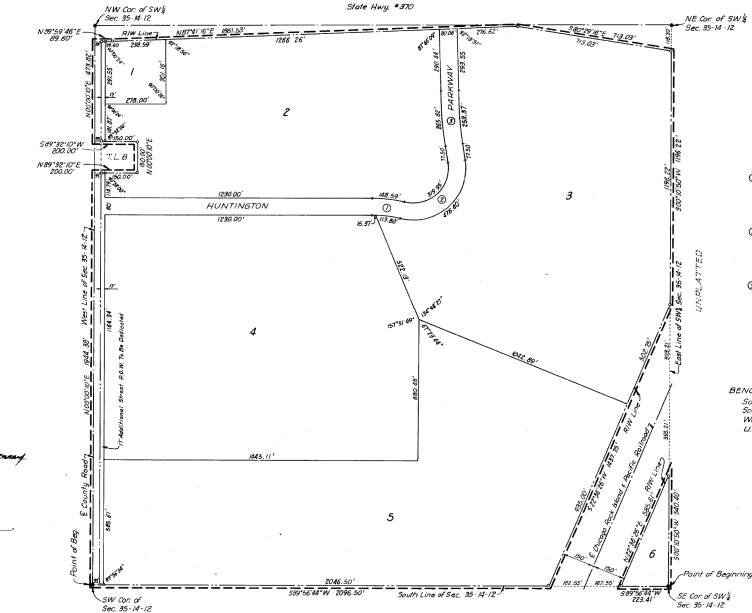
DATE: Feb. 26, 1973

ACCEPTANCE BY FAMILIAR CITY COUNCIL:
THIS SUBDIVISION OF HUNTINGTON PARK WAS APPROVED BY THE CITY COUNCIL OF THE CITY OF FAMILIAR, NEBRASKA, ON THIS 22nd DAY OF February, A.D., 1973, IN ACCORDANCE WITH THE STATE STATUTES OF NEBRASKA.

ATTEST:
CITY CLERK: _____ MAYOR: _____

APPROVAL OF FAMILIAR CITY ENGINEER:
THIS SUBDIVISION OF HUNTINGTON PARK WAS APPROVED BY THE FAMILIAR CITY ENGINEER THIS 20th DAY OF April, A.D., 1973.

HUNTERSON BERNARD AND BICKHAMSON:
FAMILIAR CITY ENGINEER



E CURVE DATA

1	Δ 131°11'37"
	R 605.26'
	T 70.00'
	L 129.36'
	D 9.46584'
2	Δ 112°03'07"
	R 203.60'
	T 302.46'
	L 398.18'
	D 26.41265'
3	Δ 88°46'27"
	R 1894.83'
	T 180.00'
	L 524.46'
	D 3.38130'

BENCH MARK
Southwest Cor. of R.O.W. marker on South side of State Hwy. #370 120' West of Gold Coast Road U.S.C. & G.S. Datum Elev. 115.23

ACKNOWLEDGEMENT OF NOTARY
STATE OF NEBRASKA)
COUNTY OF SARPY)
I, _____, Notary Public, do hereby certify that the foregoing is a true and correct copy of the original as the same appears in my files and records.

Witness my hand and Notarial Seal at _____ in said County the _____ day and year last above written.

My Commission expires the _____ day of _____, 1973.

ACKNOWLEDGEMENT OF NOTARY
STATE OF NEBRASKA)
COUNTY OF SARPY)
I, _____, Notary Public, do hereby certify that the foregoing is a true and correct copy of the original as the same appears in my files and records.

Witness my hand and Notarial Seal at _____ in said County the _____ day and year last above written.

My Commission expires the _____ day of _____, 1973.

FILED FOR RECORD 4/27/73 IN BOOK 50 Plat Sub 3, 75
FILED Carl J. Hillis DEPUTY CLERK OF SHERIFF, SARBY COUNTY NEB.
Desk. Book 94 Page 333

ELLIOTT & BLACK
DEVELOPER
CG SWITZER ENGINEERING COMPANY
8018 PARK VIEW BLVD. OMAHA, NEBR.
FINAL PLAT
HUNTINGTON PARK