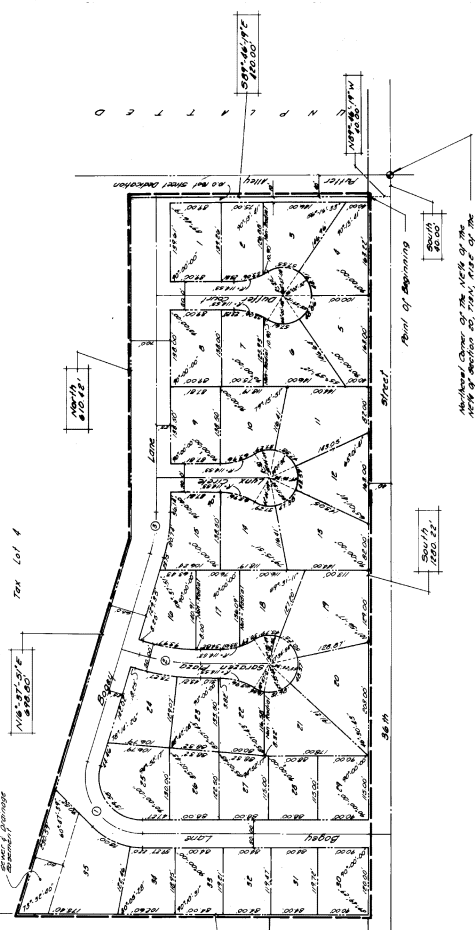


COUNTRY CLUB VIEW

Lots 1 thru 55, inclusive
 being a platting of the lot 5 in the NW 1/4 of the NW 1/4 of Section 20,
 T2N, R3E of the 6th P.M., Sarpy County, Nebraska.

PLAT VIEW



NOTE: Dimensions Shown on Curves are All Dimensions

Lot	Area
1	1.0000
2	1.0000
3	1.0000
4	1.0000
5	1.0000
6	1.0000
7	1.0000
8	1.0000
9	1.0000
10	1.0000
11	1.0000
12	1.0000
13	1.0000
14	1.0000
15	1.0000
16	1.0000
17	1.0000
18	1.0000
19	1.0000
20	1.0000
21	1.0000
22	1.0000
23	1.0000
24	1.0000
25	1.0000
26	1.0000
27	1.0000
28	1.0000
29	1.0000
30	1.0000
31	1.0000
32	1.0000
33	1.0000
34	1.0000
35	1.0000
36	1.0000
37	1.0000
38	1.0000
39	1.0000
40	1.0000
41	1.0000
42	1.0000
43	1.0000
44	1.0000
45	1.0000
46	1.0000
47	1.0000
48	1.0000
49	1.0000
50	1.0000
51	1.0000
52	1.0000
53	1.0000
54	1.0000
55	1.0000

See # 58149

SURVEYOR'S CERTIFICATE

I, the undersigned, registered land surveyor in the State of Nebraska, do hereby certify that I have made a personal survey of the subdivision described in the plat, and that permanent markers have been placed on the boundary and that iron pipes have been placed at all corners of the lots shown on the plat. The plat is a true and correct copy of the original plat on file in my office, and the same is a true and correct copy of the original plat on file in the office of the County Clerk of Sarpy County, Nebraska, and is a true and correct copy of the original plat on file in the office of the County Clerk of Sarpy County, Nebraska. The plat is a true and correct copy of the original plat on file in my office, and the same is a true and correct copy of the original plat on file in the office of the County Clerk of Sarpy County, Nebraska, and is a true and correct copy of the original plat on file in the office of the County Clerk of Sarpy County, Nebraska.

James B. Johnson
 Registered Land Surveyor

RESOLUTION

BEFORE ME, the undersigned authority, on this 17th day of June, 1974, personally appeared _____, known to me to be the person whose name is subscribed to the foregoing plat, and acknowledged to me that he executed the same for the purposes and consideration therein expressed. I, the undersigned authority, do hereby certify that the foregoing plat is a true and correct copy of the original plat on file in my office, and the same is a true and correct copy of the original plat on file in the office of the County Clerk of Sarpy County, Nebraska, and is a true and correct copy of the original plat on file in the office of the County Clerk of Sarpy County, Nebraska.

Notary Public, _____

ACKNOWLEDGMENT OF NOTARY

STATE OF NEBRASKA) SS. On this 17th day of June, 1974, before me, a Notary Public, duly commissioned and qualified in and for said county, personally appeared _____, known to me to be the person whose name is subscribed to the foregoing plat, and acknowledged to me that he executed the same for the purposes and consideration therein expressed. I, the undersigned authority, do hereby certify that the foregoing plat is a true and correct copy of the original plat on file in my office, and the same is a true and correct copy of the original plat on file in the office of the County Clerk of Sarpy County, Nebraska, and is a true and correct copy of the original plat on file in the office of the County Clerk of Sarpy County, Nebraska.

APPROVAL OF COUNTY BOARD OF COMMISSIONERS

THIS PLAT OF COUNTY CLUB VIEW WAS APPROVED BY THE SARPY COUNTY BOARD OF COMMISSIONERS THIS 17th DAY OF JUNE, 1974.

Notary Public, _____

APPROVAL OF SARPY COUNTY PLANNING COMMISSION

THIS PLAT OF COUNTY CLUB VIEW WAS APPROVED BY THE SARPY COUNTY PLANNING COMMISSION THIS 17th DAY OF JUNE, 1974.

Notary Public, _____

APPROVAL OF SARPY COUNTY BUILDING INSPECTOR

THIS PLAT OF COUNTY CLUB VIEW WAS APPROVED BY THE SARPY COUNTY BUILDING INSPECTOR THIS 17th DAY OF JUNE, 1974.

Notary Public, _____

APPROVAL OF SARPY COUNTY SURVEYOR

THIS PLAT OF COUNTY CLUB VIEW WAS APPROVED BY THE SARPY COUNTY SURVEYOR THIS 17th DAY OF JUNE, 1974.

Notary Public, _____

James B. Johnson
 Registered Land Surveyor

SCALE	1"=60'
DATE	6-17-74
DRAWN BY	J.B.
CHECKED BY	J.B.
REVISION	

COUNTRY CLUB VIEW

THOMPSON, DRESSSEN & DORNER
 Consulting Engineers & Land Surveyors



MAP 75-2

76