

**LEGAL DESCRIPTION
PARCEL "A"**

A LEGAL DESCRIPTION FOR A TRACT OF LAND COMPOSED OF A PORTION OF LOT 1 BLOCK 11, ASHLEY HEIGHTS ADDITION, LOCATED IN THE NORTHEAST QUARTER OF SECTION 18, TOWNSHIP 10 NORTH, RANGE 6 EAST OF THE 6TH P.M., CITY OF LINCOLN, LANCASTER COUNTY, NEBRASKA, AND MORE PARTICULARLY DESCRIBED AS FOLLOWS:

COMMENCING AT THE SOUTHWEST CORNER OF SAID LOT 1, THENCE ON AN ASSUMED BEARING OF NORTH 89 DEGREES 13 MINUTES 18 SECONDS EAST ALONG THE SOUTH LINE OF SAID LOT 1, SAID LINE BEING THE NORTH RIGHT-OF-WAY LINE OF WEST HUNTINGTON AVENUE, A DISTANCE OF 14.26 FEET TO **THE TRUE POINT OF BEGINNING**, THENCE CONTINUING NORTH 00 DEGREES 46 MINUTES 42 SECONDS WEST ~~ALONG THE SOUTH LINE OF SAID LOT 1~~, A DISTANCE OF 71.00 FEET TO A POINT, THENCE NORTH 89 DEGREES 13 MINUTES 18 SECONDS EAST, A DISTANCE OF 40.00 FEET TO A POINT, THENCE SOUTH 00 DEGREES 46 MINUTES 42 SECONDS EAST, A DISTANCE OF 71.00 FEET TO A POINT OF INTERSECTION WITH THE SOUTH LINE OF SAID LOT 1, THENCE SOUTH 89 DEGREES 13 MINUTES 18 SECONDS WEST ALONG THE SOUTH LINE OF SAID LOT 1, SAID LINE BEING THE NORTH RIGHT-OF-WAY LINE OF HUNTINGTON AVENUE, A DISTANCE OF 40.00 FEET TO THE TRUE POINT OF BEGINNING, SAID TRACT CONTAINS A CALCULATED AREA OF 2,840.00 SQUARE FEET MORE OR LESS.

**LEGAL DESCRIPTION
PARCEL "B"**

A LEGAL DESCRIPTION FOR A TRACT OF LAND COMPOSED OF A PORTION OF OUTLOT "B", ASHLEY HEIGHTS ADDITION, LOCATED IN THE NORTHEAST QUARTER OF SECTION 18, TOWNSHIP 10 NORTH, RANGE 6 EAST OF THE 6TH P.M., CITY OF LINCOLN, LANCASTER COUNTY, NEBRASKA, AND MORE PARTICULARLY DESCRIBED AS FOLLOWS:

COMMENCING AT THE NORTHWEST CORNER OF SAID OUTLOT "B", THENCE ON AN ASSUMED BEARING OF NORTH 89 DEGREES 13 MINUTES 18 SECONDS EAST ALONG THE NORTH LINE OF SAID OUTLOT "B", SAID LINE BEING THE SOUTH RIGHT-OF-WAY LINE OF HUNTINGTON AVENUE, A DISTANCE OF 15.01 FEET TO **THE TRUE POINT OF BEGINNING**, THENCE CONTINUING NORTH 89 DEGREES 13 MINUTES 18 SECONDS EAST ALONG THE NORTH LINE OF SAID OUTLOT "B", A DISTANCE OF 40.00 FEET TO A POINT, THENCE SOUTH 00 DEGREES 46 MINUTES 42 SECONDS EAST, A DISTANCE OF 35.38 FEET TO A POINT, THENCE SOUTH 89 DEGREES 13 MINUTES 18 SECONDS WEST, A DISTANCE OF 40.00 FEET TO A POINT, THENCE NORTH 00

DEGREES 46 MINUTES 42 SECONDS WEST, A DISTANCE OF 35.38 FEET TO THE TRUE POINT OF BEGINNING, SAID TRACT CONTAINS A CALCULATED AREA OF 1,414.02 SQUARE FEET MORE OR LESS.

**LEGAL DESCRIPTION
PARCEL "C"**

A LEGAL DESCRIPTION FOR A TRACT OF LAND COMPOSED OF A PORTION OF OUTLOT "D", ASHLEY HEIGHTS ADDITION, LOCATED IN THE NORTHEAST QUARTER OF SECTION 18, TOWNSHIP 10 NORTH, RANGE 6 EAST OF THE 6TH P.M., CITY OF LINCOLN, LANCASTER COUNTY, NEBRASKA, AND MORE PARTICULARLY DESCRIBED AS FOLLOWS:

COMMENCING AT A SOUTHEAST CORNER OF SAID OUTLOT "D", SAID POINT BEING THE SOUTHWEST CORNER OF LOT 1 BLOCK 9, ASHLEY HEIGHTS ADDITION, SAID POINT BEING **THE TRUE POINT OF BEGINNING**, THENCE ON AN ASSUMED BEARING OF SOUTH 89 DEGREES 08 MINUTES 55 SECONDS WEST ALONG THE SOUTH LINE OF SAID OUTLOT "D", SAID LINE BEING THE NORTH RIGHT-OF-WAY LINE OF HUNTINGTON AVENUE, A DISTANCE OF 20.00 FEET TO A POINT, THENCE NORTH 00 DEGREES 51 MINUTES 05 SECONDS WEST, A DISTANCE OF 120.00 FEET TO A POINT OF CURVATURE, THENCE ALONG A CURVE IN A CLOCKWISE DIRECTION HAVING A RADIUS OF 110.00 FEET, ARC LENGTH OF 172.22 FEET, DELTA ANGLE OF 89 DEGREES 42 MINUTES 15 SECONDS, A CHORD BEARING OF NORTH 44 DEGREES 00 MINUTES 03 SECONDS EAST, AND A CHORD LENGTH OF 155.16 FEET TO A POINT OF TANGENCY, THENCE NORTH 88 DEGREES 51 MINUTES 10 SECONDS EAST, A DISTANCE OF 38.00 FEET TO A POINT, THENCE SOUTH 01 DEGREES 08 MINUTES 50 SECONDS EAST, A DISTANCE OF 20.00 FEET TO A POINT, THENCE SOUTH 88 DEGREES 51 MINUTES 10 SECONDS WEST, A DISTANCE OF 38.00 FEET TO A POINT OF CURVATURE, THENCE ALONG A CURVE HAVING IN A COUNTER CLOCKWISE DIRECTION HAVING A RADIUS OF 90.00 FEET, ARC LENGTH OF 140.91 FEET, DELTA ANGLE OF 89 DEGREES 42 MINUTES 15 SECONDS, A CHORD BEARING OF SOUTH 44 DEGREES 00 MINUTES 03 SECONDS WEST, AND A CHORD LENGTH OF 126.95 FEET TO A POINT OF TANGENCY, SAID POINT BEING A SOUTH CORNER OF SAID OUTLOT "D", THENCE SOUTH 00 DEGREES 51 MINUTES 05 SECONDS EAST ALONG A EAST LINE OF SAID OUTLOT "D", A DISTANCE OF 120.00 FEET TO THE TRUE POINT OF BEGINNING, SAID TRACT CONTAINS A CALCULATED AREA OF 6,291.26 SQUARE FEET MORE OR LESS.

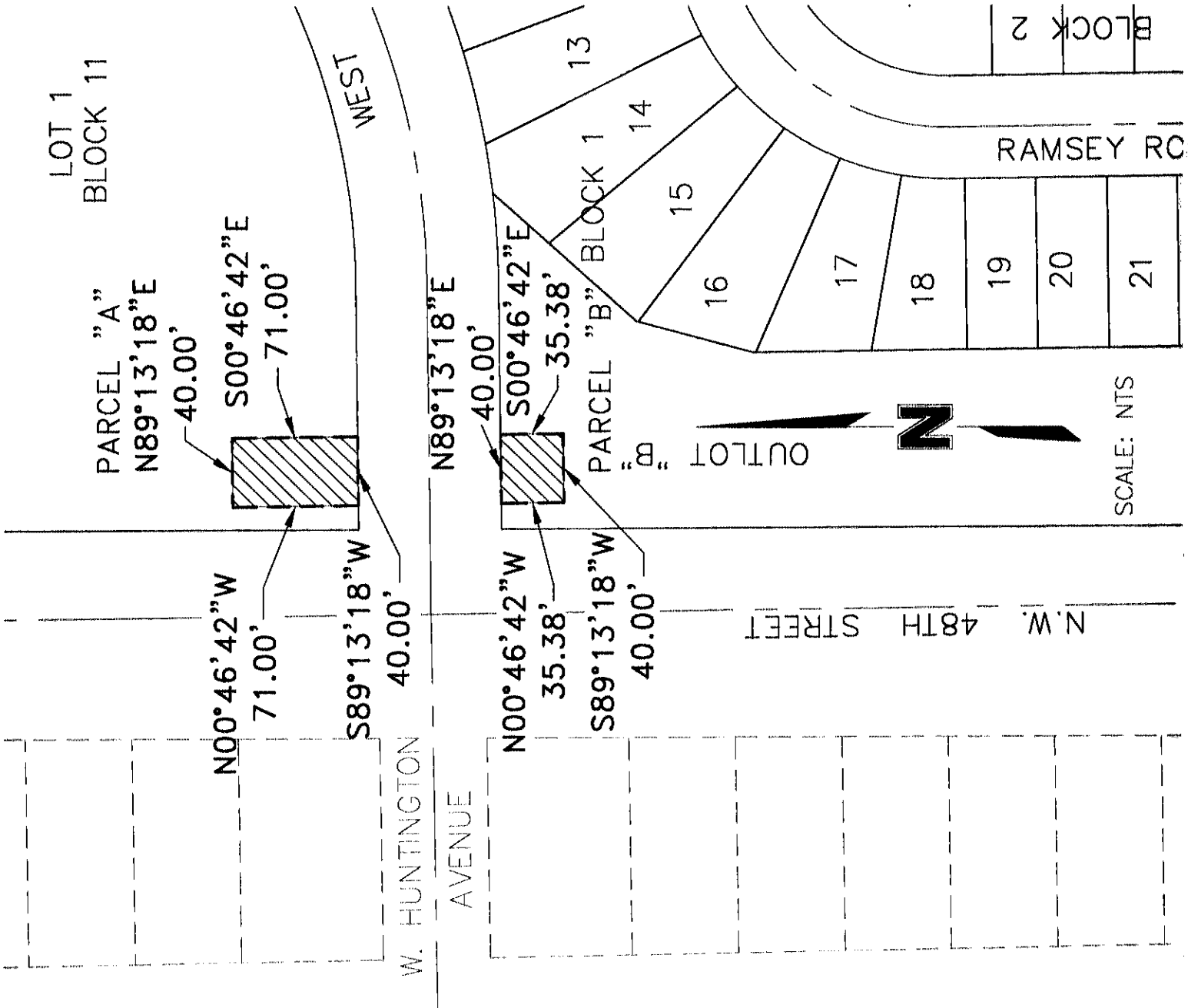
**LEGAL DESCRIPTION
PARCEL "D"**

A LEGAL DESCRIPTION FOR A TRACT OF LAND COMPOSED OF A PORTION OF

OUTLOT "D", ASHLEY HEIGHTS ADDITION, LOCATED IN THE NORTHEAST QUARTER OF SECTION 18, TOWNSHIP 10 NORTH, RANGE 6 EAST OF THE 6TH P.M., CITY OF LINCOLN, LANCASTER COUNTY, NEBRASKA, AND MORE PARTICULARLY DESCRIBED AS FOLLOWS:

COMMENCING AT THE NORTHWEST CORNER OF LOT 13 BLOCK 9, ASHLEY HEIGHTS ADDITION, THENCE ON AN ASSUMED BEARING OF NORTH 89 DEGREES 08 MINUTES 55 SECONDS EAST ALONG THE NORTH LINE OF SAID LOT 13, SAID LINE BEING A SOUTH LINE OF SAID OUTLOT "D", A DISTANCE OF 55.00 FEET TO A POINT, SAID POINT BEING **THE TRUE POINT OF BEGINNING**, THENCE ALONG A CURVE IN A CLOCKWISE DIRECTION HAVING A RADIUS OF 110.00 FEET, ARC LENGTH OF 44.73 FEET, DELTA ANGLE OF 23 DEGREES 18 MINUTES 04 SECONDS, A CHORD BEARING OF NORTH 10 DEGREES 47 MINUTES 57 SECONDS EAST, AND A CHORD LENGTH OF 44.43 FEET TO A POINT OF TANGENCY, THENCE NORTH 25 DEGREES 19 MINUTES 27 SECONDS EAST, A DISTANCE OF 18.37 FEET TO A POINT OF INTERSECTION WITH THE NORTH LINE OF SAID OUTLOT "D", THENCE NORTH 89 DEGREES 08 MINUTES 55 SECONDS EAST ALONG THE NORTH LINE OF SAID OUTLOT "D", A DISTANCE OF 22.41 FEET TO A POINT, THENCE SOUTH 25 DEGREES 58 MINUTES 20 SECONDS WEST, A DISTANCE OF 21.73 FEET TO A POINT OF CURVATURE, THENCE ALONG A CURVE IN A COUNTER CLOCKWISE DIRECTION HAVING A RADIUS OF 90.00 FEET, ARC LENGTH OF 42.13 FEET, DELTA ANGLE OF 26 DEGREES 49 MINUTES 25 SECONDS, A CHORD BEARING OF SOUTH 12 DEGREES 33 MINUTES 38 SECONDS WEST, AND A CHORD LENGTH OF 41.75 FEET TO A POINT OF INTERSECTION WITH THE SOUTH LINE OF SAID OUTLOT "D", THENCE SOUTH 89 DEGREES 08 MINUTES 55 SECONDS WEST ALONG THE SOUTH LINE OF SAID OUTLOT "D", A DISTANCE OF 20.00 FEET TO THE TRUE POINT OF BEGINNING; SAID TRACT CONTAINS A CALCULATED AREA OF 1,268.26 SQUARE FEET MORE OR LESS.

October 1, 2001 (5:07PM)
F:\Projects\20000589\Mikej\PARCELA.L02.wpd





PARCEL "C"
 N88°51'10"E
 38.00'

$\Delta=89^{\circ}42'15''$
 R=110.00'
 T=109.43'
 L=172.22'
 LC=155.16'
 CB=N44°00'03"E

S01°08'50"E
 20.00'
 38.00'

S88°51'10"W
 $\Delta=89^{\circ}42'15''$
 R=90.00'

OUTLOT "D"

120.00'
 N00°51'05"W

1
 S00°51'05"E
 120.00'

T=89.54'
 L=140.91'
 LC=126.95'
 CB=S44°00'03"W⁴

2 | 3
 BLOCK 9

5

6

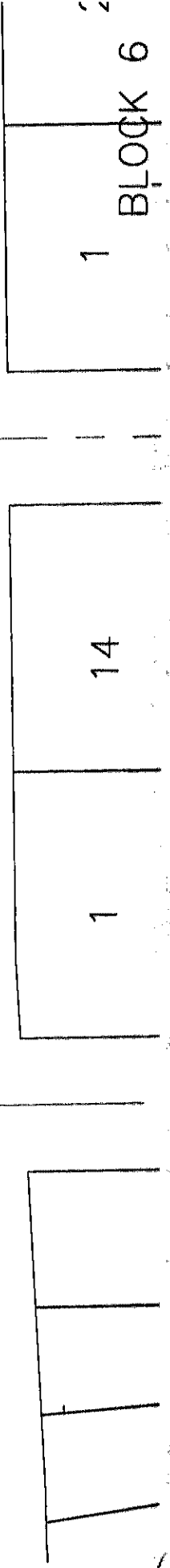
7

SCALE: NTS

LOT 1
 BLOCK 11

HUNTINGTON 20.00' AVENUE W

S89°08'55"W



14

1

1

BLOCK 6

