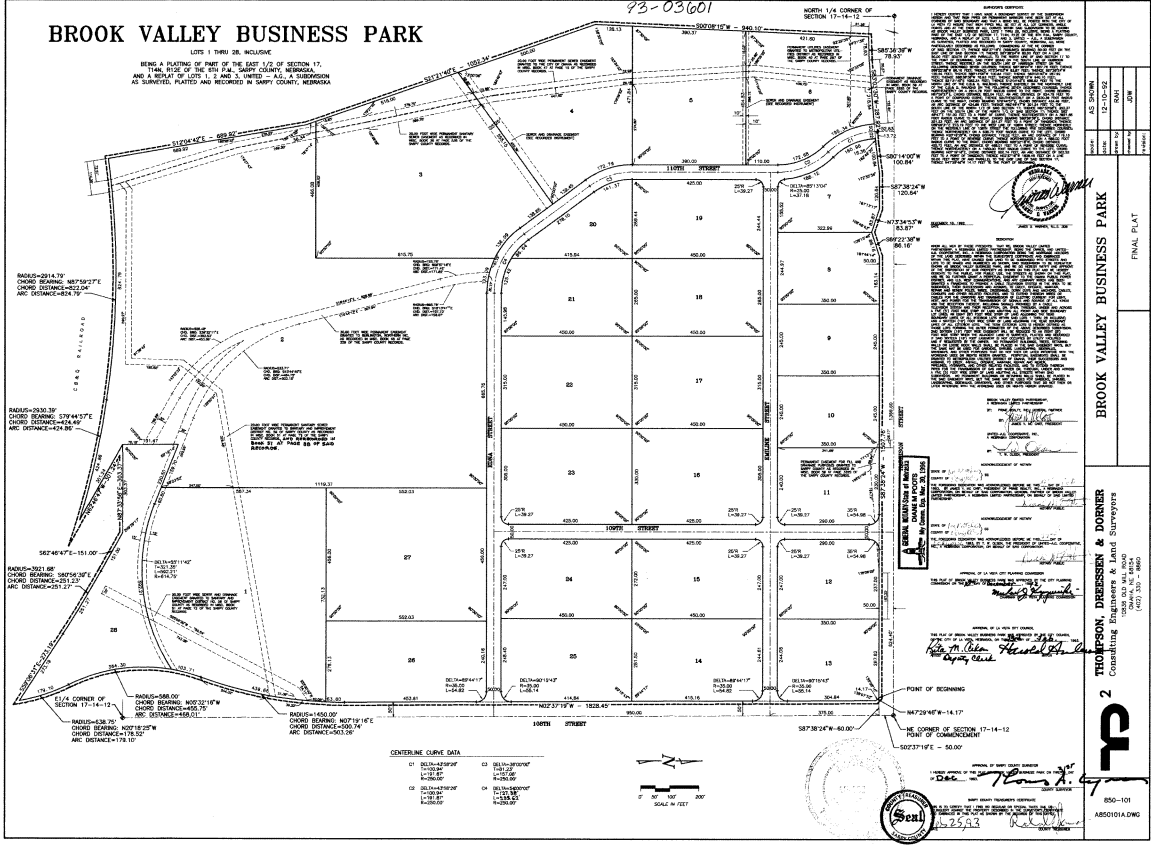


BROOK VALLEY BUSINESS PARK

LOTS 1 THRU 26, INCLUSIVE
 BEING A PLATING OF PART OF THE EAST 1/2 OF SECTION 17,
 T48N, R30E OF THE 2ND 1/4, SHERIDAN COUNTY, NEBRASKA,
 AND A REPLAT OF LOTS 1, 2 AND 3, UNITED - A.G., A SUBDIVISION
 AS SHOWN HEREON AND RECORDED IN SHERIDAN COUNTY, NEBRASKA.



CENTERLINE CURVE DATA

STATION	BEARING	ANGLE	RADIUS	CHORD	CHORD BEARING	ARC DISTANCE
01	S87°29'47.4\"	111.11°	100.00'	100.00'	S87°29'47.4\"	100.00'
02	S87°29'47.4\"	111.11°	100.00'	100.00'	S87°29'47.4\"	100.00'
03	S87°29'47.4\"	111.11°	100.00'	100.00'	S87°29'47.4\"	100.00'
04	S87°29'47.4\"	111.11°	100.00'	100.00'	S87°29'47.4\"	100.00'
05	S87°29'47.4\"	111.11°	100.00'	100.00'	S87°29'47.4\"	100.00'
06	S87°29'47.4\"	111.11°	100.00'	100.00'	S87°29'47.4\"	100.00'
07	S87°29'47.4\"	111.11°	100.00'	100.00'	S87°29'47.4\"	100.00'
08	S87°29'47.4\"	111.11°	100.00'	100.00'	S87°29'47.4\"	100.00'
09	S87°29'47.4\"	111.11°	100.00'	100.00'	S87°29'47.4\"	100.00'
10	S87°29'47.4\"	111.11°	100.00'	100.00'	S87°29'47.4\"	100.00'
11	S87°29'47.4\"	111.11°	100.00'	100.00'	S87°29'47.4\"	100.00'
12	S87°29'47.4\"	111.11°	100.00'	100.00'	S87°29'47.4\"	100.00'
13	S87°29'47.4\"	111.11°	100.00'	100.00'	S87°29'47.4\"	100.00'
14	S87°29'47.4\"	111.11°	100.00'	100.00'	S87°29'47.4\"	100.00'
15	S87°29'47.4\"	111.11°	100.00'	100.00'	S87°29'47.4\"	100.00'
16	S87°29'47.4\"	111.11°	100.00'	100.00'	S87°29'47.4\"	100.00'
17	S87°29'47.4\"	111.11°	100.00'	100.00'	S87°29'47.4\"	100.00'
18	S87°29'47.4\"	111.11°	100.00'	100.00'	S87°29'47.4\"	100.00'
19	S87°29'47.4\"	111.11°	100.00'	100.00'	S87°29'47.4\"	100.00'
20	S87°29'47.4\"	111.11°	100.00'	100.00'	S87°29'47.4\"	100.00'
21	S87°29'47.4\"	111.11°	100.00'	100.00'	S87°29'47.4\"	100.00'
22	S87°29'47.4\"	111.11°	100.00'	100.00'	S87°29'47.4\"	100.00'
23	S87°29'47.4\"	111.11°	100.00'	100.00'	S87°29'47.4\"	100.00'
24	S87°29'47.4\"	111.11°	100.00'	100.00'	S87°29'47.4\"	100.00'
25	S87°29'47.4\"	111.11°	100.00'	100.00'	S87°29'47.4\"	100.00'
26	S87°29'47.4\"	111.11°	100.00'	100.00'	S87°29'47.4\"	100.00'



THOMPSON, DREESSEN & DORNIER
 Consulting Engineers & Land Surveyors
 1000 O ST. NE, SUITE 100
 OMAHA, NE 68102
 (402) 342-1800

PROJECT: BROOK VALLEY BUSINESS PARK
 SHEET: 2
 DATE: 12-10-02
 DRAWN BY: [Signature]
 CHECKED BY: [Signature]

850-101
 A850101A.DWG

93-03601

193-03601

Final Plat

Verify
 Film
 Checked
 Fee \$ 57.00