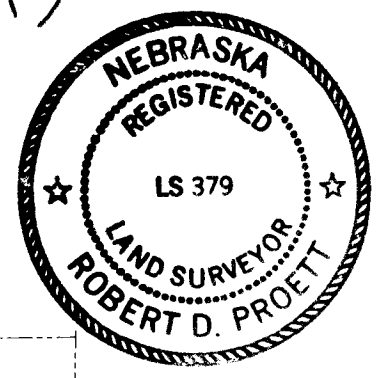


94-21313

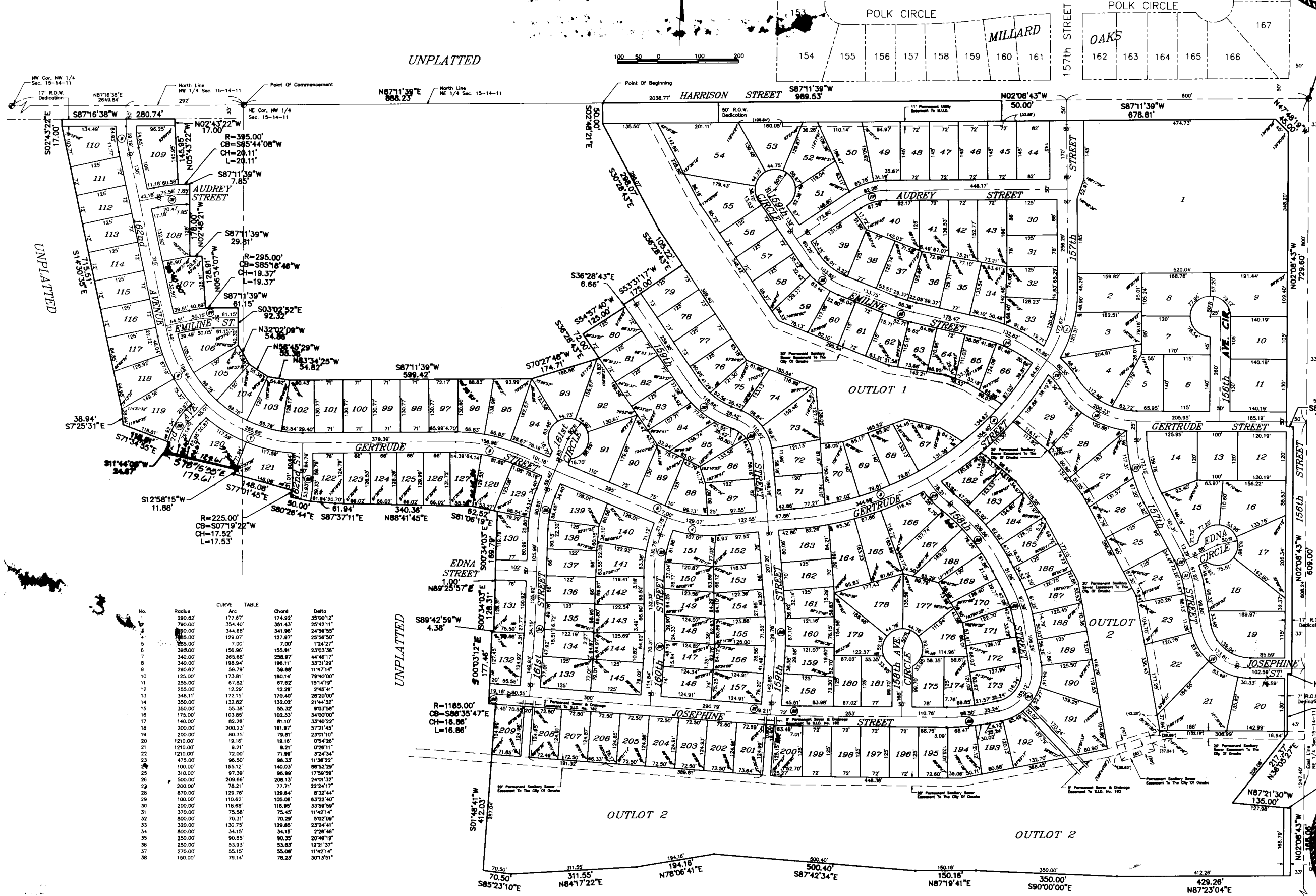
MILLARD PARK

LOTS 1 THROUGH 209, INCLUSIVE, AND OUTLOTS 1 AND 2, BEING A PLATTING OF THAT PART OF THE NORTHEAST QUARTER AND THE NORTHWEST QUARTER OF SECTION 14 NORTH, RANGE 11 EAST OF THE 6TH P.M., SАРY COUNTY, NEBRASKA.

94-21313



roof
DE
Verify
Filmed
Checked
Fee \$ 187.00



NE Cor. NE 1/4 Sec. 15-14-11

TAXLOT 14

CHERRY

GERTRUDE ST.

155th AVENUE

EDNA STREET

JOSEPHINE STREET

157th STREET

158th STREET

159th STREET

160th STREET

161st STREET

162nd STREET

163rd STREET

164th STREET

165th STREET

166th STREET

167th STREET

168th STREET

169th STREET

170th STREET

171st STREET

172nd STREET

173rd STREET

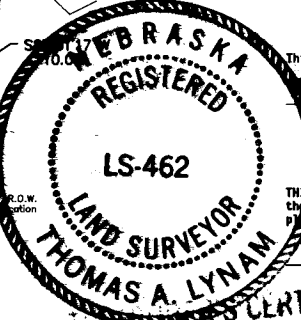
174th STREET

175th STREET

176th STREET

UNPLATTED

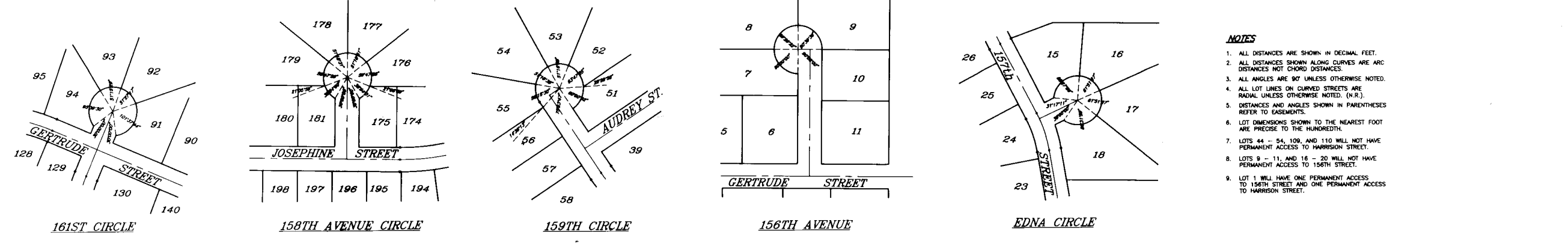
No.	Radius	Curve	Table	Chord	Bearing	Dist.
1	200.00	174.07	29.02	174.07	N29°42'11"	29.02
2	300.00	261.07	43.02	261.07	N23°34'50"	43.02
3	400.00	348.07	57.02	348.07	N17°27'29"	57.02
4	500.00	435.07	71.02	435.07	N11°20'08"	71.02
5	600.00	522.07	85.02	522.07	N5°12'47"	85.02
6	700.00	609.07	99.02	609.07	N0°05'26"	99.02
7	800.00	696.07	113.02	696.07	N35°58'05"	113.02
8	900.00	783.07	127.02	783.07	N31°50'44"	127.02
9	1000.00	870.07	141.02	870.07	N27°43'23"	141.02
10	1100.00	957.07	155.02	957.07	N23°36'02"	155.02
11	1200.00	1044.07	169.02	1044.07	N19°28'41"	169.02
12	1300.00	1131.07	183.02	1131.07	N15°21'20"	183.02
13	1400.00	1218.07	197.02	1218.07	N11°13'59"	197.02
14	1500.00	1305.07	211.02	1305.07	N7°06'38"	211.02
15	1600.00	1392.07	225.02	1392.07	N2°59'17"	225.02
16	1700.00	1479.07	239.02	1479.07	N0°51'56"	239.02
17	1800.00	1566.07	253.02	1566.07	N33°04'35"	253.02
18	1900.00	1653.07	267.02	1653.07	N28°57'14"	267.02
19	2000.00	1740.07	281.02	1740.07	N24°49'53"	281.02
20	2100.00	1827.07	295.02	1827.07	N20°42'32"	295.02
21	2200.00	1914.07	309.02	1914.07	N16°35'11"	309.02
22	2300.00	2001.07	323.02	2001.07	N12°27'50"	323.02
23	2400.00	2088.07	337.02	2088.07	N8°20'29"	337.02
24	2500.00	2175.07	351.02	2175.07	N4°13'08"	351.02
25	2600.00	2262.07	365.02	2262.07	N0°05'47"	365.02
26	2700.00	2349.07	379.02	2349.07	N34°58'26"	379.02
27	2800.00	2436.07	393.02	2436.07	N30°51'05"	393.02
28	2900.00	2523.07	407.02	2523.07	N26°43'44"	407.02
29	3000.00	2610.07	421.02	2610.07	N22°36'23"	421.02
30	3100.00	2697.07	435.02	2697.07	N18°29'02"	435.02
31	3200.00	2784.07	449.02	2784.07	N14°21'41"	449.02
32	3300.00	2871.07	463.02	2871.07	N10°14'20"	463.02
33	3400.00	2958.07	477.02	2958.07	N6°06'59"	477.02
34	3500.00	3045.07	491.02	3045.07	N1°59'38"	491.02
35	3600.00	3132.07	505.02	3132.07	N0°52'17"	505.02
36	3700.00	3219.07	519.02	3219.07	N32°04'56"	519.02
37	3800.00	3306.07	533.02	3306.07	N27°57'35"	533.02
38	3900.00	3393.07	547.02	3393.07	N23°50'14"	547.02



NEBRASKA REGISTERED LAND SURVEYOR THOMAS A. LYNAM

NEBRASKA REGISTERED LAND SURVEYOR

NEBRASKA REGISTERED LAND SURVEYOR



- NOTES
1. ALL DISTANCES ARE SHOWN IN DECIMAL FEET.
 2. ALL DISTANCES SHOWN ALONG CURVES ARE ARC DISTANCES NOT CHORD DISTANCES.
 3. ALL ANGLES ARE 90° UNLESS OTHERWISE NOTED.
 4. ALL LOT LINES ON CURVED STREETS ARE RADIAL UNLESS OTHERWISE NOTED. (N.R.)
 5. DISTANCES AND ANGLES SHOWN IN PARENTHESES REFER TO BASEMENTS.
 6. LOT DIMENSIONS SHOWN TO THE NEAREST FOOT ARE PRECISE TO THE HUNDRETHS.
 7. LOTS 44 - 54, 100 AND 110 WILL NOT HAVE PERMANENT ACCESS TO HARRISON STREET.
 8. LOTS 9 - 11 AND 16 - 20 WILL NOT HAVE PERMANENT ACCESS TO HARRIS STREET.
 9. LOT 1 WILL HAVE ONE PERMANENT ACCESS TO 156TH STREET AND ONE PERMANENT ACCESS TO HARRISON STREET.

Dedication June 30, 1993

ACKNOWLEDGMENTS OF NOTARIES

State of Nebraska County of Douglas

On this 30th day of June, 1993, A.D., before me, a Notary Public, duly commissioned and qualified for said County, appeared R.P. Dodge, Jr., who is personally known to me to be President of R.P. Dodge Company, and he did acknowledge the execution of the foregoing dedication to be his voluntary act and deed as such Officer and the voluntary act and deed of said Corporation.

Witness my hand and official seal the date last aforesaid.

Barbara M. Hammond Notary Public

APPROVAL OF COUNTY PLANNING COMMISSION

APPROVAL OF COUNTY BUILDING INSPECTOR

APPROVAL OF COUNTY BOARD OF COMMISSIONERS

APPROVAL OF COUNTY BOARD OF COMMISSIONERS

APPROVAL OF COUNTY BOARD OF COMMISSIONERS

APPROVAL OF COUNTY BOARD OF COMMISSIONERS

APPROVAL OF COUNTY BOARD OF COMMISSIONERS

APPROVAL OF COUNTY BOARD OF COMMISSIONERS

APPROVAL OF COUNTY BOARD OF COMMISSIONERS

APPROVAL OF COUNTY BOARD OF COMMISSIONERS

APPROVAL OF COUNTY BOARD OF COMMISSIONERS

APPROVAL OF COUNTY BOARD OF COMMISSIONERS

APPROVAL OF COUNTY BOARD OF COMMISSIONERS

APPROVAL OF COUNTY BOARD OF COMMISSIONERS

APPROVAL OF COUNTY BOARD OF COMMISSIONERS

FINAL PLAT MILLARD PARK 156TH TO 168TH STREET & HARRISON STREET, SАРY COUNTY, NEBRASKA

1 of 1