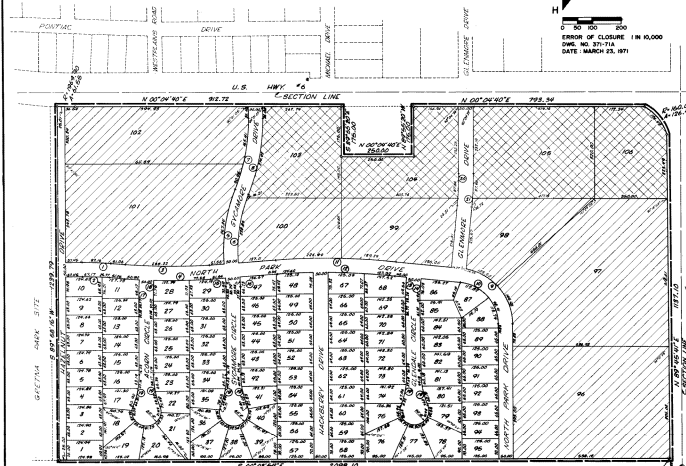


NORTH PARK

A SUBDIVISION LOCATED IN A PART OF THE EAST ONE-HALF OF THE NORTHEAST QUARTER OF SECTION 36, TOWNSHIP 36 NORTH, RANGE 12 EAST OF THE 5TH P.M., SHERBORN, IOWA.



LEGEND

UNPLATTED

NOTE: UNLESS OTHERWISE SPECIFIED, ALL ANGLES ARE 90°.

GENERAL NOTES

1. TO VERIFY THAT THE AREA HAS A SUITABLE SOURCE OF WATER AND THAT THE PROPOSED UTILITIES ARE PROPERLY LOCATED AND DEPTH IS SUITABLE FOR THE PROPOSED UTILITIES, THE ENGINEER HAS CONDUCTED SURVEYS AND TESTS. THESE SURVEYS AND TESTS HAVE BEEN CONDUCTED IN ACCORDANCE WITH THE REQUIREMENTS OF THE IOWA DEPARTMENT OF TRANSPORTATION AND THE IOWA DEPARTMENT OF PUBLIC SAFETY.

2. THE ENGINEER HAS CONDUCTED SURVEYS AND TESTS TO DETERMINE THE SUITABILITY OF THE AREA FOR THE PROPOSED UTILITIES. THESE SURVEYS AND TESTS HAVE BEEN CONDUCTED IN ACCORDANCE WITH THE REQUIREMENTS OF THE IOWA DEPARTMENT OF TRANSPORTATION AND THE IOWA DEPARTMENT OF PUBLIC SAFETY.

3. THE ENGINEER HAS CONDUCTED SURVEYS AND TESTS TO DETERMINE THE SUITABILITY OF THE AREA FOR THE PROPOSED UTILITIES. THESE SURVEYS AND TESTS HAVE BEEN CONDUCTED IN ACCORDANCE WITH THE REQUIREMENTS OF THE IOWA DEPARTMENT OF TRANSPORTATION AND THE IOWA DEPARTMENT OF PUBLIC SAFETY.

UNPLATTED

NOTE: UNLESS OTHERWISE SPECIFIED, ALL ANGLES ARE 90°.

GENERAL NOTES

1. TO VERIFY THAT THE AREA HAS A SUITABLE SOURCE OF WATER AND THAT THE PROPOSED UTILITIES ARE PROPERLY LOCATED AND DEPTH IS SUITABLE FOR THE PROPOSED UTILITIES, THE ENGINEER HAS CONDUCTED SURVEYS AND TESTS. THESE SURVEYS AND TESTS HAVE BEEN CONDUCTED IN ACCORDANCE WITH THE REQUIREMENTS OF THE IOWA DEPARTMENT OF TRANSPORTATION AND THE IOWA DEPARTMENT OF PUBLIC SAFETY.

2. THE ENGINEER HAS CONDUCTED SURVEYS AND TESTS TO DETERMINE THE SUITABILITY OF THE AREA FOR THE PROPOSED UTILITIES. THESE SURVEYS AND TESTS HAVE BEEN CONDUCTED IN ACCORDANCE WITH THE REQUIREMENTS OF THE IOWA DEPARTMENT OF TRANSPORTATION AND THE IOWA DEPARTMENT OF PUBLIC SAFETY.

3. THE ENGINEER HAS CONDUCTED SURVEYS AND TESTS TO DETERMINE THE SUITABILITY OF THE AREA FOR THE PROPOSED UTILITIES. THESE SURVEYS AND TESTS HAVE BEEN CONDUCTED IN ACCORDANCE WITH THE REQUIREMENTS OF THE IOWA DEPARTMENT OF TRANSPORTATION AND THE IOWA DEPARTMENT OF PUBLIC SAFETY.

STATISTICAL DATA

NO.	AREA	1	2	3	4	5
1	3478.00'	80.00	1300.00	4.8000	37.70	
2	3478.00'	80.00	1300.00	2.8000	42.80	
3	3478.00'	100.00	1400.00	3.1000	48.32	
4	3478.00'	100.00	1400.00	3.8000	59.72	
5	3478.00'	120.00	1600.00	3.2000	52.24	
6	3478.00'	120.00	1600.00	14.1711	109.26	
7	3478.00'	120.00	1600.00	8.2634	66.48	
8	3478.00'	120.00	1600.00	7.7847	61.03	
9	3478.00'	120.00	1600.00	39.2000	306.72	
10	3478.00'	120.00	1600.00	39.2000	306.72	
11	3478.00'	120.00	1600.00	2.5244	19.34	
12	3478.00'	120.00	1600.00	2.2668	18.21	
13	3478.00'	120.00	1600.00	1.7808	14.24	
14	3478.00'	120.00	1600.00	7.7824	61.02	
15	3478.00'	120.00	1600.00	32.2000	257.76	
16	3478.00'	120.00	1600.00	32.2000	257.76	
17	3478.00'	120.00	1600.00	2.4661	19.74	
18	3478.00'	120.00	1600.00	4.8000	37.72	
19	3478.00'	120.00	1600.00	19.2000	155.04	
20	3478.00'	120.00	1600.00	2.1000	16.80	
21	3478.00'	120.00	1600.00	5.1171	40.92	

GENERAL NOTES

1. TO VERIFY THAT THE AREA HAS A SUITABLE SOURCE OF WATER AND THAT THE PROPOSED UTILITIES ARE PROPERLY LOCATED AND DEPTH IS SUITABLE FOR THE PROPOSED UTILITIES, THE ENGINEER HAS CONDUCTED SURVEYS AND TESTS. THESE SURVEYS AND TESTS HAVE BEEN CONDUCTED IN ACCORDANCE WITH THE REQUIREMENTS OF THE IOWA DEPARTMENT OF TRANSPORTATION AND THE IOWA DEPARTMENT OF PUBLIC SAFETY.

2. THE ENGINEER HAS CONDUCTED SURVEYS AND TESTS TO DETERMINE THE SUITABILITY OF THE AREA FOR THE PROPOSED UTILITIES. THESE SURVEYS AND TESTS HAVE BEEN CONDUCTED IN ACCORDANCE WITH THE REQUIREMENTS OF THE IOWA DEPARTMENT OF TRANSPORTATION AND THE IOWA DEPARTMENT OF PUBLIC SAFETY.

3. THE ENGINEER HAS CONDUCTED SURVEYS AND TESTS TO DETERMINE THE SUITABILITY OF THE AREA FOR THE PROPOSED UTILITIES. THESE SURVEYS AND TESTS HAVE BEEN CONDUCTED IN ACCORDANCE WITH THE REQUIREMENTS OF THE IOWA DEPARTMENT OF TRANSPORTATION AND THE IOWA DEPARTMENT OF PUBLIC SAFETY.

GENERAL NOTES

1. TO VERIFY THAT THE AREA HAS A SUITABLE SOURCE OF WATER AND THAT THE PROPOSED UTILITIES ARE PROPERLY LOCATED AND DEPTH IS SUITABLE FOR THE PROPOSED UTILITIES, THE ENGINEER HAS CONDUCTED SURVEYS AND TESTS. THESE SURVEYS AND TESTS HAVE BEEN CONDUCTED IN ACCORDANCE WITH THE REQUIREMENTS OF THE IOWA DEPARTMENT OF TRANSPORTATION AND THE IOWA DEPARTMENT OF PUBLIC SAFETY.

2. THE ENGINEER HAS CONDUCTED SURVEYS AND TESTS TO DETERMINE THE SUITABILITY OF THE AREA FOR THE PROPOSED UTILITIES. THESE SURVEYS AND TESTS HAVE BEEN CONDUCTED IN ACCORDANCE WITH THE REQUIREMENTS OF THE IOWA DEPARTMENT OF TRANSPORTATION AND THE IOWA DEPARTMENT OF PUBLIC SAFETY.

3. THE ENGINEER HAS CONDUCTED SURVEYS AND TESTS TO DETERMINE THE SUITABILITY OF THE AREA FOR THE PROPOSED UTILITIES. THESE SURVEYS AND TESTS HAVE BEEN CONDUCTED IN ACCORDANCE WITH THE REQUIREMENTS OF THE IOWA DEPARTMENT OF TRANSPORTATION AND THE IOWA DEPARTMENT OF PUBLIC SAFETY.

COLLETTON, SCHEMERS & ASSOCIATES, INC.
ARCHITECTS ENGINEERS PLANNERS
OMAHA, NEBRASKA DAVENPORT, IOWA

44