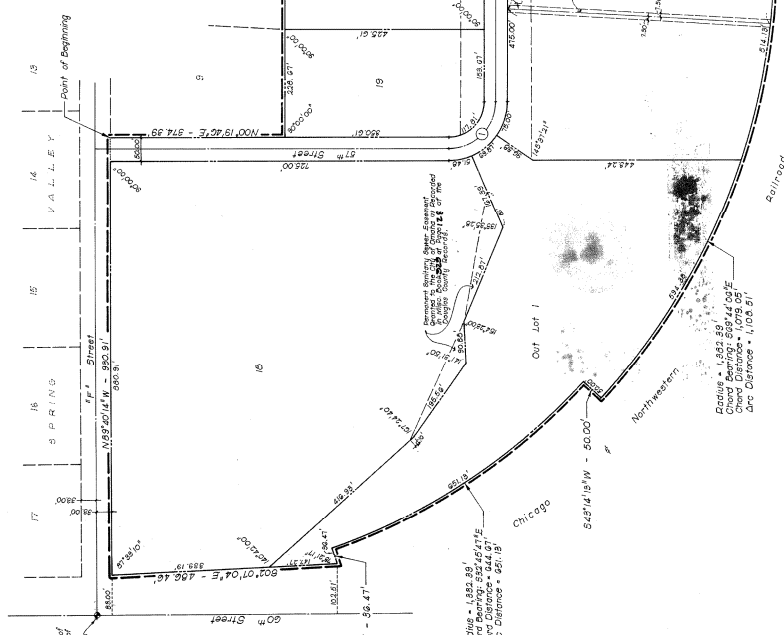


SPRING VALLEY INDUSTRIAL PARK

Sub. 1877 Rec. 444

Being a replanting of part of Lots 2, 3, 4, 5, 6, 7, 8, 9, 10, 11, 12, 13, 14, 15, 16, 17, 18, 19, 20, 21, 22, 23, 24, 25, 26, 27, 28, 29, 30, 31, 32, 33, 34, 35, 36, 37, 38, 39, 40, 41, 42, 43, 44, 45, 46, 47, 48, 49, 50, 51, 52, 53, 54, 55, 56, 57, 58, 59, 60, 61, 62, 63, 64, 65, 66, 67, 68, 69, 70, 71, 72, 73, 74, 75, 76, 77, 78, 79, 80, 81, 82, 83, 84, 85, 86, 87, 88, 89, 90, 91, 92, 93, 94, 95, 96, 97, 98, 99, 100, 101, 102, 103, 104, 105, 106, 107, 108, 109, 110, 111, 112, 113, 114, 115, 116, 117, 118, 119, 120, 121, 122, 123, 124, 125, 126, 127, 128, 129, 130, 131, 132, 133, 134, 135, 136, 137, 138, 139, 140, 141, 142, 143, 144, 145, 146, 147, 148, 149, 150, 151, 152, 153, 154, 155, 156, 157, 158, 159, 160, 161, 162, 163, 164, 165, 166, 167, 168, 169, 170, 171, 172, 173, 174, 175, 176, 177, 178, 179, 180, 181, 182, 183, 184, 185, 186, 187, 188, 189, 190, 191, 192, 193, 194, 195, 196, 197, 198, 199, 200, 201, 202, 203, 204, 205, 206, 207, 208, 209, 210, 211, 212, 213, 214, 215, 216, 217, 218, 219, 220, 221, 222, 223, 224, 225, 226, 227, 228, 229, 230, 231, 232, 233, 234, 235, 236, 237, 238, 239, 240, 241, 242, 243, 244, 245, 246, 247, 248, 249, 250, 251, 252, 253, 254, 255, 256, 257, 258, 259, 260, 261, 262, 263, 264, 265, 266, 267, 268, 269, 270, 271, 272, 273, 274, 275, 276, 277, 278, 279, 280, 281, 282, 283, 284, 285, 286, 287, 288, 289, 290, 291, 292, 293, 294, 295, 296, 297, 298, 299, 300, 301, 302, 303, 304, 305, 306, 307, 308, 309, 310, 311, 312, 313, 314, 315, 316, 317, 318, 319, 320, 321, 322, 323, 324, 325, 326, 327, 328, 329, 330, 331, 332, 333, 334, 335, 336, 337, 338, 339, 340, 341, 342, 343, 344, 345, 346, 347, 348, 349, 350, 351, 352, 353, 354, 355, 356, 357, 358, 359, 360, 361, 362, 363, 364, 365, 366, 367, 368, 369, 370, 371, 372, 373, 374, 375, 376, 377, 378, 379, 380, 381, 382, 383, 384, 385, 386, 387, 388, 389, 390, 391, 392, 393, 394, 395, 396, 397, 398, 399, 400, 401, 402, 403, 404, 405, 406, 407, 408, 409, 410, 411, 412, 413, 414, 415, 416, 417, 418, 419, 420, 421, 422, 423, 424, 425, 426, 427, 428, 429, 430, 431, 432, 433, 434, 435, 436, 437, 438, 439, 440, 441, 442, 443, 444, 445, 446, 447, 448, 449, 450, 451, 452, 453, 454, 455, 456, 457, 458, 459, 460, 461, 462, 463, 464, 465, 466, 467, 468, 469, 470, 471, 472, 473, 474, 475, 476, 477, 478, 479, 480, 481, 482, 483, 484, 485, 486, 487, 488, 489, 490, 491, 492, 493, 494, 495, 496, 497, 498, 499, 500, 501, 502, 503, 504, 505, 506, 507, 508, 509, 510, 511, 512, 513, 514, 515, 516, 517, 518, 519, 520, 521, 522, 523, 524, 525, 526, 527, 528, 529, 530, 531, 532, 533, 534, 535, 536, 537, 538, 539, 540, 541, 542, 543, 544, 545, 546, 547, 548, 549, 550, 551, 552, 553, 554, 555, 556, 557, 558, 559, 560, 561, 562, 563, 564, 565, 566, 567, 568, 569, 570, 571, 572, 573, 574, 575, 576, 577, 578, 579, 580, 581, 582, 583, 584, 585, 586, 587, 588, 589, 590, 591, 592, 593, 594, 595, 596, 597, 598, 599, 600, 601, 602, 603, 604, 605, 606, 607, 608, 609, 610, 611, 612, 613, 614, 615, 616, 617, 618, 619, 620, 621, 622, 623, 624, 625, 626, 627, 628, 629, 630, 631, 632, 633, 634, 635, 636, 637, 638, 639, 640, 641, 642, 643, 644, 645, 646, 647, 648, 649, 650, 651, 652, 653, 654, 655, 656, 657, 658, 659, 660, 661, 662, 663, 664, 665, 666, 667, 668, 669, 670, 671, 672, 673, 674, 675, 676, 677, 678, 679, 680, 681, 682, 683, 684, 685, 686, 687, 688, 689, 690, 691, 692, 693, 694, 695, 696, 697, 698, 699, 700, 701, 702, 703, 704, 705, 706, 707, 708, 709, 710, 711, 712, 713, 714, 715, 716, 717, 718, 719, 720, 721, 722, 723, 724, 725, 726, 727, 728, 729, 730, 731, 732, 733, 734, 735, 736, 737, 738, 739, 740, 741, 742, 743, 744, 745, 746, 747, 748, 749, 750, 751, 752, 753, 754, 755, 756, 757, 758, 759, 760, 761, 762, 763, 764, 765, 766, 767, 768, 769, 770, 771, 772, 773, 774, 775, 776, 777, 778, 779, 780, 781, 782, 783, 784, 785, 786, 787, 788, 789, 790, 791, 792, 793, 794, 795, 796, 797, 798, 799, 800, 801, 802, 803, 804, 805, 806, 807, 808, 809, 810, 811, 812, 813, 814, 815, 816, 817, 818, 819, 820, 821, 822, 823, 824, 825, 826, 827, 828, 829, 830, 831, 832, 833, 834, 835, 836, 837, 838, 839, 840, 841, 842, 843, 844, 845, 846, 847, 848, 849, 850, 851, 852, 853, 854, 855, 856, 857, 858, 859, 860, 861, 862, 863, 864, 865, 866, 867, 868, 869, 870, 871, 872, 873, 874, 875, 876, 877, 878, 879, 880, 881, 882, 883, 884, 885, 886, 887, 888, 889, 890, 891, 892, 893, 894, 895, 896, 897, 898, 899, 900, 901, 902, 903, 904, 905, 906, 907, 908, 909, 910, 911, 912, 913, 914, 915, 916, 917, 918, 919, 920, 921, 922, 923, 924, 925, 926, 927, 928, 929, 930, 931, 932, 933, 934, 935, 936, 937, 938, 939, 940, 941, 942, 943, 944, 945, 946, 947, 948, 949, 950, 951, 952, 953, 954, 955, 956, 957, 958, 959, 960, 961, 962, 963, 964, 965, 966, 967, 968, 969, 970, 971, 972, 973, 974, 975, 976, 977, 978, 979, 980, 981, 982, 983, 984, 985, 986, 987, 988, 989, 990, 991, 992, 993, 994, 995, 996, 997, 998, 999, 1000.



State of Nebraska } ss
County of Douglas }
I, James J. Breen, Mayor of the City of Omaha, Nebraska, do hereby certify that the plat of Spring Valley Industrial Park shown on this plat is a true and correct copy of the original plat as the same appears on file in the office of the City Engineer of Omaha, Nebraska.

Witness my hand and the seal of the City of Omaha, Nebraska, this 21 day of MARCH, 1990.

James J. Breen
Mayor of the City of Omaha, Nebraska

State of Nebraska } ss
County of Douglas }
I, George J. Buehler, Register of Deeds for the County of Douglas, Nebraska, do hereby certify that the plat of Spring Valley Industrial Park shown on this plat is a true and correct copy of the original plat as the same appears on file in the office of the County Register of Deeds for the County of Douglas, Nebraska.

Witness my hand and the seal of the County Register of Deeds for the County of Douglas, Nebraska, this 21 day of MARCH, 1990.

George J. Buehler
Register of Deeds for the County of Douglas, Nebraska

State of Nebraska } ss
County of Douglas }
I, James J. Breen, Mayor of the City of Omaha, Nebraska, do hereby certify that the plat of Spring Valley Industrial Park shown on this plat is a true and correct copy of the original plat as the same appears on file in the office of the City Engineer of Omaha, Nebraska.

Witness my hand and the seal of the City of Omaha, Nebraska, this 21 day of MARCH, 1990.

James J. Breen
Mayor of the City of Omaha, Nebraska

State of Nebraska } ss
County of Douglas }
I, George J. Buehler, Register of Deeds for the County of Douglas, Nebraska, do hereby certify that the plat of Spring Valley Industrial Park shown on this plat is a true and correct copy of the original plat as the same appears on file in the office of the County Register of Deeds for the County of Douglas, Nebraska.

Witness my hand and the seal of the County Register of Deeds for the County of Douglas, Nebraska, this 21 day of MARCH, 1990.

George J. Buehler
Register of Deeds for the County of Douglas, Nebraska

State of Nebraska } ss
County of Douglas }
I, James J. Breen, Mayor of the City of Omaha, Nebraska, do hereby certify that the plat of Spring Valley Industrial Park shown on this plat is a true and correct copy of the original plat as the same appears on file in the office of the City Engineer of Omaha, Nebraska.

Witness my hand and the seal of the City of Omaha, Nebraska, this 21 day of MARCH, 1990.

James J. Breen
Mayor of the City of Omaha, Nebraska

State of Nebraska } ss
County of Douglas }
I, George J. Buehler, Register of Deeds for the County of Douglas, Nebraska, do hereby certify that the plat of Spring Valley Industrial Park shown on this plat is a true and correct copy of the original plat as the same appears on file in the office of the County Register of Deeds for the County of Douglas, Nebraska.

Witness my hand and the seal of the County Register of Deeds for the County of Douglas, Nebraska, this 21 day of MARCH, 1990.

George J. Buehler
Register of Deeds for the County of Douglas, Nebraska

RECEIVED
JAN 28 2 36 PM '90
GEORGE J. BUEHLER
REGISTER OF DEEDS
DOUGLAS COUNTY, NE

8080 Rec
BK 1877 N CIO FEE 28.00
PG 444 N DEL MC
OF 222 COMP FIB

E8#25
SPRING VALLEY INDUSTRIAL
PAC

THOMPSON DRESSEN
Consulting Engineers & Land Surveyors
1111 N. 10th Street
LINCOLN, NE 68502

SPRING VALLEY INDUSTRIAL PARK
SUBDIVISION
LOTS 1-30
CITY OF OMAHA, NEBRASKA

1990