

AFFIDAVIT OF CORRECTION

Lots 1 thru 8, inclusive and Lots 11 thru 15, inclusive, OLD MILL PLAZA, a subdivision in Douglas County, Nebraska, as surveyed, platted and recorded, is corrected as indicated by dimensions, angles and bearings in boxes on attached sheet.

AFFIDAVIT

Corrections to OLD MILL PLAZA, a subdivision of part of the East 1/2 of the NE 1/4 of Section 20, T 15 N, R 12 E, and part of the West 1/2 of the NW 1/4 of Section 21, T 15 N, R 12 E of the 6th P.M., Douglas County, Nebraska.

I, MAX A. PARK, do hereby submit the above drawing in order to correct certain errors in the dimensions of Lots 1 thru 8, inclusive and lots 11 thru 15, inclusive, OLD MILL PLAZA, as recorded in Book 11, Page 569 of the records in the Register of Deeds Office, Douglas County, Nebraska.

I hereby certify that I am the identical person whose name appears on the Surveyor's Certificate of said OLD MILL PLAZA.

Max A. Park
Max A. Park, Registered Land Surveyor #251

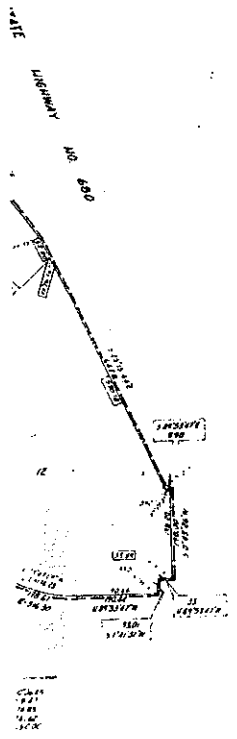
STATE OF NEBRASKA)
COUNTY OF DOUGLAS) SS

On this 31 day of July, 1926, before me, a notary public duly commissioned and qualified in and for said County, appeared Max A. Park, who is personally known by me to be the identical person whose name is affixed above, and he did acknowledge the execution of the foregoing affidavit to be his voluntary act and deed.

Witness my hand and official seal at Omaha, Nebraska on the date last aforesaid.

Quincy C. Tomlinson
Notary Public

My commission expires June 22, 1927



FINAL PLAT

OLD MILL PLAZA, SUBDIVISION OF PART OF THE EAST 1/2 OF THE NE 1/4 OF SECTION 20, T 15 N, R 12 E, AND PART OF THE WEST 1/2 OF THE NW 1/4 OF SECTION 21, T 15 N, R 12 E OF THE 6TH P.M., DOUGLAS COUNTY, NEBRASKA.

LAMP RYNEARSON AND COMPANY
REGISTERED LAND SURVEYORS
OMAHA, NEBRASKA

REVISIONS

DATE RECEIVED

NO. OF PAGES

DATE

18/11/26

1926

572
Page 569

Lamp Rynearson
4670 Dodge St.
N. Omaha, Neb.
Illustrated Fee 6.25

ENTERED IN NUMERICAL INDEX AND RECORDED IN THE REGISTER OF DEEDS OFFICE IN DOUGLAS COUNTY, NEBRASKA
31 DAY OF July 1926 G. MARSH OGLEBY, REGISTRAR OF DEEDS